

# QPD W 4PE2,5 6-11 M20 FC EX - Panel feed-through



1411395

<https://www.phoenixcontact.com/us/products/1411395>

Please be informed that the data shown in this PDF document is generated from our online catalog. Please find the complete data in the user documentation. Our general terms of use for downloads are valid.



QUICKON panel feed-through for the hazardous area, 4+PE-pos., 1.0 mm<sup>2</sup> ... 2.5 mm<sup>2</sup>/with QUICKON nut, black, for cable diameter 6 mm ... 11 mm, M20 connection thread with 5 slip-on contacts for slip-on sleeves.

## Your advantages

- Innovative and time saving - QUICKON fast connection for time saving of up to 80 % for on-site connection
- Robust throughout: housing with IP68/IP69K and IK07 protection for a wide range of applications
- Safer connection with mechanical coding to protect against mismatching, and touch-proof protection in accordance with DIN EN 0105
- Efficient - by using panel feed-throughs, devices no longer need to be opened in order to connect cables

## Commercial data

Item number	1411395
Packing unit	1 pc
Minimum order quantity	25 pc
Product key	BF6ACB
Catalog page	Page 489 (C-2-2017)
GTIN	4046356931991
Weight per piece (including packing)	22.22 g
Weight per piece (excluding packing)	22.22 g
Country of origin	PL



# QPD W 4PE2,5 6-11 M20 FC EX - Panel feed-through



1411395

<https://www.phoenixcontact.com/us/products/1411395>

Width	34.6 mm
Height	34.6 mm
Length	71.8 mm
Diameter	34.6 mm
Wrench size	27 mm
Wrench size for mounting	27 mm

## Electrical properties

Rated surge voltage (II/2)	8 kV
Rated surge voltage (III/2)	8 kV
Rated surge voltage (III/3)	6 kV
Contact resistance	< 3 mΩ
Rated voltage (III/3)	60 V
Nominal voltage $U_N$	60 V
Nominal current $I_N$	20 A

## Material specifications

Material Housing	PA
Material Contact	Cu
Material Contact surface	Silver-plated
Flammability rating according to UL 94	V0
Material wire insulation	PVC/PE/TPE/rubber

## Cable/line

Structure of individual litz in acc. with VDE 0295 / smallest wire diameter	VDE 0295 class 1 to 6/min. 0.15 mm
Wire diameter including insulation	2 mm ... 3.8 mm
Position marking	1, 2, 3, N, PE
Material wire insulation	PVC/PE/TPE/rubber

## Mounting

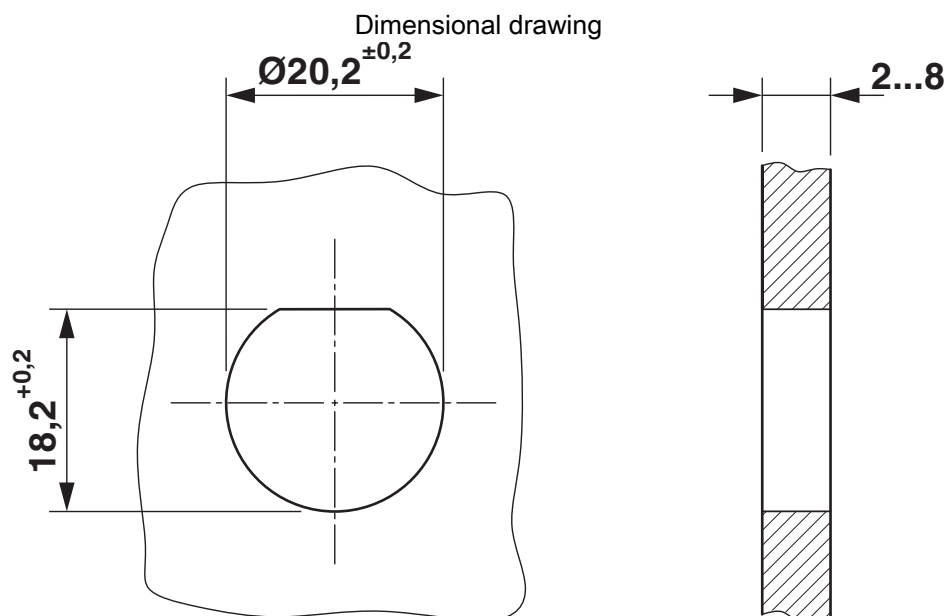
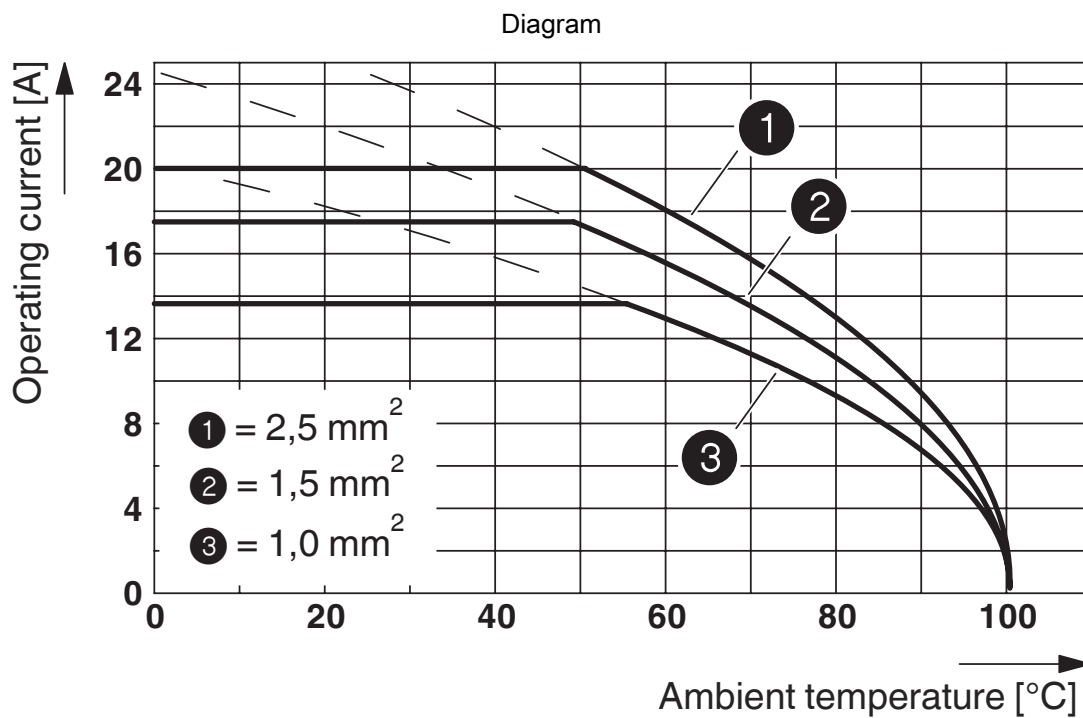
Mounting type	Front mounting M20
---------------	--------------------

## Environmental and real-life conditions

### Ambient conditions

Degree of protection	IP66
	IP68 (2 m / 24 h)
	IP69K
Ambient temperature (operation)	-40 °C ... 100 °C
Temperature when conductor connected	-5 °C ... 50 °C
Ambient temperature (storage/transport)	-40 °C ... 80 °C

## Drawings



Housing cutout

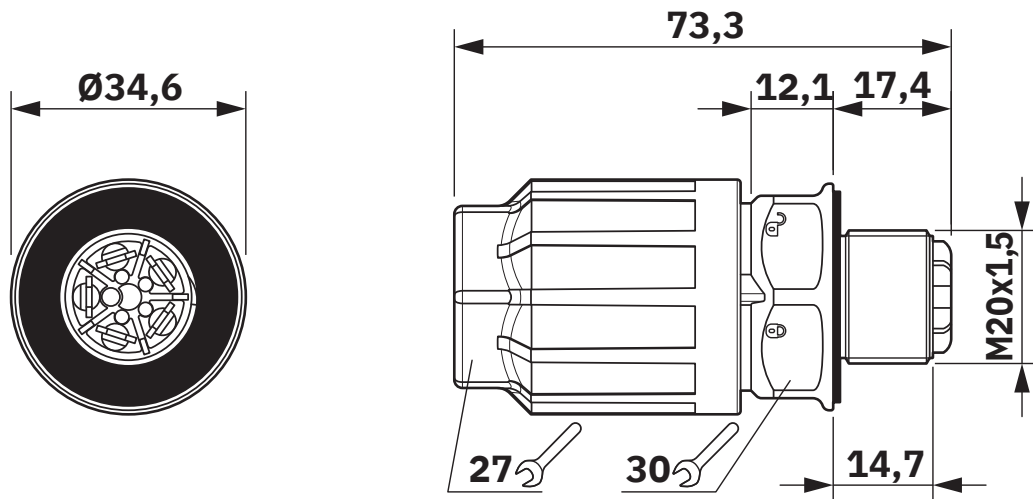
# QPD W 4PE2,5 6-11 M20 FC EX - Panel feed-through



1411395

<https://www.phoenixcontact.com/us/products/1411395>

Dimensional drawing



Classifications

ECLASS

ECLASS-11.0	27440602
ECLASS-13.0	27440602

UNSPSC

UNSPSC 21.0	39121522
-------------	----------

Environmental product compliance

EU RoHS	
Fulfills EU RoHS substance requirements	Yes, No exemptions
China RoHS	
Environment friendly use period (EFUP)	EFUP-E
	No hazardous substances above the limits
EU REACH SVHC	
REACH candidate substance (CAS No.)	No substance above 0.1 wt%

# QPD W 4PE2,5 6-11 M20 FC EX - Panel feed-through



1411395

<https://www.phoenixcontact.com/us/products/1411395>

## Accessories

### CP-QPD 5X2,5 - Coding profile

1404530

<https://www.phoenixcontact.com/us/products/1404530>



Coding profile, red, for insertion into the 5-pos. QUICKON dome and connector, can be positioned in 72° increments.

---

### QPD QSK BK 5X2,5 FS - Protective cap

1404525

<https://www.phoenixcontact.com/us/products/1404525>



Protective cap, plastic, for QUICKON connection, black, with retaining cord, IP68



## QPD W 4PE2,5 6-11 M20 FC EX - Panel feed-through



1411395

<https://www.phoenixcontact.com/us/products/1411395>

### SEALING PLUG 10X16 RD - Closing cap

1400284

<https://www.phoenixcontact.com/us/products/1400284>

Closing cap, for threads pluggable, color: red



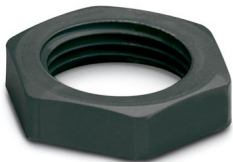
---

### Q-MU-M20 BK - Flat nut

1586099

<https://www.phoenixcontact.com/us/products/1586099>

Flat nut, color: black



# QPD W 4PE2,5 6-11 M20 FC EX - Panel feed-through



1411395

<https://www.phoenixcontact.com/us/products/1411395>

## QSS 27 - Socket wrench

1670646

<https://www.phoenixcontact.com/us/products/1670646>



Allen wrench, for loosening and fastening the QUICKON union nut, WAF 27 mm

---

Phoenix Contact 2024 © - all rights reserved

<https://www.phoenixcontact.com>

Phoenix Contact USA  
586 Fulling Mill Road  
Middletown, PA 17057, United States  
(+717) 944-1300  
[info@phoenixcon.com](mailto:info@phoenixcon.com)