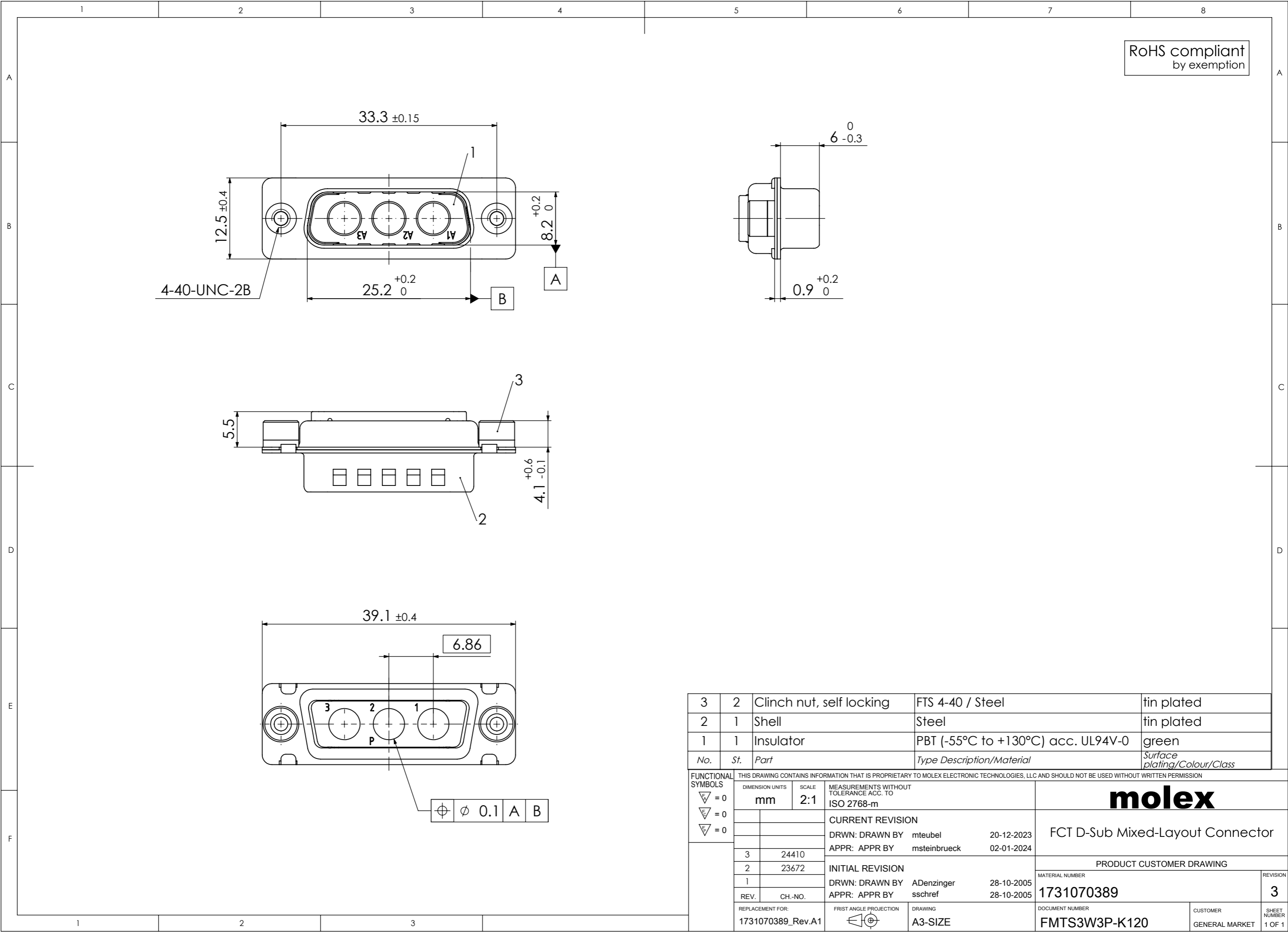
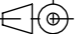


COMMENT:  
ALL RIGHTS ARE RESERVED BY US FOR THIS DRAWING. WITHOUT OUR PRIOR CONSENT,  
IT MAY NEITHER BE DUPLICATED NOR MADE AVAILABLE TO A THIRD PARTY.  
AND IT ALSO MAY NOT BE IMPROPERLY USED BY THE RECEIVER, OR A THIRD PARTY.



3	2	Clinch nut, self locking	FTS 4-40 / Steel	tin plated
2	1	Shell	Steel	tin plated
1	1	Insulator	PBT (-55°C to +130°C) acc. UL94V-0	green
No.	St.	Part	Type Description/Material	Surface plating/Colour/Class

FUNCTIONAL SYMBOLS		THIS DRAWING CONTAINS INFORMATION THAT IS PROPRIETARY TO MOLEX ELECTRONIC TECHNOLOGIES, LLC AND SHOULD NOT BE USED WITHOUT WRITTEN PERMISSION											
<div>▽ = 0</div> <div>▽ = 0</div> <div>▽ = 0</div>		DIMENSION UNITS mm		SCALE 2:1		MEASUREMENTS WITHOUT TOLERANCE ACC. TO ISO 2768-m				molex			
						CURRENT REVISION							
						DRWN: DRAWN BY mteubel 20-12-2023				FCT D-Sub Mixed-Layout Connector			
						APPR: APPR BY msteinbrueck 02-01-2024							
		3 24410				INITIAL REVISION				PRODUCT CUSTOMER DRAWING			
		2 23672											
		1				DRWN: DRAWN BY ADenzinger 28-10-2005 APPR: APPR BY sschref 28-10-2005				MATERIAL NUMBER 1731070389			
		REV.		CH.-NO.									
		REPLACEMENT FOR: 1731070389_Rev.A1		FRIST ANGLE PROJECTION 		DRAWING A3-SIZE				DOCUMENT NUMBER FMTS3W3P-K120			
										CUSTOMER GENERAL MARKET		REVISION 3	
												SHEET NUMBER 1 OF 1	