

Actuator

51-
281.0252F

Distribution by
DigiKey

DigiKey



<https://digikey.eao.com/p/51-281.0252F>

Your product:



51-281.0252F Actuator

MOUNTING

Design:	flush
Mounting type:	Panel mounting

OPERATING-/INDICATION PART

Lens illumination:	illuminative
---------------------------	--------------

ELECTRICAL CHARACTERISTICS

Electric strength:	2500 VAC, 50 Hz, 1 min. between all terminals and earth, according to IEC 61058-1, part 15
Switching rating:	250 V @ 3 A
Protection class:	II
Rated Operational Voltage Ue:	250 VAC/DC according to EN IEC 60947-1
Standards:	According to EN/IEC 61058-1
Switching voltage and switching current:	250 VAC, 5 A (ohmic) 250 VAC, 3 A (Soldering terminal) 250 VAC, 2 A (inductive, $\cos(\phi) = 0.7$) 125 VAC, 3 A (inductive, $\cos(\phi) = 0.7$) 220 VDC, 0.1 A (inductive, L:R = 30 ms) 110 VDC, 0.2 A (inductive, L:R = 30 ms) 60 VDC, 0.7 A (inductive, L:R = 30 ms) 24 VDC, 2 A (inductive, L:R = 30 ms)
Thermal current Ith:	The maximum current in continuous operation and at ambient temperature not exceeding the quoted maximum values. 3 A
Electrical lifetime:	50 000 cycles of operation
Contacts:	1 NC / 1 NO

MECHANICAL CHARATERISTIC

Tightening torque:	Fixing nut max. 0.5 Nm
Contact material:	Gold
Operating Travel:	3 mm
Switching action:	Maintained
Mechanical lifetime:	1 Mio. cycles of operation
Terminal:	Soldering terminal
Switching system:	Self-cleaning, double-break snap action switching system, 1 normally closed and 1 normally open contact per element.
Wire cross section:	Snap-action switching element with tinned soldering terminals at the sides Max. wire diameter 2 wires à 1.2 mm Max. wire cross-section of stranded cable 1 x 1 mm ²
Switching system:	Snap-action switching element
Operating force:	1,8 ... 6 N, depending on the number of switching elements
Weight:	0.005 kg

AMBIENT CONDITION

Operating temperature:	– 25 °C ... + 55 °C, mounted as a block, make sure the heat can escape freely
Climate resistance:	Standard condition, as per DIN EN 60068-2-30 Changing condition, as per DIN EN 60068-2-14
IP front protection:	IP65, according to DIN EN 60529
Vibration resistance:	10 g at 10 Hz...1500 Hz, amplitude 0.75 mm (Sinusoidal), according to DIN EN 60512-4-4, DIN EN 60068-2-6
Storage temperature:	– 40 °C ... + 85 °C
Shock resistance:	15 g for 11 ms, as per DIN / EN 60512-4-3, DIN / EN 60068-2-27 (Single impacts, semi-sinusoidal)

CERTIFICATE

Conformities:	CE, UKCA, 2011 / 65 / EC (RoHS), 2014 / 30 / EU (EMC), 2014 / 35 / EU (LVD)
REACH:	REACH compliant
RoHS:	RoHS compliant
Approbations:	CB (IEC 61058-1), CQC, CSA, DNV, EAC, ENEC (EN 61058-1), UL, VDE

OTHER

max. number of switching elements:	4
---	---

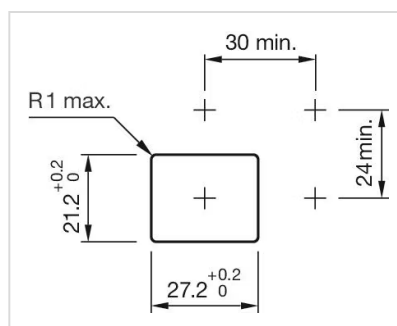
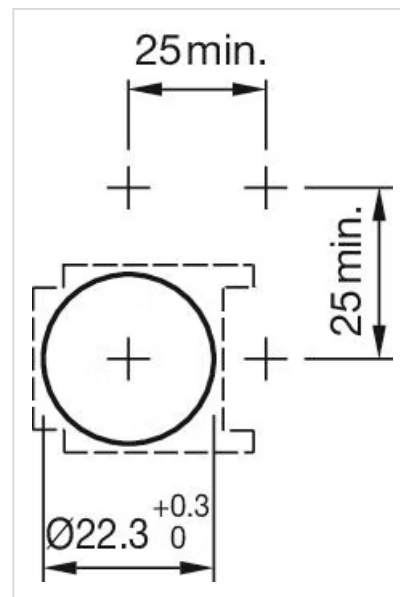
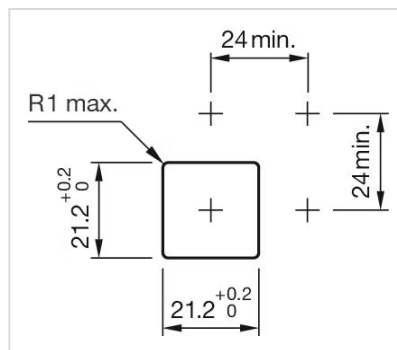
Short Description:

Actuator, illuminative, 1 NC / 1 NO, Maintained, Soldering terminal, IP65, according to DIN EN 60529

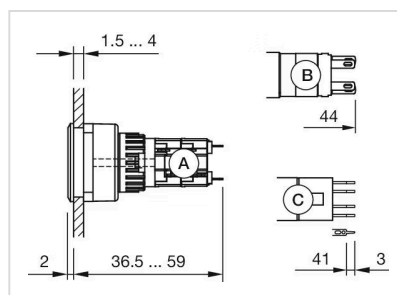
Housing colour:

Black

Mounting cut-outs:



Dimension drawings:

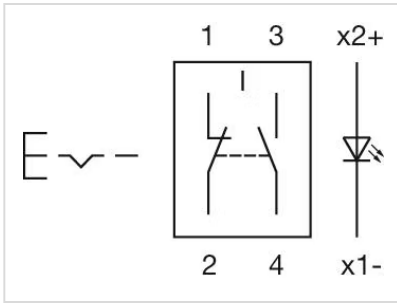


A = Solder terminal

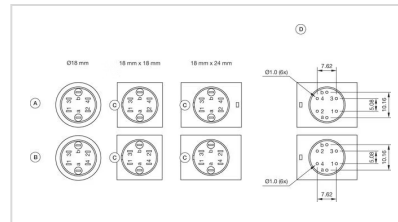
B = Plug-in terminal 2.8 mm x 0.5 mm

C = Universal terminal 2.0 mm x 0.5 mm

Wiring diagrams:



Component layouts:



- A = Universal terminal (rear side)
- B = Plug-in terminal (rear side)
- C = Anti twist device
- D = Drilling plan