

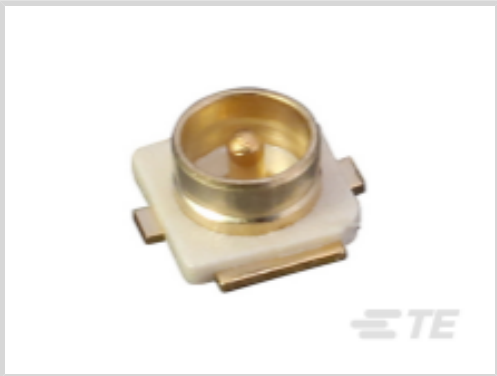
CONMHF1-SMD-G-T

✓ ACTIVE

TE Internal #: CONMHF1-SMD-G-T
UMCC GEN 1 RF Interface, Jack, 50 ohm, Snap-On, 6 GHz
Operating Frequency, Cable-to-Board, 1 Position, Printed Circuit
Board, Board Mount
[View on TE.com >](#)



Connectors > RF Connectors > Coax Connectors



RF Interface: **UMCC GEN 1**
RF Connector Style: **Jack**
Impedance: **50 Ω**
RF Connector Coupling Mechanism: **Snap-On**
Operating Frequency: **6 GHz**

Features

Product Type Features

Connector Product Type	Connector Assembly
RF Interface	UMCC GEN 1
RF Connector Style	Jack
Connector System	Cable-to-Board
Sealable	No
Connector & Contact Terminates To	Printed Circuit Board

Configuration Features

Number of Positions	1
Number of Coaxial Contacts	1

Electrical Characteristics

Impedance	50 Ω
-----------	------

Body Features

Body Material	Copper Alloy
Body Plating Material	Gold

Mechanical Attachment

RF Connector Coupling Mechanism	Snap-On
Connector Mounting Type	Board Mount



Operation/Application

Circuit Application	Signal
Operating Frequency	6 GHz

Other

Dielectric Material	LCP
---------------------	-----

Product Compliance

For compliance documentation, visit the product page on TE.com>

EU RoHS Directive 2011/65/EU	Compliant with Exemptions
EU ELV Directive 2000/53/EC	Not Yet Reviewed
China RoHS 2 Directive MIIT Order No 32, 2016	Restricted Materials Above Threshold
EU REACH Regulation (EC) No. 1907/2006	Current ECHA Candidate List: JUNE 2024 (241) Candidate List Declared Against: JUNE 2024 (241) SVHC > Threshold: Pb (4% in Component Part) Article Safe Usage Statements: Do not eat, drink or smoke when using this product. Wash thoroughly after handling. Recycle if possible and dispose of the article by following all applicable governmental regulations relevant to your geographic location.
Halogen Content	Low Bromine/Chlorine - Br and Cl < 900 ppm per homogenous material. Also BFR /CFR/PVC Free
Solder Process Capability	Not reviewed for solder process capability

Product Compliance Disclaimer

This information is provided based on reasonable inquiry of our suppliers and represents our current actual knowledge based on the information they provided. This information is subject to change. The part numbers that TE has identified as EU RoHS compliant have a maximum concentration of 0.1% by weight in homogenous materials for lead, hexavalent chromium, mercury, PBB, PBDE, DBP, BBP, DEHP, DIBP, and 0.01% for cadmium, or qualify for an exemption to these limits as defined in the Annexes of Directive 2011/65/EU (RoHS2). Finished electrical and electronic equipment products will be CE marked as required by Directive 2011/65/EU. Components may not be CE marked. Additionally, the part numbers that TE has identified as EU ELV compliant have a maximum concentration of 0.1% by weight in homogenous materials for lead, hexavalent chromium, and mercury, and 0.01% for cadmium, or qualify for an exemption to these limits as defined in the Annexes of Directive 2000/53/EC (ELV). Regarding the REACH Regulations, TE’s information on SVHC in articles for this part number is still based on the European Chemical Agency (ECHA) ‘Guidance on requirements for substances in articles’(Version: 2, April 2011), applying the 0.1% weight on weight concentration threshold at the finished product level. TE is aware of the European Court of Justice ruling of September 10th, 2015 also known as O5A (Once An Article Always An Article) stating that, in case of ‘complex object’, the threshold for a SVHC must be applied to both the product as a whole and simultaneously to each of the articles forming part of its composition. TE has evaluated this ruling based on the new ECHA “Guidance on requirements for substances in articles” (June 2017, version 4.0) and will be updating its statements accordingly.

Compatible Parts

CONMHF1-SMD-G-T

UMCC GEN 1 RF Interface, Jack, 50 ohm, Snap-On, 6 GHz Operating Frequency, Cable-to-Board, 1 Position, Printed Circuit Board, Board Mount



 <p>TE Part # 2015357-3 C/A, UMCC/UMCC, 1.37 OD CABLE, 100MM LON</p>	 <p>TE Part # 2118651-6 RF CA,UMCC GEN1-GEN1,1.13MM, L90MM,GREY</p>	 <p>TE Part # 2015699-2 C/A, UMCC/UMCC, 0.80 OD CABLE, 200 MM</p>	 <p>TE Part # 1-2118651-0 RF CA,UMCC GEN1-GEN1,1.13MM CABLE,L60MM</p>
 <p>TE Part # L9000037-01 Antenna 2.4 FPC LH 45x7 100 UFL</p>	 <p>TE Part # L9000039-01 Antenna 2.4 FPC LH 45x7 150 MMCX</p>	 <p>TE Part # L9000041-01 Antenna 2.4 FPC LH 45x7 200 MHF4</p>	 <p>TE Part # L9000043-01 Antenna 2.4 FPC LH 45x7 200 UFL</p>
 <p>TE Part # L9000046-01 Antenna 2.4 FPC LV 7x45 200 UFL</p>	 <p>TE Part # L9000048-01 Antenna 2.4 FPC LV 7x45 150 MMCX</p>	 <p>TE Part # L9000050-01 Antenna 2.4 FPC LV 7x45 100 MHF4</p>	 <p>TE Part # L9000052-01 Antenna 2.4 FPC LV 7x45 200 UFL</p>
 <p>TE Part # L9000054-01 Antenna 2.4 FPC SH 12x8 100 UFL</p>	 <p>TE Part # L9000056-01 Antenna 2.4 FPC SH 12x8 150 UFL</p>	 <p>TE Part # L9000058-01 Antenna 2.4 FPC SH 12x8 50 UFL</p>	 <p>TE Part # L9000060-01 Antenna 2.4 FPC SF 25x20 100 UFL</p>
 <p>TE Part # L9000062-01 Antenna 2.4 FPC SF 25x20 150 UFL</p>	 <p>TE Part # L9000064-01 Antenna 2.4 FPC SF 25x20 200 UFL</p>	 <p>TE Part # L9000066-01 Antenna 2.4 FPC SF 25x20 50 UFL</p>	 <p>TE Part # L9000068-01 Antenna 2.4 FPC SH 25x20 100 UFL</p>

Customers Also Bought

CONMHF1-SMD-G-T

UMCC GEN 1 RF Interface, Jack, 50 ohm, Snap-On, 6 GHz Operating Frequency, Cable-to-Board, 1 Position, Printed Circuit Board, Board Mount



TE Part #1623181-1
CRG0805 1% 2K7

TE Part #3-1624113-5
3650 0805 27nH 5% 2K RL

TE Part #5-1879352-7
RR02 5% 68R AMMO

TE Part #T4040110044-000
RPC-SPE-M8-FF-4CON-LBUS

TE Part #TB1147D4722-004
RPC-M8-MS-MS-4CON-P-3.0SH

TE Part #224514-E
MSPEED 50 F SMD F8 * AB VV 137 094
** E

TE Part #224561-E
MSPEED 50 M SMD M10 * AB VV 137
176 * *

TE Part #CONMMCX001-SMD-T
MMCX Jack 50 Ohm PCB Surface
Mount

TE Part #CONBNC002
BNC Jack 50 Ohm PCB Through Hole

Documents

Product Drawings

U.FL/MHF1 Jack 50 Ohm PCB Surface Mount

English

CAD Files

3D PDF

3D

Customer View Model

ENG_CVM_CVM_CONMHF1-SMD-G-T_A.2d_dxf.zip

English

Customer View Model

ENG_CVM_CVM_CONMHF1-SMD-G-T_A.3d_stp.zip

English

Customer View Model

ENG_CVM_CVM_CONMHF1-SMD-G-T_A.3d_igs.zip

English

By downloading the CAD file I accept and agree to the [Terms and Conditions](#) of use.

Datasheets & Catalog Pages



U.FL-Type Jack PCB Surface-Mount Connector

English