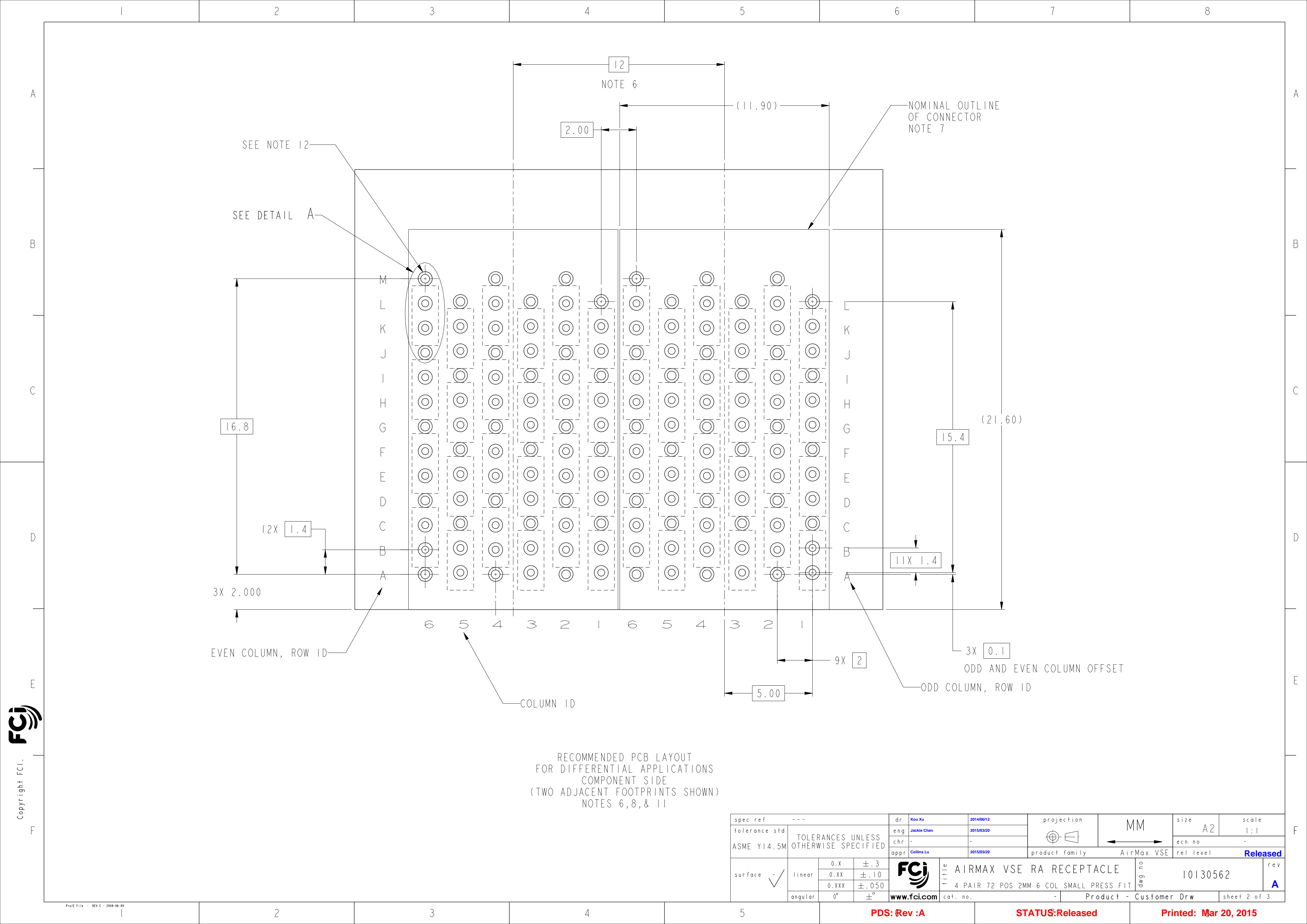
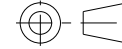



spec ref		---		dr		Kou Xu	2014/06/12	projection			size		A2	scale		1:1
tolerance std				eng		Jackie Chen	2015/03/20				ecn no		-			
ASME Y14.5M		TOLERANCES UNLESS OTHERWISE SPECIFIED		chr		-	-				rel level		Released			
				appr		Collins Lu	2015/03/20	product family		AirMax VSE						
surface				linear				title		AIRMAX VSE RA RECEPTACLE		dwg no		10130562		rev
								4 PAIR 72 POS 2MM 6 COL SMALL PRESS FIT								A
		angular		0° ±0°		www.fci.com		cat. no.		-		Product - Customer Drw		sheet 1 of 3		



RECOMMENDED PCB LAYOUT
FOR DIFFERENTIAL APPLICATIONS
COMPONENT SIDE
(TWO ADJACENT FOOTPRINTS SHOWN)
NOTES 6, 8, & 11

spec ref		---		dr		Kou Xu		2014/06/12		projection				size		A2		scale		1:1	
tolerance std		ASME Y14.5M		TOLERANCES UNLESS OTHERWISE SPECIFIED		eng		Jackie Chen		2015/03/20		chr		-		ecn no		-			
						appr		Collins Lu		2015/03/20		product family		AirMax VSE		rel level		Released			
surface				linear		0.X		±.3		FCi		title		AIRMAX VSE RA RECEPTACLE		dwg no		10130562		rev	
						0.XX		±.10						4 PAIR 72 POS 2MM 6 COL SMALL PRESS FIT						A	
						0.XXX		±.050													
				angular		0°		±°		www.fci.com		cat. no.		-		Product - Customer Drw		sheet 2 of 3			

1

2

3

4

5

6

7

8

PRODUCT NUMBER	PRESS-FIT TAIL PLATING TYPE
10130562-101LF	TIN OVER NICKEL (LEAD FREE)

1 - CONNECTOR MATERIALS:
HOUSING: HIGH TEMP THERMOPLASTIC, NATURAL, UL94-V0
IMLA PLASTIC: HIGH TEMP THERMOPLASTIC, BLACK, UL94-V0
CONTACT: COPPER ALLOY
ORGANIZER: HIGH TEMP THERMOPLASTIC, WHITE, UL94-V0

2 - CONTACT PLATING:
SEPARABLE INTERFACE:
PERFORMANCE-BASED PLATING, QUALIFIED TO MEET THE REQUIREMENTS OF FCI PRODUCT SPECIFICATION GS-12-0956 INCLUDING TELCORDIA GR-1217-CORE (NOVEMBER 1995) CENTRAL OFFICE TEST SEQUENCE

PRESS-FIT TAILS: SEE TABLE

3 - PRODUCT SPECIFICATION: GS-12-0956

4 - APPLICATION SPECIFICATION: GS-20-0305.

5 - PRODUCT MARKING, (PROTOTYPE, PART NUMBER & LOT CODE), ON THIS SURFACE.

6 - THE MINIMUM CENTERLINE SPACING BETWEEN ADJACENT MODULES IS 12.0 MM.

7 - CONNECTOR OUTLINE MAY BE SCREEN PRINTED ONTO CUSTOMER PCB TO BE USED AS A GUIDE FOR MANUAL CONNECTOR PLACEMENT.

8 - REFER TO CUSTOMER DRAWING 10104444 FOR INFORMATION ON PCB HOLE DIAMETERS AND PLATING OPTIONS

9 - LEAD FREE PRODUCT MEETS THE EUROPEAN UNION DIRECTIVES & OTHER COUNTRY REGULATIONS AS DESCRIBED IN GS-22-008

10 - PACKAGING MEETS GS-14-920 LEAD FREE LABELING SPECIFICATION.

11 - GROUND CONTACTS (C,F,I AND L IN ODD COLUMNS AND A,D,G AND J, EVEN COLUMNS) REQUIRE (Ø0.500) FINISHED HOLES. SIGNAL LOCATIONS REQUIRE (Ø0.400) FINISHED HOLES.

12 - THESE OUTER VIAS (M) ARE OPTIONAL. WHILE NO CONNECTOR EONS ARE PRESSED INTO THESE HOLES, WE RECOMMEND (Ø 0.500) FINISHED HOLES AT THESE LOCATIONS TO PROVIDE GROUND SYMMETRY THROUGH THE PCB

10130562-101 OR -101LF

48X(Ø0.400) SIGNAL
NOTES 8 AND 11

1.50

1.40

3.40

27X(Ø0.500) GROUND AND M VIAS
NOTES 8, 11 AND 12

DETAIL A
SCALE 16:1

spec ref	---	dr	Kou Xu	2014/06/12	projection	MM	size	A2	scale	4:1
tolerance std	TOLERANCES UNLESS OTHERWISE SPECIFIED	eng	Jackie Chen	2015/03/20	chr	-	ecn no	-	rel level	Released
ASME Y14.5M		appr	Collins Lu	2015/03/20	product family		rel level			
surface	linear	0.X	±.3	0.XX	±.10	0.XXX	±.050	angular	0°	±°
		FCJ		title		AIRMAX VSE RA RECEPTACLE		dwg no		10130562
		www.fci.com		cat. no.		Product - Customer Drw		sheet 3 of 3		rev
		PDS: Rev :A		STATUS: Released		Printed: Mar 20, 2015				

Mouser Electronics

Authorized Distributor

Click to View Pricing, Inventory, Delivery & Lifecycle Information:

[FCI / Amphenol:](#)

[10130562-101LF](#)