

1418631

<https://www.phoenixcontact.com/us/products/1418631>

Please be informed that the data shown in this PDF document is generated from our online catalog. Please find the complete data in the user documentation. Our general terms of use for downloads are valid.



Sample set, 4-position, Socket, straight, M12, coding: T, PCB mounting, SMD

Commercial data

| | |
|--------------------------------------|---------------|
| Item number | 1418631 |
| Packing unit | 5 pc |
| Minimum order quantity | 5 pc |
| Product key | ABQXAA |
| GTIN | 4055626162454 |
| Weight per piece (including packing) | 7,140 g |
| Weight per piece (excluding packing) | 7,000 g |
| Country of origin | DE |

SACC-CI-M12FST-4P SMD-SP - Sample set



1418631

<https://www.phoenixcontact.com/us/products/1418631>

Technical data

Notes

| | |
|--------------------|--|
| Notes on operation | The electrical and mechanical data specified assume that the connector pair is correctly locked and mounted. If the connector is unlocked and if there is a danger of contamination, the connector must be sealed using a protective cap > IP54. Influences arising from litz wires, cables or PCB assembly must also be taken into consideration. |
|--------------------|--|

Product properties

| | |
|---------------------|----------------|
| Product type | Contact insert |
| Number of positions | 4 |
| Coding | T |
| Thread type | M12 |

Insulation characteristics

| | |
|----------------------|-----|
| Overvoltage category | III |
| Degree of pollution | 3 |

Electrical properties

| | |
|-----------------------|----------------------------|
| Rated surge voltage | 1.5 kV |
| Contact resistance | $\leq 3 \text{ m}\Omega$ |
| Insulation resistance | $\geq 100 \text{ M}\Omega$ |
| Nominal voltage U_N | 60 V |
| Nominal current I_N | 12 A |

Connection data

| | |
|-------------------|-----|
| Connection method | SMD |
|-------------------|-----|

Material specifications

| | |
|--|------|
| Flammability rating according to UL 94 | V0 |
| Contact material | CuZn |
| Contact surface material | Au |
| Contact carrier material | PA |

Connector

Connection 1

| | |
|-------------------|----------|
| Head design | Socket |
| Head cable outlet | straight |
| Head thread type | M12 |
| Coding | T |

Mechanical properties

Mechanical data

SACC-CI-M12FST-4P SMD-SP - Sample set



1418631

<https://www.phoenixcontact.com/us/products/1418631>

| | |
|-----------------------------|-------|
| Insertion/withdrawal cycles | > 100 |
|-----------------------------|-------|

Environmental and real-life conditions

Ambient conditions

| | |
|--|--|
| Degree of protection (when plugged in) | IP67 (correctly plugged in and locked) |
| Degree of protection | IP67 (correctly plugged in and locked) |
| | IP67, when plugged in |
| Ambient temperature (operation) | -25 °C ... 105 °C |
| | -55 °C ... 105 °C (without mechanical actuation) |

Standards and regulations

M12

| | |
|--------------------------|-----------------|
| Standard designation | M12 connector |
| Standards/specifications | IEC 61076-2-111 |
| Note | In line with |

Mounting

| | |
|---------------|--------------|
| Mounting type | PCB mounting |
|---------------|--------------|

SACC-CI-M12FST-4P SMD-SP - Sample set

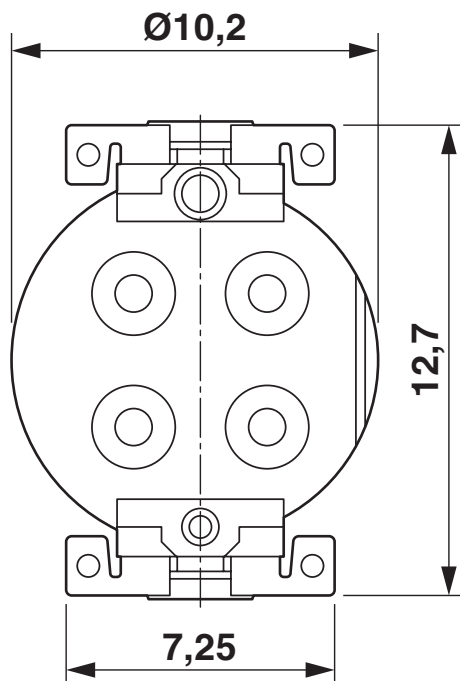
1418631

<https://www.phoenixcontact.com/us/products/1418631>



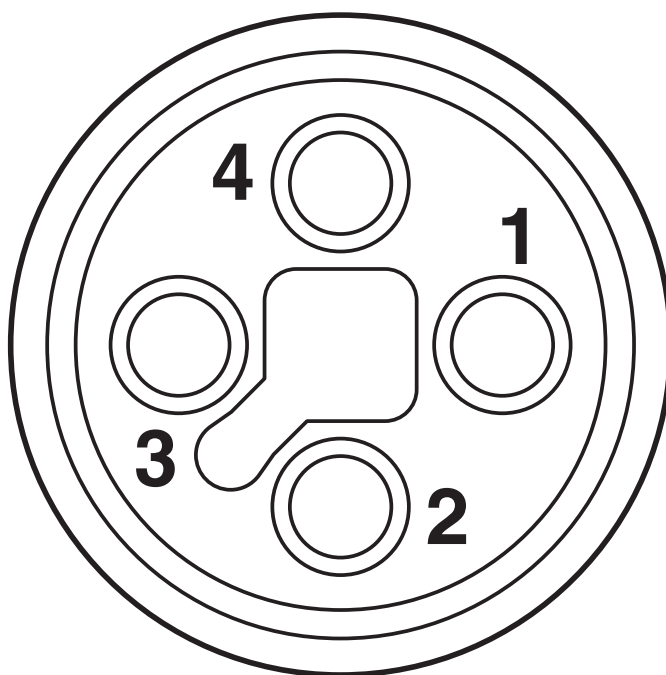
Drawings

Dimensional drawing



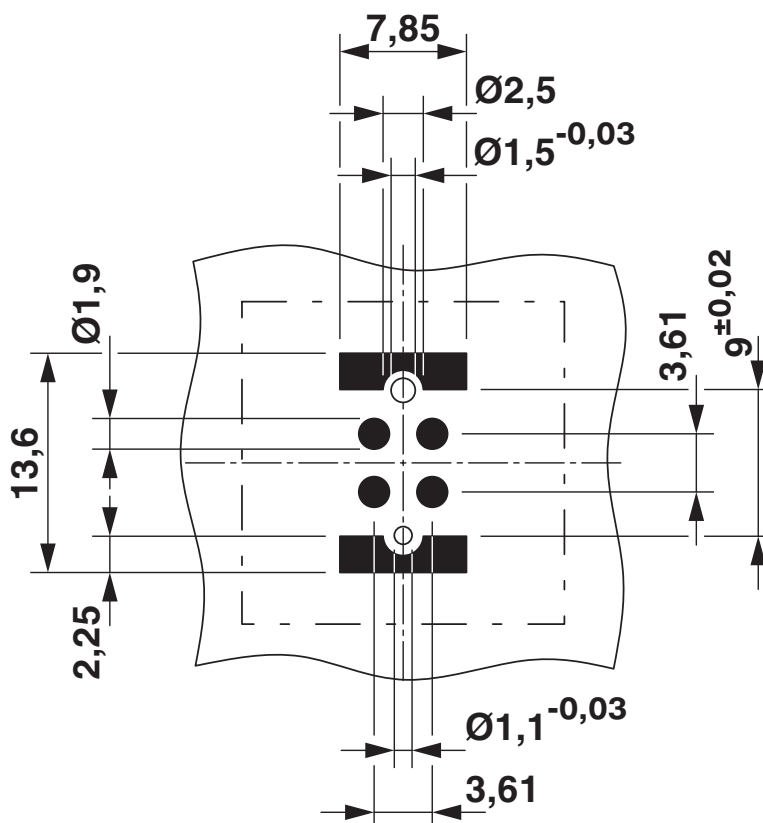
View of solder side

Schematic diagram



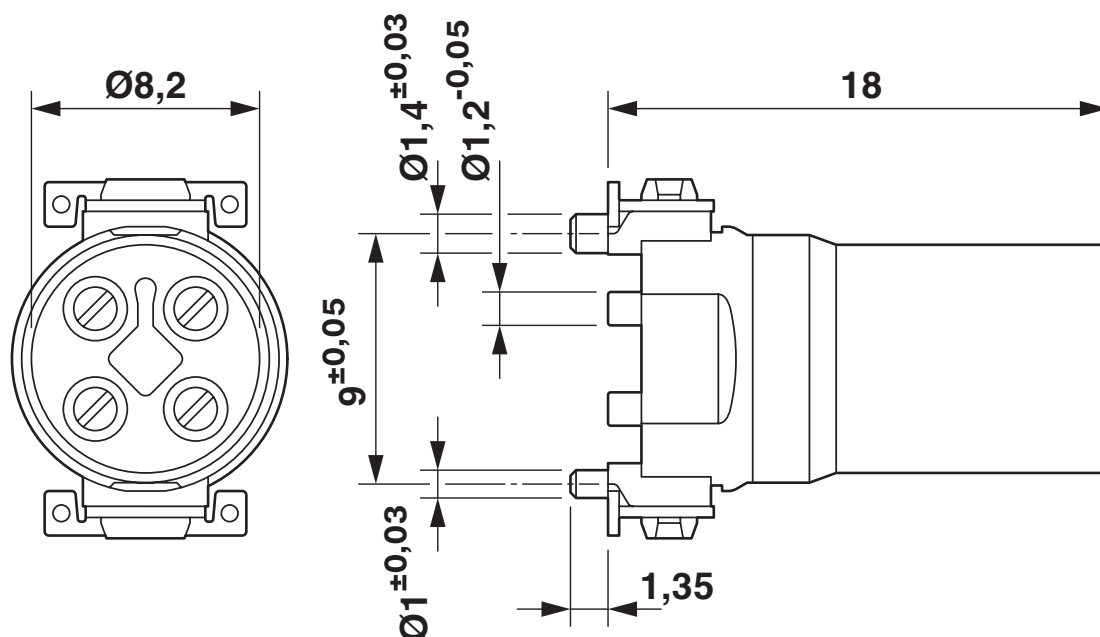
Pin assignment of M12 socket, 4-pos., T-coded, socket side view

Drilling plan/solder pad geometry



Soldering pad geometry

Dimensional drawing



SACC-CI-M12FST-4P SMD-SP - Sample set





1418631

<https://www.phoenixcontact.com/us/products/1418631>

Approvals

To download certificates, visit the product detail page: <https://www.phoenixcontact.com/us/products/1418631>

| | | | | |
|--|-----------------------|-----------------------|-------------------|-----------------------------|
|  cUL Recognized Approval ID: E468743-20190917 | | | | |
| | Nominal voltage U_N | Nominal current I_N | Cross section AWG | Cross section mm^2 |
| | 63 V | 8 A | - | - |

| | | | | |
|---|-----------------------|-----------------------|-------------------|-----------------------------|
|  UL Recognized Approval ID: E468743-20190917 | | | | |
| | Nominal voltage U_N | Nominal current I_N | Cross section AWG | Cross section mm^2 |
| | 63 V | 10 A | - | - |

| | | | | |
|-------------------------|--|--|--|--|
| cULus Recognized | | | | |
|-------------------------|--|--|--|--|

SACC-CI-M12FST-4P SMD-SP - Sample set



1418631

<https://www.phoenixcontact.com/us/products/1418631>

Classifications

ECLASS

| | |
|-------------|----------|
| ECLASS-11.0 | 27440223 |
| ECLASS-12.0 | 27440223 |
| ECLASS-13.0 | 27440223 |

ETIM

| | |
|----------|----------|
| ETIM 9.0 | EC003557 |
|----------|----------|

UNSPSC

| | |
|-------------|----------|
| UNSPSC 21.0 | 39121400 |
|-------------|----------|

Environmental product compliance

| | |
|---|---|
| EU RoHS | |
| Fulfills EU RoHS substance requirements | Yes |
| Exemption | 6(c) |
| China RoHS | |
| Environment friendly use period (EFUP) | EFUP-50 |
| | An article-related China RoHS declaration table can be found in the download area for the respective article under "Manufacturer declaration". For all articles with EFUP-E, no China RoHS declaration table issued and required. |
| EU REACH SVHC | |
| REACH candidate substance (CAS No.) | Lead(CAS: 7439-92-1) |
| SCIP | f7b026bc-2922-4fb7-ae14-fe25130a7bd7 |

SACC-CI-M12FST-4P SMD-SP - Sample set



1418631

<https://www.phoenixcontact.com/us/products/1418631>

Accessories

SACC-BP-F-M12/M15-6-SMD - Housing screw connection

1414021

<https://www.phoenixcontact.com/us/products/1414021>



Housing screw connection, Socket, M12, Rear mounting, Alternative product in accordance with RoHS II without Exemption 6c (Pb < 0.1 %) item no.: 1239058

SACC-BP-F-M12/M15-6-SMD SCO - Housing screw connection

1414023

<https://www.phoenixcontact.com/us/products/1414023>



Housing screw connection, Socket, M12-SPEEDCON, Rear mounting, M15 x 1, Alternative product in accordance with RoHS II without Exemption 6c (Pb < 0.1 %) item no.: 1239059

SACC-CI-M12FST-4P SMD-SP - Sample set

1418631

<https://www.phoenixcontact.com/us/products/1418631>



SACC-FP-F-M12/M14 SMD - Housing screw connection

1412079

<https://www.phoenixcontact.com/us/products/1412079>

M12 female connector, front mounting SMD with M14 screw fastening



SACC-FP-F-M12/PRESS SMD - Housing screw connection

1412081

<https://www.phoenixcontact.com/us/products/1412081>

Housing screw connection, Socket, M12, Front mounting, Alternative product in accordance with RoHS II without Exemption 6c (Pb < 0.1 %) item no.: 1238973



SACC-CI-M12FST-4P SMD-SP - Sample set

1418631

<https://www.phoenixcontact.com/us/products/1418631>



SACC-BP-F-M12/SMD-0,9/1,6-9TIP - Housing screw connection

1419569

<https://www.phoenixcontact.com/us/products/1419569>



Housing screw connection, Socket, M12, Rear mounting, Alternative product in accordance with RoHS II without Exemption 6c (Pb < 0.1 %) item no.: 1239268

SACC-BP-F-M12/SMD-1,6/2,3-9TIP - Housing screw connection

1419570

<https://www.phoenixcontact.com/us/products/1419570>



Housing screw connection, Socket, M12, Rear mounting

SACC-CI-M12FST-4P SMD-SP - Sample set

1418631

<https://www.phoenixcontact.com/us/products/1418631>



SACC-BP-F-M12/SMD-2,3/3,0-9TIP - Housing screw connection

1419571

<https://www.phoenixcontact.com/us/products/1419571>



Housing screw connection, Socket, M12, Rear mounting, Alternative product in accordance with RoHS II without Exemption 6c (Pb < 0.1 %) item no.: 1239270

SACC-BP-F-FIX/NUT-BK-SMD - Fixing sleeve

1419568

<https://www.phoenixcontact.com/us/products/1419568>



Fixing sleeve for M12 housing screw connection with tolerance-compensating function, for SMD-solderable M12 socket contact inserts.

SACC-CI-M12FST-4P SMD-SP - Sample set

1418631

<https://www.phoenixcontact.com/us/products/1418631>



SACC-BP-F-FIX/NUT-CY-SMD - Fixing sleeve

1419565

<https://www.phoenixcontact.com/us/products/1419565>



Fixing sleeve for M12 housing screw connection with tolerance-compensating function, for SMD-solderable M12 socket contact inserts.

SACC-BP-F-FIX/NUT-GN-SMD - Fixing sleeve

1419566

<https://www.phoenixcontact.com/us/products/1419566>



Fixing sleeve for M12 housing screw connection with tolerance-compensating function, for SMD-solderable M12 socket contact inserts.

SACC-CI-M12FST-4P SMD-SP - Sample set

1418631

<https://www.phoenixcontact.com/us/products/1418631>



SACC-BP-F-FIX/NUT-VT-SMD - Fixing sleeve

1419567

<https://www.phoenixcontact.com/us/products/1419567>



Fixing sleeve for M12 housing screw connection with tolerance-compensating function, for SMD-solderable M12 socket contact inserts.

Phoenix Contact 2024 © - all rights reserved

<https://www.phoenixcontact.com>

Phoenix Contact USA
586 Fulling Mill Road
Middletown, PA 17057, United States
(+717) 944-1300
info@phoenixcon.com