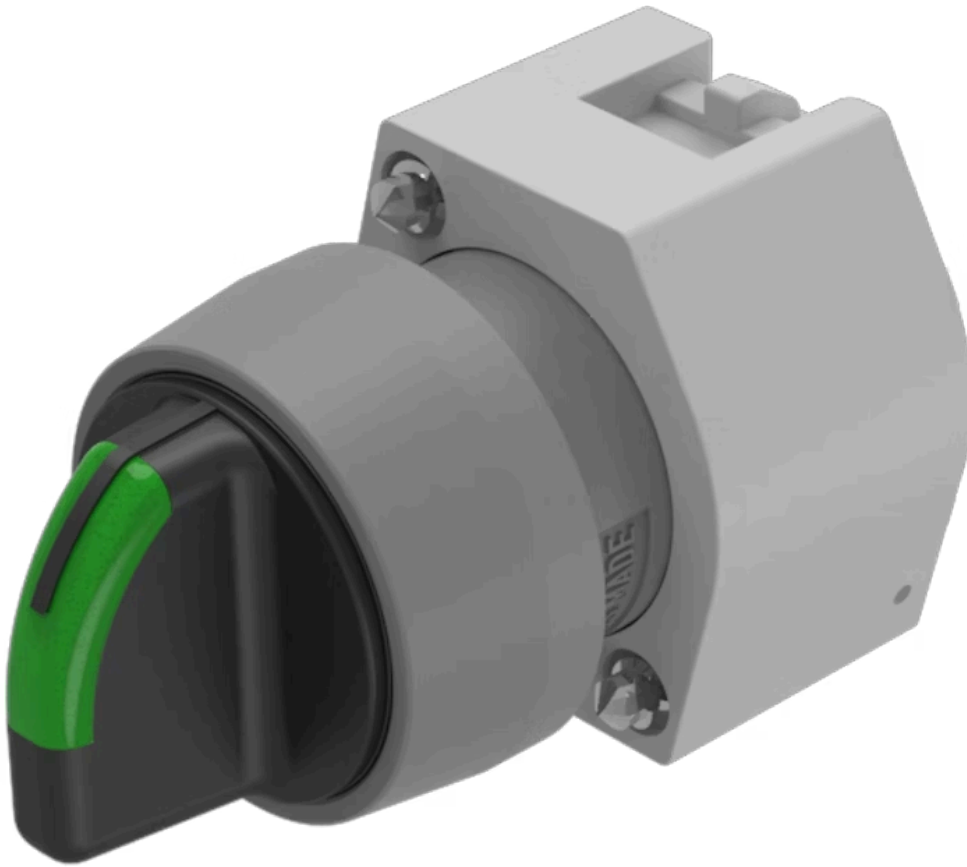


Actuator

704.402.01

Distribution by
DigiKey

DigiKey



<https://digikey.eao.com/p/704.402.01>

Your product:



704.402.01 Actuator

FRONT

Front bezel colour:	Grey
Front dimension:	Ø 29 mm
Front bezel material:	Plastic

MOUNTING

Design:	raised
---------	--------

OPERATING-/INDICATION PART

Lever shape:	short
Lever colour:	Black
Lever material:	plastic

ELECTRICAL CHARACTERISTICS

Standards:	The switches comply with the "Standards for low-voltage switching devices" DIN EN 60947-1
------------	---

MECHANICAL CHARACTERISTIC

Mechanical lifetime:	≤2.5 Mio. cycles of operation
Weight:	0.034 kg
Switching positions:	3 positions
Switching action:	Maintained - Rest - Maintained
Switching angle:	42° left / 42° right

AMBIENT CONDITION

Storage temperature: – 40 °C ... + 85 °C

IP Protection: IP65 front side

Operating temperature: – 40 °C ... + 55 °C

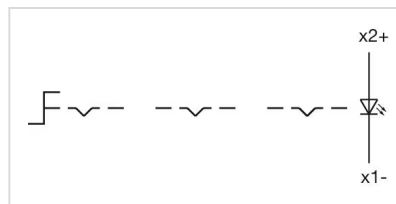
OTHER

Hints: Max. 3 switching elements can be clipped on

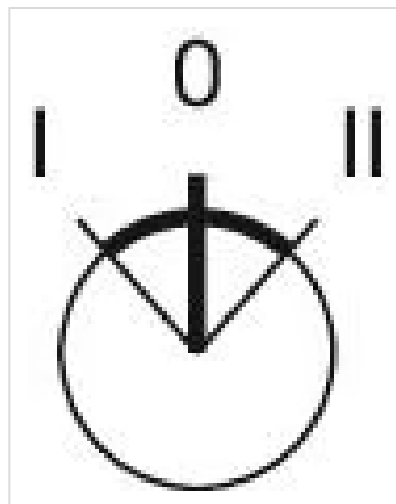
max. number of switching elements: 3

Short Description: Actuator, Ø 29 mm, optional illuminative, Black, short, Grey, Plastic, Maintained - Rest - Maintained

Wiring diagrams:



Switching positions:

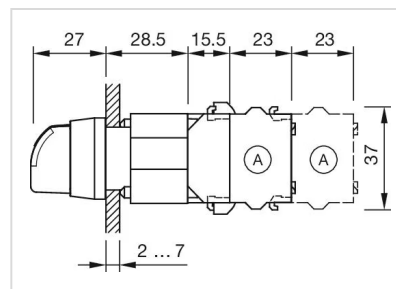


Mounting cut-outs:



A = Screw terminal
 B = Push-in terminal (PIT)
 C = Plug-in terminal 6.3 mm x 0.8 mm
 D = Double plug-in terminal 6.3 mm x 0.8 mm

Dimension drawings:



A = Screw terminal