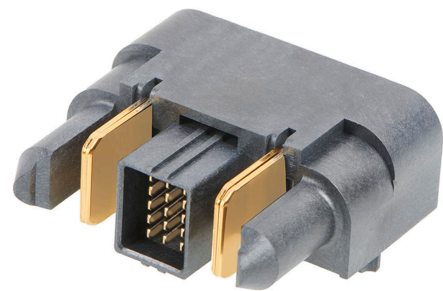




**Part Number :** [2141130011](#)  
**Product Description :** EXTreme Guardian  
Right-Angle Plug Assembly with Guide Pins, 1  
Power Circuit, 15 Signal Circuits, 1 Power  
Circuit  
**Series Number :** 214113  
**Status :** Active  
**Product Category :** Board-to-Board  
Connectors



## Documents & Resources


**Drawings**  
[2141130011\\_sd.pdf](#)

**3D Models and Design Files**  
[2141130011\\_stp.zip](#)

**Specifications**  
[2141130000-PS-000.pdf](#)

## Product Environment Compliance

### Compliance

GADSL/IMDS	Compliant with Exemption 44
China RoHS	
EU ELV	Not Relevant
Low-Halogen Status	Low-Halogen per IEC 61249-2-21
REACH SVHC	Not Contained per D(2024)4144-DC (27 June 2024)
EU RoHS	Compliant per EU 2015/863

### Multiple Part Product Compliance Statements

- Eu RoHS
- REACH SVHC
- Low-Halogen

### Multiple Part Industry Compliance Documents

- IPC 1752A Class C
- IPC 1752A Class D

- Molex Product Compliance Declaration
- IEC-62474
- chemSHERPA (xml)

## EU RoHS Certificate of Compliance

---

### Part Details

#### General

Status	Active
Category	Board-to-Board Connectors
Series	214113
Description	EXTreme Guardian Right-Angle Plug Assembly with Guide Pins, 1 Power Circuit, 15 Signal Circuits, 1 Power Circuit
Application	Board-to-Board, Power, Signal
Component Type	PCB Header
Product Name	EXTreme Guardian HD
UPC	193264618644

#### Agency

CSA	LR19980
UL	E29179

#### Electrical

Current - Maximum per Contact	80.0A
Voltage - Maximum	125V

#### Physical

Breakaway	No
Circuits (Loaded)	17
Circuits (maximum)	17
Color - Resin	Black
Durability (mating cycles max)	200
First Mate / Last Break	No
Flammability	94V-0
Glow-Wire Capable	No

Guide to Mating Part	Yes
Keying to Mating Part	None
Lock to Mating Part	No
Material - Metal	High Conductivity Copper
Material - Plating Mating	Gold
Material - Plating Termination	Tin
Material - Resin	Liquid Crystal Polymer
Net Weight	14.599/g
Number of Rows	1, 5
Orientation	Right Angle
Packaging Type	Tray
PC Tail Length	2.53mm, 3.30mm
PCB Locator	Yes
PCB Retention	Yes
PCB Thickness - Recommended	1.58mm
Pitch - Mating Interface	2.00mm
Plating min - Mating	0.762µm
Plating min - Termination	2.540µm
Polarized to Mating Part	Yes
Polarized to PCB	Yes
(p)ower-(s)ignal Configuration	1p - 15s - 1p
Temperature Range - Operating	-40° to +105°C
Termination Interface Style	Through Hole - Compliant Pin

---

## Mates With / Use With

### Mates with Part(s)

Description	Part Number
EXTreme Guardian Vertical Receptacle Assembly with Guide Receivers, 1 Power Circuit, 15 Signal Circuits, 1 Power Circuit	<u>2141140002</u>
EXTreme Guardian Right-Angle Receptacle Assembly with Guide Receivers, 1 Power Circuit, 15 Signal Circuits, 1 Power Circuit	<u>2141150011</u>

---

