

# Actuator

704.413.010I

Distribution by  
DigiKey

**DigiKey**



<https://digikey.eao.com/p/704.413.010I>

Your product:

---



## 704.413.010I Actuator

### FRONT

Front dimension:	Ø 35 mm
Front bezel colour:	Black
Front bezel material:	Aluminium

### MOUNTING

Design:	flush
Mounting cut-out:	Ø 30.5 mm

### OPERATING-/INDICATION PART

Lever material:	plastic
Lever colour:	Black
Lever shape:	short

### ELECTRICAL CHARACTERISTICS

Standards:	The switches comply with the "Standards for low-voltage switching devices" DIN EN 60947-1
------------	---

### MECHANICAL CHARACTERISTIC

<b>Switching angle:</b>	42° right
<b>Weight:</b>	0.056 kg
<b>Mechanical lifetime:</b>	≤2.5 Mio. cycles of operation
<b>Switching positions:</b>	2 positions
<b>Switching action:</b>	Rest - Momentary

## AMBIENT CONDITION

<b>Storage temperature:</b>	– 40 °C ... + 85 °C
<b>IP Protection:</b>	IP65 front side
<b>Operating temperature:</b>	– 40 °C ... + 55 °C

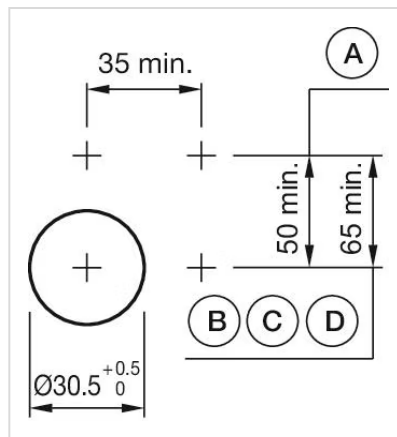
## OTHER

**Short Description:** Actuator, Ø 30.5 mm, Ø 35 mm, optional illuminative, Black, short, Black, Aluminium, anodised, Rest - Momentary

**max. number of switching elements:** 3

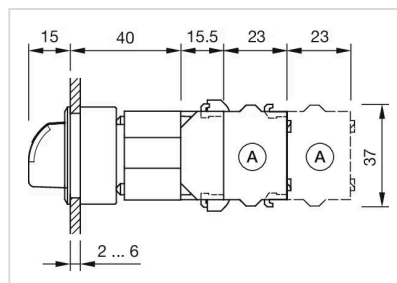
**Hints:** Max. 3 switching elements can be clipped on

**Mounting cut-outs:**



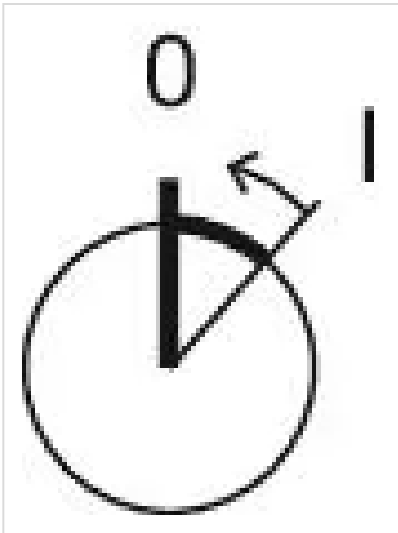
A = Screw terminal  
B = Push-in terminal (PIT)  
C = Plug-in terminal 6.3 mm x 0.8 mm  
D = Double plug-in terminal 6.3 mm x 0.8 mm

**Dimension drawings:**



X = Screw terminal

**Switching positions:**



Wiring diagrams:

