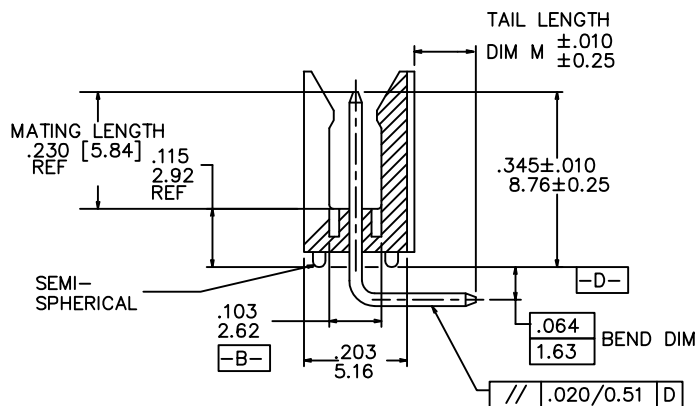
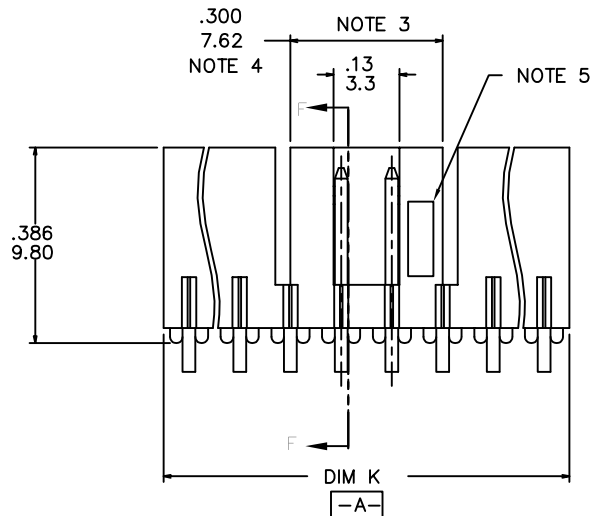
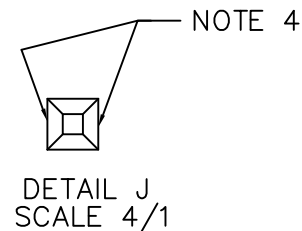
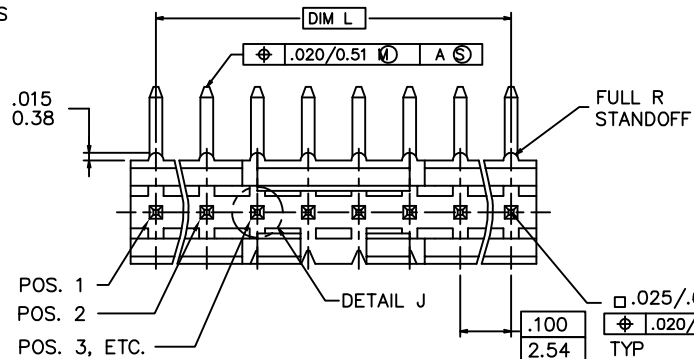


PRODUCT NO.
78208-XXXHLF

LEAD FREE OPTION
NOTE 6, 7 & 8
NO. OF POSITIONS
SEE TABLE
PIN PLATING
BASE P/N



mat'l. code				surface	tolerance	projection	product family		
				ISO 1302	ISO 406 ISO 1101		HEADER		
ltr	ecn	no	dr	date	tolerances unless otherwise specified		title		
L	ELX-N-011912	JZ		05/31/12	angles	linear	FRICITION LATCH HEADER		
M	ELX-N-21463	MZ		07/22/15	0°±2'	linear	SINGLE ROW, R/A		
							scale 3:1		
G	M05-0134	ERE	06/15/05	dr	M.CLOUSER	11/26/90	dwg no		
H	M06-0256	MHT	9/07/06	enr	C.TREXLER	11/26/90	sheet 1 of 3		
J	M08-0023	MHT	1/28/08	chr	C.TREXLER	11/26/90	size		
K	M08-0291	MHT	10/08/08	app	C.TREXLER	11/26/90	A3		
sheet				revision	M	M	type		
index				sheet	1	2	Product Customer Drawing		

PRODUCT NO.	NO.OF POS.	DIM K	DIM L	TAIL LENGTH DIM M
78208-X03	1 X 3	.300/7.62	.200/5.08	.120/3.05
-X04	1 X 4	.400/10.16	.300/7.62	
-X05	1 X 5	.500/12.70	.400/10.16	
-X06	1 X 6	.600/15.24	.500/12.70	
-X07	1 X 7	.700/17.78	.600/15.24	
-X08	1 X 8	.800/20.32	.700/17.78	
-X09	1 X 9	.900/22.86	.800/20.32	
-X10	1 X 10	1.000/25.40	.900/22.86	
-X11	1 X 11	1.100/27.94	1.000/25.40	
-X12	1 X 12	1.200/30.48	1.100/27.94	
-X13	1 X 13	1.300/33.02	1.200/30.48	
-X14	1 X 14	1.400/35.56	1.300/33.02	
78208-X15	1 X 15	1.500/38.10	1.400/35.56	.120/3.05
78208-X43	1 X 3	.300/7.62	.200/5.08	.190/4.83

PIN PLATING CODES

-1YY	30u"/.76u (SEE NOTE 9) 50u"/1.27u Ni
-2YY	15u"/.38u (SEE NOTE 9) 50u"/1.27u Ni
-3YY	50u"/1.27u (SEE NOTE 9) 50u"/1.27u Ni
-4YY	100u"/2.54u MIN Sn 50u"/1.27u Ni (SEE NOTE 10)
-4YYHLF	
-5YY	15u"/.38u (SEE NOTE 9) 50u"/1.27u Ni
-6YY	30u"/.76u (SEE NOTE 9) 50u"/1.27u Ni
-7YY	30u"/.76u (SEE NOTE 9) OVER 50u"/1.27u Ni
-8YY	15u"/.38u (SEE NOTE 9) OVER 50u"/1.27u Ni

NOTES:

1. MOLDING MAT'L: GLASS REINFORCED PCT OR MINRAL FILLED LCP, COLOR: BLACK
FLAME RETARDANT PER UL-94V-0
MAXIMUM OPERATING TEMPERATURE 130° C.

2. PIN MATERIAL: 3/4 HD PHOS. BRZ.

3. NO SLOTS ON 1 X 5 POSITION OR SMALLER PRODUCT. THE CENTER KEY SLOT WILL BE ON ALL HEADERS REGARDLESS OF SIZE.

4. TWO NON-CRITICAL SIDES OF PIN TIP NOT PLATED, BOTH ENDS.

5. COMPANY LOGO MAY APPEAR IN THIS AREA.

6. ADD "HLF" SUFFIX AT THE END OF PART NUMBER FOR LEAD FREE OPTION, NOT AVAILABLE FOR -5YY, -5YYH, -6YY & -6YYH.

7. PART NUMBERS WITH "H" SUFFIX WILL WITHSTAND EXPOSURE TO 260°C PEAK TEMPERATURE FOR 20 SECONDS IN WAVE SOLDER, INFRA-RED OR VAPOR PHASE SOLDER PROCESS.

PART NUMBERS WITHOUT "H" SUFFIX WILL WITHSTAND EXPOSURE TO 260°C PEAK TEMPERATURE FOR WAVE SOLDER PROCESS.

8. THIS PRODUCT MEETS EUROPEAN UNION DIRECTIVES AND OTHER COUNTRY REGULATION AS DESCRIBED IN GS-22-008.

9. PLATING OPTIONS:

PERFORMANCE PLATING WILL BE EITHER GOLD OR GXT ON CONTACT OR TAIL, OPTIONALLY (78~295u"/2~7.5u) TIN ON TAIL.

10. "THIS PRODUCT HAS 100% TIN PLATING IN THE INTERFACE AND HAS NOT BEEN TESTED FOR WHISKER GROWTH IN ALL INTERCONNECT ENVIRONMENTS."

mat'l. code				surface ISO 1302 ✓	tolerance ISO 406 ISO 1101	projection ⊕	product family HEADER
ltr	ecn	no	dr	date	tolerances unless otherwise specified	INCH/MM	title
M					angles linear		FRICION LATCH HEADER SINGLE ROW, R/A
					0±2°	scale 3:1	
					dr M.CLOUSER 11/26/90	FCI	dwg no
					enr C.TREXLER 11/26/90		sheet2 of 3
					chr C.TREXLER 11/26/90		size
					appd C.TREXLER 11/26/90		A3
sheet index	revision sheet						type Product Customer Drawing

1

2

3

4

5

6

PRODUCT NO.	NO.OF POS.	DIM K	DIM L	TAIL LENGTH DIM M	POLARIZATION PIN POSITION
78208-X77	1 X 10	1.000/25.40	.900/22.86	.120/3.05	2/3/5/6/8/9
78208-X78	1 X 4	1.000/25.40	.900/22.86	.120/3.05	2/3

A

B

C

D

FCI

FCIconnect.com

Copyright FCI

mat'l. code				surface		tolerance		projection		product family	
				ISO 1302		ISO 406 ISO 1101				HEADER	
ltr	ecn	no	dr	date		tolerances unless otherwise specified				title	
M						angles	linear		INCH/MM	FRICTION LATCH HEADER	
										SINGLE ROW, R/A	
						0±2°			scale 3:1		
						dr	M.CLOUSER	11/26/90		dwg no	sheet3 of 3
						enr	C.TREXLER	11/26/90		78208	size
						chr	C.TREXLER	11/26/90		A3	
						appd	C.TREXLER	11/26/90		type	Product Customer Drawing
sheet index	revision sheet										

1

2

3

4

5

6

form: A3

1

2

3

4

5

6

Mouser Electronics

Authorized Distributor

Click to View Pricing, Inventory, Delivery & Lifecycle Information:

FCI / Amphenol:

[78208-111](#) [78208-113](#) [78208-114](#) [78208-115](#) [78208-143](#) [78208-203](#) [78208-205](#) [78208-206](#) [78208-208](#) [78208-210](#) [78208-214](#) [78208-304](#) [78208-305](#) [78208-314](#) [78208-403](#) [78208-404](#) [78208-405](#) [78208-407](#) [78208-408](#) [78208-409](#) [78208-410](#) [78208-414](#) [78208-503](#) [78208-504](#) [78208-505](#) [78208-506](#) [78208-508](#) [78208-604](#) [78208-103](#)
[78208-143HLF](#) [78208-314HLF](#) [78208-606](#)