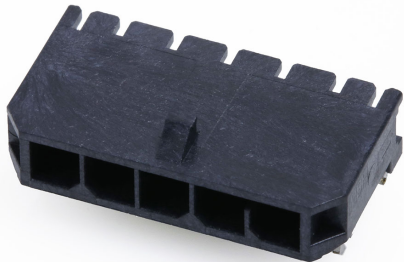




**Part Number :** [2189890410](#)  
**Product Description :** Micro-Fit+ Right-Angle Header, Surface Mount, 3.00mm Pitch, Single Row, 4 Circuits, Matte Tin (Sn) Plating, Glow-Wire Capable, Press Clip, Black  
**Series Number :** 218989  
**Status :** Active  
**Product Category :** PCB Headers and Receptacles



Documents & Resources

**Drawings**  
[Drawing 2189890410\\_sd.pdf](#)  
[Packaging Design Drawing 2189890001-PK-000.pdf](#)

**3D Models and Design Files**  
[3D Model 2189890410\\_stp.zip](#)

**Specifications**  
[Application Specification 2064600001-AS-000.pdf](#)  
[Product Specification 2064600000-PS-000.pdf](#)  
[Test Summary 2064600000-TS-000.pdf](#)  
[Test Summary 2064600001-TS-000.pdf](#)

Product Environment Compliance

Compliance

GADSL/IMDS	Compliant with Exemption 44; 33
China RoHS	
EU ELV	Not Relevant
Low-Halogen Status	Low-Halogen per IEC 61249-2-21
REACH SVHC	Not Contained per D(2024)4144-DC (27 June 2024)
EU RoHS	Compliant per EU 2015/863

Multiple Part Product Compliance Statements  
- Eu RoHS  
- REACH SVHC  
- Low-Halogen

## Multiple Part Industry Compliance Documents

- IPC 1752A Class C
- IPC 1752A Class D
- Molex Product Compliance Declaration
- IEC-62474
- chemSHERPA (xml)

## EU RoHS Certificate of Compliance

---

### Part Details

#### General

Status	Active
Category	PCB Headers and Receptacles
Series	218989
Description	Micro-Fit+ Right-Angle Header, Surface Mount, 3.00mm Pitch, Single Row, 4 Circuits, Matte Tin (Sn) Plating, Glow-Wire Capable, Press Clip, Black
Application	Power, Wire-to-Board
Component Type	PCB Header
Product Family	Micro-Fit+ Connector System
Product Name	Micro-Fit+
UPC	196823178184

#### Electrical

Current - Maximum per Contact	13.0A
Voltage - Maximum	600V AC (RMS)/DC

#### Physical

Breakaway	No
Circuits (Loaded)	4
Circuits (maximum)	4
Color - Resin	Black
Durability (mating cycles max)	25
First Mate / Last Break	No
Glow-Wire Capable	Yes
Keying to Mating Part	None

Lock to Mating Part	Yes
Material - Metal	High Copper Alloy
Material - Plating Mating	Matte Tin
Material - Plating Termination	Matte Tin
Material - Resin	Liquid Crystal Polymer
Net Weight	0.818/g
Number of Rows	1
Orientation	Right Angle
Packaging Type	Embossed Tape on Reel
PCB Retention	Yes
Pitch - Mating Interface	3.00mm
Pitch - Termination Interface	3.00mm
Polarized to Mating Part	Yes
Polarized to PCB	Yes
Shrouded	Yes
Temperature Range - Operating	-40° to +125°C
Termination Interface Style	Surface Mount

---

## Mates With / Use With

### Mates with Part(s)

Description	Part Number
Micro-Fit+ Single Row Receptacle Housings	<u>215759</u>