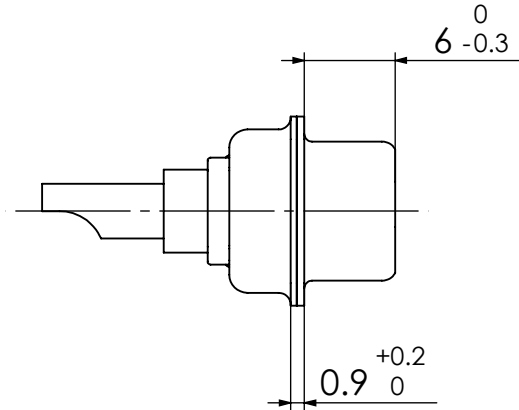
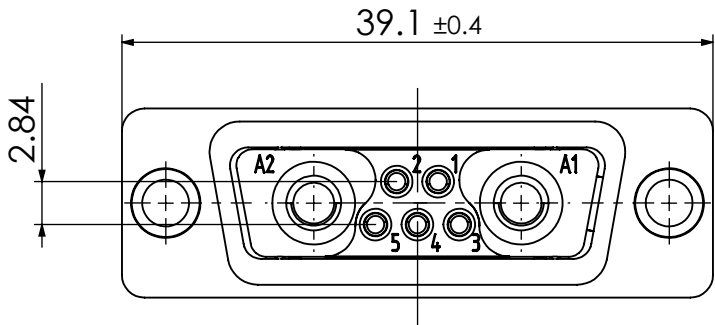
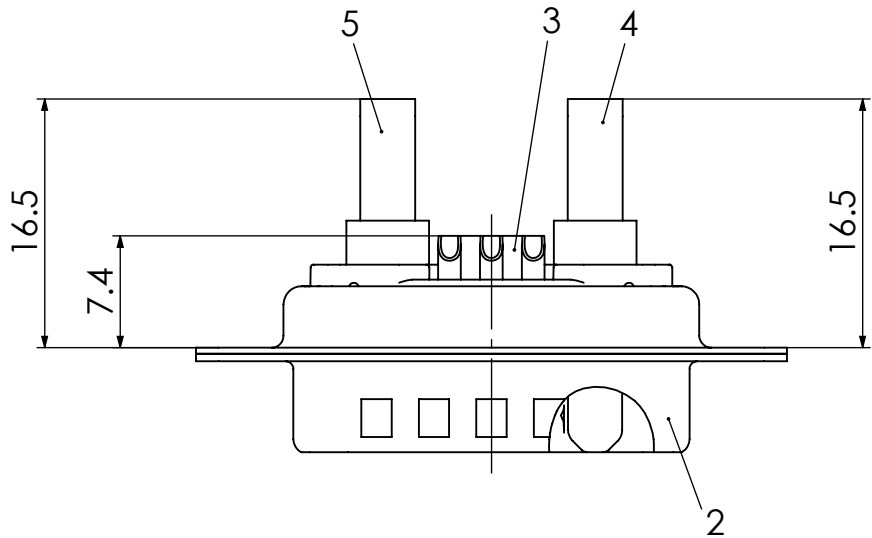
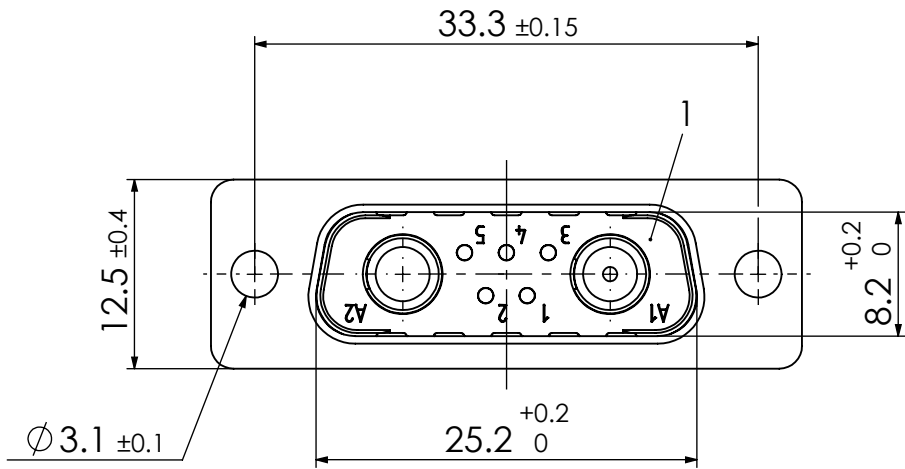
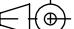


COMMENT:
ALL RIGHTS ARE RESERVED BY US FOR THIS DRAWING. WITHOUT OUR PRIOR CONSENT,
IT MAY NEITHER BE DUPLICATED NOR MADE AVAILABLE TO A THIRD PARTY.
AND IT ALSO MAY NOT BE IMPROPERLY USED BY THE RECEIVER, OR A THIRD PARTY.



RoHS compliant
by exemption

5	1	High power contact	FMP006P103	20A / AWG 12-16
4	1	High power contact	FMP028P103	20A / AWG 12-16
3	5	Signal contact	P0 / Brass	0.8µm Au / AWG 20
2	1	Shell	Steel	tin plated
1	1	Insulator	PBT (-55°C to +130°C) acc. UL94V-0	green
No.	St.	Part	Type Description/Material	Surface plating/Colour/Class

FUNCTIONAL SYMBOLS <div>▽ = 0</div> <div>▽ = 0</div> <div>▽ = 0</div>	THIS DRAWING CONTAINS INFORMATION THAT IS PROPRIETARY TO MOLEX ELECTRONIC TECHNOLOGIES, LLC AND SHOULD NOT BE USED WITHOUT WRITTEN PERMISSION											
	DIMENSION UNITS mm		SCALE 2:1		MEASUREMENTS WITHOUT TOLERANCE ACC. TO ISO 2768-m			molex				
					CURRENT REVISION			FCT D-Sub Mixed-Layout Connector				
					DRWN: DRAWN BY msteinbrueck 13-09-2023							
					APPR: APPR BY mteubel 15-09-2023							
2		24410		INITIAL REVISION			PRODUCT CUSTOMER DRAWING					
1				DRWN: DRAWN BY Denzinger 10-02-2004			MATERIAL NUMBER			REVISION		
REV.		CH.-NO.		APPR: APPR BY aschiekofer 10-02-2004			1731070541			2		
REPLACEMENT FOR: 1731070541_Rev. A1				FRIST ANGLE PROJECTION 		DRAWING A3-SIZE		DOCUMENT NUMBER FM7W2P-0585		CUSTOMER GENERAL MARKET		SHEET NUMBER 1 OF 1