

2908891

<https://www.phoenixcontact.com/us/products/2908891>

Please be informed that the data shown in this PDF document is generated from our online catalog. Please find the complete data in the user documentation. Our general terms of use for downloads are valid.



Migration board for converting TDC3000 to modern control platforms, digital output, 16 channel with relays

Your advantages

- Panel mount to existing TDC3000 chassis
- Compatible with existing pluggable field wiring connectors
- DSUB control side connection
- Terminal blocks for power supply
- Per channel fusing

Commercial data

| | |
|--------------------------------------|---------------|
| Item number | 2908891 |
| Packing unit | 1 pc |
| Minimum order quantity | 1 pc |
| Sales key | C421 |
| Product key | CK2B9H |
| GTIN | 4055626733081 |
| Weight per piece (including packing) | 840 g |
| Weight per piece (excluding packing) | 800 g |
| Customs tariff number | 85371098 |
| Country of origin | US |

Technical data

Product properties

| | |
|-------------------------|---------------------------|
| Product type | Interface module |
| Mechanical service life | 3x 10 ⁷ cycles |

Data management status

| | |
|------------------|----|
| Article revision | 01 |
|------------------|----|

Insulation characteristics

| | |
|----------------------|----|
| Overvoltage category | II |
| Pollution degree | 2 |

Electrical properties

Supported controller HONEYWELL TDC3000

| | |
|-------------------|--------|
| Suitable I/O card | TDOR12 |
|-------------------|--------|

Input data

| | |
|---|--|
| Nominal input voltage U_N | 24 V DC |
| Input voltage range in reference to U_N | 0.8 ... 1.1 |
| Input voltage range | 19.2 V DC ... 26.4 V DC |
| Typical input current at U_N | 20 mA |
| Typical response time | 8 ms |
| Typical release time | 10 ms |
| Protective circuit | Freewheeling diode; Freewheeling diode |

Output data

Switching

| | |
|--|----------------------|
| Contact switching type | 1 changeover contact |
| Contact material | AgNi |
| Maximum switching voltage | 125 V AC/DC |
| Minimum switching voltage | 12 V |
| Limiting continuous current | 5 A (fuse limited) |
| Min. switching current | 10 mA (at 12 V) |
| Interrupting rating (ohmic load) max. | 120 W (at 24 V DC) |
| | 58 W (at 48 V DC) |
| | 48 W (at 60 V DC) |
| | 50 W (110 V DC) |
| | 600 VA (120 V AC) |
| Error detection (line break / short-circuit) | no |

Connection data

Controller level

FLX-D37F/16RSC/24DC/DO/TDC3K - Active module



2908891

<https://www.phoenixcontact.com/us/products/2908891>

| | |
|-----------------------|---------------------------|
| Connection method | D-SUB 37 female connector |
| Number of connections | 1 |
| Number of positions | 37 |

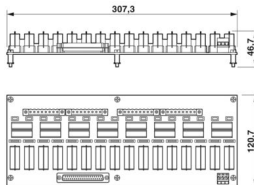
Field level

| | |
|-------------------|-----------|
| Connection method | pluggable |
|-------------------|-----------|

Signaling

| | |
|------------------------|-----|
| Status display present | Yes |
|------------------------|-----|

Dimensions

| | |
|---------------------|--|
| Dimensional drawing |  |
| Width | 307.3 mm |
| Height | 120.7 mm |
| Depth | 46.7 mm |

Environmental and real-life conditions

Ambient conditions

| | |
|---|------------------|
| Ambient temperature (operation) | -40 °C ... 70 °C |
| Ambient temperature (storage/transport) | -40 °C ... 75 °C |
| Altitude | < 2000 m |
| Permissible humidity (operation) | < 90 % |

Mounting

| | |
|-------------------|-----------------|
| Mounting type | TDC3000 chassis |
| Mounting position | any |

Notes

| | |
|--------------------|--|
| Notes on operation | For proper use, the specifications of the installation directive (see Downloads) must be observed. For applications or use with third-party products, the specifications, and the safety and warning instructions of the respective third-party manufacturer must also be met. |
|--------------------|--|

FLX-D37F/16RSC/24DC/DO/TDC3K - Active module

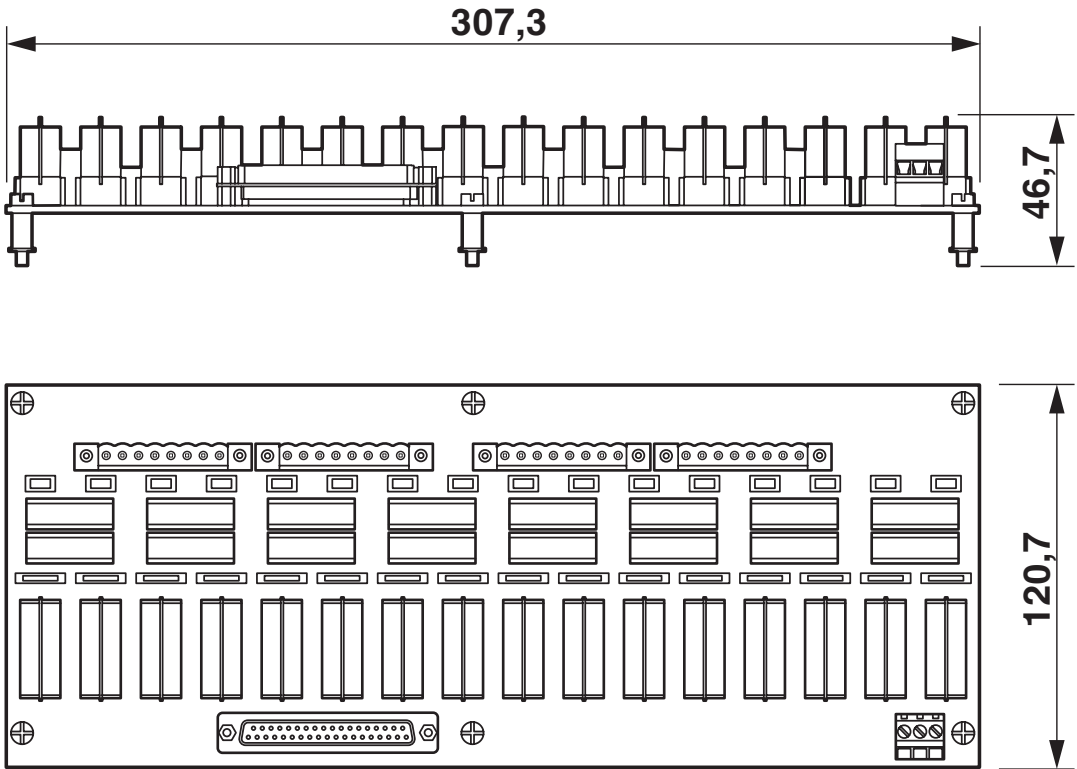


2908891

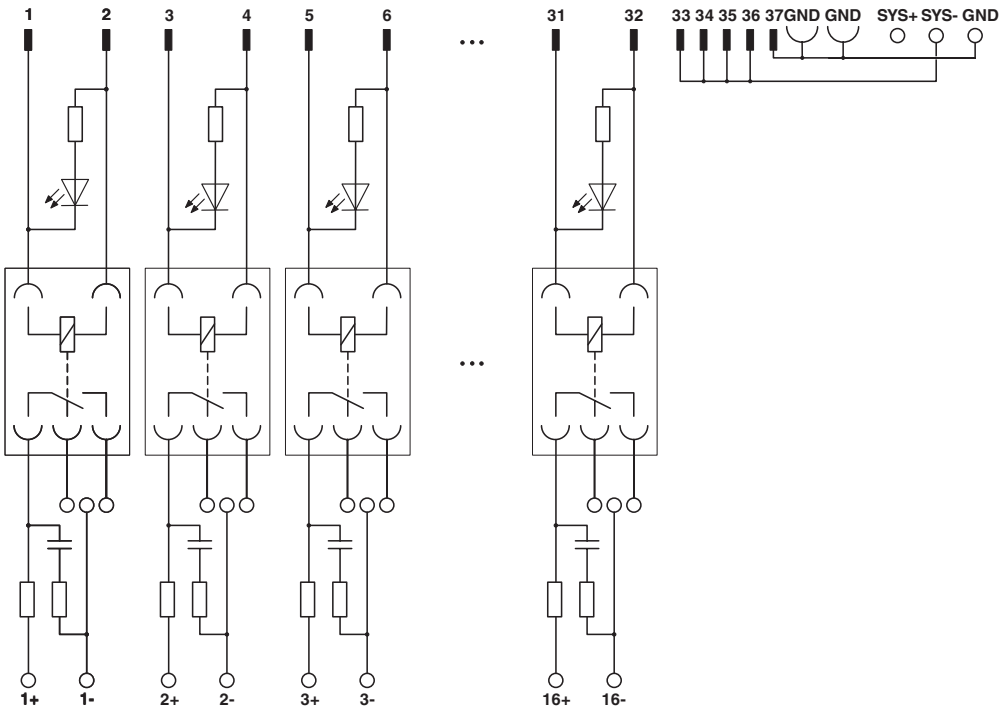
<https://www.phoenixcontact.com/us/products/2908891>

Drawings

Dimensional drawing



Circuit diagram



FLX-D37F/16RSC/24DC/DO/TDC3K - Active module



2908891

<https://www.phoenixcontact.com/us/products/2908891>

Approvals

To download certificates, visit the product detail page: <https://www.phoenixcontact.com/us/products/2908891>

| CSA Approval ID: 108860_0_000 | | | | |
|----------------------------------|-----------------------|-----------------------|-------------------|-----------------------------|
| | Nominal voltage U_N | Nominal current I_N | Cross section AWG | Cross section mm^2 |
| Output | - | 5 A | - | - |
| Input | - | 0.02 A | - | - |

| cUL Recognized Approval ID: FILE E 238705 | | | | |
|--|-----------------------|-----------------------|-------------------|-----------------------------|
| | Nominal voltage U_N | Nominal current I_N | Cross section AWG | Cross section mm^2 |
| Output | - | 5 A | - | - |
| Input | - | 0.02 A | - | - |

| UL Recognized Approval ID: FILE E 238705 | | | | |
|---|-----------------------|-----------------------|-------------------|-----------------------------|
| | Nominal voltage U_N | Nominal current I_N | Cross section AWG | Cross section mm^2 |
| Output | - | 5 A | - | - |
| Input | - | 0.02 A | - | - |

| CSAus Approval ID: 108860_0_000 | | | | |
|------------------------------------|-----------------------|-----------------------|-------------------|-----------------------------|
| | Nominal voltage U_N | Nominal current I_N | Cross section AWG | Cross section mm^2 |
| Output | - | 5 A | - | - |
| Input | - | 0.02 A | - | - |

| |
|------------------|
| cULus Recognized |
|------------------|

| |
|--------|
| cCSAus |
|--------|

Classifications

ECLASS

| | |
|-------------|----------|
| ECLASS-11.0 | 27141152 |
| ECLASS-12.0 | 27141152 |
| ECLASS-13.0 | 27141152 |

ETIM

| | |
|----------|----------|
| ETIM 9.0 | EC002780 |
|----------|----------|

UNSPSC

| | |
|-------------|----------|
| UNSPSC 21.0 | 39121400 |
|-------------|----------|

Environmental product compliance

| | |
|---|---|
| EU RoHS | |
| Fulfills EU RoHS substance requirements | Yes |
| Exemption | 6(c), 7(a), 7(c)-I |
| China RoHS | |
| Environment friendly use period (EFUP) | EFUP-50 |
| | An article-related China RoHS declaration table can be found in the download area for the respective article under "Manufacturer declaration". For all articles with EFUP-E, no China RoHS declaration table issued and required. |
| EU REACH SVHC | |
| REACH candidate substance (CAS No.) | Lead(CAS: 7439-92-1) |
| SCIP | ff3e4447-5007-41cc-bd5f-26e0f2307dbe |

FLX-D37F/16RSC/24DC/DO/TDC3K - Active module



2908891

<https://www.phoenixcontact.com/us/products/2908891>

Accessories

CAB-DSUB37M/OE/22/S/ 1M - Cable

2909622

<https://www.phoenixcontact.com/us/products/2909622>



Assembled shielded round cable; connection 1: Single wires (37-position) (The wires are marked and fitted with ferrules); connection 2: D-SUB pin strip (1x 37-position); cable length: 1 m

CAB-DSUB37M/OE/22/S/ 3M - Cable

2909623

<https://www.phoenixcontact.com/us/products/2909623>



Assembled shielded round cable; connection 1: Single wires (37-position) (The wires are marked and fitted with ferrules); connection 2: D-SUB pin strip (1x 37-position); cable length: 3 m

FLX-D37F/16RSC/24DC/DO/TDC3K - Active module



2908891

<https://www.phoenixcontact.com/us/products/2908891>

CAB-DSUB37M/OE/22/S/ 5M - Cable

2909624

<https://www.phoenixcontact.com/us/products/2909624>



Assembled shielded round cable; connection 1: Single wires (37-position) (The wires are marked and fitted with ferrules); connection 2: D-SUB pin strip (1x 37-position); cable length: 5 m

CAB-DSUB37M/OE/22/S/10M - Cable

2909625

<https://www.phoenixcontact.com/us/products/2909625>



Assembled shielded round cable; connection 1: Single wires (37-position) (The wires are marked and fitted with ferrules); connection 2: D-SUB pin strip (1x 37-position); cable length: 10 m

FLX-D37F/16RSC/24DC/DO/TDC3K - Active module



2908891

<https://www.phoenixcontact.com/us/products/2908891>

CAB-DSUB37M/OE/22/S/15M - Cable

2909626

<https://www.phoenixcontact.com/us/products/2909626>



Assembled shielded round cable; connection 1: Single wires (37-position) (The wires are marked and fitted with ferrules); connection 2: D-SUB pin strip (1x 37-position); cable length: 15 m

CAB-DSUB37M/OE/22/S/30M - Cable

2909627

<https://www.phoenixcontact.com/us/products/2909627>



Assembled shielded round cable; connection 1: Single wires (37-position) (The wires are marked and fitted with ferrules); connection 2: D-SUB pin strip (1x 37-position); cable length: 30 m

FLX-D37F/16RSC/24DC/DO/TDC3K - Active module



2908891

<https://www.phoenixcontact.com/us/products/2908891>

CAB-DSUB37M/OE/22/TP/S/ 1M - Cable

2909723

<https://www.phoenixcontact.com/us/products/2909723>



Assembled shielded round cable; connection 1: Twisted pair (37-position) (The wires are marked and fitted with ferrules); connection 2: D-SUB pin strip (1x 37-position); cable length: 1 m

CAB-DSUB37M/OE/22/TP/S/ 3M - Cable

2909724

<https://www.phoenixcontact.com/us/products/2909724>



Assembled shielded round cable; connection 1: Twisted pair (37-position) (The wires are marked and fitted with ferrules); connection 2: D-SUB pin strip (1x 37-position); cable length: 3 m

FLX-D37F/16RSC/24DC/DO/TDC3K - Active module



2908891

<https://www.phoenixcontact.com/us/products/2908891>

CAB-DSUB37M/OE/22/TP/S/ 5M - Cable

2909725

<https://www.phoenixcontact.com/us/products/2909725>



Assembled shielded round cable; connection 1: Twisted pair (37-position) (The wires are marked and fitted with ferrules); connection 2: D-SUB pin strip (1x 37-position); cable length: 5 m

CAB-DSUB37M/OE/22/TP/S/10M - Cable

2909726

<https://www.phoenixcontact.com/us/products/2909726>



Assembled shielded round cable; connection 1: Twisted pair (37-position) (The wires are marked and fitted with ferrules); connection 2: D-SUB pin strip (1x 37-position); cable length: 10 m

FLX-D37F/16RSC/24DC/DO/TDC3K - Active module



2908891

<https://www.phoenixcontact.com/us/products/2908891>

CAB-DSUB37M/OE/22/TP/S/15M - Cable

2909728

<https://www.phoenixcontact.com/us/products/2909728>



Assembled shielded round cable; connection 1: Twisted pair (37-position) (The wires are marked and fitted with ferrules); connection 2: D-SUB pin strip (1x 37-position); cable length: 15 m

CAB-DSUB37M/OE/22/TP/S/30M - Cable

2909729

<https://www.phoenixcontact.com/us/products/2909729>



Assembled shielded round cable; connection 1: Twisted pair (37-position) (The wires are marked and fitted with ferrules); connection 2: D-SUB pin strip (1x 37-position); cable length: 30 m

FLX-D37F/16RSC/24DC/DO/TDC3K - Active module



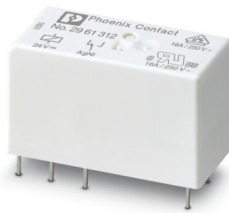
2908891

<https://www.phoenixcontact.com/us/products/2908891>

REL-MR- 24DC/21HC - Single relay

2961312

<https://www.phoenixcontact.com/us/products/2961312>



Plug-in miniature power relay, with power contact for high continuous currents, 1 changeover contact, input voltage 24 V DC

Phoenix Contact 2024 © - all rights reserved

<https://www.phoenixcontact.com>

Phoenix Contact USA
586 Fulling Mill Road
Middletown, PA 17057, United States
(+717) 944-1300
info@phoenixcon.com