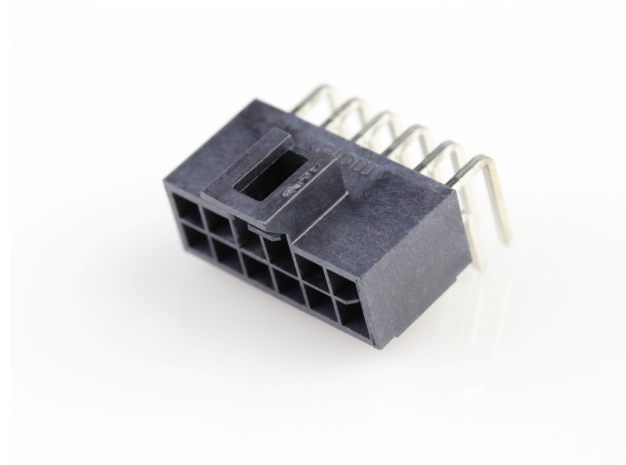




**Part Number :** [1053141512](#)  
**Product Description :** Nano-Fit Right-Angle Header, Through Hole, 2.50mm Pitch, Dual Row, 12 Circuits, Tin (Sn) Plating, Black, Glow-Wire Capable, Tape and Reel  
**Series Number :** 105314  
**Status :** Active  
**Product Category :** PCB Headers and Receptacles  
**Packaging Alternative :** [1053141112 \(Tray\)](#)



Documents & Resources

Drawings

[Drawing 1053141512\\_sd.pdf](#)  
[Packaging Design Drawing 1053141000-PK-000.pdf](#)

3D Models and Design Files


[3D Model 1053141512\\_stp.zip](#)

Specifications

[Product Specification 1053001000-PS-CH-000.pdf](#)  
[Product Specification 1053001000-PS-ES-000.pdf](#)  
[Product Specification 1053001000-PS-JP-000.pdf](#)  
[Product Specification 1053001000-PS-SK-000.pdf](#)  
[Product Specification PS-105300-100-001.pdf](#)

Product Environment Compliance

Compliance

GADSL/IMDS	Compliant with Exemption 44; 33
China RoHS	
EU ELV	Not Relevant
Low-Halogen Status	Low-Halogen per IEC 61249-2-21
REACH SVHC	Not Contained per D(2024)4144-DC (27 June 2024)
EU RoHS	Compliant per EU 2015/863

[Multiple Part Product Compliance Statements](#)

- Eu RoHS
- REACH SVHC
- Low-Halogen

#### Multiple Part Industry Compliance Documents

- IPC 1752A Class C
- IPC 1752A Class D
- Molex Product Compliance Declaration
- IEC-62474
- chemSHERPA (xml)

#### EU RoHS Certificate of Compliance

---

## Part Details

### General

Status	Active
Category	PCB Headers and Receptacles
Series	105314
Description	Nano-Fit Right-Angle Header, Through Hole, 2.50mm Pitch, Dual Row, 12 Circuits, Tin (Sn) Plating, Black, Glow-Wire Capable, Tape and Reel
Application	Power, Wire-to-Board
Component Type	PCB Header
Product Family	Nano-Fit Power Connectors
Product Name	Nano-Fit
UPC	193264518067

### Agency

UL	E29179
----	--------

### Electrical

Current - Maximum per Contact	7.5A
Voltage - Maximum	250V AC (RMS)/DC

### Physical

Breakaway	No
Circuits (Loaded)	12

Circuits (maximum)	12
Color - Resin	Black
Durability (mating cycles max)	25
Glow-Wire Capable	Yes
Guide to Mating Part	No
Keying to Mating Part	Yes
Lock to Mating Part	Yes
Material - Metal	Brass
Material - Plating Mating	Tin
Material - Plating Termination	Tin
Material - Resin	Liquid Crystal Polymer
Net Weight	1.296/g
Number of Rows	2
Orientation	Right Angle
Packaging Type	Embossed Tape on Reel
PC Tail Length	3.20mm
PCB Locator	Yes
PCB Retention	Yes
PCB Thickness - Recommended	1.60mm, 2.40mm
Pitch - Mating Interface	2.50mm
Pitch - Termination Interface	2.50mm
Plating min - Mating	1.524µm
Plating min - Termination	1.524µm
Polarized to Mating Part	Yes
Polarized to PCB	Yes
Shrouded	Yes
Stackable	No
Temperature Range - Operating	-40° to +105°C
Termination Interface Style	Through Hole

---

## Mates With / Use With

### Mates with Part(s)

Description	Part Number
-------------	-------------

Nano-Fit Receptacle Housing, TPA Capable, 2.50mm Pitch, Dual Row, 12 Circuits, Black, Glow-Wire Capable	<u>1053081212</u>
--	-------------------