

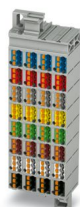
PTMC 1,5/32-3 VDE0815 19Z - Marshalling patchboard



3270394

<https://www.phoenixcontact.com/us/products/3270394>

Please be informed that the data shown in this PDF document is generated from our online catalog. Please find the complete data in the user documentation. Our general terms of use for downloads are valid.



Marshalling patchboard, Labeled from 1 - 32, nom. voltage: 500 V, nominal current: 17.5 A, connection method: Push-in connection, cross section: 0.14 mm² - 2.5 mm², mounting: Wall mounting, 19" rack, color: gray

Your advantages

- Clear representation of actuation and terminal points through vertical conductor routing
- Tool-free wiring in a confined space thanks to compact size
- Color configuration according to VDE 0815
- High contact quality thanks to push-in technology as a replacement for Wire-Wrap®, TERMI-POINT®, etc.
- For mounting in 19" racks

Commercial data

Item number	3270394
Packing unit	18 pc
Minimum order quantity	1 pc
Product key	BE6212
Catalog page	Page 63 (C-1-2019)
GTIN	4055626248844
Weight per piece (including packing)	147.16 g
Weight per piece (excluding packing)	99.99 g
Country of origin	PL

PTMC 1,5/32-3 VDE0815 19Z - Marshalling patchboard



3270394

<https://www.phoenixcontact.com/us/products/3270394>

Technical data

Notes

General	Labeled from 1 - 32
---------	---------------------

Product properties

Product type	Marshalling terminal
Number of positions	32
Number of connections	192
Number of rows	1

Insulation characteristics

Overvoltage category	III
Degree of pollution	3

Electrical properties

Rated surge voltage	6 kV
Maximum power dissipation for nominal condition	0.56 W

Connection data

Number of connections per level	192
Nominal cross section	1.5 mm ²
Rated cross section AWG	14
Stripping length	8 mm ... 10 mm
Internal cylindrical gage	A1
Connection in acc. with standard	IEC 60947-7-1
Conductor cross section rigid	0.14 mm ² ... 2.5 mm ²
Cross section AWG	26 ... 14 (converted acc. to IEC)
Conductor cross section flexible	0.14 mm ² ... 1.5 mm ²
Conductor cross section, flexible [AWG]	26 ... 16 (converted acc. to IEC)
Conductor cross-section flexible (ferrule without plastic sleeve)	0.14 mm ² ... 1.5 mm ²
Flexible conductor cross section (ferrule with plastic sleeve)	0.14 mm ² ... 1.5 mm ²
Nominal current	17.5 A
Maximum load current	24 A (in case of a 2.5 mm ² conductor cross section, the maximum load current must not be exceeded by the total current of all connected conductors.) 12 A (in case of a 2.5 mm ² conductor cross section, the maximum load current must not be exceeded by the total current of all connected conductors.)
Nominal voltage	500 V

Connection cross sections directly pluggable

Conductor cross section rigid	0.34 mm ² ... 2.5 mm ²
Conductor cross section, rigid [AWG]	20 ... 14 (converted acc. to IEC)
Conductor cross-section flexible (ferrule without plastic sleeve)	0.34 mm ² ... 1.5 mm ²
Flexible conductor cross section (ferrule with plastic sleeve)	0.34 mm ² ... 1.5 mm ²

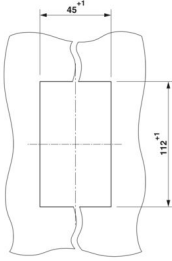
PTMC 1,5/32-3 VDE0815 19Z - Marshalling patchboard



3270394

<https://www.phoenixcontact.com/us/products/3270394>

Dimensions

Dimensional drawing	
Width	44 mm
Height	111 mm
Depth	30 mm

Material specifications

Color	gray
Flammability rating according to UL 94	V0
Insulating material group	I
Insulating material	PA
Static insulating material application in cold	-60 °C
Temperature index of insulation material (DIN EN 60216-1 (VDE 0304-21))	125 °C
Relative insulation material temperature index (Elec., UL 746 B)	130 °C
Fire protection for rail vehicles (DIN EN 45545-2) R22	HL 1 - HL 3
Fire protection for rail vehicles (DIN EN 45545-2) R23	HL 1 - HL 3
Fire protection for rail vehicles (DIN EN 45545-2) R24	HL 1 - HL 3
Fire protection for rail vehicles (DIN EN 45545-2) R26	HL 1 - HL 3
Calorimetric heat release NFPA 130 (ASTM E 1354)	27,5 MJ/kg
Surface flammability NFPA 130 (ASTM E 162)	passed
Specific optical density of smoke NFPA 130 (ASTM E 662)	passed
Smoke gas toxicity NFPA 130 (SMP 800C)	passed

Electrical tests

Surge voltage test

Test voltage setpoint	7.3 kV
Result	Test passed

Temperature-rise test

Requirement temperature-rise test	Increase in temperature ≤ 45 K
Result	Test passed
Short-time withstand current 1.5 mm ²	0.18 kA
Short-time withstand current 2.5 mm ²	0.3 kA
Result	Test passed

Power-frequency withstand voltage

PTMC 1,5/32-3 VDE0815 19Z - Marshalling patchboard



3270394

<https://www.phoenixcontact.com/us/products/3270394>

Test voltage setpoint	1.89 kV
Result	Test passed

Mechanical properties

Mechanical data

Open side panel	No
-----------------	----

Mechanical tests

Mechanical strength

Result	Test passed
--------	-------------

Attachment on the carrier

DIN rail/fixing support	NS 35
Test force setpoint	1 N
Result	Test passed

Test for conductor damage and slackening

Rotation speed	10 rpm
Revolutions	135
Conductor cross section/weight	0.14 mm ² / 0.2 kg
	1.5 mm ² / 0.4 kg
	2.5 mm ² / 0.7 kg
Result	Test passed

Environmental and real-life conditions

Aging

Temperature cycles	192
Result	Test passed

Needle-flame test

Time of exposure	30 s
Result	Test passed

Oscillation/broadband noise

Specification	DIN EN 50155 (VDE 0115-200):2008-03
Spectrum	Service life test category 1, class B, body mounted
Frequency	$f_1 = 5 \text{ Hz}$ to $f_2 = 150 \text{ Hz}$
ASD level	0.964 (m/s ²)/Hz
Acceleration	0.58g
Test duration per axis	5 h
Test directions	X-, Y- and Z-axis
Result	Test passed

Shocks

Specification	DIN EN 50155 (VDE 0115-200):2008-03
---------------	-------------------------------------

PTMC 1,5/32-3 VDE0815 19Z - Marshalling patchboard



3270394

<https://www.phoenixcontact.com/us/products/3270394>

Pulse shape	Half-sine
Acceleration	5g
Shock duration	30 ms
Number of shocks per direction	3
Test directions	X-, Y- and Z-axis (pos. and neg.)
Result	Test passed

Ambient conditions

Ambient temperature (operation)	-60 °C ... 105 °C (max. short-term operating temperature RTI Elec.)
Ambient temperature (storage/transport)	-25 °C ... 60 °C (for a short time, not exceeding 24 h, -60 °C to +70 °C)
Ambient temperature (assembly)	-5 °C ... 70 °C
Ambient temperature (actuation)	-5 °C ... 70 °C ()
Permissible humidity (storage/transport)	30 % ... 70 %

Standards and regulations

Connection in acc. with standard	IEC 60947-7-1
----------------------------------	---------------

Mounting

Mounting type	Wall mounting
	19" rack

PTMC 1,5/32-3 VDE0815 19Z - Marshalling patchboard

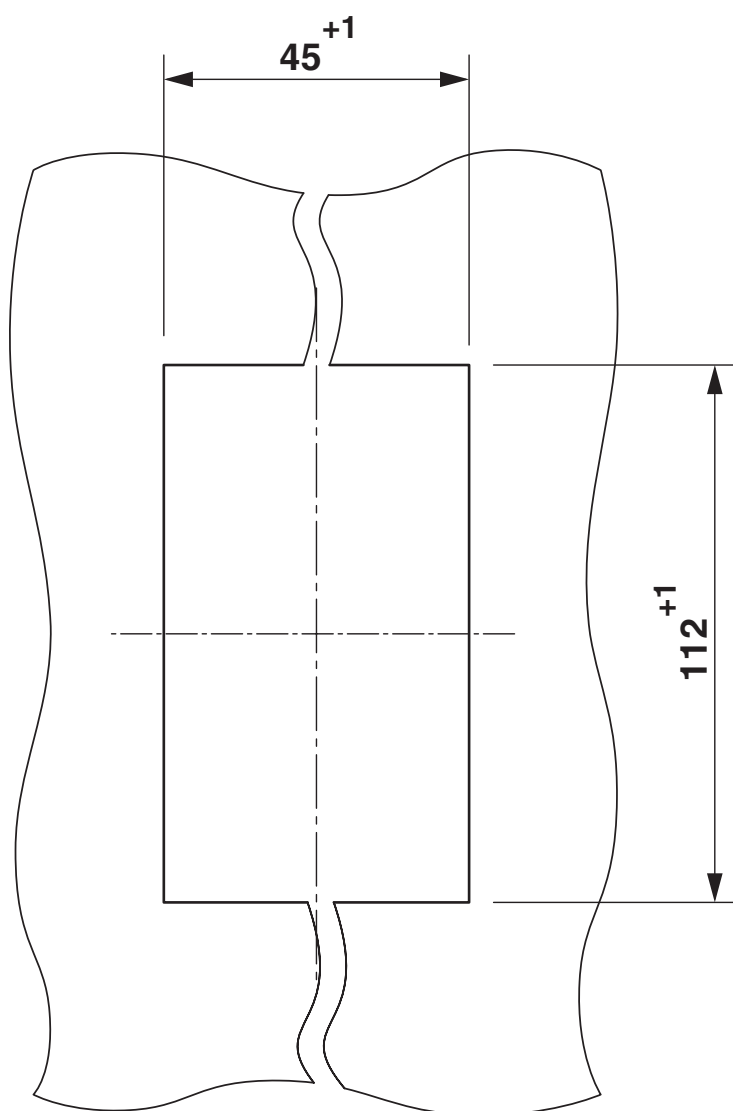


3270394

<https://www.phoenixcontact.com/us/products/3270394>

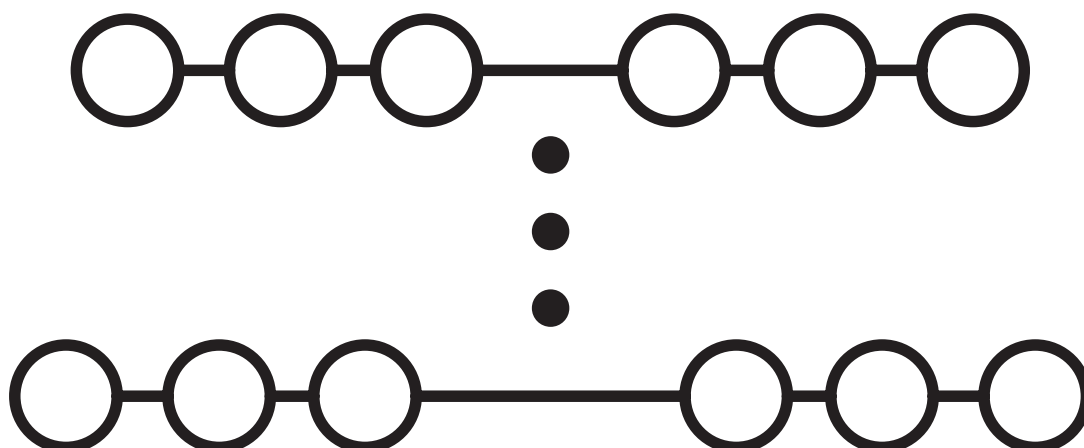
Drawings

Dimensional drawing



Panel cutout

Circuit diagram

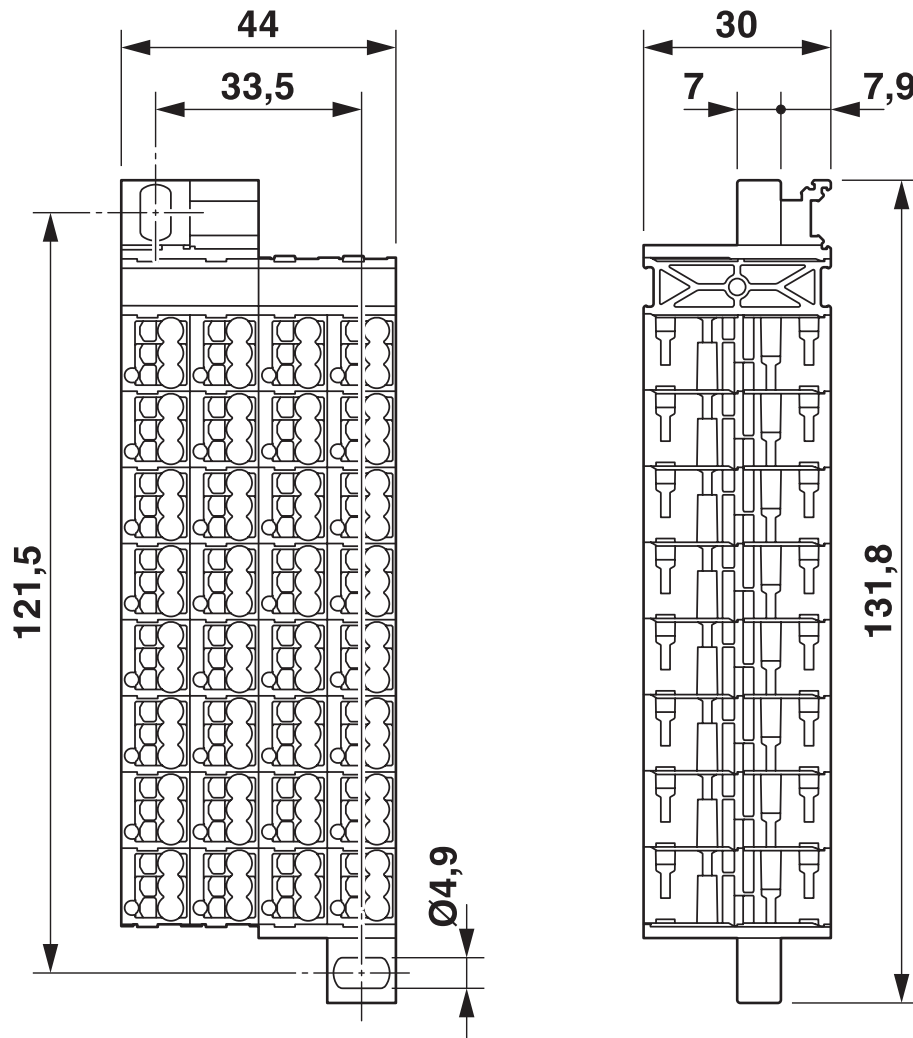


PTMC 1,5/32-3 VDE0815 19Z - Marshalling patchboard

3270394

<https://www.phoenixcontact.com/us/products/3270394>

Dimensional drawing



PTMC 1,5/32-3 VDE0815 19Z - Marshalling patchboard



3270394

<https://www.phoenixcontact.com/us/products/3270394>

Approvals

🔗 To download certificates, visit the product detail page: <https://www.phoenixcontact.com/us/products/3270394>



EAC

Approval ID: RU C-DE.BL08.B.00682

PTMC 1,5/32-3 VDE0815 19Z - Marshalling patchboard



3270394
<https://www.phoenixcontact.com/us/products/3270394>

Classifications

ECLASS

ECLASS-11.0	27141120
ECLASS-13.0	27250106

ETIM

ETIM 9.0	EC000897
----------	----------

UNSPSC

UNSPSC 21.0	39121400
-------------	----------

PTMC 1,5/32-3 VDE0815 19Z - Marshalling patchboard



3270394
<https://www.phoenixcontact.com/us/products/3270394>

Environmental product compliance

EU RoHS	
Fulfills EU RoHS substance requirements	Yes, No exemptions
China RoHS	
Environment friendly use period (EFUP)	EFUP-E
	No hazardous substances above the limits
EU REACH SVHC	
REACH candidate substance (CAS No.)	No substance above 0.1 wt%

PTMC 1,5/32-3 VDE0815 19Z - Marshalling patchboard



3270394

<https://www.phoenixcontact.com/us/products/3270394>

Accessories

i Note: Applying some accessories below might limit this product.

DB 50- 90 BU - Wire bridge

2821180

<https://www.phoenixcontact.com/us/products/2821180>

Flexible wire loop bridge, 50-pos., conductor cross-section: 0.5 mm², loop length: 90 mm, ferrule length: 8 mm, color: blue



i Max. current carrying capacity: 8 A

DB 50- 90 BK - Wire bridge

2820916

<https://www.phoenixcontact.com/us/products/2820916>

Flexible wire loop bridge, 50-pos., conductor cross-section: 0.5 mm², loop length: 90 mm, ferrule length: 8 mm, color: black



i Max. current carrying capacity: 8 A

PTMC 1,5/32-3 VDE0815 19Z - Marshalling patchboard



3270394

<https://www.phoenixcontact.com/us/products/3270394>


DB 50- 90 GY - Wire bridge

2820929

<https://www.phoenixcontact.com/us/products/2820929>

Flexible wire loop bridge, 50-pos., conductor cross-section: 0.5 mm^2 , loop length: 90 mm, ferrule length: 8 mm, color: gray



 Max. current carrying capacity: 8 A

DB 50- 90 RD - Wire bridge

2864639

<https://www.phoenixcontact.com/us/products/2864639>

Flexible wire loop bridge, 50-pos., conductor cross-section: 0.5 mm^2 , loop length: 90 mm, ferrule length: 8 mm, color: red



 Max. current carrying capacity: 8 A

PTMC 1,5/32-3 VDE0815 19Z - Marshalling patchboard



3270394

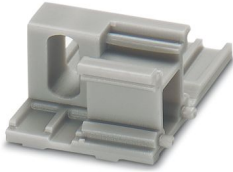
<https://www.phoenixcontact.com/us/products/3270394>

DF-PTMC-O - Flange cover

3270400

<https://www.phoenixcontact.com/us/products/3270400>

Flange cover, for direct mounting on top and for accommodating the marking, depth: 13 mm, width: 22 mm, height: 30 mm, color: gray



DF-PTMC-U - Flange cover

3270401

<https://www.phoenixcontact.com/us/products/3270401>

Flange cover, for direct mounting below, depth: 12.8 mm, width: 22 mm, height: 29.1 mm, color: gray



PTMC 1,5/32-3 VDE0815 19Z - Marshalling patchboard



3270394

<https://www.phoenixcontact.com/us/products/3270394>

DF-PTMC-NS - Adapter

3270403

<https://www.phoenixcontact.com/us/products/3270403>

Adapter, for mounting on a DIN rail, width: 22 mm, height: 64 mm, color: gray

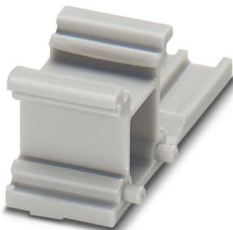


DF-PTMC-ZB - Marker adapter

3270410

<https://www.phoenixcontact.com/us/products/3270410>

Marker adapter, for direct mounting on top and for accommodating the marking, depth: 13 mm, width: 11 mm, height: 30 mm, color: gray



PTMC 1,5/32-3 VDE0815 19Z - Marshalling patchboard

3270394

<https://www.phoenixcontact.com/us/products/3270394>

RPS - Reducing plug

0201647

<https://www.phoenixcontact.com/us/products/0201647>



Reducing plug, number of positions: 1, color: gray

MPS-MT - Test plug

0201744

<https://www.phoenixcontact.com/us/products/0201744>



Test plug, with solder connection up to 1 mm² conductor cross section, number of positions: 1, color: gray

PTMC 1,5/32-3 VDE0815 19Z - Marshalling patchboard



3270394

<https://www.phoenixcontact.com/us/products/3270394>

MPS-IH WH - Insulating sleeve

0201663

<https://www.phoenixcontact.com/us/products/0201663>

Insulating sleeve, color: white



MPS-IH RD - Insulating sleeve

0201676

<https://www.phoenixcontact.com/us/products/0201676>

Insulating sleeve, color: red



PTMC 1,5/32-3 VDE0815 19Z - Marshalling patchboard



3270394

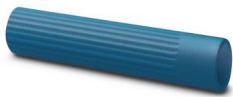
<https://www.phoenixcontact.com/us/products/3270394>

MPS-IH BU - Insulating sleeve

0201689

<https://www.phoenixcontact.com/us/products/0201689>

Insulating sleeve, color: blue



MPS-IH YE - Insulating sleeve

0201692

<https://www.phoenixcontact.com/us/products/0201692>

Insulating sleeve, color: yellow



PTMC 1,5/32-3 VDE0815 19Z - Marshalling patchboard



3270394

<https://www.phoenixcontact.com/us/products/3270394>

MPS-IH GN - Insulating sleeve

0201702

<https://www.phoenixcontact.com/us/products/0201702>

Insulating sleeve, color: green



MPS-IH GY - Insulating sleeve

0201728

<https://www.phoenixcontact.com/us/products/0201728>

Insulating sleeve, color: gray



PTMC 1,5/32-3 VDE0815 19Z - Marshalling patchboard



3270394

<https://www.phoenixcontact.com/us/products/3270394>

MPS-IH BK - Insulating sleeve

0201731

<https://www.phoenixcontact.com/us/products/0201731>

Insulating sleeve, color: black



SZF 0-0,4X2,5 - Screwdriver

1204504

<https://www.phoenixcontact.com/us/products/1204504>

Actuation tool, for ST terminal blocks, also suitable for use as a bladed screwdriver, size: 0.4 x 2.5 x 75 mm, 2-component grip, with non-slip grip



PTMC 1,5/32-3 VDE0815 19Z - Marshalling patchboard



3270394

<https://www.phoenixcontact.com/us/products/3270394>

ST-BW 0 - Actuation tool

1200135

<https://www.phoenixcontact.com/us/products/1200135>

Actuation tool, for all 1.5 mm² spring cages from PT 1,5/S and FT 1,5/S



Phoenix Contact 2024 © - all rights reserved

<https://www.phoenixcontact.com>

Phoenix Contact USA
586 Fulling Mill Road
Middletown, PA 17057, United States
(+717) 944-1300
info@phoenixcon.com