

Recommended PCB Layout  
(Tolerance:±0.05)

1.Material:

- 1.1 Housing: PBT UL94V-0 Black.  
Insert: PBT UL94V-0 Black.
- 1.2 Shell: 30u" Ni Over Brass(C2680),T=0.20mm.
- 1.3 RJ45 Terminal:Phosphor Bronze(C5210) T=0.35mm  
Plating:6u" Gold Plated On Contact Area,  
80u" ~120u" Tin Plated On Solder Area,  
30u" ~50u" Ni Underplated Overall.
- 1.4 Tail Terminal: Brass(C2680) T=0.35mm,  
Plating: 80u" ~120u" Tin Plated Over,  
30u" ~50u" Ni Underplated Overall.

2.Environmental requirements:

- 2.1 Lead-free process,compliant RoHS.

广州托克马斯电子有限公司

GENERAL TOLERANCE

X.°±5.0°	X.±0.38
.X°±3.0°	.X±0.30
.XX°±2.0°	.XX±0.25
.XXX°±1.0°	.XXX±0.15

DESIGNED: Joan.Zhao

DATE: 2025.08.19

DWG. NO.

HR915310

CHECKED: Joan.Zhao

DATE: 2025.08.19

PART NO.

HR915310

APPROVED: Sunny.F

DATE: 2025.08.19

TITLE.

D10-RJ45 1x1 Dip Vertical  
10/100 Base With LED 6u" NS

1

2

3

4

5

6

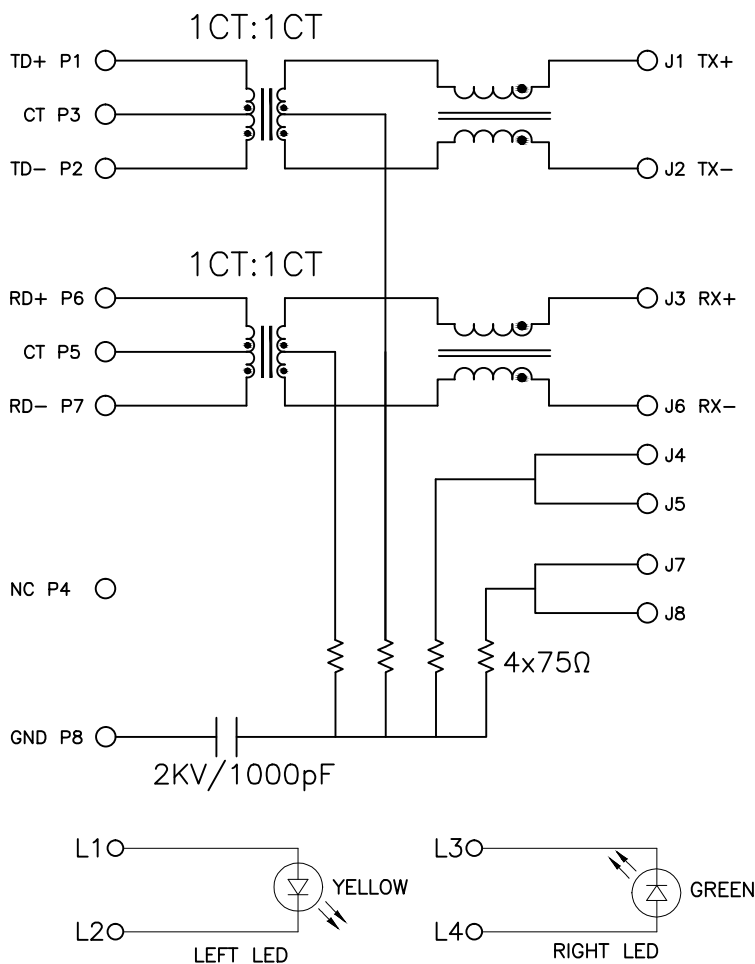
7

8

9

PCB CONNECTIONS

RJ45 CONNECTIONS



Emitting Color	$\lambda_p$ (nm)	$V_f@I_f=20mA$
Green	565	1.8-2.5V
YELLOW	585	1.8-2.5V

3. Electrical Specification @25°C:
- 3.1 Inductance: 350uH Min With 8mA DC bias.
- 3.2 Insertion loss :
- 1-100MHZ -1dB max.
- 3.3 Return loss :
- 1-30MHZ -18dB min.
- 30-60MHZ -13.5dB min.
- 60-80MHZ -12dB min.
- 80-100MHZ -10dB min.
- 3.4 Common Mode Rejection: 1-100MHZ -30dB min.
- 3.5 Cross Talk: 1-100MHZ -30dB min.
4. Operating and Storage Temperature:
- 4.1 Operating Temperature : -40°C to +85°C.
- 4.2 Storage Temperature : -40°C to +85°C.
5. Wave soldering peak temperature: 260°C.

广州托克马斯电子有限公司

GENERAL TOLERANCE	
X.±5.0°	X.±0.38
.X.±3.0°	.X.±0.30
.XX.±2.0°	.XX.±0.25
.XXX.±1.0°	.XXX.±0.15

DESIGNED: Joan.Zhao

DATE: 2025.08.19

DWG. NO.

HR915310

CHECKED: Joan.Zhao

DATE: 2025.08.19

PART NO.

HR915310

APPROVED: Sunny.F

DATE: 2025.08.19

TITLE.

D10-RJ45 1x1 Dip Vertical  
10/100 Base With LED 6u" NS