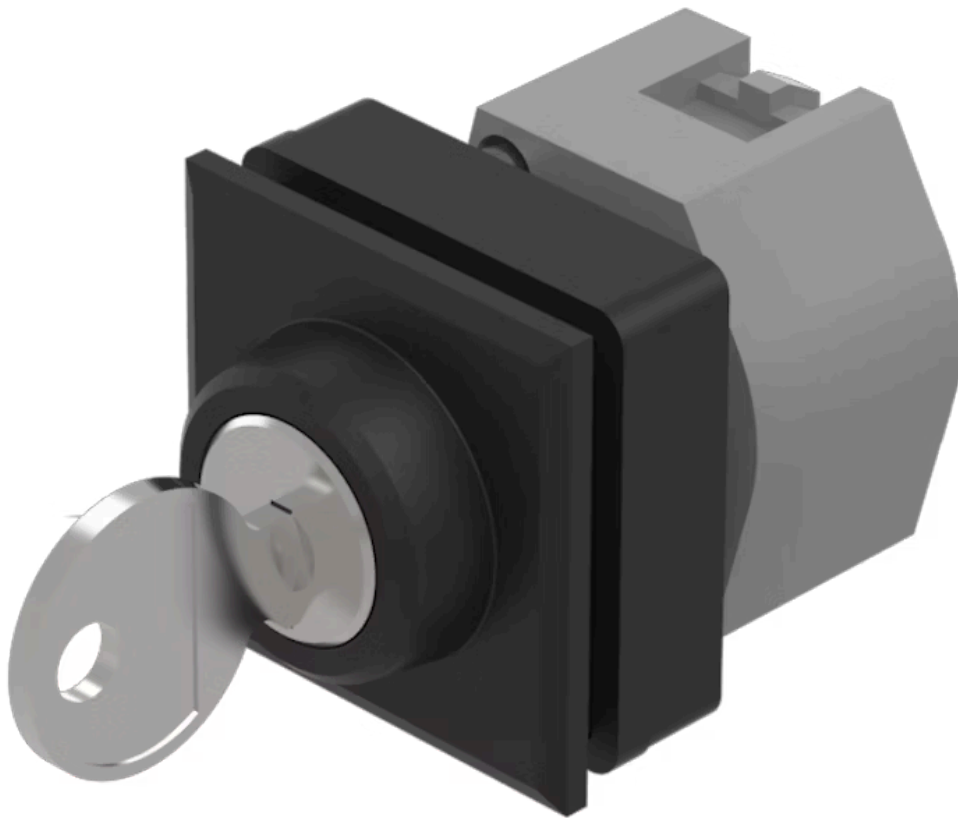


Actuator

704.341.000

Distribution by
DigiKey**DigiKey**<https://digikey.eao.com/p/704.341.000>

Your product:



704.341.000 Actuator

FRONT

| | |
|-----------------------|---------------|
| Front dimension: | 35 mm x 35 mm |
| Front bezel material: | Plastic |
| Front bezel colour: | Black |

MOUNTING

| | |
|-------------------|---------------|
| Design: | flush |
| Mounting cut-out: | 30 mm x 30 mm |

ELECTRICAL CHARACTERISTICS

| | |
|------------|---|
| Standards: | The switches comply with the "Standards for low-voltage switching devices" DIN EN 60947-1 |
|------------|---|

MECHANICAL CHARACTERISTIC

| | |
|----------------------|-----------------------------|
| Mechanical lifetime: | ≤50 000 cycles of operation |
| Switching positions: | 2 positions |
| Switching angle: | 90° right / -45° ... +45° |
| Switching action: | Rest (a) - Maintained |
| Weight: | 0.099 kg |

AMBIENT CONDITION

Operating temperature: – 40 °C ... + 55 °C

IP Protection: IP65 front side

Storage temperature: – 40 °C ... + 85 °C

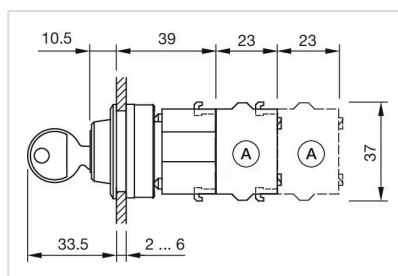
OTHER

max. number of switching elements: 3

Short Description: Actuator, 30 mm x 30 mm, 35 mm x 35 mm, Black, Plastic, Rest (a) - Maintained

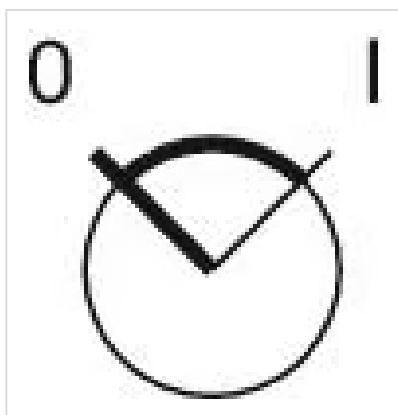
Hints: The standard lock Ronis 251, Further lock numbers on request, Max. 3 switching elements can be clipped on

Dimension drawings:



A = Screw terminal

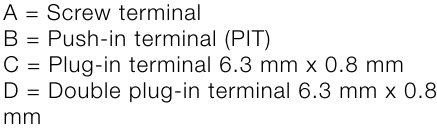
Switching positions:



Wiring diagrams:



Mounting cut-outs:



B = Push-in terminal (PIT)

C = Plug-in terminal 6.3 mm x 0.8 mm

D = Double plug-in terminal 6.3 mm x 0.8 mm