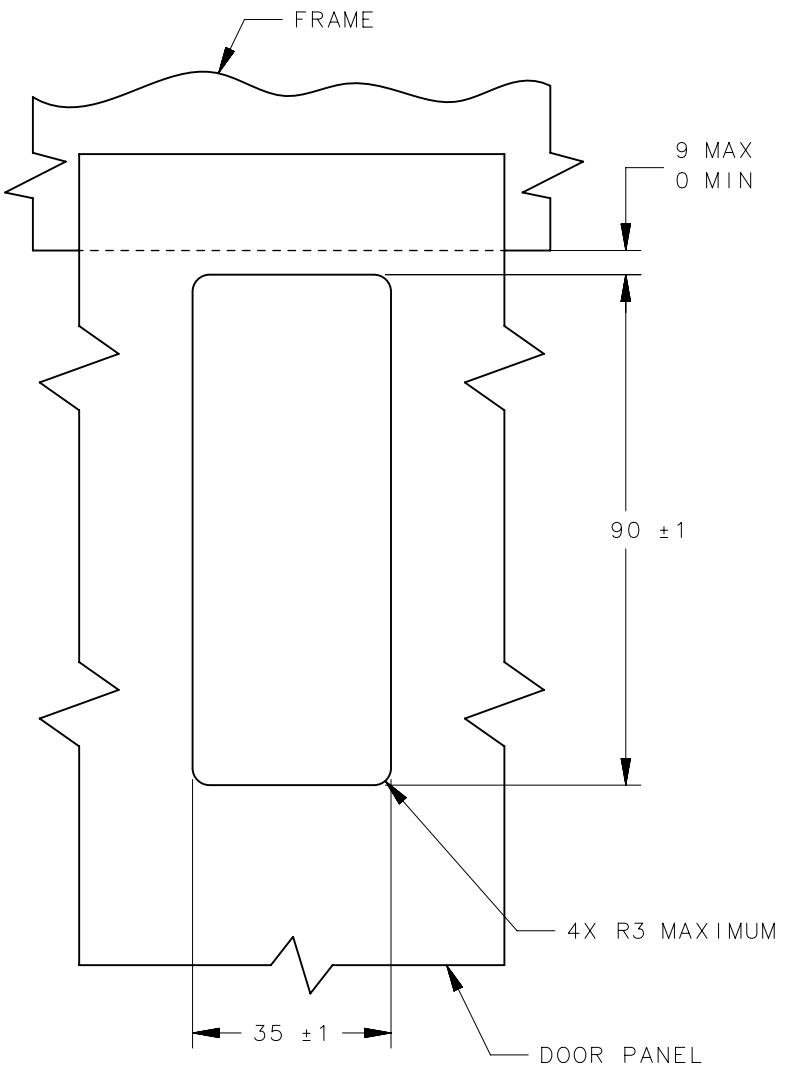


REVISION HISTORY			
REV	DATE	BY	DESCRIPTION
M	17JUN2024	PSP/SAK	PRN: P2024-1044

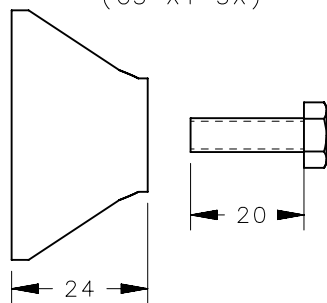
* SHORT LEVER GRIP RANGE AVAILABLE FROM 1 TO 14 MM.
REFERENCE DRAWING NUMBER J-C5-1

* MEDIUM LEVER GRIP RANGE AVAILABLE FROM 14 TO 29 MM.
REFERENCE DRAWING NUMBER J-C5-2

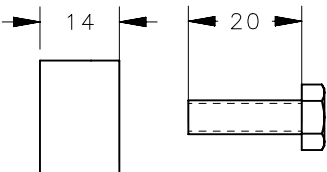


PANEL PREPARATION

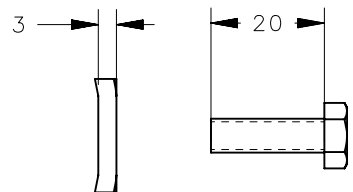
PANEL THICKNESS 1-11
(C5-X1-3X)



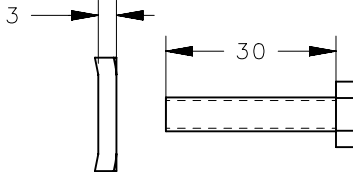
PANEL THICKNESS 11-21
(C5-X2-3X)



PANEL THICKNESS 21-31
(C5-X3-3X)



PANEL THICKNESS 31-41
(C5-X4-3X)

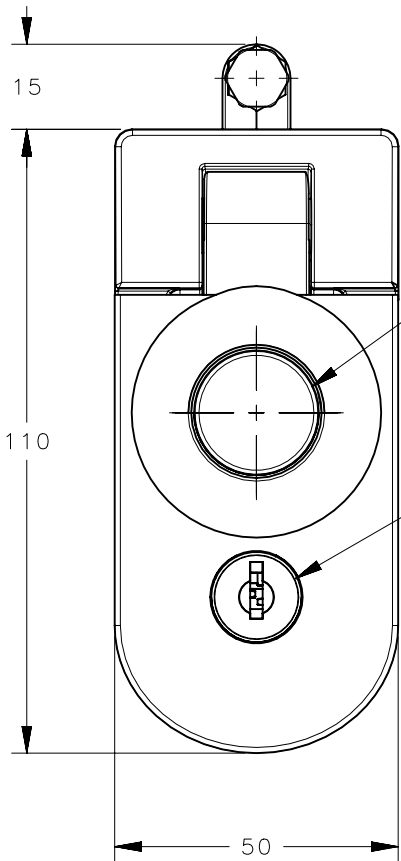


GRIP ADJUSTMENT
SEE CHART ABOVE

HANDLE IN RAISED
(OPEN) POSITION

BUTTON

LOCKPLUG



DOOR

FRAME

JAM NUT

ADJUSTMENT
SCREW

LEVER AND CRANK

MOUNTING AND
ADJUSTMENT SCREWS
ARE M6 THREAD

HOUSING

85 MAXIMUM

PANEL THICKNESS
SEE CHART ABOVE

22

NOTES:

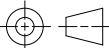
1. MATERIAL AND FINISH:

- HOUSING, HANDLE , AND BUTTON: DIE CAST ZINC, BLACK POWDER COAT WITH STEEL HARDWARE.
- LEVER AND CRANK: DIE CAST ZINC, CLEAR CHEMICAL PROTECTIVE FILM
- TORSION SPRING: 302 STAINLESS STEEL, PASSIVATED,
- ROLL PIN: 420 STAINLESS STEEL, PASSIVATED,
- O-RING: BUNA-N, NATURAL
- STANDARD LOCK PLUG: DIE CAST ZINC, BLACK POWDER COATING
- SHUTTERED LOCK PLUG (BLACK POWDER COATED ASSEMBLY):
DIE CAST ZINC WITH ALUMINIUM, BLACK ANODIZED CAP AND STAINLESS STEEL SHUTTER,
- SHUTTERED LOCK PLUG (POLISHED CHROME ASSEMBLY):
DIE CAST ZINC WITH STAINLESS STEEL CAP AND STAINLESS STEEL SHUTTER
- KEYS: BRASS, NICKEL PLATED
- ADJUSTING SCREW, JAM NUT, MOUNTING BRACKET AND SCREW:
1010 STEEL, ZINC PLATED CHROMATE PLUS SEALER.

2. LOCKPLUG INSTALLATION:

- POSITION LOCKPLUG AND ORIENT RETAINING WAFER
(LAST WAFER LOCATED AT THE BOTTOM OF LOCK) AT THE 3 O'CLOCK POSITION AND INSERT INTO THE HANDLE.
- BE SURE THE LOCKPLUG IS FULLY SEATED AGAINST THE HANDLE, THEN REMOVE KEY.

31-41	29-45	C5-24-35	C5-34-35	C5-44-35	C5-54-35	C5-64-35	C5-94-35
21-31		C5-23-35	C5-33-35	C5-43-35	C5-53-35	C5-63-35	C5-93-35
11-21		C5-22-35	C5-32-35	C5-42-35	C5-52-35	C5-62-35	C5-92-35
1-11		C5-21-35	C5-31-35	C5-41-35	C5-51-35	C5-61-35	C5-91-35
PANEL THICKNESS (mm)	LONG LEVER GRIP RANGE *	STANDARD KEY LOCK	SHUTTERED KEY LOCK	4 MM HEX RECESS	No. 2 PHILLIPS	RAILWAY STANDARD	WITHOUT LOCKPLUG

	THIRD ANGLE PROJECTION		southco® CONNECT • CREATE • INNOVATE			
	MILLIMETERS [IN]					
	TOLERANCES UNLESS OTHERWISE NOTED		DESCRIPTION			
	ALL DIMENSIONS WITHOUT TOLERANCES ARE FOR REFERENCE ONLY.		C5 SEALED LEVER LATCH WITH KEY OR TOOL ACCESS LOCKS			
			SIZE A3	SYSTEM NX	DWG NO. J-C5-L3	
PROPRIETARY ITEM <small>EXCEPT FOR USES EXPRESSLY GRANTED IN WRITING, INFORMATION DISCLOSED HEREON IS CONFIDENTIAL AND ALL RIGHTS, PATENT AND OTHERWISE, ARE RESERVED BY SOUTHCO, INC.</small>	PER ASME Y14.5M-2009		DRAWN BY JAD	DATE 16MAR1992	SCALE 0.75:1	SHEET 1 OF 1