

UM-ALU 4-72 COVERLID 45 AL - Lateral element



2201758

<https://www.phoenixcontact.com/us/products/2201758>

Please be informed that the data shown in this PDF document is generated from our online catalog. Please find the complete data in the user documentation. Our general terms of use for downloads are valid.

Press-drawn section housings, Screw mounting, Side elements (left and right) incl. snap-on foot and screws for profile cover UM-ALU 4 AU..L..., width: 75.4 mm, height: 2 mm, depth: 58.5 mm



Your advantages

- Aluminum extruded profile
- Variety of connection technology
- Can be mounted on the DIN rail
- Available in lengths from 42.5 mm ... 990 mm, can be cut to any length
- Available in overall widths of 75 mm and 105 mm
- EMC protection

Commercial data

| | |
|--------------------------------------|---------------|
| Item number | 2201758 |
| Packing unit | 1 pc |
| Minimum order quantity | 1 pc |
| Product key | ACHDFC |
| GTIN | 4046356909044 |
| Weight per piece (including packing) | 47.6 g |
| Weight per piece (excluding packing) | 40 g |
| Country of origin | HU |

UM-ALU 4-72 COVERLID 45 AL - Lateral element



2201758

<https://www.phoenixcontact.com/us/products/2201758>

Technical data

Product properties

| | |
|------------------------------|---|
| Product type | Panel mounting base side part |
| Housing type | Press-drawn section housings |
| Housing series | UM-ALU |
| Product family | UM-ALU 4-72 |
| Type | Side elements (left and right) incl. snap-on foot and screws for profile cover UM-ALU 4 AU..L.. |
| Ventilation openings present | no |

Dimensions

| | |
|--------|---------|
| Width | 75.4 mm |
| Height | 2 mm |
| Depth | 58.5 mm |

Material specifications

| | |
|-------------------------|----------|
| Color (Housing) | aluminum |
| Housing material | Aluminum |
| Surface characteristics | anodized |

Environmental and real-life conditions

Ambient conditions

| | |
|---|--|
| Max. IP code to attain | IP40 |
| Ambient temperature (operation) | -40 °C ... 105 °C (depending on power dissipation) |
| Ambient temperature (storage/transport) | -40 °C ... 55 °C |
| Ambient temperature (assembly) | -5 °C ... 100 °C |

Mounting

| | |
|---------------------------|---|
| Mounting type | Screw mounting |
| Tightening torque / speed | Screw connection with header/profile cover: 0.8 Nm-1 Nm / rpm-rpm |

Packaging specifications

| | |
|----------------------|---------------------|
| Type of packaging | packed in cardboard |
| Outer packaging type | Carton |

UM-ALU 4-72 COVERLID 45 AL - Lateral element

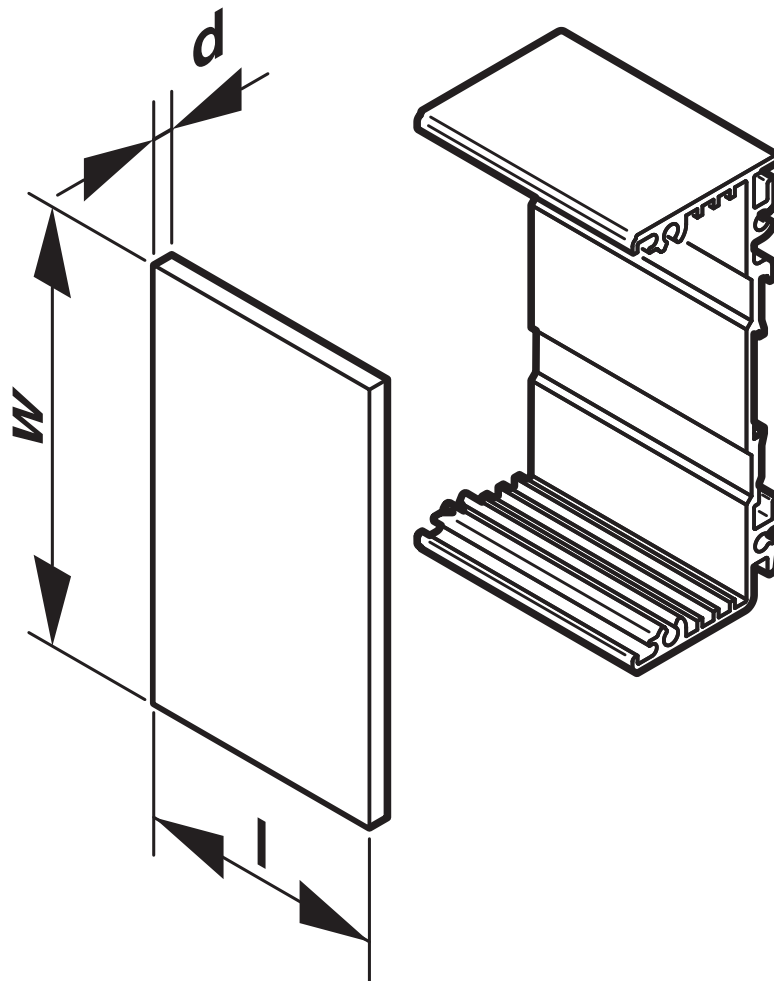
2201758

<https://www.phoenixcontact.com/us/products/2201758>



Drawings

Schematic diagram



UM-ALU 4-72 COVERLID 45 AL - Lateral element



2201758

<https://www.phoenixcontact.com/us/products/2201758>

Classifications

ECLASS

| | |
|-------------|----------|
| ECLASS-11.0 | 27182701 |
| ECLASS-13.0 | 27190602 |

ETIM

| | |
|----------|----------|
| ETIM 9.0 | EC002779 |
|----------|----------|

UNSPSC

| | |
|-------------|----------|
| UNSPSC 21.0 | 31261500 |
|-------------|----------|

UM-ALU 4-72 COVERLID 45 AL - Lateral element



2201758

<https://www.phoenixcontact.com/us/products/2201758>

Environmental product compliance

| | |
|---|--|
| EU RoHS | |
| Fulfills EU RoHS substance requirements | Yes, No exemptions |
| China RoHS | |
| Environment friendly use period (EFUP) | EFUP-E |
| | No hazardous substances above the limits |
| EU REACH SVHC | |
| REACH candidate substance (CAS No.) | No substance above 0.1 wt% |

UM-ALU 4-72 COVERLID 45 AL - Lateral element



2201758

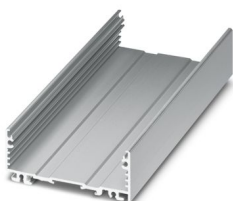
<https://www.phoenixcontact.com/us/products/2201758>

Accessories

UM-ALU 4-72 PROFILE 42,5 - Profile

2200917

<https://www.phoenixcontact.com/us/products/2200917>

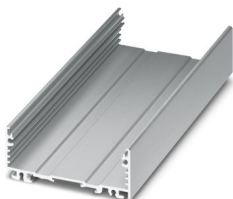


Press-drawn section housings, Screw mounting, Basic profile, profile width (internal): 72 mm, profile width (external): 75 mm, length: 42.5 mm, depth: 29.4 mm

UM-ALU 4-72 PROFILE 60 - Profile

2200918

<https://www.phoenixcontact.com/us/products/2200918>



Press-drawn section housings, Screw mounting, Basic profile, profile width (internal): 72 mm, profile width (external): 75 mm, length: 60 mm, depth: 29.4 mm

UM-ALU 4-72 COVERLID 45 AL - Lateral element



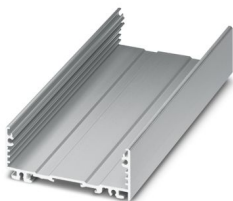
2201758

<https://www.phoenixcontact.com/us/products/2201758>

UM-ALU 4-72 PROFILE 95 - Profile

2200919

<https://www.phoenixcontact.com/us/products/2200919>

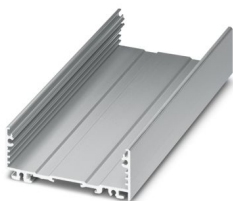


Press-drawn section housings, Screw mounting, Basic profile, profile width (internal): 72 mm, profile width (external): 75 mm, length: 95 mm, depth: 29.4 mm

UM-ALU 4-72 PROFILE 130 - Profile

2200920

<https://www.phoenixcontact.com/us/products/2200920>



Press-drawn section housings, Screw mounting, Basic profile, profile width (internal): 72 mm, profile width (external): 75 mm, length: 130 mm, depth: 29.4 mm

UM-ALU 4-72 COVERLID 45 AL - Lateral element



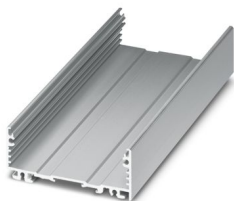
2201758

<https://www.phoenixcontact.com/us/products/2201758>

UM-ALU 4-72 PROFILE 165 - Profile

2200921

<https://www.phoenixcontact.com/us/products/2200921>

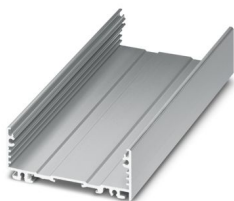


Press-drawn section housings, Screw mounting, Basic profile, profile width (internal): 72 mm, profile width (external): 75 mm, length: 165 mm, depth: 29.4 mm

UM-ALU 4-72 PROFILE 200 - Profile

2200922

<https://www.phoenixcontact.com/us/products/2200922>



Press-drawn section housings, Screw mounting, Basic profile, profile width (internal): 72 mm, profile width (external): 75 mm, length: 200 mm, depth: 29.4 mm

UM-ALU 4-72 COVERLID 45 AL - Lateral element



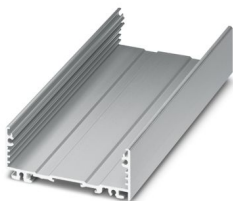
2201758

<https://www.phoenixcontact.com/us/products/2201758>

UM-ALU 4-72 PROFILE 235 - Profile

2200923

<https://www.phoenixcontact.com/us/products/2200923>

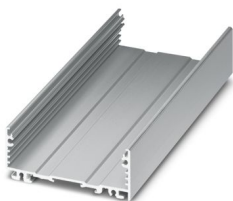


Press-drawn section housings, Screw mounting, Basic profile, profile width (internal): 72 mm, profile width (external): 75 mm, length: 235 mm, depth: 29.4 mm

UM-ALU 4-72 PROFILE 990 - Profile

2200924

<https://www.phoenixcontact.com/us/products/2200924>



Press-drawn section housings, Screw mounting, Basic profile, profile width (internal): 72 mm, profile width (external): 75 mm, length: 990 mm, depth: 29.4 mm

UM-ALU 4-72 COVERLID 45 AL - Lateral element



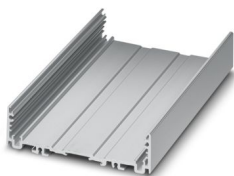
2201758

<https://www.phoenixcontact.com/us/products/2201758>

UM-ALU 4-72 PROFILE 111 - Profile

2201930

<https://www.phoenixcontact.com/us/products/2201930>



Press-drawn section housings, Screw mounting, Basic profile, profile width (internal): 72 mm, profile width (external): 75 mm, length: 111 mm, depth: 29.4 mm

UM-ALU 4 AU45 L42,5 - Profile cover

2200954

<https://www.phoenixcontact.com/us/products/2200954>



Press-drawn section housings, Screw mounting, Profile cover, width: 45.6 mm, profile width (internal): 42 mm, profile width (external): 45.6 mm, length: 42.5 mm, depth: 28.1 mm

UM-ALU 4-72 COVERLID 45 AL - Lateral element



2201758

<https://www.phoenixcontact.com/us/products/2201758>

UM-ALU 4 AU45 L60 - Profile cover

2200955

<https://www.phoenixcontact.com/us/products/2200955>



Press-drawn section housings, Screw mounting, Profile cover, width: 45.6 mm, profile width (internal): 42 mm, profile width (external): 45.6 mm, length: 60 mm, depth: 28.1 mm

UM-ALU 4 AU45 L95 - Profile cover

2200956

<https://www.phoenixcontact.com/us/products/2200956>



Press-drawn section housings, Screw mounting, Profile cover, width: 45.6 mm, profile width (internal): 42 mm, profile width (external): 45.6 mm, length: 95 mm, depth: 28.1 mm

UM-ALU 4-72 COVERLID 45 AL - Lateral element



2201758

<https://www.phoenixcontact.com/us/products/2201758>

UM-ALU 4 AU45 L130 - Profile cover

2200957

<https://www.phoenixcontact.com/us/products/2200957>



Press-drawn section housings, Screw mounting, Profile cover, width: 45.6 mm, profile width (internal): 42 mm, profile width (external): 45.6 mm, length: 130 mm, depth: 28.1 mm

UM-ALU 4 AU45 L165 - Profile cover

2200958

<https://www.phoenixcontact.com/us/products/2200958>



Press-drawn section housings, Screw mounting, Profile cover, width: 45.6 mm, profile width (internal): 42 mm, profile width (external): 45.6 mm, length: 165 mm, depth: 28.1 mm

UM-ALU 4-72 COVERLID 45 AL - Lateral element



2201758

<https://www.phoenixcontact.com/us/products/2201758>

UM-ALU 4 AU45 L235 - Profile cover

2200960

<https://www.phoenixcontact.com/us/products/2200960>



Press-drawn section housings, Screw mounting, Profile cover, width: 45.6 mm, profile width (internal): 42 mm, profile width (external): 45.6 mm, length: 235 mm, depth: 28.1 mm

UM-ALU 4 AU45 L990 - Profile cover

2200961

<https://www.phoenixcontact.com/us/products/2200961>



Press-drawn section housings, Screw mounting, Profile cover, width: 45.6 mm, profile width (internal): 42 mm, profile width (external): 45.6 mm, length: 990 mm, depth: 28.1 mm

Phoenix Contact 2024 © - all rights reserved
<https://www.phoenixcontact.com>

Phoenix Contact USA
586 Fulling Mill Road
Middletown, PA 17057, United States
(+717) 944-1300
info@phoenixcon.com