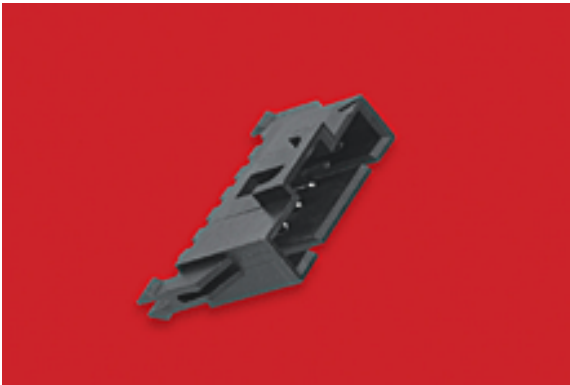




**Part Number :** [705410036](#)  
**Product Description :** 2.54mm Pitch SL Header, Single Row, Vertical, 3.05mm Pocket, Shrouded, with Beveled Plastic Peg, 2 Circuits, 0.38µm Gold (Au) Selective Plating, Tin (Sn) PC Tail Plating  
**Series Number :** 70541  
**Status :** Active  
**Product Category :** PCB Headers and Receptacles



Documents & Resources

**Drawings**  
[Drawing 705410036\\_sd.pdf](#)  
[Packaging Design Drawing PK-70873-0014-001.pdf](#)

**3D Models and Design Files**  
[3D Model 705410036\\_stp.zip](#)

**Specifications**  
[Product Specification PS-70400-001.pdf](#)  
[Product Specification PS-70541-001.pdf](#)  
[Test Summary TS-70541-100-001.pdf](#)

Product Environment Compliance

Compliance

GADSL/IMDS	Not Relevant
China RoHS	
EU ELV	Not Relevant
Low-Halogen Status	Not Low-Halogen per IEC 61249-2-21
REACH SVHC	Not Contained per D(2024)4144-DC (27 June 2024)
EU RoHS	Compliant per EU 2015/863

Multiple Part Product Compliance Statements  
- Eu RoHS  
- REACH SVHC

- Low-Halogen

#### Multiple Part Industry Compliance Documents

- IPC 1752A Class C
- IPC 1752A Class D
- Molex Product Compliance Declaration
- IEC-62474
- chemSHERPA (xml)

#### EU RoHS Certificate of Compliance

---

## Part Details

### General

Status	Active
Category	PCB Headers and Receptacles
Series	70541
Description	2.54mm Pitch SL Header, Single Row, Vertical, 3.05mm Pocket, Shrouded, with Beveled Plastic Peg, 2 Circuits, 0.38µm Gold (Au) Selective Plating, Tin (Sn) PC Tail Plating
Application	Signal, Wire-to-Board
Component Type	PCB Header
Product Family	SL Modular Connectors
Product Name	SL
UPC	800755032642

### Agency

CSA	LR19980
UL	E29179

### Electrical

Current - Maximum per Contact	3.0A
Voltage - Maximum	250V

### Physical

Breakaway	No
Circuits (Loaded)	2

Circuits (maximum)	2
Color - Resin	Black
Durability (mating cycles max)	50
First Mate / Last Break	No
Flammability	94V-0
Glow-Wire Capable	No
Guide to Mating Part	No
Keying to Mating Part	None
Lock to Mating Part	Yes
Material - Metal	Brass, Phosphor Bronze
Material - Plating Mating	Gold
Material - Plating Termination	Tin
Material - Resin	High Temperature Thermoplastic
Net Weight	0.599/g
Number of Rows	1
Orientation	Vertical
Packaging Type	Tube
PC Tail Length	3.30mm
PCB Locator	Yes
PCB Retention	Yes
PCB Thickness - Recommended	1.60mm
Pitch - Mating Interface	2.54mm
Plating min - Mating	0.381µm
Plating min - Termination	1.905µm
Polarized to Mating Part	Yes
Shrouded	Fully
Stackable	No
Temperature Range - Operating	-40° to +105°C
Termination Interface Style	Through Hole

#### Solder Process Data

Lead-Free Process Capability	WAVE
------------------------------	------

---

#### Mates With / Use With

## Mates with Part(s)

Description	Part Number
SL Single Row Crimp Housings and CPA Retainers	<u>70066</u>
SL Single Row Female Insulation Displacement Connector Assemblies	<u>70400</u>
SL Single Row Female Receptacles	<u>70430</u>

---

---

This document was generated on Sep 20, 2024