

4

3

2

1

THIS DRAWING IS UNPUBLISHED.

RELEASED FOR PUBLICATION

© COPYRIGHT

ALL RIGHTS RESERVED.

LOC

DIST


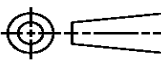
REVISIONS

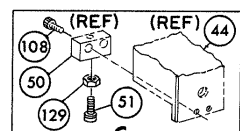
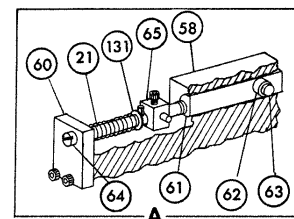
P	LTR	DESCRIPTION	DATE	DWN	APVD
	F1	ECR-14-001878	10FEB2014	GK	HMR

REPLACED BY OCEAN STYLE APPLICATOR PART
NUMBER 2151128-1

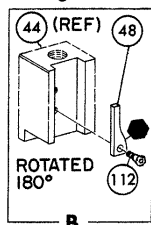
FOR REPLACEMENT PARTS FOR APPLICATOR 466431-2
REFER TO ADDITIONAL PAGE(S). SPARE PARTS KIT (IF LISTED)
WILL REMAIN AVAILABLE.

THE REPLACEMENT OCEAN STYLE APPLICATOR HAS THE
SAME TERMINATOR/PRESS INTERFACE AS APPLICATOR
466431-2

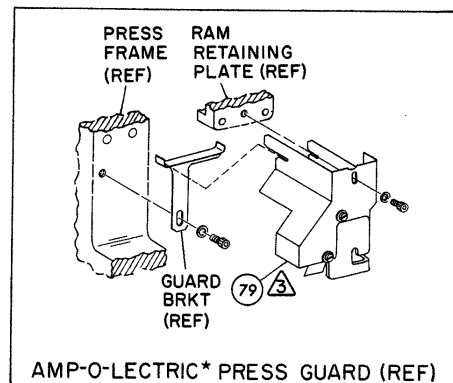
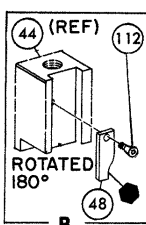
THIS DRAWING IS A CONTROLLED DOCUMENT.		DWN	GOPALAKRISHNA HV		 TE Connectivity				
DIMENSIONS:		CHK	RAGHAVENDRA						
		TOLERANCES UNLESS OTHERWISE SPECIFIED:		NAME					
		0 PLC ±		MINIATURE QUICK CHANGE					
		1 PLC ±		APPLICATOR SIDE FEED					
2 PLC ±		APVD		RAGHAVENDRA		SIZE	CAGE CODE	DRAWING NO	RESTRICTED TO
3 PLC ±		PRODUCT SPEC							
4 PLC ±		APPLICATION SPEC							
ANGLES ±		WEIGHT		A 3					
FINISH		CUSTOMER DRAWING		SCALE		SHEET 1 OF 2		REV F1	



PRE-FEED
1 1/8" STROKE



POST-FEED
1 5/8" STROKE



NOTES:

1- ONLY THE ITEMS WITH QUANTITIES SPECIFIED ON PARTS LIST ARE USED ON THIS APPLICATOR.

2- USED IN PLACE OF ITEM 38 WHEN INSULATION CRIMP IS NOT USED.

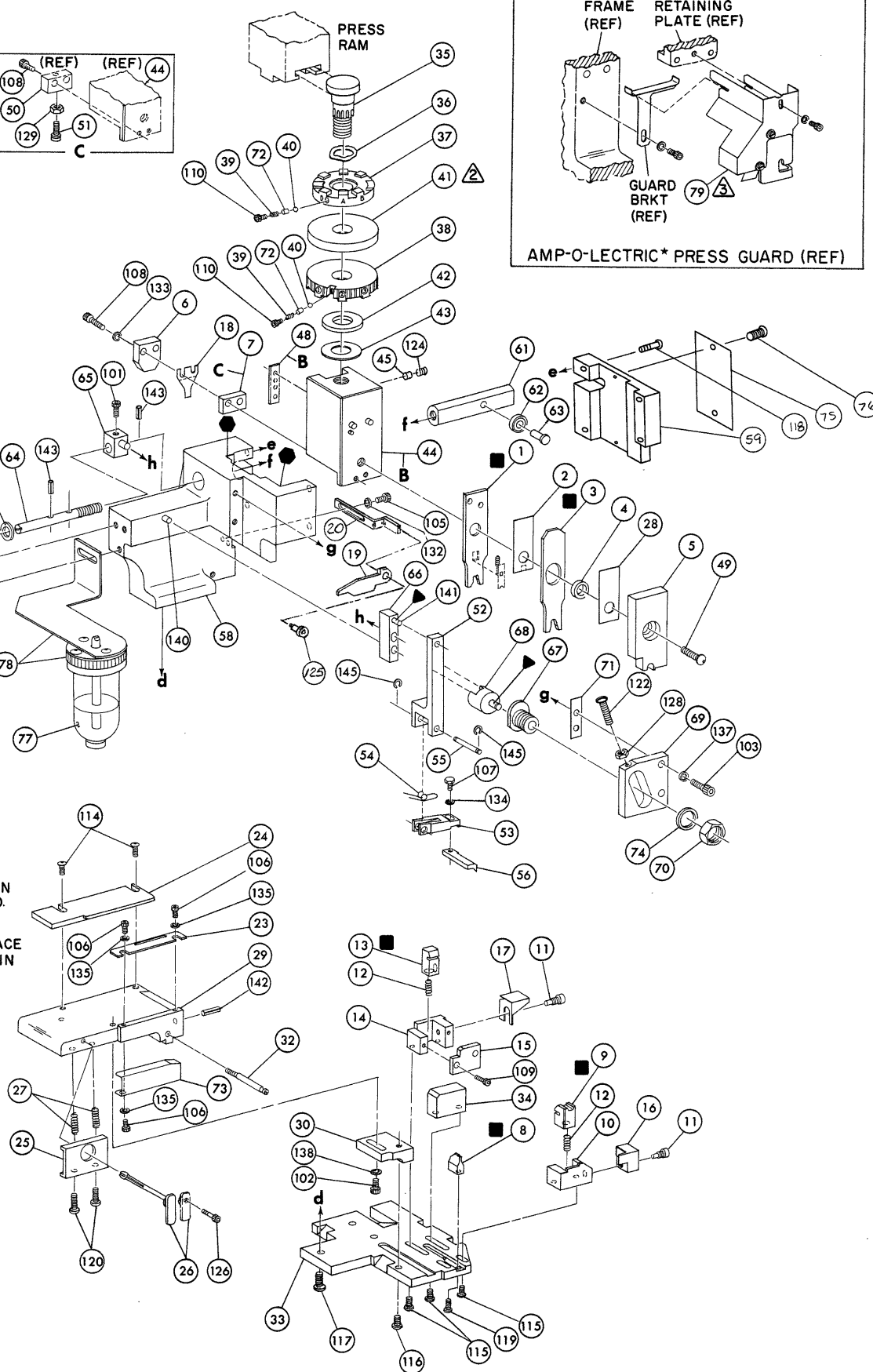
3- GUARD MUST BE IN PLACE WHEN OPERATING APPLICATOR IN AMP-O-LECTRIC PRESS.

4- ITEMS WITH QTY. OF REF. SPECIFIED (EXCEPT ITEM 79) ARE USED ON ITEM 46.

KEY:

RECOMMENDED SPARE PARTS CUSTOMER RESPONSIBLE FOR REPLACEMENT.

LUBRICATE DAILY USING NO. 20 MACHINE OIL.



REF.	21045-3	RING, RETAINING 'C' (.187 DIA) FEED FINGER PIN	145	REF.	454220-1	CAP, HOUSING	59
REF.			144	REF.	454485-1	HOUSING	58
1	5-21028-1	PIN, SLOT SPR (.125 DIA X .50) ADJ ROD	143				57
REF.	4-21028-0	PIN, SLOT SPR (.093 DIA X .75) STR G PLATE	142	1	458537-2	PAWL, FEED	56
REF.	1-21030-1	PIN, DOWEL (.187 DIA X .50) LEVER	141	REF.	240624-1	PIN, FEED FINGER	55
REF.	1-21030-6	PIN, DOWEL (.187 DIA X 1.25) HOUSING	140	REF.	691499-1	SPRING, FEED FINGER	54
—	21024-5	WASHER, LOCK (NO 10) LUB ASSY	139	REF.	690541-1	FINGER, FEED	53
1	21024-5	WASHER, LOCK (NO 10) STRIP GUIDE ADJ BLOCK	138	REF.	455679-1	LEVER, TERMINAL FEED ARM	52
REF.	21024-5	WASHER, LOCK (NO 10) ADJ PLATE	137	1	811242-2	BUMPER, HOLDDOWN	51
REF.	21024-5	WASHER, LOCK (NO 10) FEED GUIDE ROD	136	1	690753-1	SPACER, TONKER	50
3	21057-2	WASHER, LOCK (NO 4) FRONT STRIP GUIDE	135	1	7-21002-9	BOLT, CRIMPER	49
1	21024-4	WASHER, LOCK (NO 8) FEED FINGER	134	1	690602-5	CAM PRE- FEED 1 1/8 STROKE	48
2	21024-4	WASHER, LOCK (NO 8) DEPRESSOR	133				47
1	21024-4	WASHER, LOCK (NO 8) STRIPPER	132	1	459456-1	APPLICATOR, BASIC (SUB ASSY)	46
REF.	21899-4	WASHER, FLAT (5/16 DIA) SCREW ADJ	131	1	690191-1	PLUG, NYLON	45
—	21899-2	WASHER, FLAT (NO 10) LUB ASSY	130	1	455673-1	RAM	44
1	21068-5	NUT, HEX MACH (6-32) HOLDDOWN	129	1	690125-1	WASHER, LAMINATED	43
REF.	21068-5	NUT, HEX MACH (6-32) FEED ADJ	128	1	690124-1	WASHER, RAM	42
			127			DISC, SPACER	41
—	22353-8	SCR, SHLD. (.187 DIA X .250 LG) DRAG LEVER	126	2	23241-6	BALL, STEEL	40
1	456567-1	SCR. SHLD. (.188 DIA. X .125 LG.) STRIPPER	125	2	690170-1	SPRING, COMPRESSION	39
1	21009-2	SCR, SKT SET (1/4-20 X .25) (LOC-WEL) RAM	124	1	690142-1	DISC, INSULATION	38
			123	1	6-690141-8	DISC, WIRE	37
REF.	3-21064-2	SCR, RD HD MACH (6-32 X 1.50) FEED ADJ	122	1	22480-5	WASHER, SPRING	36
			121	1	690212-1	POST, RAM	35
2	3-21002-0	SCR, BUT HD SKT CAP (10-32 X .88) DRAG	120	1	690786-2	SUPPORT, TERMINAL	34
1	22733-8	SCR, BUT HD SKT CAP (8-32 X .38) (LOC-WEL) ANVIL	119	REF.	455675-1	PLATE, BASE	33
REF.	2-21002-9	SCR, BUT HD SKT CAP (10-32 X .75) CAP	118	1	690432-3	SCREW, ADJUSTMENT	32
REF.	1-24073-9	SCR, BUT HD SKT CAP (1/4-20 X .75) HOUSING	117				31
REF.	2-21002-7	SCR, BUT HD SKT CAP (10-32 X .50) SG ADJ BLOCK	116	REF.	455689-1	BLOCK, STRIP GUIDE ADJ	30
4	2-21002-2	SCR, BUT HD SKT CAP (8-32 X .50) SHEAR	115	1	455671-1	PLATE, STRIP GUIDE	29
2	2-21002-2	SCR, BUT HD SKT CAP (8-32 X .50) R STRIP GUIDE	114	1	455888-5	SPACER, FRONT SHEAR DEPRESSOR	28
			113	2	1-22284-0	SPRING, DRAG	27
1	1-21002-7	SCR, BUT HD SKT CAP (6-32 X .38) CAM	112	1	690546-1	LEVER, DRAG RELEASE	26
—	3-21000-4	SCR, SKT HD CAP (10-32 X .38) LUBRICATOR ASSY	111	1	240792-1	DRAG, STOCK	25
2	23030-1	SCR, SKT HD CAP (6-32 X .25) (LOC-WEL) CP DISC	110	1	690504-8	GUIDE STRIP (REAR)	24
		SCR, SKT HD CAP (6-32 X) REAR SHEAR PLATE	109	1	690438-1	GUIDE, STRIP (FRONT)	23
2	2-21000-7	SCR, SKT HD CAP (8-32 X .50) DEPRESSOR	108				22
1	2-22603-0	SCR, HEX HD MACH (8-32 X .31) FEED FINGER	107	REF.	4-22284-9	SPRING, FEED RETURN	21
3	1-21000-3	SCR, SKT HD CAP (4-40 X .25) F STRIP GUIDE	106	1	458950-1	ARM, STRIPPER	20
1	2-21000-7	SCR, SKT HD CAP (8-32 X .50) STRIPPER	105	1	458949-1	STRIPPER	19
REF.	3-21000-7	SCR, SKT HD CAP (10-32 X .75) FEED ROD GUIDE	104			HOLDER, TERMINAL	18
REF.	3-21000-6	SCR, SKT HD CAP (10-32 X .62) FEED ADJ BLOCK	103			GUARD, CHIP (REAR)	17
1	3-21000-4	SCR, SKT HD CAP (10-32 X .38) SG ADJ BLOCK	102	1	691667-1	GUARD, CHIP (FRONT)	16
REF.	3-21000-4	SCR, SKT HD CAP (10-32 X .38) PIVOT BLOCK	101			PLATE, SHEAR (REAR)	15
REF.	455749-1	GUARD, WINDOW	79			HOLDER, SHEAR (REAR)	14
—	1-465184-0	LUBRICATOR ASSY	78			SHEAR, FLOAT (REAR)	13
		OIL, LUBRICATING	77	1	5-22280-0	SPRING, SHEAR	12
2	21017-2	SCR, DRIVE (#2 X .19) ID PLATE	76	1	690461-1	STOP, SHEAR	11
1	461264-1	PLATE, ID	75	1	690459-1	HOLDER, SHEAR (FRONT)	10
REF.	458109-1	WASHER, SPECIAL	74	1	454276-1	SHEAR, FLOAT (FRONT)	9
1	454877-3	PLATE, STRIP GUIDE COVER	73	1	690735-1	ANVIL	8
2	690603-1	SPRING, ASSIST	72			SPACER, DEPRESSOR (REAR)	7
REF.	690517-1	SPACER	71			DEPRESSOR, SHEAR (REAR)	6
22594-8	NUT, HEX		70	1	1-455889-4	DEPRESSOR, SHEAR (FRONT)	5
240628-1	PLATE, ADJUSTMENT		69	1	238011-2	SPACER, TUBULAR, INS CRIMPER	4
240626-1	SHAFT, PIVOT		68	1	6-456134-1	CRIMPER, INSULATION	3
240633-1	BUSHING		67	1	455888-6	SPACER, CRIMPER	2
455680-1	LEVER, INTERMEDIATE		66	1	456408-6	CRIMPER, WIRE	1
240629-1	BLOCK, PIVOT		65				
240632-2	SCREW, ADJUSTMENT FEED ROD		64	QTY	PART NO	DESCRIPTION	ITEM NO
240659-3	PIN, CAM ROLLER		63	CRIMPING DATA			APPLICATOR WILL APPLY
240658-1	ROLLER, CAM		62	PAD LTR	CRIMP HEIGHT	WIRE SIZE	WIRE STRIP LENGTH
454398-2	ROD, FEED		61	A	.070	14	42474
REF.	454178-1	GUIDE, FEED ROD	60	B	.061	16	62537

REMARKS		NO	REV
TO APPLY TERMINAL SPEC 114-2036			
APPL USED ON MACHINE PART NO	MACH SERIAL NO	DISTRIBUTION	
CUSTOMER NAME	APPL SERIAL NO	ORIGINAL	
ADDRESS	PURCHASE ORDER	CUSTOMER COPY	
CITY	ENG APP	FIELD ENG COPY	

CRIMPING DATA				APPLICATOR WILL APPLY	
PAD LTR	CRIMP HEIGHT	WIRE SIZE	WIRE STRIP LENGTH		
A	.070	14		42474	
B	.061	16		62537	
C	.055	18			
D	NOT USED				
CRIMP	SIZE	TYPE	FEED	APPL INST	
WIRE	.110	F	.540	A18040	
INSUL	.180	F			
WIRE RANGE 18-14		INSULATION RANGE .110-.150		PRESS NO 365435-5	
REMARKS PRE-FEED AMP-O-LECTRIC					
I.D. PLATE (REF) 461264-1					
AMP INCORPORATED Harrisburg, Pa.					
MINIATURE QUICK CHANGE APPLICATOR SIDE FEED (FASTON TAB)					