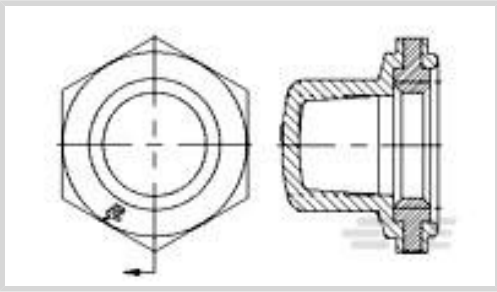




Switches > Switch Seals & Accessories



Switch Accessory Type: **Pushbutton Switch Boot Seal**

Product Shape: **Round**

Primary Product Color: **Black**

Features

Product Type Features

Switch Accessory Type	Pushbutton Switch Boot Seal
Product Shape	Round

Configuration Features

Switch Feedback Type	Non-Tactile
----------------------	-------------

Body Features

Primary Product Color	Black
-----------------------	-------

Mechanical Attachment

Thread Size	1/4 – 40 UNS-2B
-------------	-----------------

Product Compliance

[For compliance documentation, visit the product page on TE.com>](#)

EU RoHS Directive 2011/65/EU	Compliant with Exemptions
EU ELV Directive 2000/53/EC	Compliant with Exemptions
China RoHS 2 Directive MIIT Order No 32, 2016	Restricted Materials Above Threshold
EU REACH Regulation (EC) No. 1907/2006	Current ECHA Candidate List: JUNE 2024 (241) Candidate List Declared Against: JUNE 2024 (241) SVHC > Threshold: Pb (1.42% in Component Part) <b>Article Safe Usage Statements:</b> Do not eat, drink or smoke when using this product. Wash thoroughly after handling. Recycle if possible and dispose of the article by following all applicable governmental regulations relevant to your geographic location.
Halogen Content	Low Halogen - Br, Cl, F, I < 900 ppm per



homogenous material. Also BFR/CFR/PVC  
Free

Solder Process Capability

Not applicable for solder process capability

Product Compliance Disclaimer

This information is provided based on reasonable inquiry of our suppliers and represents our current actual knowledge based on the information they provided. This information is subject to change. The part numbers that TE has identified as EU RoHS compliant have a maximum concentration of 0.1% by weight in homogenous materials for lead, hexavalent chromium, mercury, PBB, PBDE, DBP, BBP, DEHP, DIBP, and 0.01% for cadmium, or qualify for an exemption to these limits as defined in the Annexes of Directive 2011/65/EU (RoHS2). Finished electrical and electronic equipment products will be CE marked as required by Directive 2011/65/EU. Components may not be CE marked. Additionally, the part numbers that TE has identified as EU ELV compliant have a maximum concentration of 0.1% by weight in homogenous materials for lead, hexavalent chromium, and mercury, and 0.01% for cadmium, or qualify for an exemption to these limits as defined in the Annexes of Directive 2000/53/EC (ELV). Regarding the REACH Regulation, the information TE provides on SVHC in articles for this part number is based on the latest European Chemicals Agency (ECHA) ‘Guidance on requirements for substances in articles’ posted at this URL: <https://echa.europa.eu/guidance-documents/guidance-on-reach>

Also in the Series

Alcoswitch FCR

Switch Seals & Accessories(8)

Customers Also Bought

TE Part #211398-1  
CPC RECPT. SIZE 13-7

TE Part #2-487406-4  
FFC,RCPT CONTACT,STD PRESSURE

TE Part #1-52410-0  
PIDG 22-16 SPG SPD 8,NAT

TE Part #3-641208-3  
03P MTA156 HDR ASSY FL ST LF

TE Part #3-640428-2  
02P MTA156 CONN ASSY 22AWG RED

TE Part #1546306-6  
6P .374" DR BARRIER STRIP

TE Part #1825420-1  
TRD13D10WL04 rocker switch

TE Part #2-1419108-5  
RTB14012F



Documents

Product Drawings

BP1440004=Boot, Pushbutton

English

CAD Files

Customer View Model

ENG\_CVM\_CVM\_1825610-1\_B.3d\_igs.zip

English

Customer View Model

ENG\_CVM\_CVM\_1825610-1\_B.3d\_stp.zip

English

Customer View Model

ENG\_CVM\_CVM\_1825610-1\_B.2d\_dxf.zip

English

3D PDF

3D

By downloading the CAD file I accept and agree to the [Terms and Conditions](#) of use.

Datasheets & Catalog Pages

SWITCHES\_CORE\_PROGRAM\_CATALOG

English