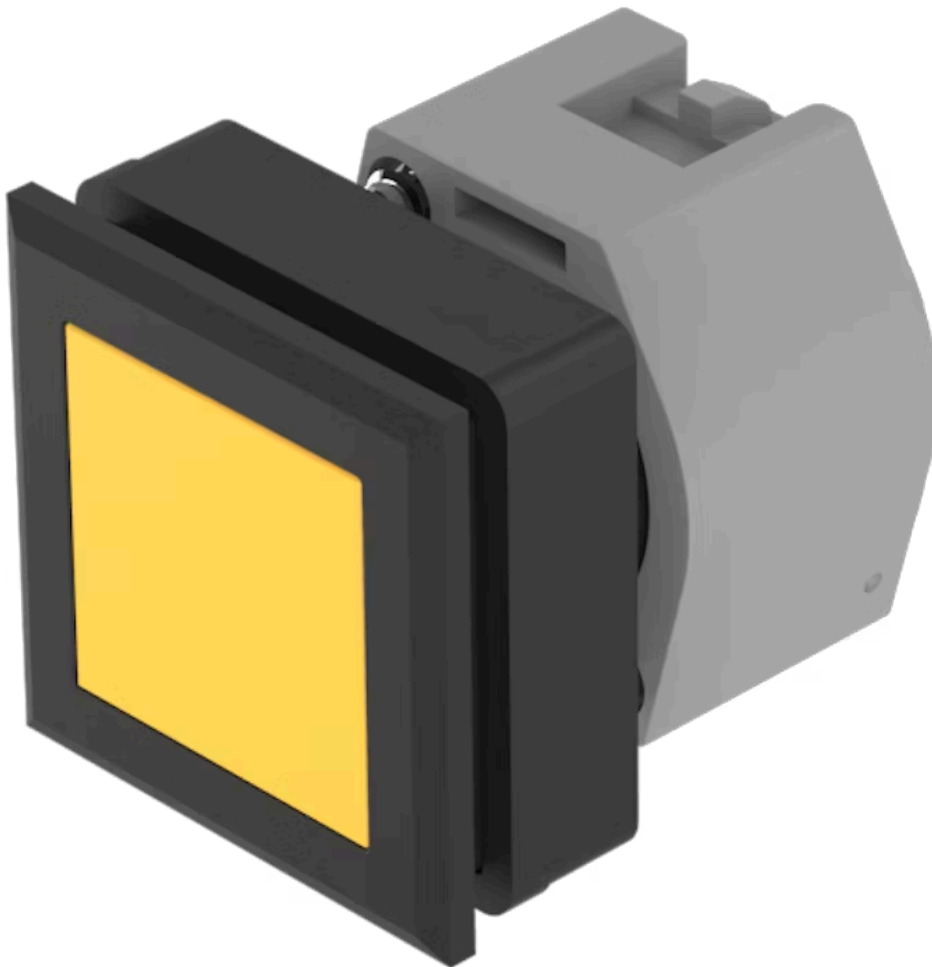


Actuator

704.209.400

Distribution by
DigiKey

DigiKey



<https://digikey.eao.com/p/704.209.400>

Your product:



704.209.400 Actuator

FRONT

Front bezel material:	Plastic
Front dimension:	35 mm x 35 mm
Front bezel colour:	Black
Front form:	square

MOUNTING

Mounting cut-out:	30 mm x 30 mm
Design:	flush

OPERATING-/INDICATION PART

Lens material:	Plastic
Lens shape:	flush
Lens colour:	Yellow
Lens optics:	transparent
Lens illumination:	non illuminative

ELECTRICAL CHARACTERISTICS

Standards:	The switches comply with the "Standards for low-voltage switching devices" DIN EN 60947-1
------------	---

MECHANICAL CHARACTERISTIC

Weight:	0.051 kg
Operating Travel:	ca. 5.8 mm ± 0.2 mm

Switching action: Momentary

Operating force: 6.2 N

Mechanical lifetime: ≤3 Mio. cycles of operation

AMBIENT CONDITION

Storage temperature: – 40 °C ... + 85 °C

IP Protection: IP65 front side

Operating temperature: – 40 °C ... + 55 °C

OTHER

Housing colour: Black

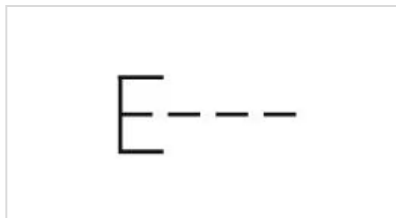
Housing material: Plastic

Short Description: Actuator, 30 mm x 30 mm, 35 mm x 35 mm, flush, non illuminative, Yellow, Plastic, transparent, square, Black, Plastic, Momentary

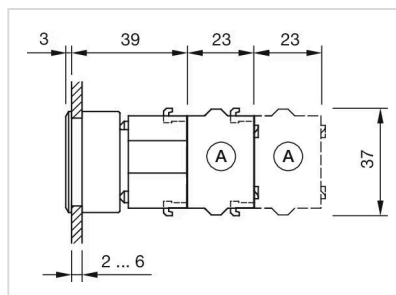
Hints: Max. 3 switching elements can be clipped on

max. number of switching elements: 3

Wiring diagrams:

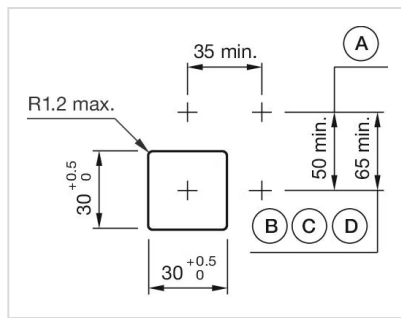


Dimension drawings:



A = Screw terminal

Mounting cut-outs:



A = Screw terminal
 B = Push-in terminal (PIT)
 C = Plug-in terminal 6.3 mm x 0.8 mm
 D = Double plug-in terminal 6.3 mm x 0.8 mm