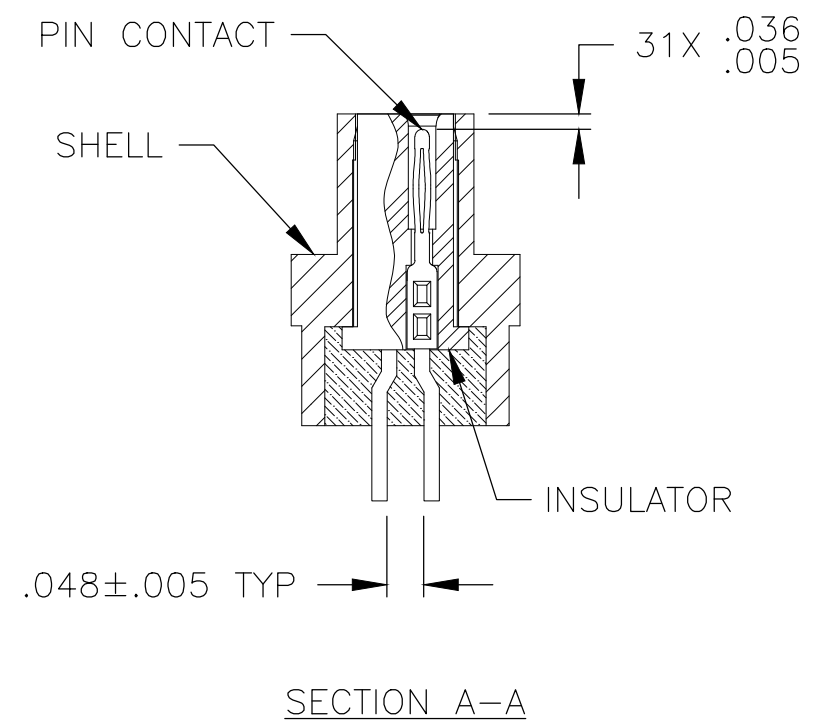
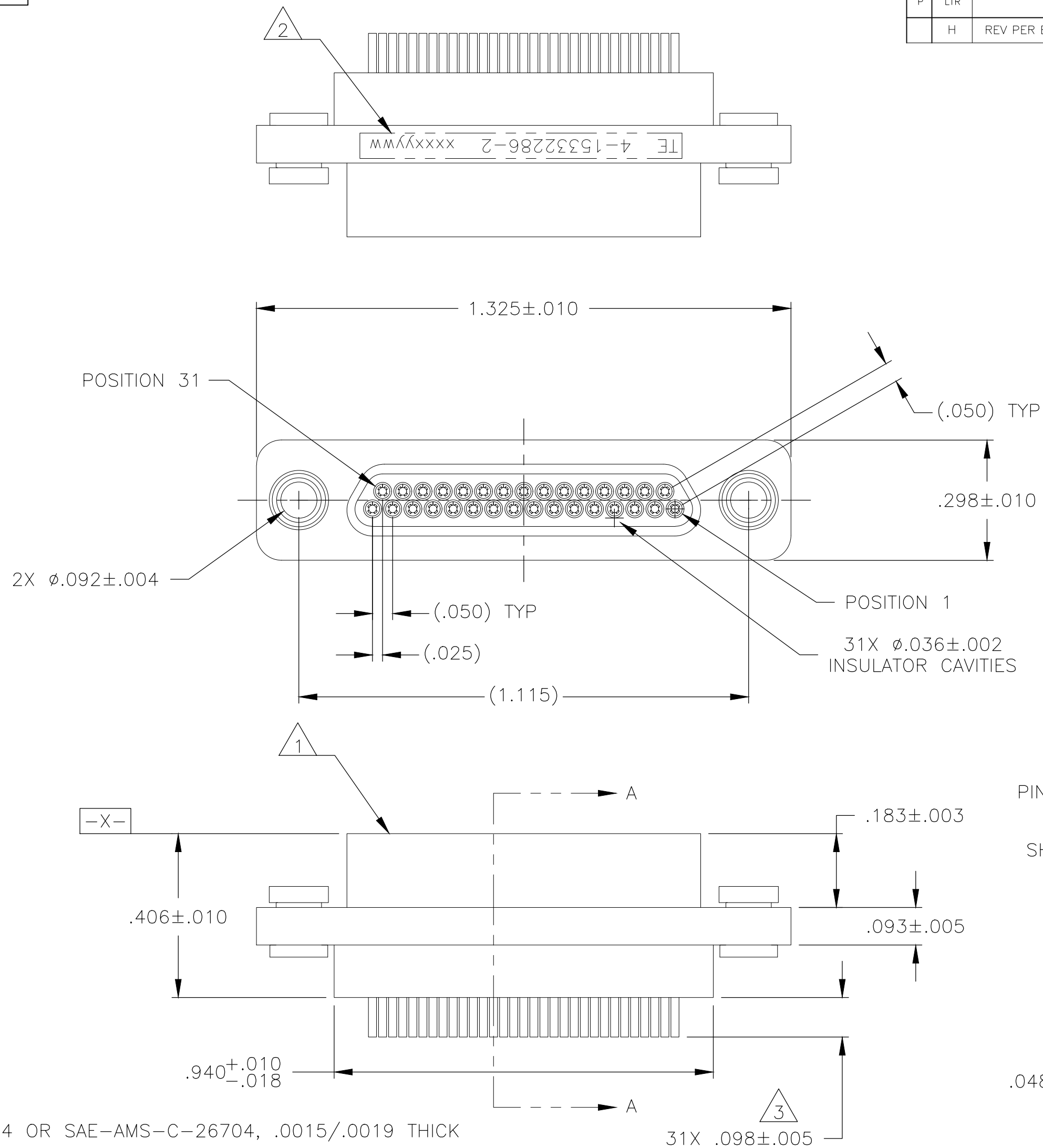
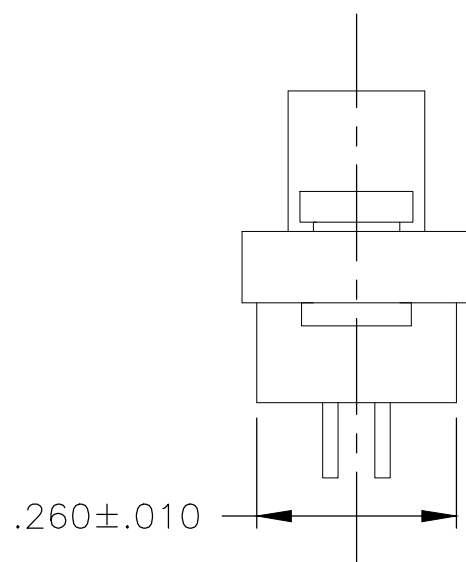


REVISIONS					
P	LTR	DESCRIPTION	DATE	DWN	APVD
	H	REV PER ECO 18-015310	9-26-18	CT	EH




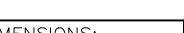
- 1 SHELL MATERIAL: 6061 T6 ALUMINUM, NICKEL PLATED PER SAE-AMS-2404 OR SAE-AMS-C-26704, .0015/.0019 THICK
INSULATOR: GLASS FILLED THERMOPLASTIC
CONTACTS: COPPER ALLOY, GOLD OVER NICKEL
WIRE: 24 AWG, COPPER WITH GOLD OVER NICKEL FINISH

2 MARK PER MEP203-12, CODES B, C & H (SERIAL NUMBERING) ON PRIMARY SURFACE
SERIAL NUMBER IS AS FOLLOWS: XXXXXYYWW
SERIAL NUMBER EXAMPLE: 01021828. WHERE 0102 IS CONSECUTIVE NUMBERING AND
1828 IS PART PRODUCED THE 28th WEEK OF 2018.

3 LEADS ARE TO BE SOLDER DIPPED WITH Sn100. LEADS TO BE DIPPED WITHIN AREA SHOWN. SEE DETAIL Z.
SOLDER MUST CAPTURE OUTER RING OF CRIMP BARREL; SOLDER FILLET FROM WIRE TO CRIMP BARREL REQUIRED.

4 ELECTRICAL REQUIREMENTS:
CURRENT RATING: 3 AMPS
TEMP RATING -55°C TO +125°C
INSULATION RESISTANCE: 5000 MEGOHMS MIN
DWV, SEA LEVEL/ALTITUDE: 600VAC/150 VAC
CONTACT RESISTANCE: 26 MILLIOHMS MAX @ 2.5 AMPS
LOW SIGNAL LEVEL CR: 25 MILLIOHMS

5 ALL DIMENSIONS AND REQUIREMENTS ARE PER MIL-DTL-83513/3

THIS DRAWING IS A CONTROLLED DOCUMENT.			DWN C SCHOLL 15 JUL 16		 TE Connectivity			
			CHK C SCHOLL 15 JUL 16					
DIMENSIONS: INCHES		TOLERANCES UNLESS OTHERWISE SPECIFIED:		APVD C SCHOLL 15 JUL 16		NAME MCKS PLUG ASSY,31 POS,FLOAT MOUNT CUSTOM LEADS WITH TIN SOLDER MDC 094-9505-8001		
		0 PLC ± -		PRODUCT SPEC				
		1 PLC ± -		—				
		2 PLC ± .010		APPLICATION SPEC		SIZE A2		
		3 PLC ± .005		—				
		4 PLC ± -				DRAWING NO C-4-1532286-2		
		ANGLES ± ± 2°						
MATERIAL		FINISH		WEIGHT 0		SCALE 4:1		
SEE NOTES		SEE NOTES		CUSTOMER DRAWING				
						REV H		

4-1532286-2

$$A$$