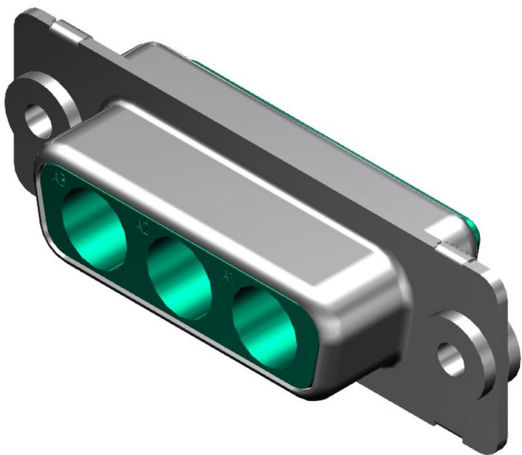




Part Number : [1731070203](#)
Product Description : FCT Mixed Layout D-Sub
Housing, Female, Tin-plated Shell, Float
Mount, 3 Circuits Unloaded, Green Insulator
Series Number : 173107
Status : Active
Product Category : D-Sub Connectors
Engineering Number : FMW3W3S-K121




Documents & Resources

Drawings
[Drawing 1731070203_sd.pdf](#)

3D Models and Design Files
[3D Model 1731070203_stp.zip](#)

Product Environment Compliance

Compliance

GADSL/IMDS	Not Relevant
China RoHS	
EU ELV	Not Relevant
Low-Halogen Status	Not Reviewed per IEC 61249-2-21
REACH SVHC	Not Reviewed per D(2024)4144-DC (27 June 2024)
EU RoHS	Compliant per EU 2015/863

Multiple Part Product Compliance Statements

- Eu RoHS
- REACH SVHC
- Low-Halogen

Multiple Part Industry Compliance Documents

- IPC 1752A Class C
- IPC 1752A Class D

- Molex Product Compliance Declaration
- IEC-62474
- chemSHERPA (xml)

EU RoHS Certificate of Compliance

Part Details

General

Status	Active
Category	D-Sub Connectors
Series	173107
Description	FCT Mixed Layout D-Sub Housing, Female, Tin-plated Shell, Float Mount, 3 Circuits Unloaded, Green Insulator
IP Rating	IP20
Magnetic	Yes
Product Family	FCT D-Sub Connectors
Product Name	FCT Products
Type	Mixed Layout
UPC	889056711890

Electrical

Shielded	Yes
----------	-----

Physical

Circuits (Loaded)	0
Circuits (maximum)	3
Color - Resin	Green
Gender	Female
Material - Resin	PBT
Material - Shell	Steel
Net Weight	6.400/g
Number of Rows	1
Packaging Type	Carton
Panel Mount	Rear
Panel Mount Method	Float

PCB Locator	No
PCB Retention	None
Plating - Shell	Tin
Polarized to Mating Part	Yes
Ports	1
Temperature Range - Operating	-55° to +130°C
Waterproof / Dustproof	No
Waterproof / Dustproof Type	IP20

Mates With / Use With

Mates with Part(s)

Description	Part Number
Mates With	FCT Mixed Layout D-Sub, Size 2, 3W3, Plug

Use with Part(s)

Description	Part Number
Use With	FCT Coaxial, High Power, High Voltage, or Pneumatic Contacts