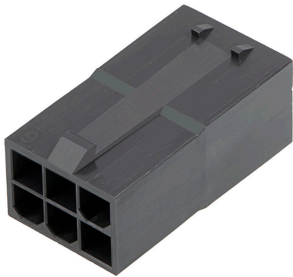




**Part Number :** [1727621012](#)  
**Product Description :** Mini-Fit Sigma Plug Housing, 4.20mm Pitch, Dual Row, UL 94V-0, Glow-Wire Capable, 12 Circuits  
**Series Number :** [172762](#)  
**Status :** Active  
**Product Category :** Connector Housings



## Documents & Resources

### Drawings

[1727621012\\_sd.pdf](#)  
[1727620001-PK-000.pdf](#)

### 3D Models and Design Files

[1727621012\\_stp.zip](#)

### Specifications

[2131370000-AS-000.pdf](#)  
[2029880002-PS-000.pdf](#)  
[2131370000-PS-000.pdf](#)  
[1727180003-TS-000.pdf](#)  
[2131370002-TS-000.pdf](#)

## Product Environment Compliance

### Compliance

GADSL/IMDS	Not Relevant
China RoHS	
EU ELV	Not Relevant
Low-Halogen Status	Not Low-Halogen per IEC 61249-2-21
REACH SVHC	Not Contained per D(2024)4144-DC (27 June 2024)
EU RoHS	Compliant per EU 2015/863

### Multiple Part Product Compliance Statements

- Eu RoHS
- REACH SVHC
- Low-Halogen

## Multiple Part Industry Compliance Documents

- IPC 1752A Class C
- IPC 1752A Class D
- Molex Product Compliance Declaration
- IEC-62474
- chemSHERPA (xml)

## EU RoHS Certificate of Compliance

---

### Part Details

#### General

Status	Active
Category	Connector Housings
Series	172762
Description	Mini-Fit Sigma Plug Housing, 4.20mm Pitch, Dual Row, UL 94V-0, Glow-Wire Capable, 12 Circuits
Application	Power, Wire-to-Board, Wire-to-Wire
Product Name	Mini-Fit Sigma
UPC	193264446193

#### Agency

UL	E29179
----	--------

#### Physical

Circuits (maximum)	12
Color - Resin	Black
Flammability	94V-0
Gender	Plug
Glow-Wire Capable	Yes
Lock to Mating Part	Yes
Material - Resin	Nylon
Net Weight	4.020/g
Number of Rows	2
Packaging Type	Bag
Panel Mount	No
Pitch - Mating Interface	4.20mm

Pitch - Termination Interface	4.20mm
Polarized to Mating Part	Yes
Temperature Range - Operating	-40° to +105°C

## Solder Process Data

Lead-Free Process Capability	N/A
------------------------------	-----

---

## Mates With / Use With

### Mates with Part(s)

Description	Part Number
Mini-Fit Sigma Receptacle Housing, 4.20mm Pitch, Dual Row, Glow-Wire Capable, 12 Circuits	<u>1727081012</u>

### Use with Part(s)

Description	Part Number
Mini-Fit Sigma Terminal Position Assurance (TPA) Retainer, 4.20mm Pitch, UL 94V-0, Glow-Wire Capable, 6 Circuits, Natural	<u>1727092006</u>
Mini-Fit TPA2/Sigma Male Crimp Terminals	<u>172765</u>
Mini-Fit TPA2/Sigma Male Crimp Terminals	<u>203070</u>