

Actuator

704.029.7

Distribution by
DigiKey

DigiKey



<https://digikey.eao.com/p/704.029.7>

Your product:



704.029.7 Actuator

FRONT

Front dimension:	Ø 29 mm
Front bezel material:	Plastic
Front bezel colour:	Black
Front form:	round

MOUNTING

Design:	raised
---------	--------

OPERATING-/INDICATION PART

Lens optics:	transparent
Lens material:	Plastic
Lens shape:	flush
Lens colour:	Colourless
Lens illumination:	illuminative

ELECTRICAL CHARACTERISTICS

Standards:	The switches comply with the "Standards for low-voltage switching devices" DIN EN 60947-1
------------	---

MECHANICAL CHARACTERISTIC

Terminal:	Screw terminal
Operating force:	8 N
Weight:	0.056 kg

Switching action:	Momentary
Operating Travel:	ca. 5.8 mm ± 0.2 mm
Mechanical lifetime:	≤3 Mio. cycles of operation

AMBIENT CONDITION

IP Protection:	IP65 front side
Storage temperature:	– 40 °C ... + 85 °C
Operating temperature:	– 40 °C ... + 55 °C

OTHER

Short Description: Actuator, Ø 29 mm, flush, illuminative, Colourless, Plastic, transparent, round, Black, Plastic, Momentary, Screw terminal

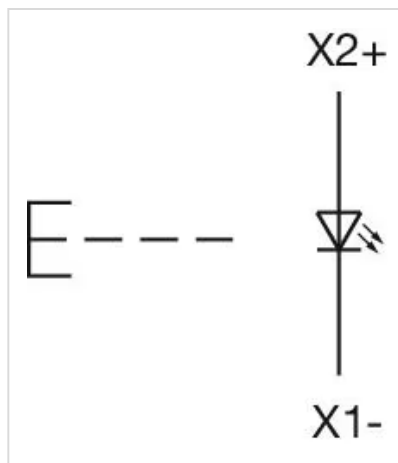
Hints: Frontring with protective cover to be mounted with a torque of 0.4 Nm onto actuator, Max. 3 switching elements can be clipped on

max. number of switching elements: 3

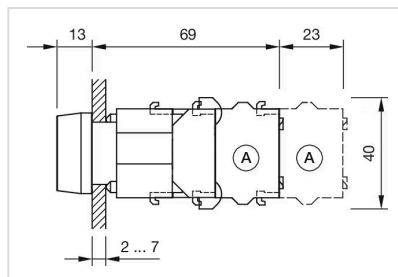
Housing material: Plastic

Housing colour: Grey

Wiring diagrams:

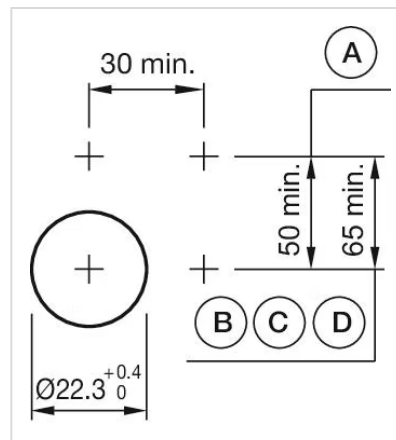


Dimension drawings:



A = Screw terminal

Mounting cut-outs:



A = Screw terminal

B = Push-in terminal (PIT)

C = Plug-in terminal 6.3 mm x 0.8 mm

D = Double plug-in terminal 6.3 mm x 0.8 mm