



[My Cart](#) | [My Part Lists](#) | [Sign In/Register](#)

[English \(Change\)](#)

Have a Question?
Chat with a Product
Information Specialist



What can we help you find?



[Products](#)

[Industries](#)

[Resources](#)

[About TE](#)

[My Account](#)

[Innovation](#)

[Support Center](#)

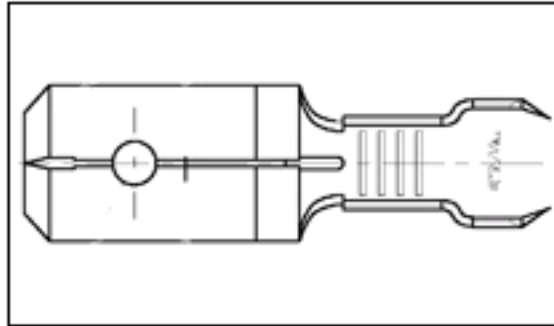
[Home](#) > [Products](#) > [Terminals & Splices](#) > [Product Feature Selector](#) > [Product Details](#)

60141-2 Product Details

[Share](#)

[Print](#)

[Email](#)



60141-2

TE Internal Number: 60141-2

[Active](#)

[View 3D PDF](#)

Quick Disconnect Tabs, Tab Adapters & Tab Caps

[Always EU RoHS/ELV Compliant \(Statement of Compliance\)](#)

Product Highlights:

- Terminal
- Terminal Type = Tab
- Tab Type = Wire Crimp
- Uninsulated
- Mating Area Interface Dimensions = 6.35 x 0.81 mm

[View all Features](#)

Quick Links

- ▶ [Pricing & Availability](#)
- ▶ [Search for Tooling](#)
- ▶ [Product Feature Selector](#)
- ▶ [Contact Us About This Product](#)

Documentation & Additional Information

Product Drawings:

- [TAB, FASTON, .250 SERIES \(PDF, English\)](#)

Catalog Pages/Data Sheets:

- None Available

Product Specifications:

- None Available

Application Specifications:

- None Available

Instruction Sheets:

- None Available

CAD Files: (CAD Format & Compression Information)

- [2D Drawing \(DXF, Version G\)](#)
- [3D Model \(IGES, Version G\)](#)
- [3D Model \(STEP, Version G\)](#)

Additional Information:

- [Product Line Information](#)

Related Products:

- [Tooling](#)

[List all Documents](#)

Product Features (Please use the Product Drawing for all design activity)

Product Type Features:

- [Product Type](#) = Terminal
- [Terminal Type](#) = Tab
- [Insulation](#) = No
- [Finish](#) = Tin
- [Wire/Cable Type](#) = Regular Wire
- [Mount Angle](#) = Straight
- [Insulation Support](#) = Without

Dimensions:

- [Mating Area Interface Dimensions \(mm \[in\]\)](#) = 6.35 x 0.81 [.250 x .032]
- [Insulation Diameter \(mm \[in\]\)](#) = 2.03-3.05 [.080-.120]

Body Features:

- [Tab Type](#) = Wire Crimp
- [Material](#) = Brass
- [Wire Range \(mm \[AWG\]\)](#) = 0.30-0.90² [22-18]
- [Stud Hole](#) = Without

Industry Standards:

- [RoHS/ELV Compliance](#) = RoHS compliant, ELV compliant
- [Lead Free Solder Processes](#) = Not relevant for lead free process
- [RoHS/ELV Compliance History](#) = Always was RoHS compliant

Packaging Features:

- [Packaging Method](#) = Loose Piece

Other:

- [Brand](#) = AMP

Corporate Information

[About TE](#)

[Investors](#)

[News Room](#)

[Supplier Portal](#)

[Careers](#)

[Terms & Conditions](#)

[Privacy Policy](#)

Quick Links

[Distributor Inventory](#)

[Product Cross Reference](#)

[Documents & Drawings](#)

[Product Compliance Support Center](#)

[Site Map](#)

Customer Support

[Email or Chat With Us](#)

[Find a Phone Number](#)

[Knowledge Base](#)

[Manage Your Account](#)

Keep Me Informed

Receive TE News, Events & Technology Updates

Enter your email address

