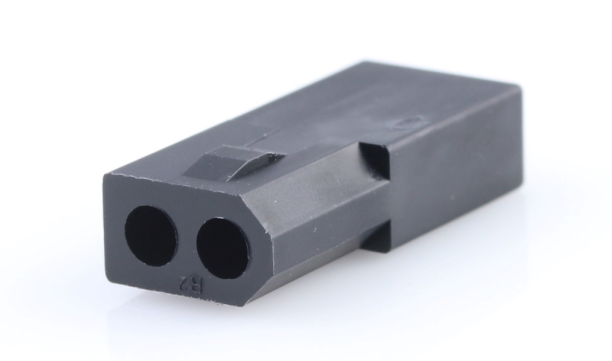




**Part Number :** [03066023](#)  
**Product Description :** 1.57mm Diameter  
Standard .062" Pin and Socket Receptacle  
Housing, 2 Circuits, without Mounting Ears,  
Black  
**Series Number :** 1625  
**Status :** Active  
**Product Category :** Connector Housings  
**Engineering Number :** 162502R1BK



## Documents & Resources


**Drawings**  
[Drawing 003066023\\_sd.pdf](#)

**3D Models and Design Files**  
[3D Model 003066023\\_stp.zip](#)

**Specifications**  
[Packaging Specification PK-1625-003-001.pdf](#)  
[Product Specification PS-02-06-001.pdf](#)

## Product Environment Compliance

### Compliance

GADSL/IMDS	Not Relevant
China RoHS	
EU ELV	Not Relevant
Low-Halogen Status	Low-Halogen per IEC 61249-2-21
REACH SVHC	Not Contained per D(2024)4144-DC (27 June 2024)
EU RoHS	Compliant per EU 2015/863

Multiple Part Product Compliance Statements  
- Eu RoHS  
- REACH SVHC  
- Low-Halogen

## Multiple Part Industry Compliance Documents

- IPC 1752A Class C
- IPC 1752A Class D
- Molex Product Compliance Declaration
- IEC-62474
- chemSHERPA (xml)

## EU RoHS Certificate of Compliance

---

### Part Details

#### General

Status	Active
Category	Connector Housings
Series	1625
Description	1.57mm Diameter Standard .062" Pin and Socket Receptacle Housing, 2 Circuits, without Mounting Ears, Black
Application	Power, Wire-to-Wire
Comments	Polarized to Mating Part
Product Family	Standard .062"+ and Standard .062" Pin and Socket Connector Systems
Product Name	Standard .062"
UPC	800753615335

#### Agency

CSA	LR19980
UL	E29179

#### Physical

Breakaway	No
Circuits Detail	1x2
Circuits (maximum)	2
Color - Resin	Black
Flammability	94V-2
Gender	Receptacle
Glow-Wire Capable	No
Keying to Mating Part	None

Lock to Mating Part	Yes
Material - Resin	Nylon
Net Weight	0.699/g
Number of Rows	1
Packaging Type	Bag
Panel Mount	No
Pitch - Mating Interface	3.68mm
Pitch - Termination Interface	3.68mm
Polarized to Mating Part	Yes
Stackable	No
Temperature Range - Operating	-40° to +105°C

## Solder Process Data

Lead-Free Process Capability	N/A
------------------------------	-----

---

## Mates With / Use With

### Mates with Part(s)

Description	Part Number
1.57mm Diameter Standard .062" Pin and Socket Receptacle Housing, 2 Circuits, with Pre-bent Mounting Ears, Natural	<u>03061022</u>
1.57mm Diameter Standard .062" Pin and Socket Receptacle Housing, 2 Circuits, without Mounting Ears, Natural	<u>03061023</u>

### Use with Part(s)

Description	Part Number
Standard .062" Pin and Socket Female Crimp Terminals	<u>1561</u>
Standard .062" Pin and Socket Female Crimp Terminals	<u>1855</u>
Standard .062" Pin and Socket Male Crimp Terminals	<u>1560</u>
Standard .062" Pin and Socket Male Crimp Terminals	<u>1854</u>
Standard .062" Pin and Socket Male PC Tail Terminals	<u>1778</u>

