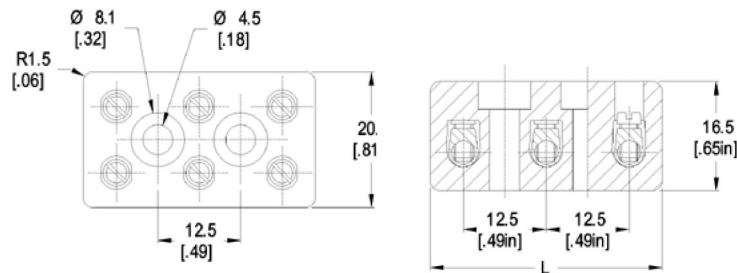


Series 400-B

Type 4002-B /4003-B

12.5 mm spacing • 2 and 3 poles



Dimensions: mm (in.) When locating connector, allow 0.5 mm clearance around it for process-induced variations.

Length of Connector (L) L = 35 (1.38) 2 pole / 50 (1.97) 3 pole

DESCRIPTION

Recommended mounting hardware: M4 cheese head screw
 (#8-32 fillister head screw)

Ceramic Terminal Block
 With Clamping Screws
 With Mounting Holes

TECHNICAL DATA

Center to Center Spacing: 12.5 mm (0.492 in.)
 Wire Stripping length: 6.5 mm (0.26 in.)
 Nominal Cross Section: 2.5 mm² (3874 mils²)
 (maximum load at 40°C (104°F) ambient temperature)
 Recommended operating Voltage: 400 V
 Recommended operating Current: 26A
 Recommended operating Wire Range: 26-10 AWG
 Screw Tightening Torque: max 0.5 Nm (4.5 lbfin.)

MATERIAL

MOLDING: Glazed porcelain KER 111, DIN 40685, white
 TEMPERATURE LIMITS:
 Upper Temperature Limit: 200°C (392°F)
 Terminal Body: nickel plated brass
 Screw: yellow chromate passivated, zinc plated, steel, M4

OPTIONS

See how to order: If more than one option is required, please separate with a dash (-)

BS: Copper alloy screws
 G05: Gold Plating (5 micro inches)
 G30: Gold Plating (30 micro inches)
 S30: Silver Plating (30 micro inches)
 Note: Plated component: terminal body

HOW TO ORDER

POLES:					
2 poles: 2					
3 poles: 3					
OPTIONS:					
BS, G05, G30, S30					
400		-B		-	

