

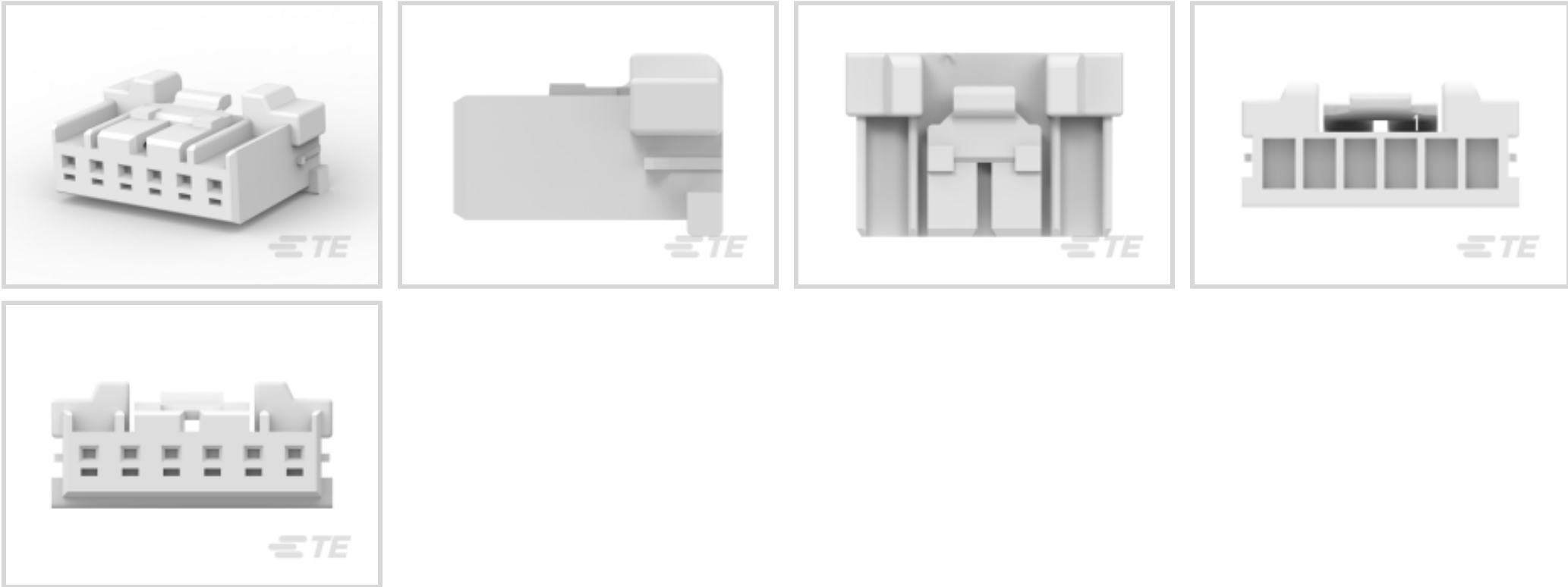


GRACE INERTIA 2.5

TE Internal #: 1747066-6
Housing, Plug, Wire-to-Board, 6 Position, 2.5 mm [.098 in]
Centerline, Crimp, 1 Row, Natural, Mating Retention, Wire & Cable,
GRACE INERTIA 2.5

[View on TE.com >](#)

Connectors > PCB Connectors > Wire-to-Board Connectors > Wire-to-Board Connector Assemblies & Housings



Connector Product Type: **Housing**
Connector & Housing Type: **Plug**
Connector System: **Wire-to-Board**
Number of Positions: **6**
Centerline (Pitch): **2.5 mm [.098 in]**

Features

Product Type Features

| | |
|-----------------------------------|---------------|
| Connector Product Type | Housing |
| Connector & Housing Type | Plug |
| Connector System | Wire-to-Board |
| Sealable | No |
| Connector & Contact Terminates To | Wire & Cable |

Configuration Features

| | |
|---------------------|---|
| Number of Positions | 6 |
| Number of Rows | 1 |

Electrical Characteristics

| | |
|-------------------|--------|
| Operating Voltage | 50 VAC |
|-------------------|--------|

Body Features

| | |
|-----------------------|---------|
| Primary Product Color | Natural |
|-----------------------|---------|

Contact Features

| | |
|--|--|
| | |
|--|--|



| | |
|-----------------------|--------------|
| Contact Layout | Inline |
| Contact Type | Pin |
| Contact Base Material | Copper Alloy |

Termination Features

| | |
|------------------------------------|-------|
| Termination Method to Wire & Cable | Crimp |
|------------------------------------|-------|

Mechanical Attachment

| | |
|-------------------------|----------------------------|
| Strain Relief | Without |
| Panel Mount Feature | Without |
| PCB Mount Retention | Without |
| Mating Retention Type | Latch |
| Mating Retention | With |
| Connector Mounting Type | Cable Mount (Free-Hanging) |

Housing Features

| | |
|-----------------------------|-----------------|
| Housing Entry Configuration | Both Ends Open |
| Housing Material | Nylon 6/6 GF |
| Centerline (Pitch) | 2.5 mm[.098 in] |

Dimensions

| | |
|------------------|------------------|
| Connector Length | 17.1 mm[.672 in] |
| Connector Height | 7.7 mm[.303 in] |

Usage Conditions

| | |
|-----------------------------|----------------------------|
| Operating Temperature Range | -30 – 105 °C[-22 – 221 °F] |
|-----------------------------|----------------------------|

Operation/Application

| | |
|---------------------|----------------|
| Circuit Application | Power & Signal |
|---------------------|----------------|

Industry Standards

| | |
|------------------------|-------------------------------|
| Glow Wire Rating | Standard Part - Not Glow Wire |
| UL Flammability Rating | UL 94V-0 |

Packaging Features

| | |
|--------------------|-----|
| Packaging Quantity | 400 |
| Packaging Method | Bag |

Product Compliance

For compliance documentation, visit the product page on [TE.com](#)>



| | |
|---|---|
| EU RoHS Directive 2011/65/EU | Compliant |
| EU ELV Directive 2000/53/EC | Compliant |
| China RoHS 2 Directive MIIT Order No 32, 2016 | No Restricted Materials Above Threshold |
| EU REACH Regulation (EC) No. 1907/2006 | Current ECHA Candidate List: JUNE 2024 (241) Candidate List Declared Against: JUNE 2024 (241) Does not contain REACH SVHC |
| Halogen Content | Not Low Halogen - contains Br or Cl > 900 ppm. |
| Solder Process Capability | Not applicable for solder process capability |

Product Compliance Disclaimer

This information is provided based on reasonable inquiry of our suppliers and represents our current actual knowledge based on the information they provided. This information is subject to change. The part numbers that TE has identified as EU RoHS compliant have a maximum concentration of 0.1% by weight in homogenous materials for lead, hexavalent chromium, mercury, PBB, PBDE, DBP, BBP, DEHP, DIBP, and 0.01% for cadmium, or qualify for an exemption to these limits as defined in the Annexes of Directive 2011/65/EU (RoHS2). Finished electrical and electronic equipment products will be CE marked as required by Directive 2011/65/EU. Components may not be CE marked. Additionally, the part numbers that TE has identified as EU ELV compliant have a maximum concentration of 0.1% by weight in homogenous materials for lead, hexavalent chromium, and mercury, and 0.01% for cadmium, or qualify for an exemption to these limits as defined in the Annexes of Directive 2000/53/EC (ELV). Regarding the REACH Regulation, the information TE provides on SVHC in articles for this part number is based on the latest European Chemicals Agency (ECHA) 'Guidance on requirements for substances in articles' posted at this URL: <https://echa.europa.eu/guidance-documents/guidance-on-reach>

Compatible Parts



TE Part # 6-1747072-6
GRACE INERTIA CONN 2.5 ON TAPE HDR 6P RE



TE Part # CAT-G7534A-R2435
Sig GRACE INERTIA Receptacle



TE Part # 1-1747067-6
GRACE INERTIA CONN 2.5 HDR ASSY 6P RED



TE Part # 1747067-6
GRACE INERTIA CONN 2.5 HDR ASSY 6P NATUR



TE Part # 7-1747072-6
GRACE INERTIA CONN 2.5 ON TAPE HDR 6P BL



TE Part # 5-1747072-6
GRACE INERTIA CONN 2.5 ON TAPE HDR 6P NA



TE Part # 1871843-6
GIC 2.5 HDR ASSY TIN VERSION 6P

Also in the Series | GRACE INERTIA 2.5



Connector Contacts(6)



Connector Hardware(7)



PCB Headers & Receptacles(138)



Rectangular Connector Housings(49)



Rectangular Power Connectors(35)



Wire-to-Board Connector Assemblies & Housings(46)

Customers Also Bought



TE Part #178803-3
DYNAMIC D3100D TAB HSG PM 6P



TE Part #1-917807-3
DYNAMIC D-5200M REC HSG 6P X-X



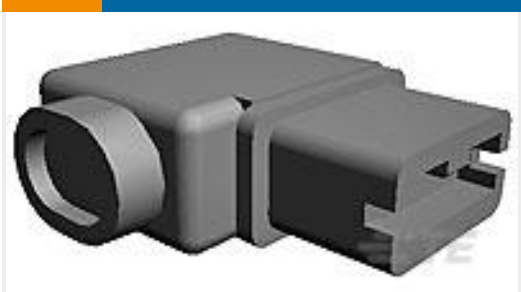
TE Part #1-1318120-3
DYNAMIC D-2100 REC HSG 3P



TE Part #DT04-2P-E005
REC, 2P, BLK, N, CAP



TE Part #179955-2
DYNAMIC D-5 REC CONT. S FORM.



TE Part #176497-1
POSITIVE LOCK .250 Hsg (6.3 MM) V2



TE Part #175057-1
250 PL EX FLAG REC. 18-12AWG PTBR



TE Part #1-1827864-2
DYNAMIC 1200D REC HSG 4P X BLACK



TE Part #1-1376477-2
2.5MM PITCH SIGNAL MATE CONN



TE Part #3-1971030-4
4POS Plug Housing for GIC 2.0 EV Series

Documents



Product Drawings

GRACE INERTIA CONN 2.5 PLUG HSG 6P NATUR

English

CAD Files

3D PDF

3D

Customer View Model

ENG_CVM_CVM_1747066-6_E1.2d_dxf.zip

English

Customer View Model

ENG_CVM_CVM_1747066-6_E1.3d_igs.zip

English

Customer View Model

ENG_CVM_CVM_1747066-6_E1.3d_stp.zip

English

By downloading the CAD file I accept and agree to the [Terms and Conditions](#) of use.

Product Specifications

Application Specification

English