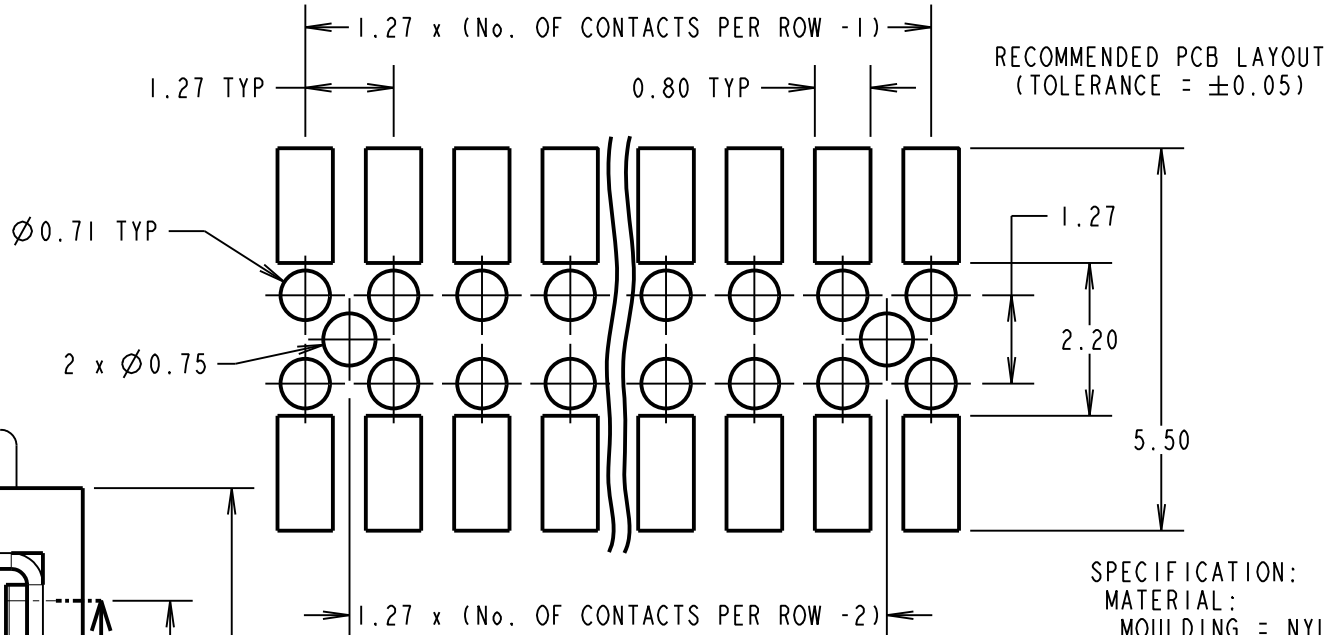
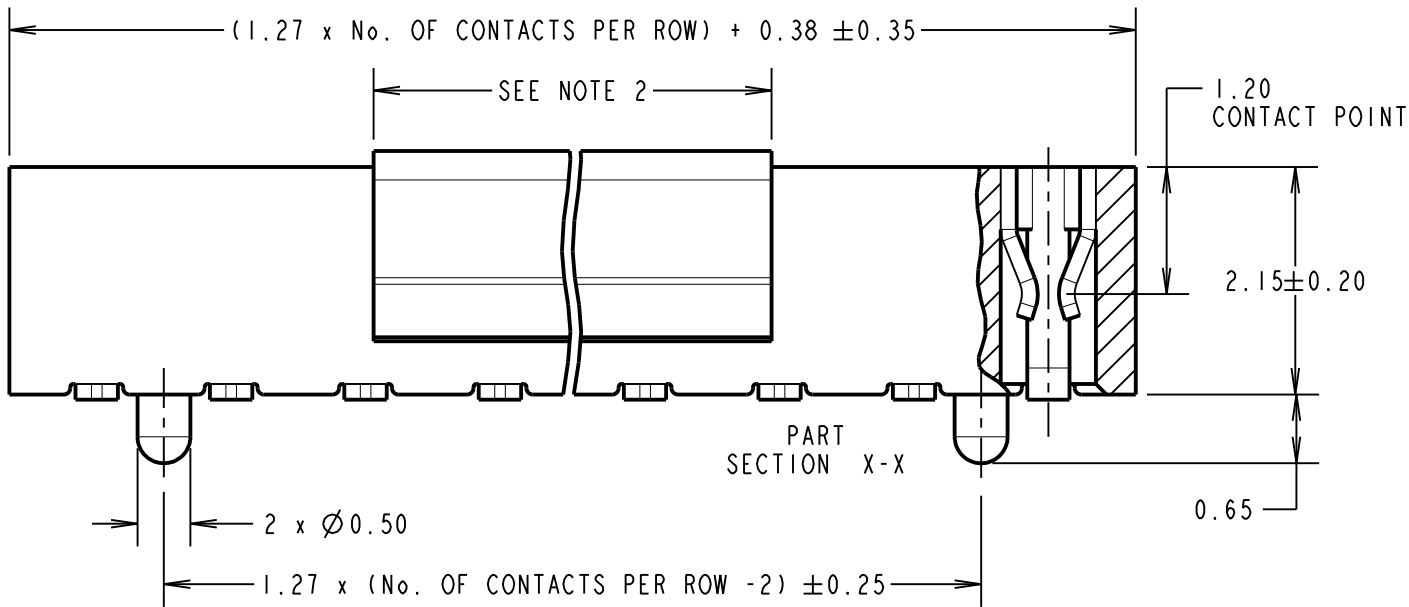
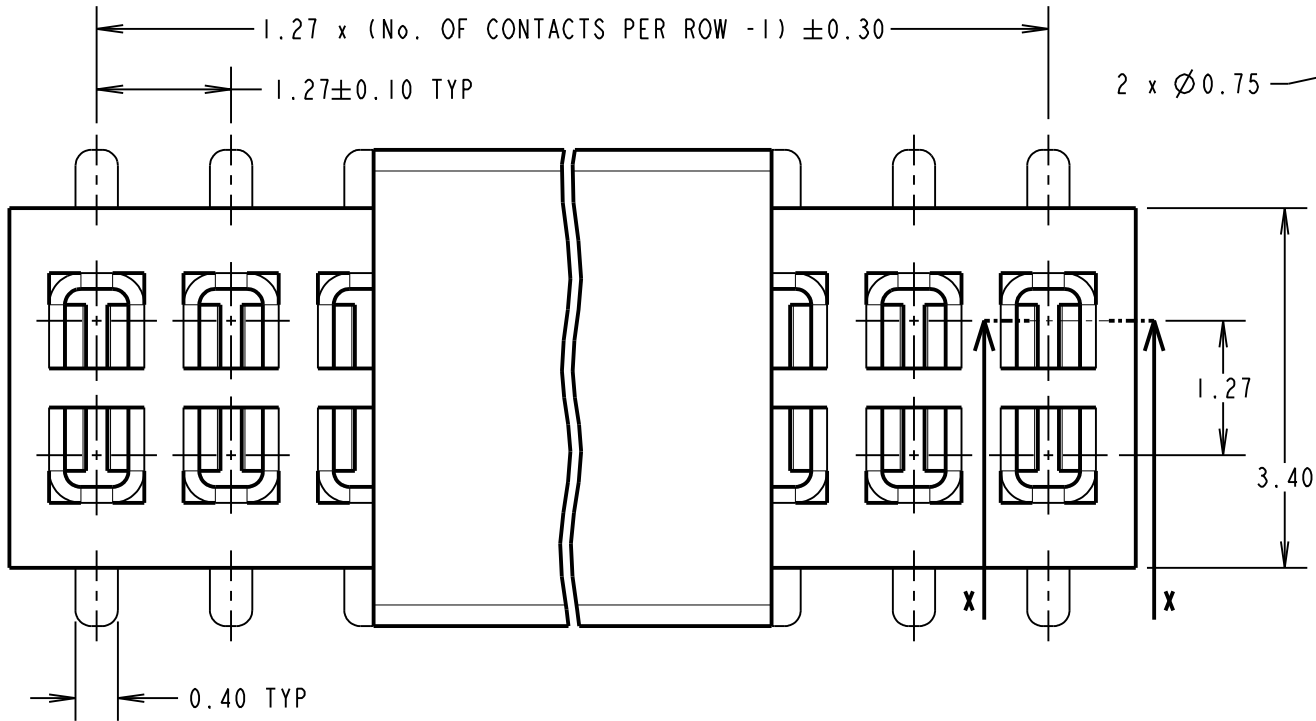


Customer Information Sheet

DRAWING No.: M50-315XX42P SHEET 2 OF 2 IF IN DOUBT - ASK (C) NOT TO SCALE THIRD ANGLE PROJECTION ALL DIMENSIONS IN mm

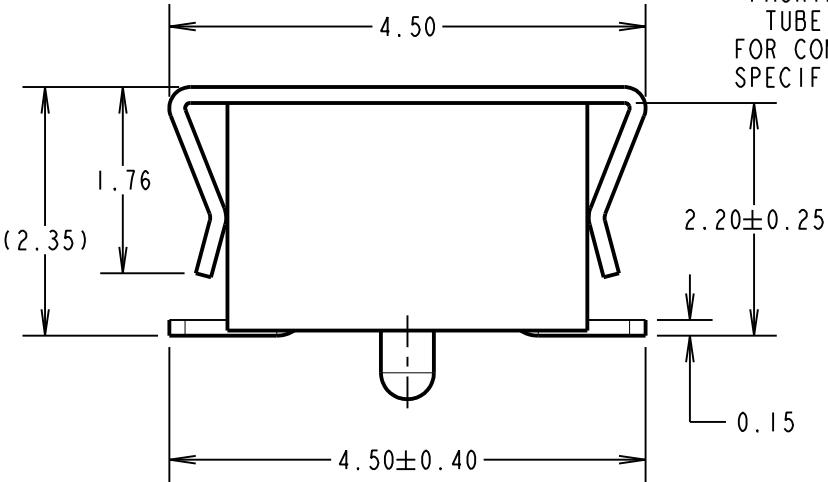
OBSOLETE
No. of contacts per row = 16 to 19, 21,
23, 24, 26 to 29, 31 to 40
Last Time Buy = 15th June 2018



RECOMMENDED PCB LAYOUT
(TOLERANCE = ± 0.05)

SPECIFICATION:
MATERIAL:
MOULDING = NYLON-6T, UL94V-0, BLACK
CONTACTS = PHOSPHOR BRONZE
FINISH:
CONTACTS = 1.27μ NICKEL ALL OVER,
GOLD FLASH ON CONTACT AREA,
 2.54μ 100% TIN ON TAILS
ELECTRICAL:
CURRENT RATING = 1A
CONTACT RESISTANCE = $20\text{m}\Omega$ MAX
INSULATION RESISTANCE = $1000\text{M}\Omega$ MIN
DIELECTRIC WITHSTANDING = 500V AC FOR ONE MINUTE
MECHANICAL:
DURABILITY = 300 CYCLES MIN
INSERTION FORCE = 1.5N MAX PER CONTACT
WITHDRAWAL FORCE = 0.2N MIN PER CONTACT
ENVIRONMENTAL:
TEMPERATURE RANGE = -40°C TO $+105^\circ\text{C}$
PACKING:
TUBE
FOR COMPLETE SPECIFICATION, SEE COMPONENT
SPECIFICATION C029XX (LATEST ISSUE)

ORDER CODE
M50-315XX42P
No. OF CONTACTS PER ROW: **03 to 15, 20, 22, 25, 30**
FINISH: **42 = GOLD FLASH + 100% TIN OVER NICKEL**



NOTE:
1. ALL TOLERANCES ARE ± 0.15 UNLESS OTHERWISE STATED.
2. PICK AND PLACE CAP LENGTH = 4.20mm FOR 03 TO 05 CONTACTS PER ROW,
6.90mm FOR 06 TO 40 CONTACTS PER ROW.

HARWIN
www.harwin.com
technical@harwin.com

THIS DRAWING AND ANY
INFORMATION OR DESCRIPTIVE
MATTER SET OUT HEREON ARE
CONFIDENTIAL AND COPYRIGHT
PROPERTY OF THE HARWIN
GROUP AND MUST NOT BE
DISCLOSED, LOANED, COPIED
OR USED FOR MANUFACTURING,
TENDERING OR FOR ANY
OTHER PURPOSE WITHOUT
THEIR WRITTEN PERMISSION.

TOLERANCES
X = $\pm 1\text{mm}$
X.X = $\pm 0.50\text{mm}$
X.XX = $\pm 0.10\text{mm}$
X.XXX = $\pm 0.01\text{mm}$
ANGLES = $\pm 5^\circ$
UNLESS STATED

MATERIAL:
SEE ABOVE
FINISH: SEE ABOVE
S/AREA: mm²

TITLE:
1.27mm PITCH DIL SMT VERT.
LOW-PROFILE SOCKET ASSY (P&P)
DRAWING NUMBER:
M50-315XX42P
SHT 2 OF 2

MSP	10	08.08.16	13112
NAME	ISS.	DATE	C/NOTE
APPROVED:		M.PERREN	
CHECKED:		S.BENNETT	
DRAWN:		J.EVANS	
CUSTOMER REF.:			
ASSEMBLY DRG:			

Mouser Electronics

Authorized Distributor

Click to View Pricing, Inventory, Delivery & Lifecycle Information:

Harwin:

[M50-3152542P](#) [M50-3151042P](#) [M50-3150442P](#)