

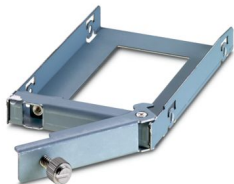
BL 3000/7000 SATA TRAY - Removable hard drive tray



2400026
<https://www.phoenixcontact.com/us/products/2400026>

Please be informed that the data shown in this PDF document is generated from our online catalog. Please find the complete data in the user documentation. Our general terms of use for downloads are valid.

2.5" SATA tray kit for Basicline 3000 and 7000 industrial PC



Product description

Removable hard drive tray for IPC

Commercial data

Item number	2400026
Packing unit	1 pc
Minimum order quantity	1 pc
Sales key	NULL
Product key	DRBABZ
GTIN	4046356954389
Weight per piece (including packing)	647.185 g
Weight per piece (excluding packing)	647.185 g
Customs tariff number	84733080
Country of origin	TW

BL 3000/7000 SATA TRAY - Removable hard drive tray



2400026
<https://www.phoenixcontact.com/us/products/2400026>

Technical data

Notes

Note on application	
Note on application	Only for industrial use

Product properties

Product type	Mounting material
--------------	-------------------

Mounting

Thread type	()
-------------	----

BL 3000/7000 SATA TRAY - Removable hard drive tray



2400026

<https://www.phoenixcontact.com/us/products/2400026>

Classifications

ECLASS

ECLASS-11.0	19200192
ECLASS-12.0	19200192
ECLASS-13.0	19200192

ETIM

ETIM 9.0	EC002584
----------	----------

UNSPSC

UNSPSC 21.0	39121400
-------------	----------

BL 3000/7000 SATA TRAY - Removable hard drive tray



2400026
<https://www.phoenixcontact.com/us/products/2400026>

Environmental product compliance

EU RoHS	
Fulfills EU RoHS substance requirements	Yes, No exemptions
EU REACH SVHC	
REACH candidate substance (CAS No.)	No substance above 0.1 wt%

Phoenix Contact 2024 © - all rights reserved
<https://www.phoenixcontact.com>

Phoenix Contact USA
586 Fulling Mill Road
Middletown, PA 17057, United States
(+717) 944-1300
info@phoenixcon.com