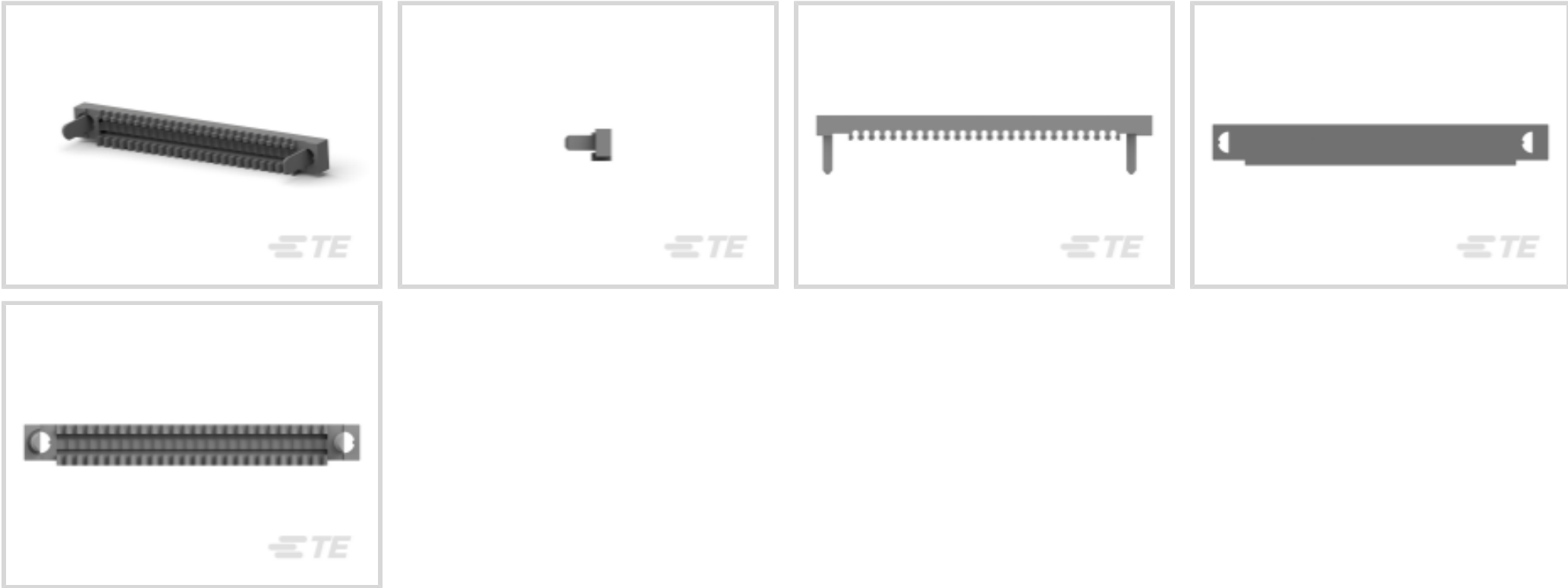




Connectors > Connector Accessories > Connector Caps & Covers



Connector Cover Type: **Terminating Cover**

Number of Positions: **50**

Operating Temperature (Max): **105 °C [221 °F]**

Operating Temperature Range: **-55 – 105 °C [-67 – 221 °F]**

Features

Product Type Features

Connector Cover Type	Terminating Cover
----------------------	-------------------

Configuration Features

Number of Positions	50
---------------------	----

Housing Features

Compatible With Connector Shape	D-Shaped
---------------------------------	----------

Usage Conditions

Operating Temperature (Max)	105 °C[221 °F]
Operating Temperature Range	-55 – 105 °C[-67 – 221 °F]

Industry Standards

UL Flammability Rating	UL 94V-0
------------------------	----------

Packaging Features

Packaging Quantity	1
Packaging Method	Package

Product Compliance

[For compliance documentation, visit the product page on TE.com>](#)



EU RoHS Directive 2011/65/EU	Compliant
EU ELV Directive 2000/53/EC	Compliant
China RoHS 2 Directive MIIT Order No 32, 2016	No Restricted Materials Above Threshold
EU REACH Regulation (EC) No. 1907/2006	Current ECHA Candidate List: JUNE 2024 (241) Candidate List Declared Against: JUNE 2024 (241) Does not contain REACH SVHC
Halogen Content	Not Low Halogen - contains Br or Cl > 900 ppm.
Solder Process Capability	Not reviewed for solder process capability

Product Compliance Disclaimer

This information is provided based on reasonable inquiry of our suppliers and represents our current actual knowledge based on the information they provided. This information is subject to change. The part numbers that TE has identified as EU RoHS compliant have a maximum concentration of 0.1% by weight in homogenous materials for lead, hexavalent chromium, mercury, PBB, PBDE, DBP, BBP, DEHP, DIBP, and 0.01% for cadmium, or qualify for an exemption to these limits as defined in the Annexes of Directive 2011/65/EU (RoHS2). Finished electrical and electronic equipment products will be CE marked as required by Directive 2011/65/EU. Components may not be CE marked. Additionally, the part numbers that TE has identified as EU ELV compliant have a maximum concentration of 0.1% by weight in homogenous materials for lead, hexavalent chromium, and mercury, and 0.01% for cadmium, or qualify for an exemption to these limits as defined in the Annexes of Directive 2000/53/EC (ELV). Regarding the REACH Regulation, the information TE provides on SVHC in articles for this part number is based on the latest European Chemicals Agency (ECHA) 'Guidance on requirements for substances in articles' posted at this URL: <https://echa.europa.eu/guidance-documents/guidance-on-reach>

Compatible Parts



Also in the Series | [AMPLIMITE 0.50 Series](#)



Connector Backshells(31)



Connector Caps & Covers(21)



Connector Hardware(7)



IDC D-Sub Connectors(64)



Insertion & Extraction Tools(1)



PCB D-Sub Connectors(172)

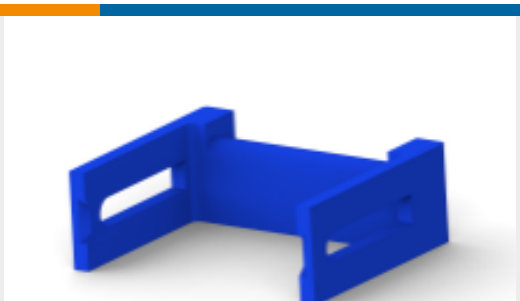
Customers Also Bought



TE Part #206227-1
23-7 RECEPT REV SEX



TE Part #66360-4
SOCKET ASSEMBLY, LOOSE PIECE,
TYPE III+



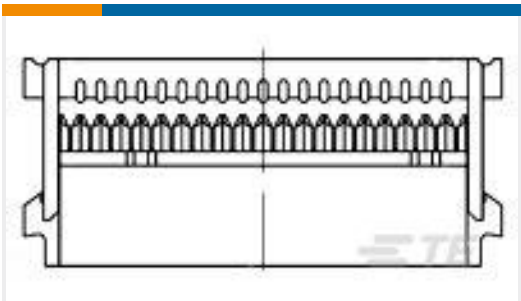
TE Part #1-1437021-2
Female Socket Connectors: Strain
Relief



TE Part #66740-6
TYPE XII FEMALE CONT (L.P.)



TE Part #120958-1
UPM EXPANDED PIN ASSEMBLY



TE Part #2-1658526-3
609-5030LF FEM SOCKET,LEAD FREE



TE Part #535056-5
096 EURO TYPE C RECEPT AP ASSY

Documents

Product Drawings
50 50SR TERMINATOR COVER

English

CAD Files
3D PDF
3D
Customer View Model
ENG_CVM_CVM_1-750877-5_P.2d_dxf.zip



English

Customer View Model

[ENG_CVM_CVM_1-750877-5_P.3d_igs.zip](#)

English

Customer View Model

[ENG_CVM_CVM_1-750877-5_P.3d_stp.zip](#)

English

By downloading the CAD file I accept and agree to the [Terms and Conditions](#) of use.

Product Specifications

[Application Specification](#)

English

Instruction Sheets

[Customer Manual \(U.S.\)](#)

English