

DESIGNED AND DIMENSIONED IN INCHES[MILLIMETERS]
ALL DIMENSIONS REFERENCE EXCEPT AS SHOWN

DO NOT
SCALE FROM
THIS PRINT

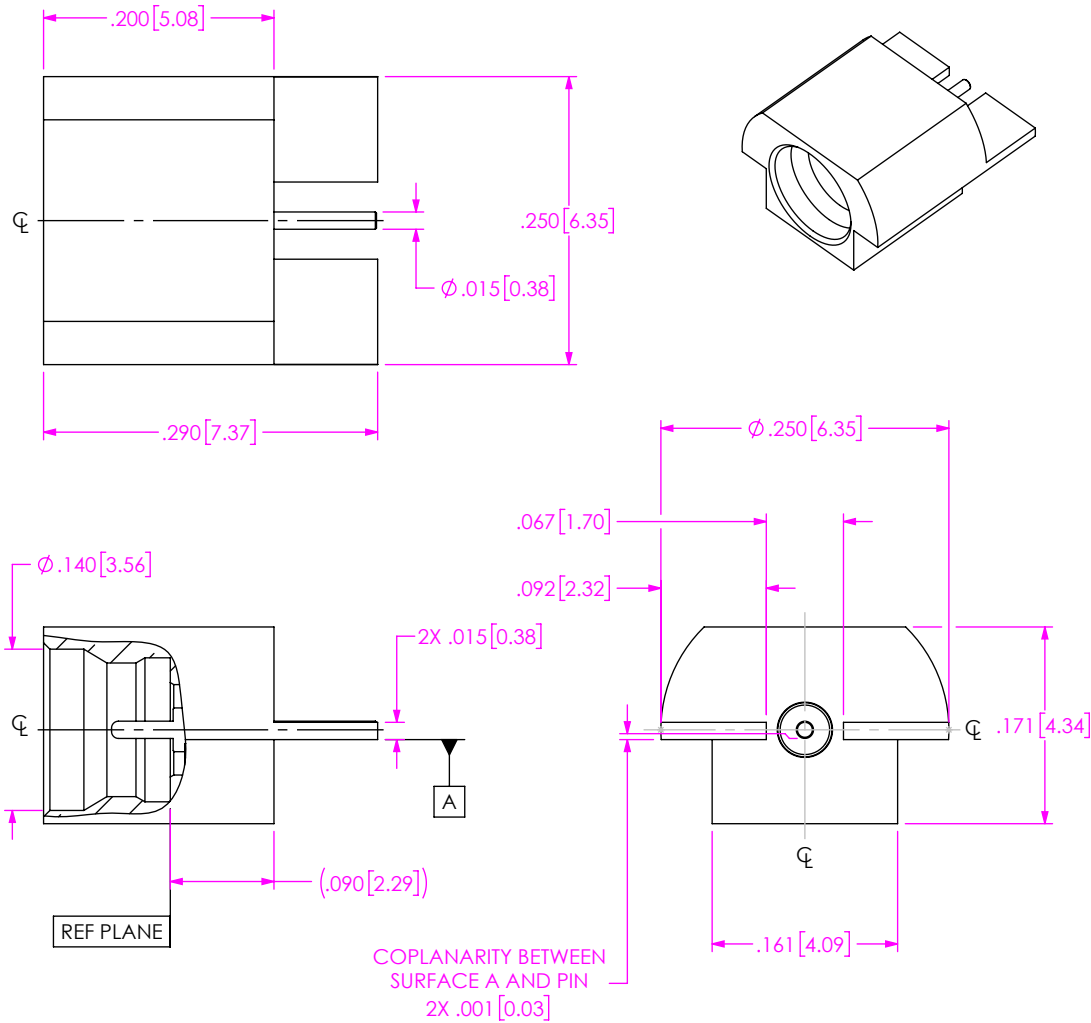


FIG 1
SMP-PF-P-XX-ST-EM SHOWN

NOTES:

1. TRAYS TO BE STANDARD PACKAGING

SMP-PX-P-XX-ST-EM

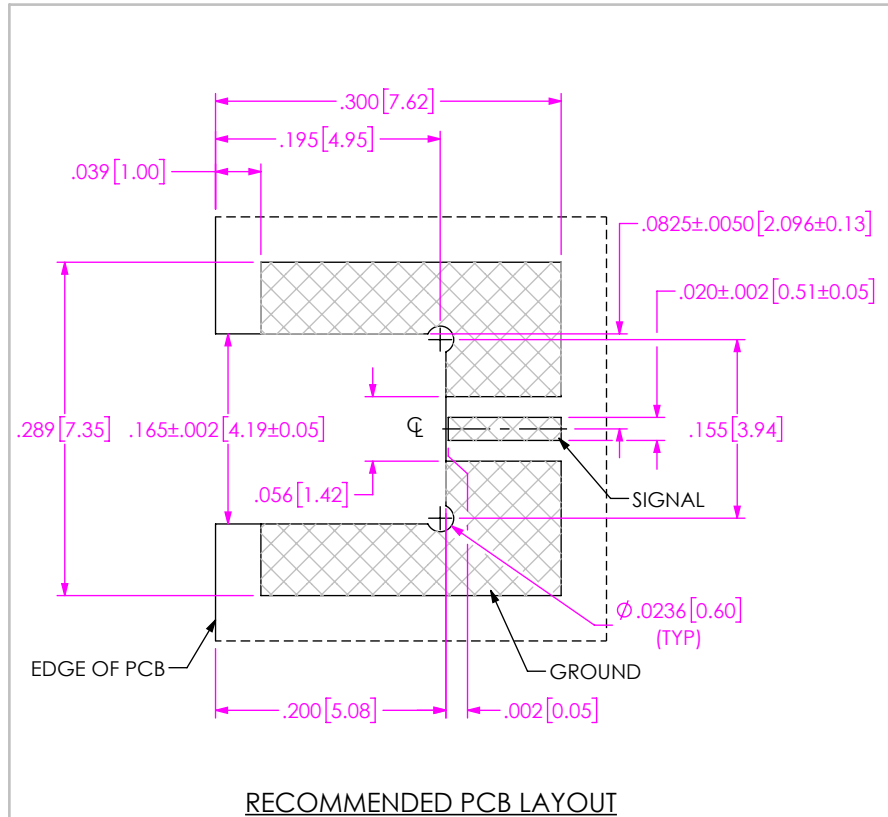
GENDER
-PF: PLUG FULL DETENT
-PL: PLUG LIMITED DETENT
-PS: PLUG SMOOTH DETENT

TERMINATION
-EM: EDGE MOUNT

ORIENTATION
-ST: STRAIGHT

TYPE
-P: PCB

FINISH
-HG: 30μ" HEAVY GOLD CENTER CONTACT,
10μ" GOLD OUTER BODY



RECOMMENDED PCB LAYOUT

PROPRIETARY NOTE
THIS DOCUMENT CONTAINS CONFIDENTIAL AND
PROPRIETARY INFORMATION AND ALL DESIGN,
MANUFACTURING, REPRODUCTION, USE, PATENT RIGHTS
AND SALES RIGHTS ARE EXPRESSLY RESERVED BY SAMTEC,
INC. THIS DOCUMENT SHALL NOT BE DISCLOSED, IN WHOLE
OR PART, TO ANY UNAUTHORIZED PERSON OR ENTITY NOR
REPRODUCED, TRANSFERRED OR INCORPORATED IN ANY
OTHER PROJECT IN ANY MANNER WITHOUT THE EXPRESS
WRITTEN CONSENT OF SAMTEC, INC.

DO NOT SCALE DRAWING
SHEET SCALE: 6:1

MATERIAL:
BODY & PIN: GOLD PLATED
BRASS

INSULATOR: PTFE

samtec

520 PARK EAST BLVD, NEW ALBANY, IN 47150
PHONE: 812-944-6733 FAX: 812-948-5047
e-Mail: info@SAMTEC.com code 55322

DESCRIPTION:
SMP-PLUG, EDGE MOUNT

DWG. NO.
SMP-PX-P-XX-ST-EM

BY: WILLY Y 10/5/2023 SHEET 1 OF 3

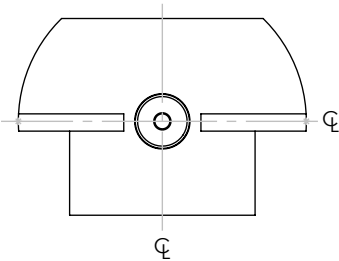
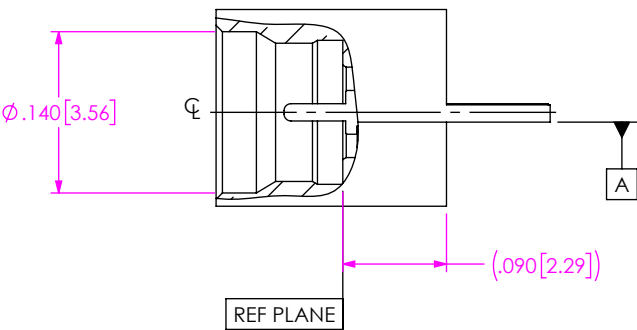


FIG 2
SMP-PL-P-XX-ST-EM SHOWN
(SAME AS FIG 1, EXCEPT AS SHOWN)

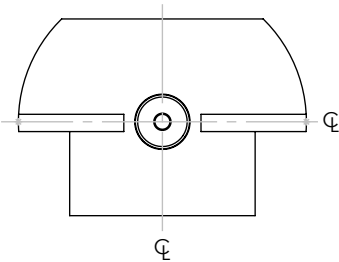
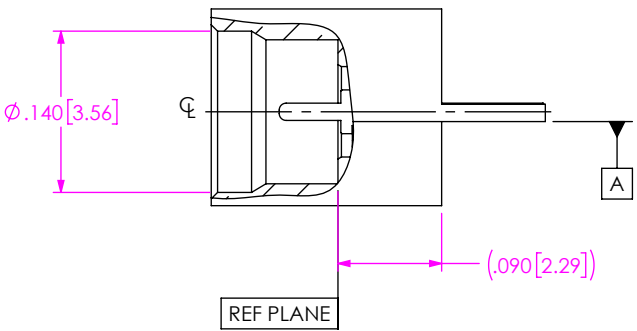

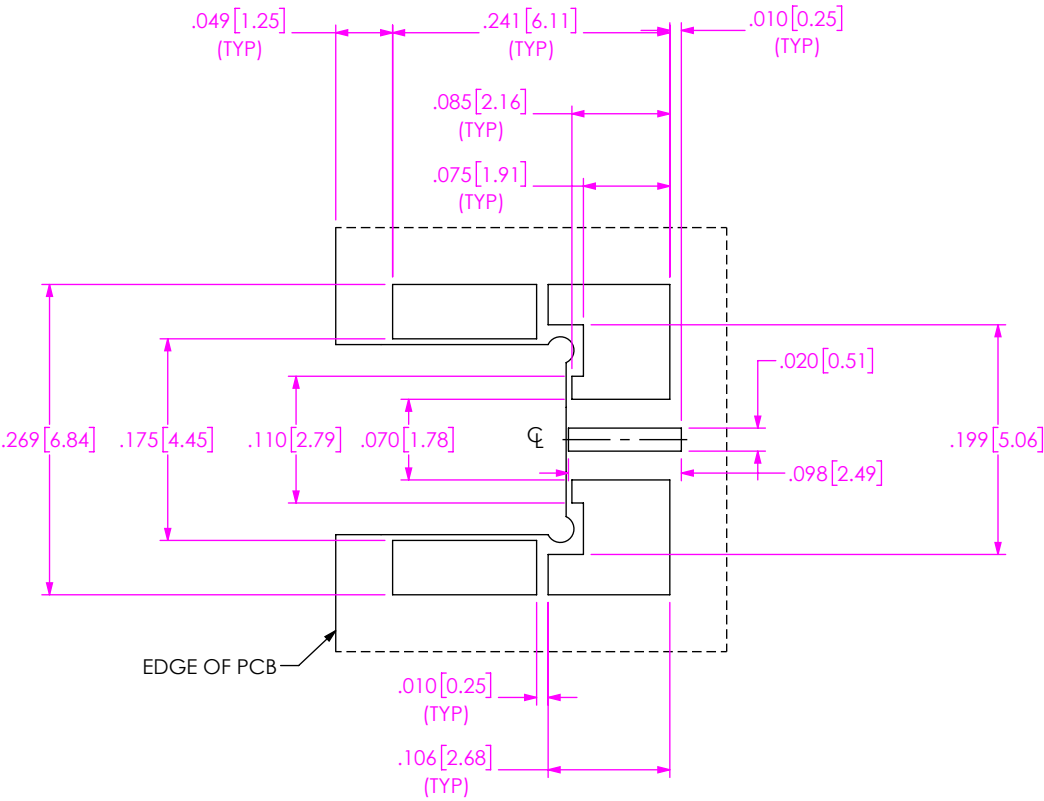



FIG 3
SMP-PS-P-XX-ST-EM SHOWN
(SAME AS FIG 1, EXCEPT AS SHOWN)

<p>• PROPRIETARY NOTE •</p> <p>THIS DOCUMENT CONTAINS CONFIDENTIAL AND PROPRIETARY INFORMATION AND ALL DESIGN, MANUFACTURING, REPRODUCTION, USE, PATENT RIGHTS AND SALES RIGHTS ARE EXPRESSLY RESERVED BY SAMTEC, INC. THIS DOCUMENT SHALL NOT BE DISCLOSED, IN WHOLE OR PART, TO ANY UNAUTHORIZED PERSON OR ENTITY NOR REPRODUCED, TRANSFERRED OR INCORPORATED IN ANY OTHER PROJECT IN ANY MANNER WITHOUT THE EXPRESS WRITTEN CONSENT OF SAMTEC, INC.</p>		 <p>520 PARK EAST BLVD, NEW ALBANY, IN 47150 PHONE: 812-944-6733 FAX: 812-948-5047 e-Mail info@SAMTEC.com code 55322</p>	
DO NOT SCALE DRAWING		DESCRIPTION: SMP-PLUG, EDGE MOUNT	
SHEET SCALE: 6:1		DWG. NO. SMP-PX-P-XX-ST-EM	
BY: WILLY Y		10/5/2023	SHEET 2 OF 3



RECOMMENDED STENCIL APERTURE LAYOUT

- NOTES:
- 2. RECOMMENDED STENCIL THICKNESS = .005".

<p>• PROPRIETARY NOTE •</p> <p>THIS DOCUMENT CONTAINS CONFIDENTIAL AND PROPRIETARY INFORMATION AND ALL DESIGN, MANUFACTURING, REPRODUCTION, USE, PATENT RIGHTS AND SALES RIGHTS ARE EXPRESSLY RESERVED BY SAMTEC, INC. THIS DOCUMENT SHALL NOT BE DISCLOSED, IN WHOLE OR PART, TO ANY UNAUTHORIZED PERSON OR ENTITY NOR REPRODUCED, TRANSFERRED OR INCORPORATED IN ANY OTHER PROJECT IN ANY MANNER WITHOUT THE EXPRESS WRITTEN CONSENT OF SAMTEC, INC.</p>	 <p>520 PARK EAST BLVD, NEW ALBANY, IN 47150 PHONE: 812-944-6733 FAX: 812-948-5047 e-Mail info@SAMTEC.com code 55322</p>		
	DESCRIPTION: SMP-PLUG, EDGE MOUNT		
	DWG. NO. SMP-PX-P-XX-ST-EM		
	BY: WILLY Y	10/5/2023	SHEET 3 OF 3