





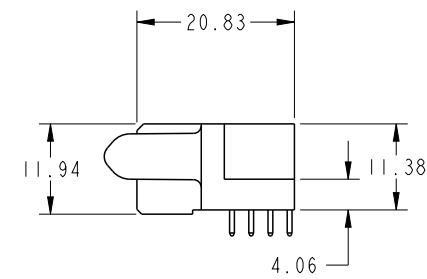
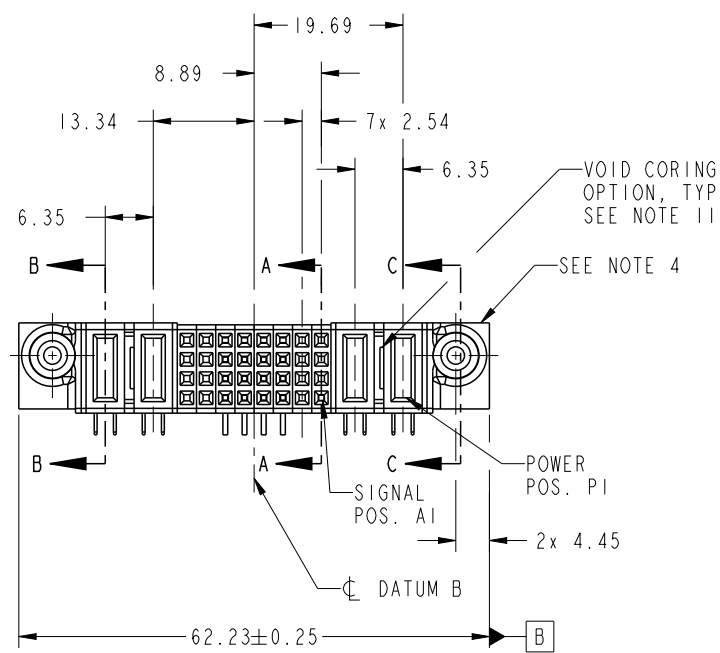




Copyright FCI.

PRODUCT NO.	ROWS	POWER			SIGNAL							POWER			
		E2	P4	P3	8	7	6	5	4	3	2	1	P2	P1	E1
51770-046-- NOTE 3	D C B A				X	X	H	H	H	H	X	X			
					X	X	G	G	G	G	X	X			
					X	X	F	F	F	F	X	X			
					X	X	E	E	E	E	X	X			

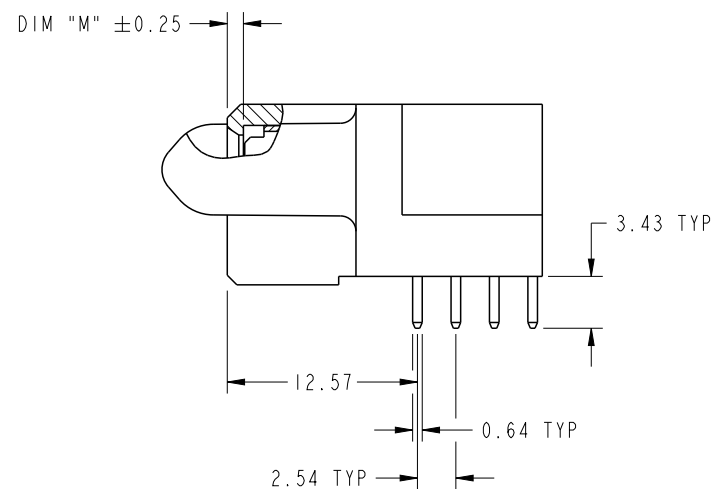
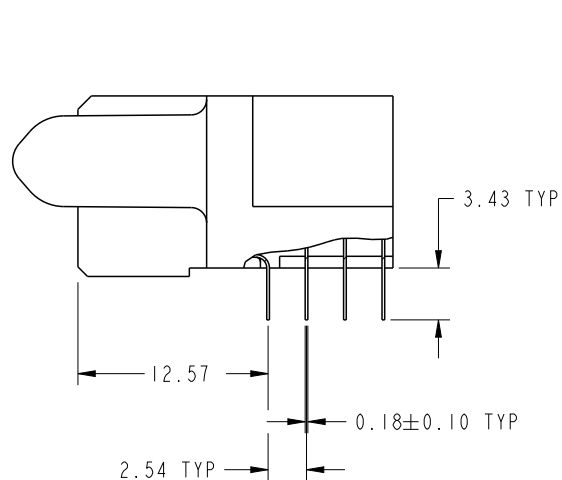


CODE	DIM "M" MATING LENGTH	CONTACT TYPE
PC	[2.34]	POWER
H	[2.34]	SIGNAL
G	[2.34]	SIGNAL
F	[2.34]	SIGNAL
E	[2.34]	SIGNAL
X	OMITTED	OMITTED

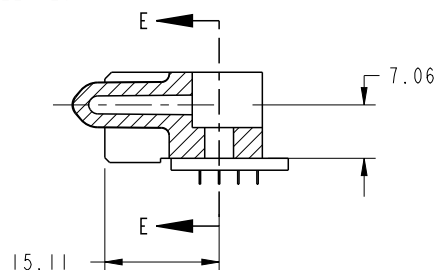
spec ref		SEE NOTES		dr	De-Ming Lu	2014/03/10	projection	MM	size	A4	scale	1:1	
tolerance std	TOLERANCES UNLESS OTHERWISE SPECIFIED			eng	De-Ming Lu	2014/04/02					ecn no	-	
				chr	-	-					rel level		Released
SEE NOTES				appr	Pei-Ming Zheng	2014/04/02	product family		PwrBlade				
surface	linear	0.X	±0.50		title 2P + 32S + 2P R/A SOLDER RECEPTACLE				dwg no	51770-046		rev	A
		0.XX	±0.25										
		0.XXX	±0.10										
	angular	0°	±2°	www.fci.com	cat. no.		Product - Customer Drw				sheet 1 of 4		

PRODUCT NUMBER

51770-046--
NOTE 3

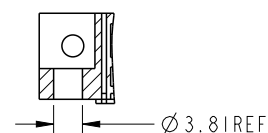


BROKEN-OUT SECTION A-A
SCALE 2:1

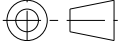




SECTION C-C

BROKEN-OUT SECTION B-B
SCALE 2:1

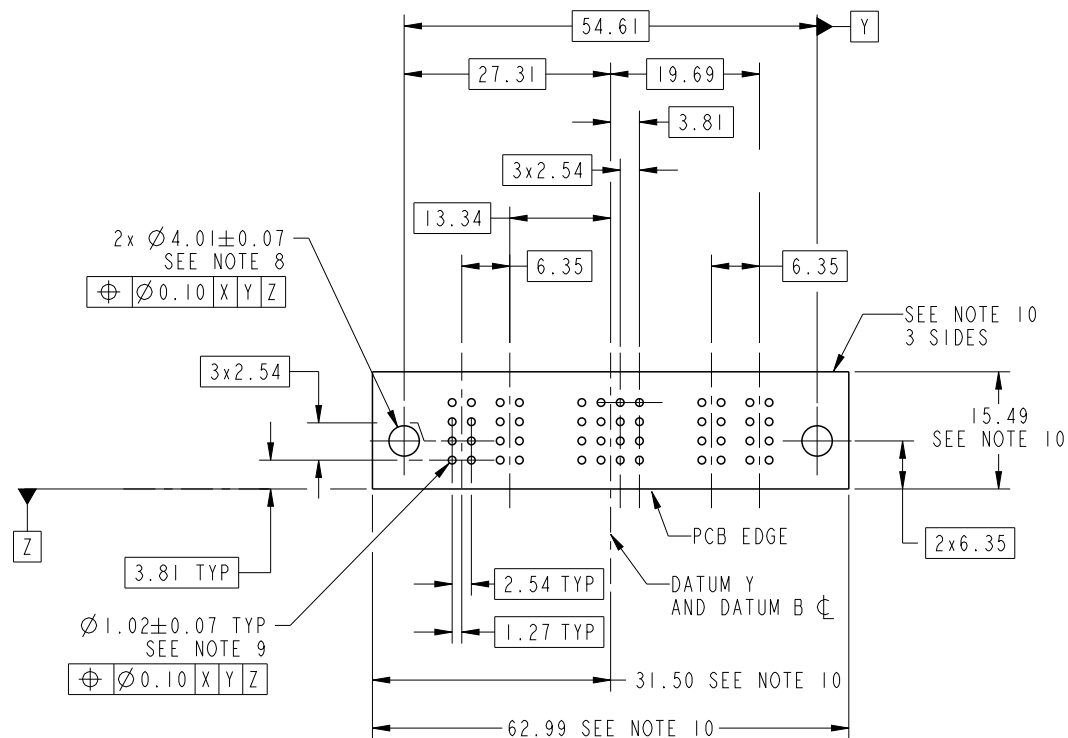


PARTIAL SECTION E-E

dr	De-Ming Lu	2014/03/10	<div>projection</div> <div></div>	<div>MM</div> <div></div>	size	A4	scale	1:1					
eng	De-Ming Lu	2014/04/02			ecn no								
chr	-	-											
appr	Pei-Ming Zheng	2014/04/02	product family		PwrBlade	rel level		Released					
	title				2P + 32S + 2P R/A SOLDER RECEPTACLE			dwg no		51770-046		rev	
www.fci.com		cat. no.			Product - Customer Drw						sheet 2 of 4		

PRODUCT NUMBER

51770-046--
NOTE 3



RECOMMENDED PCB LAYOUT

dr	De-Ming Lu	2014/03/10	<div>projection</div> <div></div>	<div>MM</div> <div></div>	size	A4	scale	1:1	
eng	De-Ming Lu	2014/04/02			ecn no	-			
chr	-	-			rel level	Released			
appr	Pei-Ming Zheng	2014/04/02	product family		PwrBlade				
<div></div>		title			2P + 32S + 2P		dwg no	51770-046	
		R/A SOLDER RECEPTACLE						A	
www.fci.com		cat. no.			Product - Customer Drw		sheet 3 of 4		



Copyright FCI.

PRODUCT NUMBER
51770-046--
NOTE 3

NOTES:

1. DIMENSIONS AND TOLERANCES ARE IN ACCORDANCE WITH
ASME Y14.5M, 1994 UNLESS OTHERWISE SPECIFIED.

CONNECTOR NOTES:

2. HOUSING MATERIAL: UL 94 V-0 GLASS FILLED HIGH-TEMP THERMOPLASTIC
POWER CONTACT MATERIAL: COPPER ALLOY
SIGNAL PIN MATERIAL: COPPER ALLOY
3. SEE ITEM 5 & 6 IN PRINT 10064183 FOR PLATING SPEC OF 51770-046 AND 51770-046LF RESPECTIVELY.

4. MANUFACTURER'S NAME, DATE CODE AND OPTIONAL P/N TO APPEAR ON
THIS SURFACE. THE MARK CAN BE OMITTED IF THERE IS NOT ENOUGH SPACE
ON THIS SURFACE.

5. PRODUCT SPECIFICATION GS-12-149.
APPLICATION SPECIFICATION BUS-20-067.

6. PACKAGED IN TRAYS.

PCB NOTES:

7. ALL HOLE DIAMETERS ARE FINISHED HOLE SIZE.

8. MOUNTING HOLES, WHERE APPLICABLE, ARE UNPLATED.

9. $\varnothing 1.151 \pm 0.025$ DRILLED HOLES PLATED WITH
0.008 MIN SnPb OR Sn OVER 0.03
TO 0.08 Cu PLATING TO ACHIEVE
 $\varnothing 1.02 \pm .07$ HOLE.

10. CONNECTOR KEEP-OUT ZONE.

11. THE VOID CORING IN BETWEEN POWER MODULES, SIGNAL
MODULES AND END MODULES ARE OPTIONAL AND THE SHAPE
MAY BE DIFFERENT FOR OPTIMIZE THE MOLDING PROCESS. THE
VOID CORING WILL NOT EFFECT TO PRODUCT FUNCTION.

dr	De-Ming Lu	2014/03/10	<div>projection</div> <div></div>	<div>MM</div> <div></div>	size	A4	scale	1:1
eng	De-Ming Lu	2014/04/02			ecn no	-		
chr	-	-						
appr	Pei-Ming Zheng	2014/04/02	product family		PwrBlade	rel level		Released
	title				dwg no		rev	
	2P + 32S + 2P				51770-046		A	
	R/A SOLDER RECEPTACLE							
www.fci.com	cat. no.		Product - Customer Drw			sheet 4 of 4		

Mouser Electronics

Authorized Distributor

Click to View Pricing, Inventory, Delivery & Lifecycle Information:

[FCI / Amphenol:](#)

[51770-046LF](#)