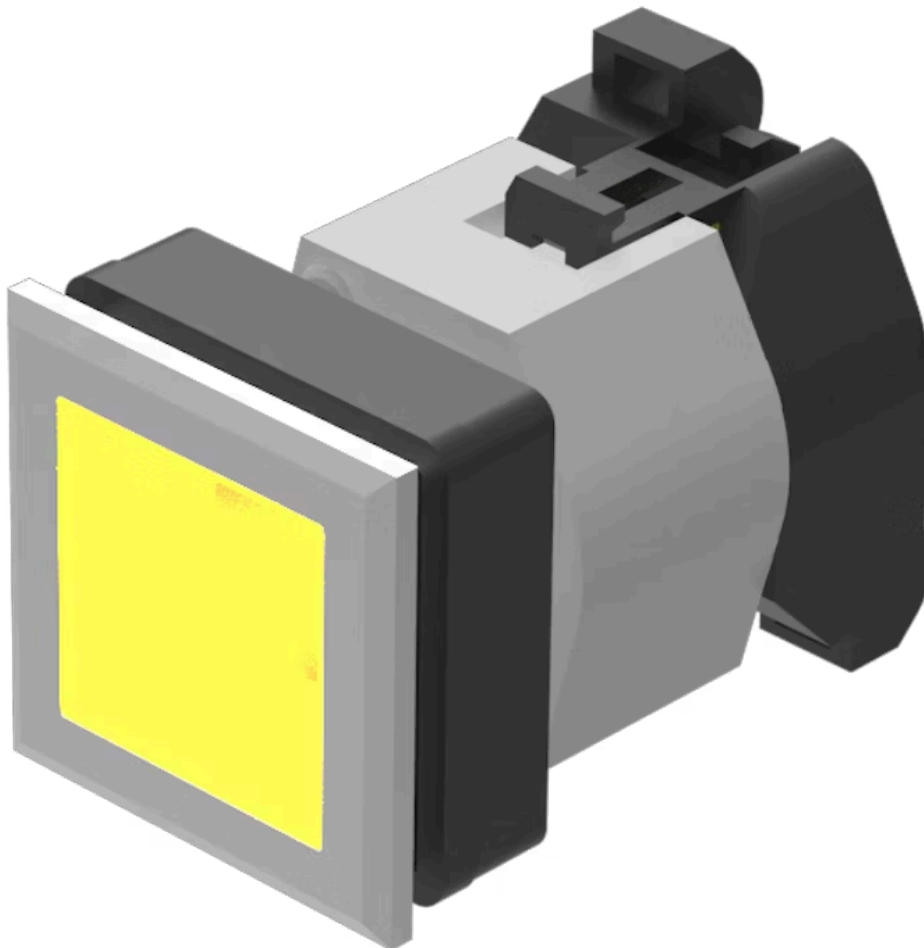


Actuator

704.230.408

Distribution by
DigiKey

DigiKey



<https://digikey.eao.com/p/704.230.408>

Your product:



704.230.408 Actuator

FRONT

Front dimension:	35 mm x 35 mm
Front form:	square
Front bezel material:	Plastic
Front bezel colour:	Silver

MOUNTING

Mounting cut-out:	30 mm x 30 mm
Design:	flush

OPERATING-/INDICATION PART

Lens shape:	flush
Lens illumination:	illuminative
Lens material:	Plastic
Lens optics:	transparent
Lens colour:	Yellow

ELECTRICAL CHARACTERISTICS

Standards:	The switches comply with the "Standards for low-voltage switching devices" DIN EN 60947-1
------------	---

MECHANICAL CHARACTERISTIC

Operating Travel:	ca. 5.8 mm \pm 0.2 mm
Operating force:	6.2 N

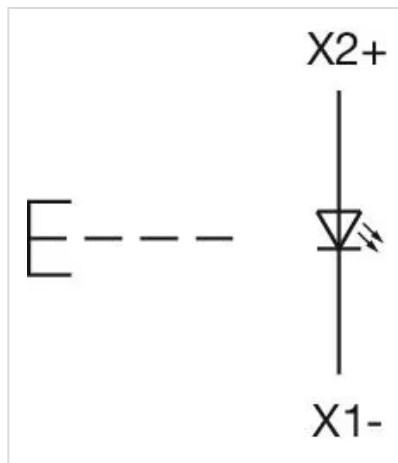
Terminal:	Screw terminal
Weight:	0.051 kg
Switching action:	Momentary
Mechanical lifetime:	≤3 Mio. cycles of operation

AMBIENT CONDITION

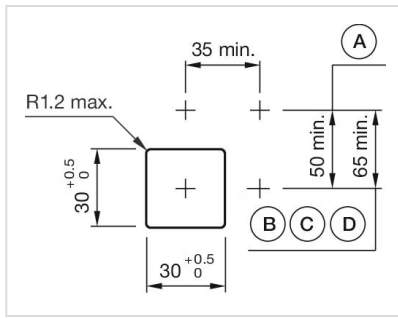
Operating temperature:	– 40 °C ... + 55 °C
IP Protection:	IP65 front side
Storage temperature:	– 40 °C ... + 85 °C

OTHER

Hints:	Max. 3 switching elements can be clipped on, The lamp block will be delivered with screw terminal
Housing material:	Plastic
Short Description:	Actuator, 30 mm x 30 mm, 35 mm x 35 mm, flush, illuminative, Yellow, Plastic, transparent, square, Silver, Plastic, Momentary, Screw terminal
max. number of switching elements:	3
Housing colour:	Black
Wiring diagrams:	

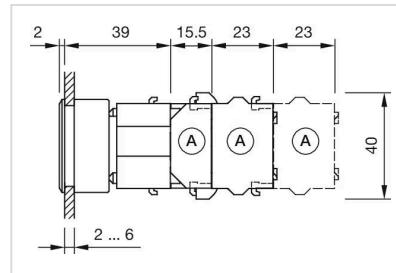


Mounting cut-outs:



A = Screw terminal
 B = Push-in terminal (PIT)
 C = Plug-in terminal 6.3 mm x 0.8 mm
 D = Double plug-in terminal 6.3 mm x 0.8 mm

Dimension drawings:



A = Screw terminal