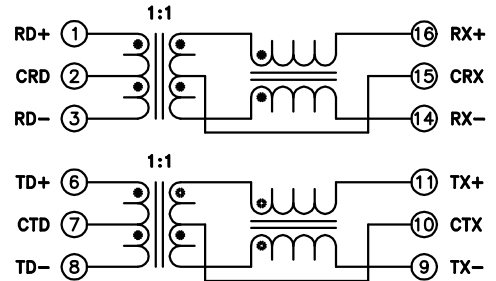
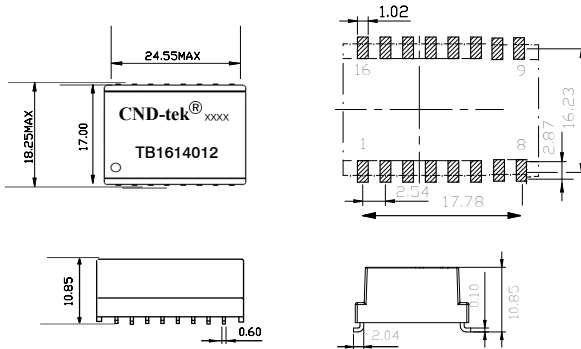


1. Compatible with various 10/100 Base-TX transceiver requiring 1:1 transmit and receive turns ratio
2. Compliant with IEEE 802.3ab standard including baseline wander compensation specification of 350 μ H OCL when Biased at 8mA
3. Low profile Surface Mount Packaging designed for Hi-Temp Reflow Process
4. Designed to comply with the following requirements as defined by IEC60950-1: Reinforced insulation at a working volatage of 250Vrms.
5. Designed to comply with 8mm min.creepage an clearance as defined by IEC60601-1.
6. Operating Temperature range: 0 $^{\circ}$ C TO +70 $^{\circ}$ C
7. Storage temperature range: -25 $^{\circ}$ C TO +125 $^{\circ}$ C



DIMENSIONS & SCHEMATICS

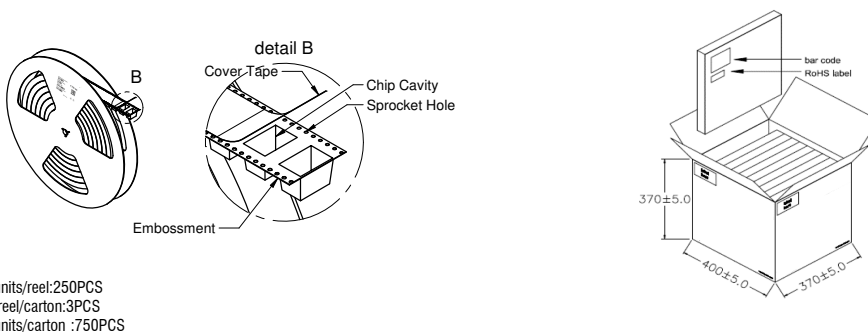


All 16 terminals must lie on a plane within .004mm of surface a after lead tinning

TECHNICAL SPECIFICATIONS

Inductance :	350 μ H Min. @ 100 KHz, 100mV with 8mA DC Bias Lp(16-14) 350 μ H Min. @ 100 KHz, 100mV with 8mA DC Bias Lp(11-9)
Turns Ratio($\pm 2\%$):	1CT:1CT,(1-3):(16-14) 1CT:1CT,(6-8):(11-9)
Insertion Loss:	-1.2 dB Max. @ 0.5-100MHz
Return Loss:	-18dB Min. @ 0.5-30MHz -15 dB Min. @ 30-45 MHz -13 dB Min.@ 45-60 MHz -10dB Min.@ 60-80 MHz
Cross Talk:	-40 dB Min.@ 1-100 MHz
DCMR:	-33dB Min.@ 0.5-100MHz
Isolation HI-POT:	4000Vrms 1mA 60Second,4800Vrms 1mA 3Second

PACKING SPECIFICATION



Shenzhen magnetic Lianda Electronics Co., LTD

Address: 505, West Block, No. 221, Niucheng Road, Niucheng Village, Baiwang Community, Xili Street, Nanshan District, Shenzhen
E-mail: sales1@cd-tek.com 0755-27652992 29016433 Website:www.cd-tek.com