

Printview: Female connector; with angled solder pins; 6-pole; Pin spacing 7.5 mm / 0.295 in; Solder pin 0.6x1 mm; codable; Horizontal PCB mounting; with 2 locking latches; with coding finger - Item No.: 232-836



Female connector; with angled solder pins; 6-pole; Pin spacing 7.5 mm / 0.295 in; Solder pin 0.6x1 mm; codable; Horizontal PCB mounting; with 2 locking latches; with coding finger



Item No.: 232-836

Female connector; with angled solder pins; 6-pole; Pin spacing 7.5 mm / 0.295 in; Solder pin 0.6x1 mm; codable; Horizontal PCB mounting; with 2 locking latches; with coding finger

Marking

RoHS ☒
Compliant

Business data

Supplier	WAGO
Item no.	232-836
GTIN / EAN	4044918580106
Content	1
Order amount	50
Customer item number	

Notes

Item description:Integrated test ports for 2mm Ø test plugsFor “board-to-board” and “board-to-wire” connectionsTouch-proof PCB outputsEasy-to-identify PCB inputs and outputsCoding option availableSafety information 1: The MULTI CONNECTION SYSTEM (MCS) is designed without breaking capacity for compliance with DIN EN 61984. When used as intended, MCS Connectors shall not be connected/disconnected when live or under load. The circuit design should ensure header pins, which can be touched, are not live when unmated.

Technical data

Miscellaneous

Printview: Female connector; with angled solder pins; 6-pole; Pin spacing 7.5 mm / 0.295 in; Solder pin 0.6x1 mm; codable; Horizontal PCB mounting; with 2 locking latches; with coding finger - Item No.: 232-836

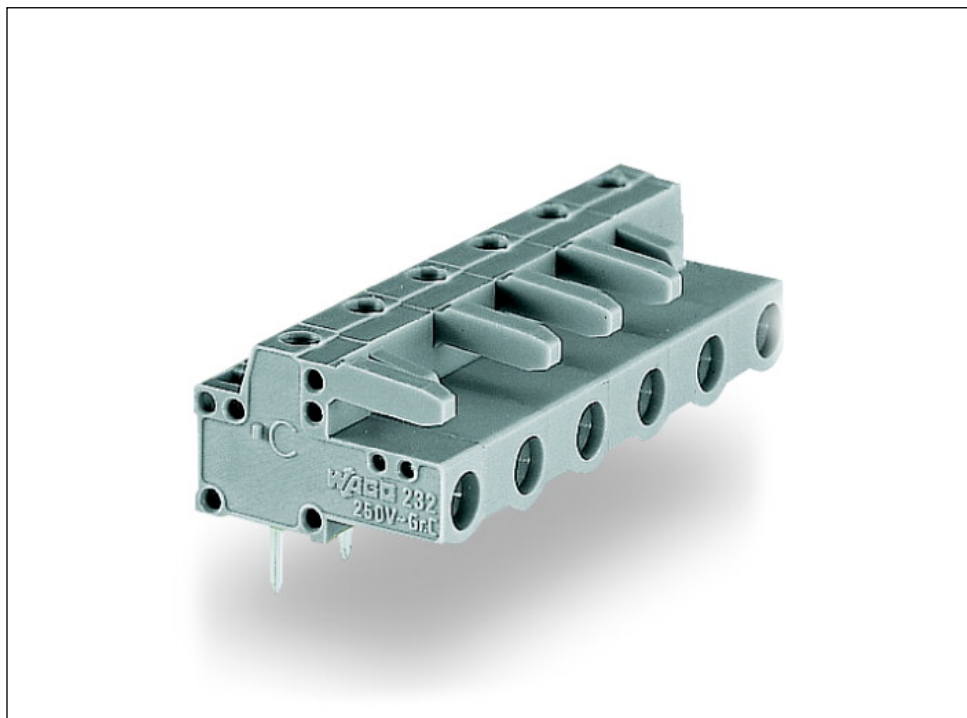
Technical data	
Other versions (or variants) can be requested from WAGO Sale	Other pole numbers
Packaging type	BOX
Ratings per	IEC/EN 60664-1
Rated voltage (III / 3) [V]	500 [V]
Rated impulse voltage (III / 3) [kV]	6 [kV]
Rated voltage (III/2) [V]	630 [V]
Rated impulse voltage (III / 2) [kV]	6 [kV]
Rated voltage (II / 2) [V]	1000 [V]
Rated impulse voltage (II / 2) [kV]	6 [kV]
Rated current [A]	12 [A]
Legend (ratings)	(III / 2) Overvoltage category III / Pollution degree 2
Approvals per	UL 1059
Rated voltage UL (Use Group B) [V]	300 [V]
Rated current UL (Use Group B) [A]	15 [A]
Rated voltage UL (Use Group D) [V]	300 [V]
Rated current UL (Use Group D) [A]	10 [A]
Rated voltage CSA (Use Group B) [V]	300 [V]
Rated current CSA (Use Group B) [A]	15 [A]
Rated voltage CSA (Use Group D) [V]	300 [V]
Rated current CSA (Use Group D) [A]	10 [A]
No. of poles	6
Number of levels	1
Pin spacing	7.5 mm (0.295 in)
Width	44 mm / 1.732 Inch
Height	16.6 mm / 0.654 Inch
Height from the surface	11.6 mm / 0.457 Inch
Depth	18.25 mm / 0.719 Inch
Solder pin length [mm]	5 [mm]
Solder pin dimensions	0.6 x 1 mm
Drilled hole diameter (tolerance) [mm]	1.3(+ 0.1) [mm]
Contact type (pluggable connector)	Female connector/socket
Connector connection type	for PCBs
Mismating protection	nein

Printview: Female connector; with angled solder pins; 6-pole; Pin spacing 7.5 mm / 0.295 in; Solder pin 0.6x1 mm; codable; Horizontal PCB mounting; with 2 locking latches; with coding finger - Item No.: 232-836

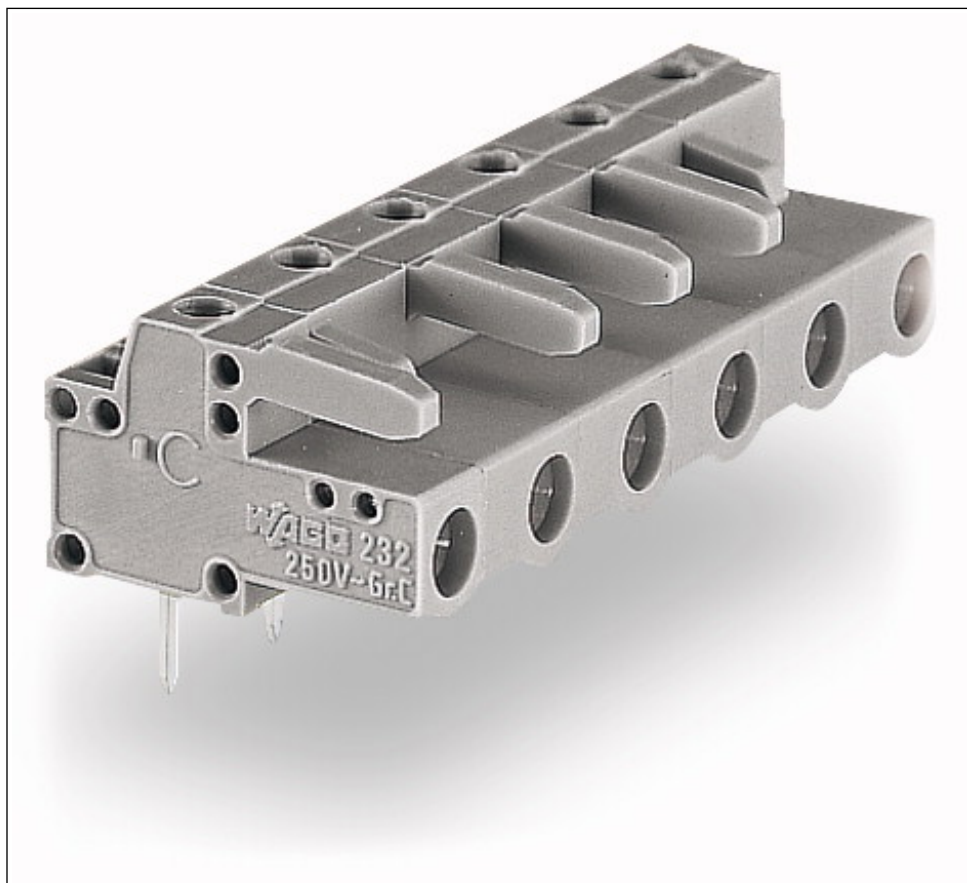
Technical data	
<i>PCB contact</i>	<i>THT</i>
<i>Solder pin arrangement</i>	<i>over the entire female connector, in line</i>
<i>Number of solder pins per potential</i>	<i>1</i>
<i>Color</i>	<i>gray</i>
<i>Material group</i>	<i>I</i>
<i>Insulating material</i>	<i>Polyamide 66 (PA 66)</i>
<i>Flammability class per UL94</i>	<i>V0</i>
<i>Contact material</i>	<i>Copper alloy</i>
<i>Contact plating</i>	<i>tin-plated</i>
<i>Fire load [MJ]</i>	<i>0.129 [MJ]</i>
<i>Weight [g]</i>	<i>6.56 [g]</i>
<i>Limit temperature range</i>	<i>-60 ... 85 °C</i>
<i>Pin spacing from [in]</i>	<i>0.295 [in]</i>
<i>Pin spacing from [mm]</i>	<i>7.5 [mm]</i>
<i>Contact type</i>	<i>Female connector/socket; for PCBs</i>
<i>Product Family</i>	<i>MCS MIDI Classic</i>
<i>Main product function</i>	<i>Female connector/socket</i>
<i>Product type</i>	<i>Pluggable PCB connectors</i>

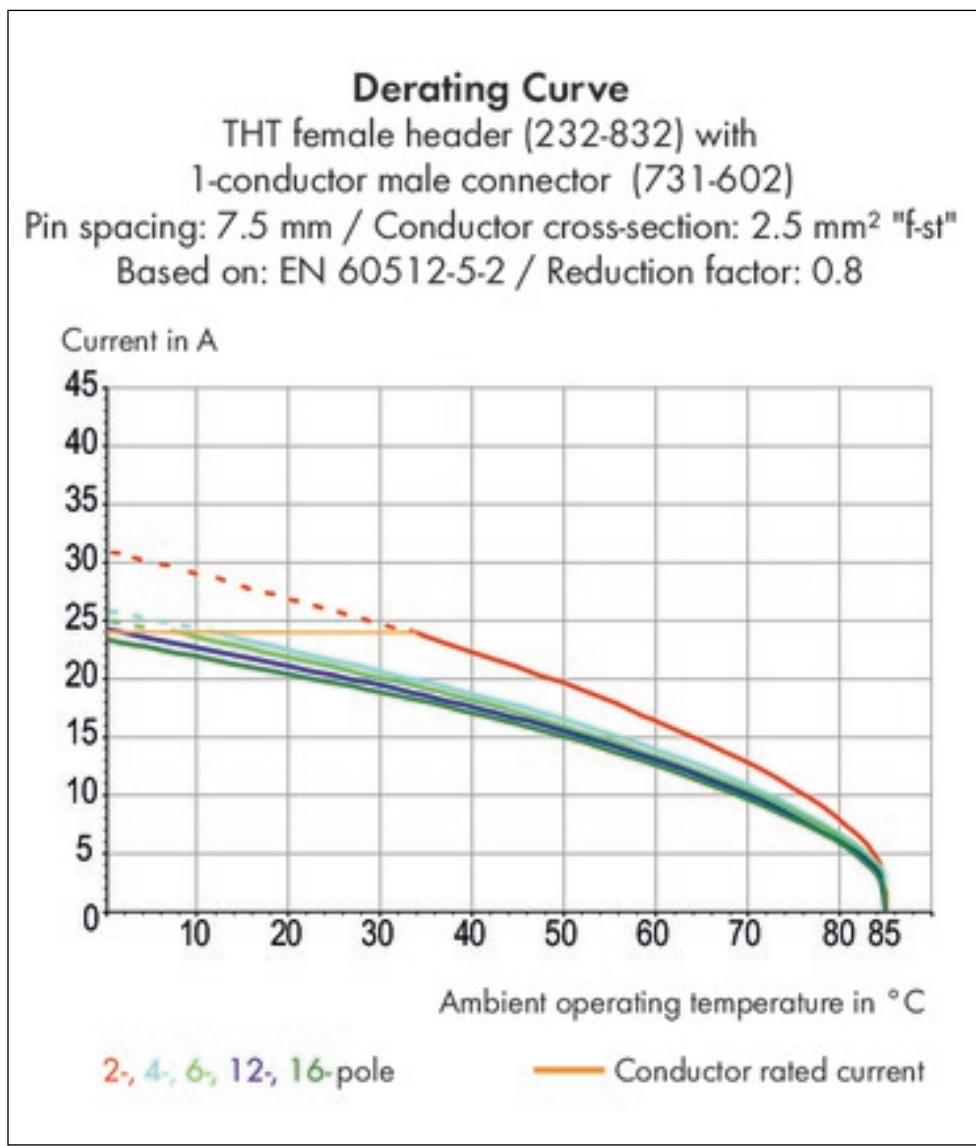
Printview: Female connector; with angled solder pins; 6-pole; Pin spacing 7.5 mm / 0.295 in; Solder pin 0.6x1 mm; codable; Horizontal PCB mounting; with 2 locking latches; with coding finger - Item No.: 232-836

Images & drawings

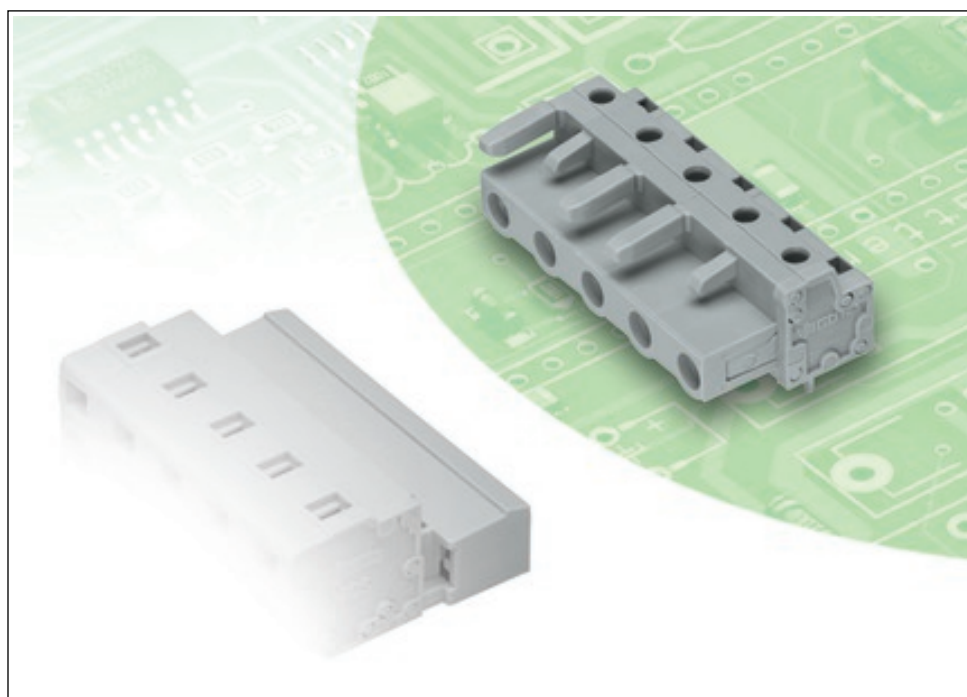
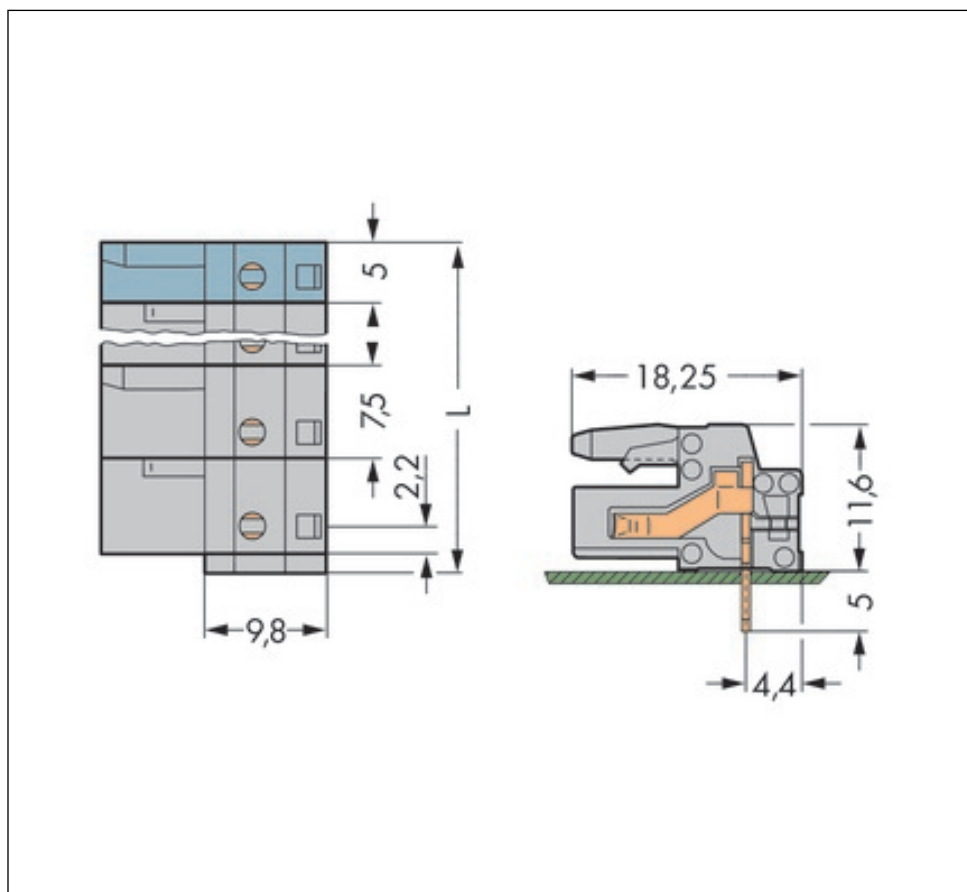


Printview: Female connector; with angled solder pins; 6-pole; Pin spacing 7.5 mm / 0.295 in; Solder pin 0.6x1 mm; codable; Horizontal PCB mounting; with 2 locking latches; with coding finger - Item No.: 232-836





Printview: Female connector; with angled solder pins; 6-pole; Pin spacing 7.5 mm / 0.295 in; Solder pin 0.6x1 mm; codable; Horizontal PCB mounting; with 2 locking latches; with coding finger - Item No.: 232-836



Printview: Female connector; with angled solder pins; 6-pole; Pin spacing 7.5 mm / 0.295 in; Solder pin 0.6x1 mm; codable; Horizontal PCB mounting; with 2 locking latches; with coding finger - Item No.: 232-836

Address

WAGO Kontakttechnik GmbH & Co. KG

Hansastr. 27

32423 Minden

Telefon: 0571/887-0

Fax: 0571/887-169

<http://www.wago.com>

© WAGO Kontakttechnik GmbH & Co. KG

Technische Änderungen und Irrtümer vorbehalten.