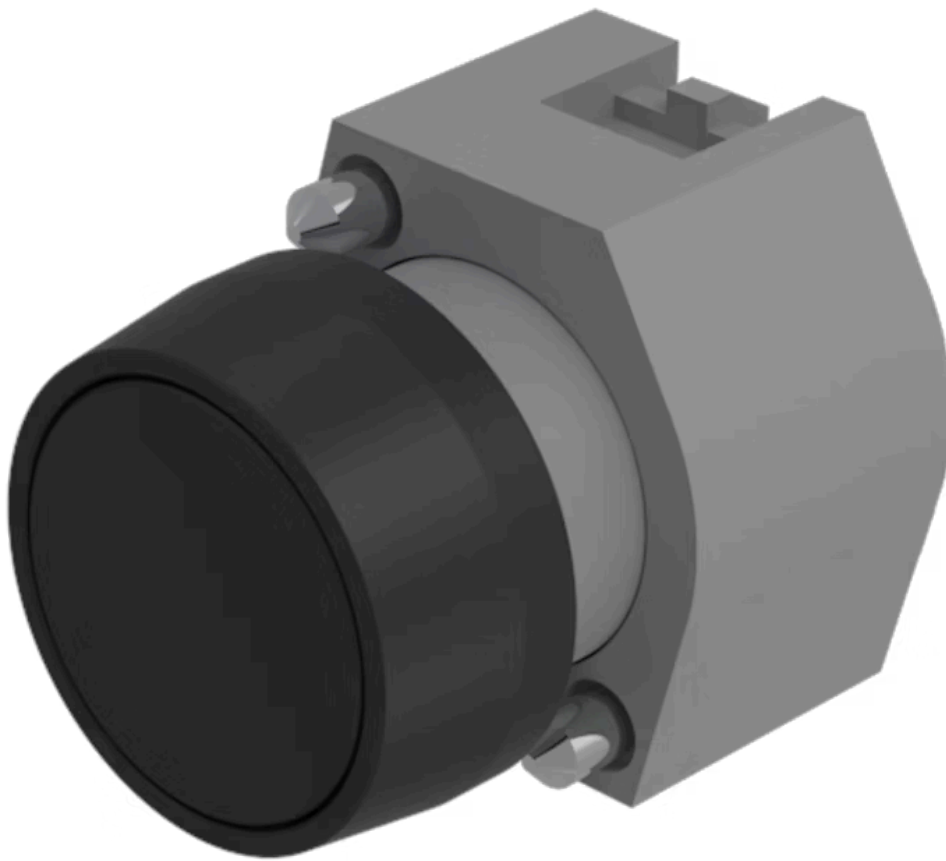


# Actuator

704.039.0

Distribution by  
DigiKey

**DigiKey**



<https://digikey.eao.com/p/704.039.0>

Your product:

---



## 704.039.0 Actuator

### FRONT

Front bezel material:	Plastic
Front bezel colour:	Black
Front form:	round
Front dimension:	Ø 29 mm

### MOUNTING

Design:	raised
---------	--------

### OPERATING-/INDICATION PART

Lens illumination:	non illuminative
Lens shape:	flush
Lens material:	Plastic
Lens optics:	opaque
Lens colour:	Black

### ELECTRICAL CHARACTERISTICS

Standards:	The switches comply with the "Standards for low-voltage switching devices" DIN EN 60947-1
------------	---

### MECHANICAL CHARACTERISTIC

Operating force:	8 N
Mechanical lifetime:	≤3 Mio. cycles of operation
Switching action:	Maintained

**Weight:** 0.04 kg

**Operating Travel:** ca. 5.8 mm ± 0.2 mm

## AMBIENT CONDITION

**IP Protection:** IP65 front side

**Operating temperature:** – 40 °C ... + 55 °C

**Storage temperature:** – 40 °C ... + 85 °C

## OTHER

**max. number of switching elements:** 3

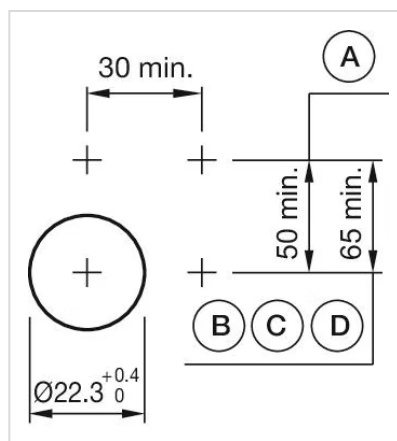
**Short Description:** Actuator, Ø 29 mm, flush, non illuminative, Black, Plastic, opaque, round, Black, Plastic, Maintained

**Housing colour:** Grey

**Hints:** Frontring with protective cover to be mounted with a torque of 0.4 Nm onto actuator, Max. 3 switching elements can be clipped on

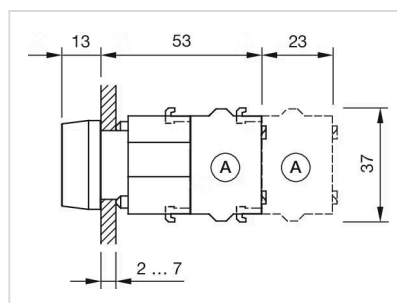
**Housing material:** Plastic

**Mounting cut-outs:**



A = Screw terminal  
B = Push-in terminal (PIT)  
C = Plug-in terminal 6.3 mm x 0.8 mm  
D = Double plug-in terminal 6.3 mm x 0.8 mm

**Dimension drawings:**



A = Screw terminal

**Wiring diagrams:**

E<sub>v</sub>--