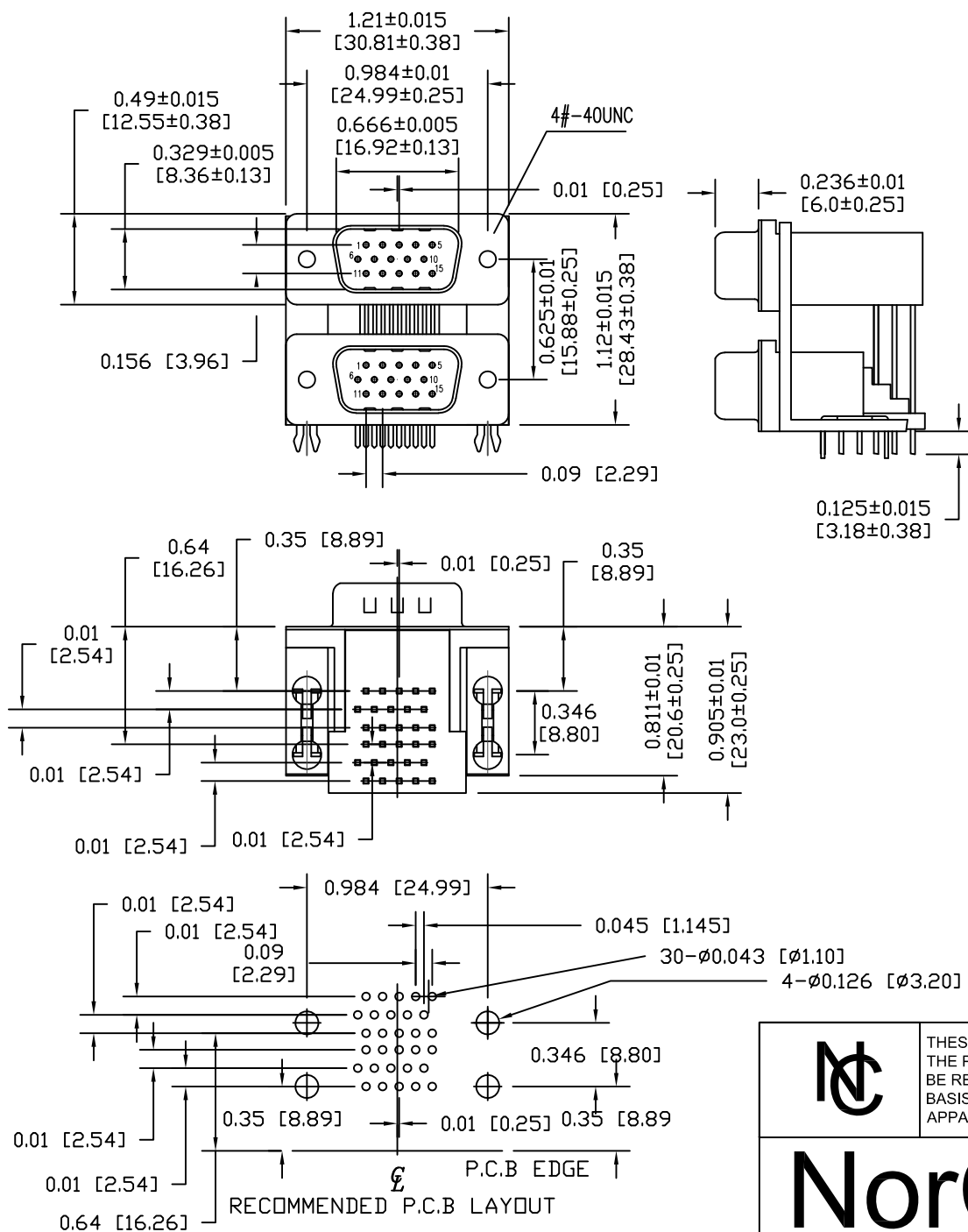


DESCRIPTION: HD - 15 POS - MALE OVER MALE -0.625" CENTERS



ELECTRICAL CHARACTERISTICS

VOLTAGE: 250 VAC (rms) Max.
 CURRENT RATING: 3 AMPS PER CONTACT
 CONTACT RESISTANCE: 25 Milliohms Max.
 INSULATION RESISTANCE: 5000 MOhms Min.
 DIELECTRIC WITHSTANDING: 1000 VAC (rms)
 TOTAL MATING FORCE: 6.0 Kgf Max.
 TOTAL UNMATING FORCE: 1.2 Kgf Min.
 OPERATING TEMPERATURE: -55°C TO +85°C

MATERIAL CHARACTERISTICS

HOUSING: PA9T, UL94V-0, BLACK
 CONTACTS: COPPER ALLOY
 SHELL: SPCC
 BOARDLOCK: COPPER ALLOY
 BRACKET: ZINC ALLOY
 SCREWLOCK: COPPER ALLOY

PLATING CHARACTERISTICS

CONTACTS: SEE PART NUMBER KEY BELOW
 SHELL: NICKEL PLATED
 BOARDLOCK: TIN PLATED
 BRACKET: NICKEL PLATED
 SCREWLOCK: NICKEL PLATED

189-YYY-613R49Y

SERIES
 POSITIONS
 H15
 GENDER
 61 = MALE OVER MALE
 SHELL PLATING
 3 = NICKEL
 RoHS COMPLIANT (HIGH TEMP. PROCESS)
 HARDWARE OPTIONS
 49 = 4-40 INSERTS/BOARD LOCKS
 PLATING OPTIONS
 2 = 30u" GOLD PLATING MATING AREA & BRIGHT TIN IN SOLDER AREA
 7 = GOLD FLASH OVER NICKEL IN MATING AREA WITH TIN OVER NICKEL TAILS

RoHS Compliant



THESE DRAWINGS AND SPECIFICATIONS ARE THE PROPERTY OF NorComp AND SHALL NOT BE REPRODUCED, COPIED OR USED AS THE BASIS FOR THE MANUFACTURE OF SALE OF APPARATUS WITHOUT WRITTEN PERMISSION.

NorComp

DRAWN: J. KADEL		DATE: 07/05/2018	
SCALE: N.T.S.	SHEET 1	OF 1	REV 4
DWG NO. 189-H15-613R497			