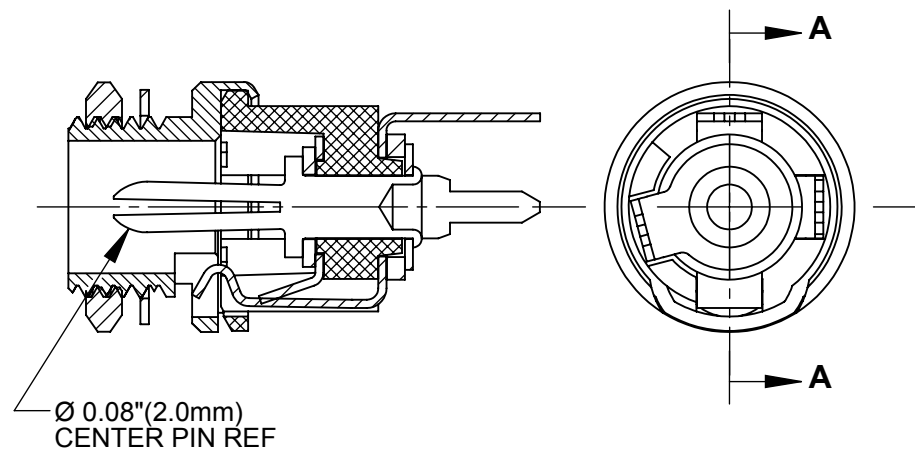
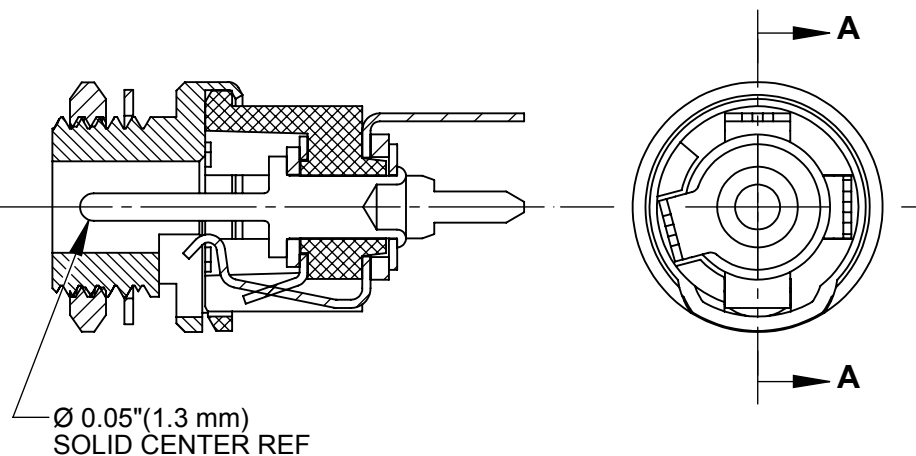


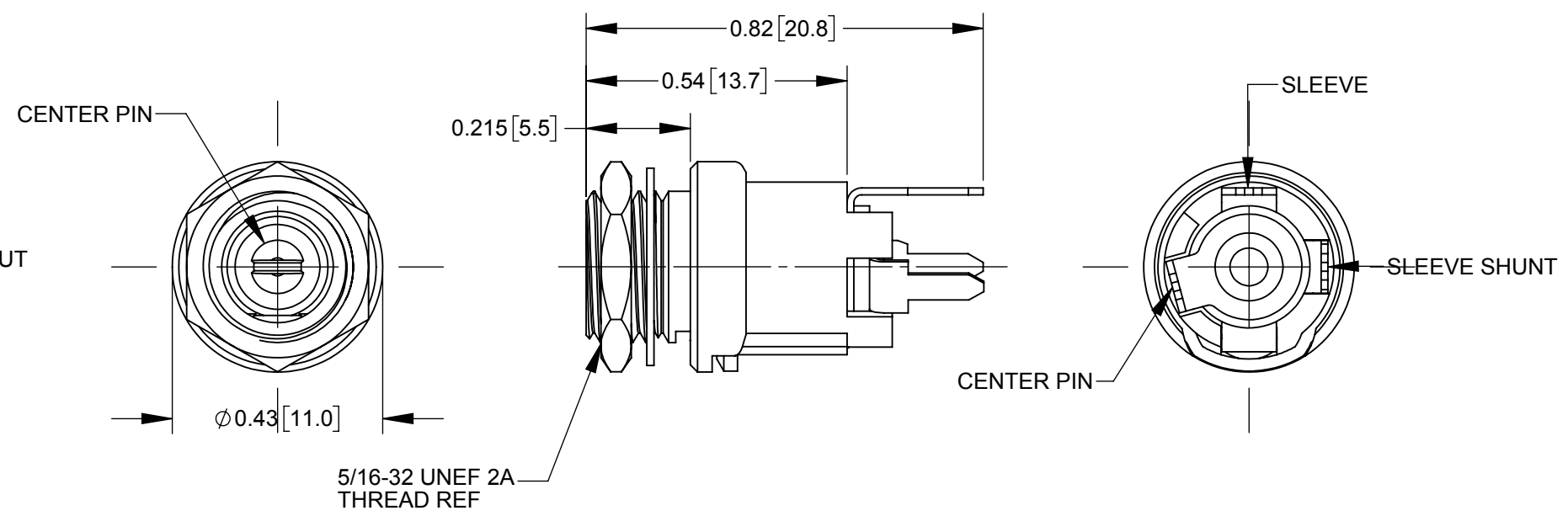
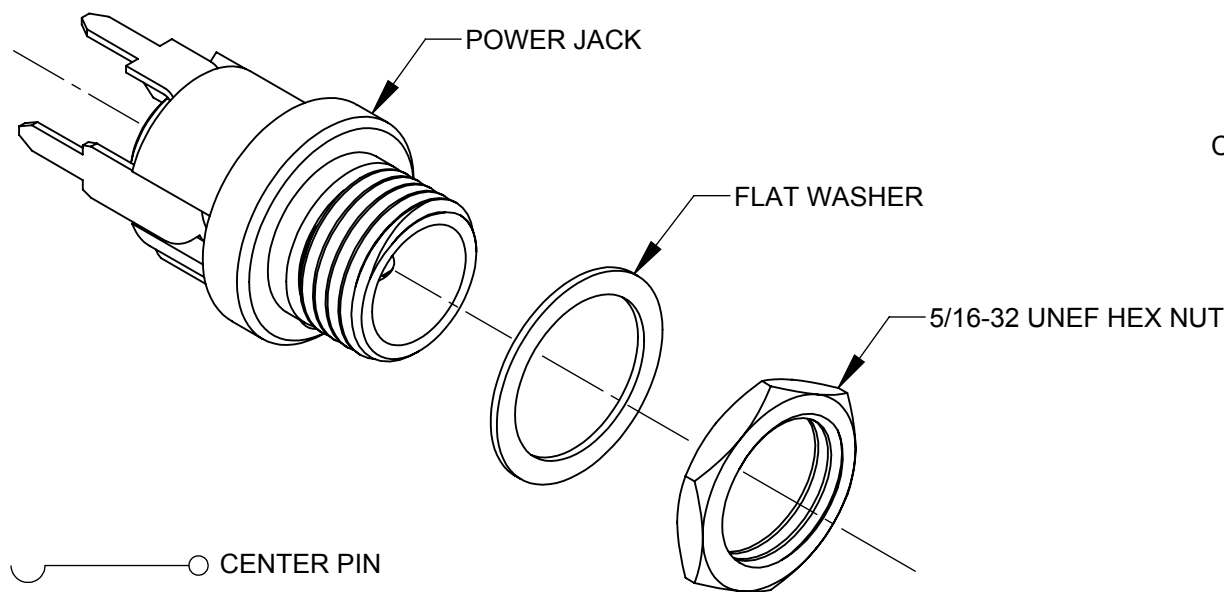
PC712AH



PC722AH



PC732AH



SCHEMATIC

PRELIMINARY

CUSTOMER DRAWING

- NOTES:
- DIMENSIONS SHOWN FOR REFERENCE ONLY.
 - HEX NUT AND FLAT WASHER SUPPLIED UNASSEMBLED.
 - MATERIAL:
HOUSING, HEX NUT - COPPER ALLOY, NICKEL PLATED
INSULATOR HOUSING - THERMOPLASTIC, BLACK
TERMINAL INSULATORS - PHENOLIC
FLAT WASHER - STEEL, NICKEL PLATED
PIN, SPRING, TERMINALS - COPPER ALLOY, SILVER PLATED
 - THESE PRODUCTS ARE RoHS COMPLIANT

0A	PDR 15004	6/27/16	PNK	SRC
REV	ECO NUMBER	DATE	BY	APVD
REVISIONS				

UNLESS OTHERWISE SPECIFIED

1. ALL DIMENSIONS IN INCHES

- TWO PLACE DECIMALS ±0.02

- THREE PLACE DECIMALS ±0.005

DO NOT SCALE DRAWING

THIS DRAWING DESCRIBES A DESIGN CONSIDERED PROPRIETARY IN NATURE, DEVELOPED AND MANUFACTURED BY SWITCHCRAFT INC. AND IS RELEASED ON A CONFIDENTIAL BASIS FOR IDENTIFICATION PURPOSES ONLY.													
SIZE		WIDTH		MULT		LBS/M		TEMPER					
FINISH SPEC No.					MATERIAL SPEC No.								
FIRST USED ON			SCALE 3:1		Switchcraft®								
DATE DRAWN	BY	CHKD	APVD										
6/27/16	PNK	PNK	SRC										
		6/27/16	6/27/16	SHEET 1 OF 1									
NAME HT POWER JACKS PC7_ 2AH SERIES, RoHS					PART No. PC712AH PC722AH PC732AH			REV 0A					