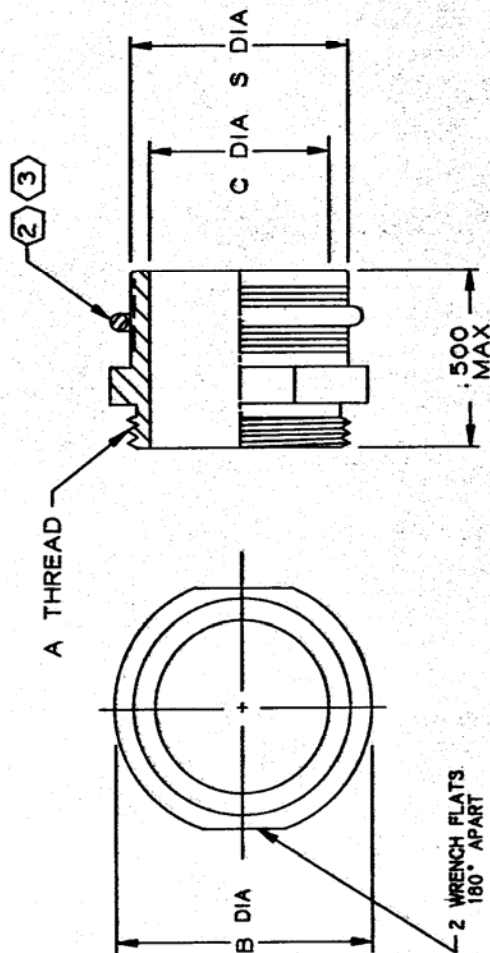


NOTES:

1. ALL INTERNAL EDGES SHALL BE ROUNDED.
- (2) SEE DRAWING 925078 FOR DETAIL ON TINEL-LOCK RING. THE TINEL RING IS AVAILABLE IN TWO TYPES. RINGS DESIGNED TO BE HEATED ELECTRICALLY HAVE A THIN DIELECTRIC LINING ON THE INSIDE DIAMETER. RINGS TO BE INSTALLED WITH A HOT AIR GUN HAVE NO LINING.
- ALL RINGS ARE MARKED WITH THERMOCHROMIC PAINT WHICH CHANGES COLOR WHEN INSTALLATION TEMPERATURE IS REACHED.
- (3) RINGS SHALL BEAR NO MARKING.
4. TEMPERATURE RANGE FOR ALUMINUM ALLOY:
-65° C TO +150° C.
5. ADAPTER TO BE PERMANENTLY MARKED WITH ASSEMBLY PART NO LESS RING DESIGNATOR (EG: TXS10AU08) AND CODE IDENT. NO. (06090).
- (6) ADAPTER MATES TO: DEUTSCH DSM, RSM, SAK CONNECTORS.
7. THIS PRODUCT IS DESIGNED TO TERMINATE A BRAIDED CABLE SHIELD.



ORDERING INFORMATION

PRODUCT DESIGNATOR — TXS10 A U 08 A I

MATERIAL — ALUMINUM ALLOY 6061-T6
PER QQ-A-225

FINISH : — LEACHED IRIDITE PER MIL-C-5541,
CLASS 1A

ENTRY SIZE —

BRAID (SEE MSG-101)
BRAID A: SINGLE LAYER 36 AWG
BRAID B: SINGLE LAYER 30 AWG OR
DOUBLE LAYER 36 AWG

RING WITH INSULATING LINING
(OMIT IF NOT REQUIRED)

ENTRY SIZE	SHELL SIZE	A THD CLASS 2A	B MAX	C ±.020	S
08	7	.625-24 UNEF	.781	.531	.628 .619
12	16 & 19	.875-20 UNEF	1.031	.781	.877 .867

SPECIFICATION CONTROL DRAWING

UNLESS OTHERWISE SPECIFIED DIMENSIONS ARE IN INCHES. METRIC DIMENSIONS ARE IN BRACKETS.		DRAWN	Q. BUI	1-5-89	Raychem	TITLE	SOLID TINEL-LOCK ADAPTER CODE 71
DECIMALS .XXX ± .XX ± ANGLES .X ±	mm mm	CHECKED	D. BARTS	1-19-89			
WEIGHT lbs g		APPROVED	D. BARTS	1-19-89	DO NOT SCALE THIS DRAWING		
CAD NAME		APPROVED	N. DYDO	1-23-89	C 06090		
TINEL ANGLE PROJECTION		TXS 10			NONE		

Mouser Electronics

Authorized Distributor

Click to View Pricing, Inventory, Delivery & Lifecycle Information:

[TE Connectivity:](#)

[TXS10AU12AI](#)