

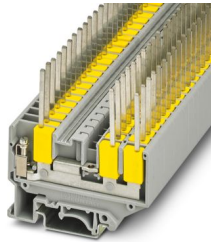
# UVKB 4-FS(2,8)TP(2,4)234D/L - Feed-through terminal block



1954469

<https://www.phoenixcontact.com/us/products/1954469>

Please be informed that the data shown in this PDF document is generated from our online catalog. Please find the complete data in the user documentation. Our general terms of use for downloads are valid.



Feed-through terminal block, nom. voltage: 500 V, nominal current: 29 A, connection method: Screw connection, cross section: 0.2 mm<sup>2</sup> - 4 mm<sup>2</sup>, connection method: TERMI-POINT®, mounting: NS 35/7,5, NS 35/15, NS 32, color: gray

## Commercial data

Item number	1954469
Packing unit	50 pc
Minimum order quantity	1 pc
Note	Made to order (non-returnable)
Product key	BE511X
GTIN	4017918269111
Weight per piece (including packing)	17.62 g
Weight per piece (excluding packing)	17.54 g
Country of origin	PL

# UVKB 4-FS(2,8)TP(2,4)234D/L - Feed-through terminal block



1954469

<https://www.phoenixcontact.com/us/products/1954469>

## Technical data

### Product properties

Product type	Hybrid terminal block
Number of connections	7
Number of rows	1
Potentials	1

### Insulation characteristics

Overvoltage category	III
Degree of pollution	3

### Electrical properties

Rated surge voltage	6 kV
---------------------	------

### Connection data

Number of connections per level	7
Nominal cross section	4 mm <sup>2</sup>

### Level 1 below 1

Screw thread	M3
Tightening torque	0.6 ... 0.8 Nm
Stripping length	8 mm
TERMI-POINT pin dimensions	2.4 x 0.8 mm
Position of the TERMI-POINT pin	horizontal
Internal cylindrical gage	A3
Conductor cross section rigid	0.2 mm <sup>2</sup> ... 4 mm <sup>2</sup>
Cross section AWG	24 ... 12 (converted acc. to IEC)
Conductor cross section flexible	0.2 mm <sup>2</sup> ... 4 mm <sup>2</sup>
Conductor cross section, flexible [AWG]	24 ... 12 (converted acc. to IEC)
Conductor cross-section flexible (ferrule without plastic sleeve)	0.25 mm <sup>2</sup> ... 4 mm <sup>2</sup>
Flexible conductor cross section (ferrule with plastic sleeve)	0.25 mm <sup>2</sup> ... 2.5 mm <sup>2</sup>
Cross-section with insertion bridge, rigid	4 mm <sup>2</sup>
Cross-section with insertion bridge, flexible	4 mm <sup>2</sup>
2 conductors with same cross section, solid	0.2 mm <sup>2</sup> ... 1.5 mm <sup>2</sup>
2 conductors with same cross section, flexible	0.2 mm <sup>2</sup> ... 1.5 mm <sup>2</sup>
2 conductors with same cross section, flexible, with ferrule without plastic sleeve	0.25 mm <sup>2</sup> ... 1.5 mm <sup>2</sup>
2 conductors with the same cross section, flexible, with TWIN ferrule with plastic sleeve	0.5 mm <sup>2</sup> ... 2.5 mm <sup>2</sup>
Nominal current	29 A
Maximum load current	29 A (with 4 mm <sup>2</sup> conductor cross section)
Nominal voltage	500 V

### Dimensions

# UVKB 4-FS(2,8)TP(2,4)234D/L - Feed-through terminal block



1954469

<https://www.phoenixcontact.com/us/products/1954469>

Width	6.2 mm
End cover width	2.2 mm

## Material specifications

Color	gray
Flammability rating according to UL 94	V2
Insulating material group	I
Insulating material	PA

## Mechanical properties

### Mechanical data

Open side panel	Yes
-----------------	-----

## Mounting

Mounting type	NS 35/7,5
	NS 35/15
	NS 32

# UVKB 4-FS(2,8)TP(2,4)234D/L - Feed-through terminal block

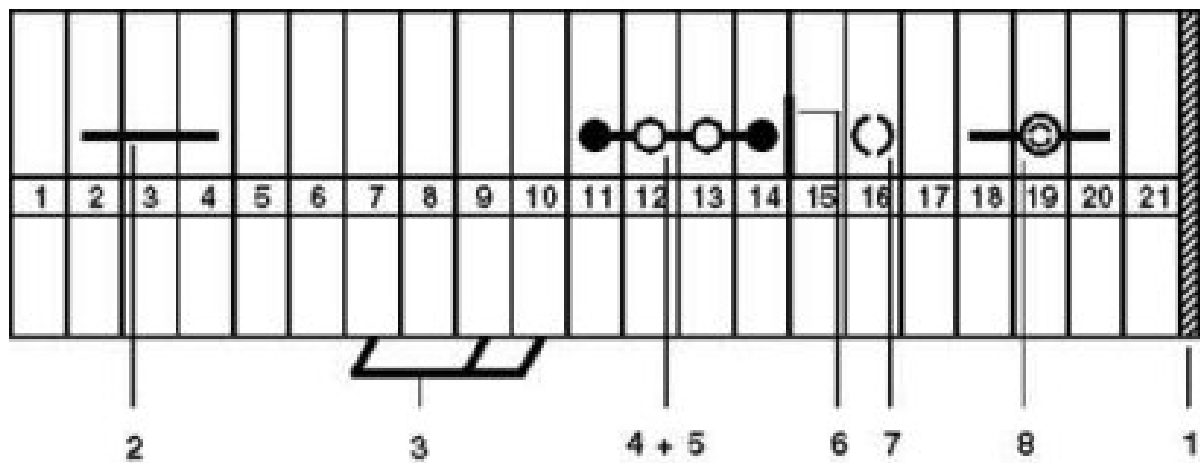


1954469

<https://www.phoenixcontact.com/us/products/1954469>

## Drawings

### Circuit diagram



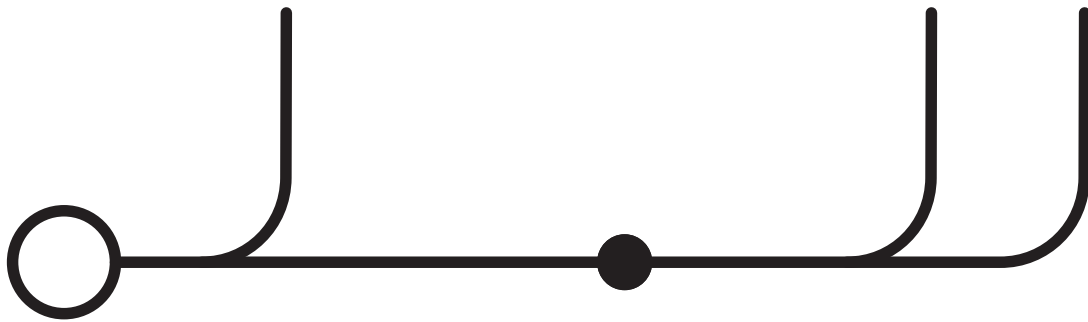
# UVKB 4-FS(2,8)TP(2,4)234D/L - Feed-through terminal block



1954469

<https://www.phoenixcontact.com/us/products/1954469>

Circuit diagram



# UVKB 4-FS(2,8)TP(2,4)234D/L - Feed-through terminal block



1954469

<https://www.phoenixcontact.com/us/products/1954469>

## Accessories

**i** Note: Applying some accessories below might limit this product.

### IS-K 4 - Bridge bar isolator

1302338

<https://www.phoenixcontact.com/us/products/1302338>



Bridge bar isolator, color: gray

### ISSBI 10- 6 - Bridge

0301505

<https://www.phoenixcontact.com/us/products/0301505>



Bridge, pitch: 6 mm, number of positions: 10, color: silver

**i** Max. current carrying capacity: 24 A

# UVKB 4-FS(2,8)TP(2,4)234D/L - Feed-through terminal block



1954469

<https://www.phoenixcontact.com/us/products/1954469>

## FBI 100- 6 - Fixed bridge

0201650

<https://www.phoenixcontact.com/us/products/0201650>



Fixed bridge, pitch: 6.2 mm, number of positions: 100, color: silver

---


## FBI 10- 6 - Fixed bridge

0203250

<https://www.phoenixcontact.com/us/products/0203250>



Fixed bridge, pitch: 6.2 mm, number of positions: 10, color: silver

 Max. current carrying capacity: 24 A

# UVKB 4-FS(2,8)TP(2,4)234D/L - Feed-through terminal block



1954469

<https://www.phoenixcontact.com/us/products/1954469>

## FBI 20- 6 - Fixed bridge

0201867

<https://www.phoenixcontact.com/us/products/0201867>



Fixed bridge, pitch: 6.2 mm, number of positions: 20, color: silver

---


## EB 3- 6 - Insertion bridge

0201142

<https://www.phoenixcontact.com/us/products/0201142>



Insertion bridge, pitch: 6.2 mm, number of positions: 3, color: gray

 Max. current carrying capacity: 24 A



# UVKB 4-FS(2,8)TP(2,4)234D/L - Feed-through terminal block



1954469

<https://www.phoenixcontact.com/us/products/1954469>


## EB 2- 6 - Insertion bridge

0201155

<https://www.phoenixcontact.com/us/products/0201155>

Insertion bridge, pitch: 6.2 mm, number of positions: 2, color: gray



 Max. current carrying capacity: 24 A

---


## EB 10- 6 - Insertion bridge

0201139

<https://www.phoenixcontact.com/us/products/0201139>

Insertion bridge, pitch: 6.2 mm, number of positions: 10, color: gray



 Max. current carrying capacity: 24 A

# UVKB 4-FS(2,8)TP(2,4)234D/L - Feed-through terminal block



1954469

<https://www.phoenixcontact.com/us/products/1954469>

## D-UVKB 4 - End cover

1920024

<https://www.phoenixcontact.com/us/products/1920024>



End cover, depth: 34 mm, width: 2.2 mm, height: 68 mm, color: gray

---

## TS-K - Separating plate

1302215

<https://www.phoenixcontact.com/us/products/1302215>



Separating plate, depth: 22 mm, width: 0.5 mm, height: 22 mm, color: gray

# UVKB 4-FS(2,8)TP(2,4)234D/L - Feed-through terminal block



1954469

<https://www.phoenixcontact.com/us/products/1954469>

## SBS 6:UNBEDRUCKT - Marker card

1007222

<https://www.phoenixcontact.com/us/products/1007222>



Marker card, Card, white, unlabeled, can be labeled with: Marker pen, mounting type: snapped, snap into flat marker groove, for terminal block width: 6 mm, lettering field size: 6 x 6.1 mm, Number of individual labels: 250

---

## SZS 0,6X3,5 - Screwdriver

1205053

<https://www.phoenixcontact.com/us/products/1205053>



Actuation tool, for ST terminal blocks, insulated, also suitable for use as a bladed screwdriver, size: 0.6 x 3.5 x 100 mm, 2-component grip, with non-slip grip

# UVKB 4-FS(2,8)TP(2,4)234D/L - Feed-through terminal block



1954469

<https://www.phoenixcontact.com/us/products/1954469>

## NS 32 PERF 2000MM-VPE 10 - DIN rail perforated

1201002

<https://www.phoenixcontact.com/us/products/1201002>



DIN rail perforated, Pack of 10 (20 m), acc. to EN 60715, material: Steel, galvanized, passivated with a thick layer, G profile, color: silver

---

## NS 32 UNPERF 2000MM-VPE 10 - DIN rail, unperforated

1201015

<https://www.phoenixcontact.com/us/products/1201015>



DIN rail, unperforated, Pack of 10 (20 m), acc. to EN 60715, material: Steel, galvanized, passivated with a thick layer, G profile, color: silver

# UVKB 4-FS(2,8)TP(2,4)234D/L - Feed-through terminal block



1954469

<https://www.phoenixcontact.com/us/products/1954469>

## NS 35/ 7,5 PERF 2000MM - DIN rail perforated

0801733

<https://www.phoenixcontact.com/us/products/0801733>



DIN rail perforated, Pack of 25 (50 m), acc. to EN 60715, material: Steel, galvanized, passivated with a thick layer, Standard profile, color: silver

---

## NS 35/ 7,5 UNPERF 2000MM - DIN rail, unperforated

0801681

<https://www.phoenixcontact.com/us/products/0801681>



DIN rail, unperforated, Pack of 25 (50 m), acc. to EN 60715, material: Steel, galvanized, passivated with a thick layer, Standard profile, color: silver

# UVKB 4-FS(2,8)TP(2,4)234D/L - Feed-through terminal block



1954469

<https://www.phoenixcontact.com/us/products/1954469>

## NS 35/ 7,5 WH PERF 2000MM - DIN rail perforated

1204119

<https://www.phoenixcontact.com/us/products/1204119>



DIN rail perforated, Pack of 25 (50 m), acc. to EN 60715, material: Steel, Galvanized, white passivated, Standard profile, color: silver

---

## NS 35/ 7,5 WH UNPERF 2000MM-VPE 10 - DIN rail, unperforated

1204122

<https://www.phoenixcontact.com/us/products/1204122>



DIN rail, unperforated, Pack of 10 (20 m), acc. to EN 60715, material: Steel, Galvanized, white passivated, Standard profile, color: silver

# UVKB 4-FS(2,8)TP(2,4)234D/L - Feed-through terminal block



1954469

<https://www.phoenixcontact.com/us/products/1954469>

## NS 35/ 7,5 AL UNPERF 2000MM - DIN rail, unperforated

0801704

<https://www.phoenixcontact.com/us/products/0801704>



DIN rail, unperforated, Pack of 25 (50 m), acc. to EN 60715, material: Aluminum, uncoated, Standard profile, color: silver

---

## NS 35/ 7,5 ZN PERF 2000MM - DIN rail perforated

1206421

<https://www.phoenixcontact.com/us/products/1206421>



DIN rail perforated, Pack of 25 (50 m), acc. to EN 60715, material: Steel, galvanized, Standard profile, color: silver

# UVKB 4-FS(2,8)TP(2,4)234D/L - Feed-through terminal block



1954469

<https://www.phoenixcontact.com/us/products/1954469>

## NS 35/ 7,5 ZN UNPERF 2000MM - DIN rail, unperforated

1206434

<https://www.phoenixcontact.com/us/products/1206434>



DIN rail, unperforated, Pack of 25 (50 m), acc. to EN 60715, material: Steel, galvanized, Standard profile, color: silver

---

## NS 35/ 7,5 CU UNPERF 2000MM-VPE 10 - DIN rail, unperforated

0801762

<https://www.phoenixcontact.com/us/products/0801762>



DIN rail, unperforated, Pack of 10 (20 m), acc. to EN 60715, material: Copper, uncoated, Standard profile, color: copper-colored



# UVKB 4-FS(2,8)TP(2,4)234D/L - Feed-through terminal block



1954469

<https://www.phoenixcontact.com/us/products/1954469>

## NS 35/ 7,5 CAP - End cap

1206560

<https://www.phoenixcontact.com/us/products/1206560>

DIN rail end piece, for DIN rail NS 35/7.5



---

## NS 35/15 PERF 2000MM - DIN rail perforated

1201730

<https://www.phoenixcontact.com/us/products/1201730>



DIN rail perforated, Pack of 25 (50 m), similar to EN 60715, material: Steel, galvanized, passivated with a thick layer, Standard profile, color: silver

# UVKB 4-FS(2,8)TP(2,4)234D/L - Feed-through terminal block



1954469

<https://www.phoenixcontact.com/us/products/1954469>

## NS 35/15 UNPERF 2000MM - DIN rail, unperforated

1201714

<https://www.phoenixcontact.com/us/products/1201714>



DIN rail, unperforated, Pack of 25 (50 m), similar to EN 60715, material: Steel, galvanized, passivated with a thick layer, Standard profile, color: silver

---

## NS 35/15 WH PERF 2000MM - DIN rail perforated

0806602

<https://www.phoenixcontact.com/us/products/0806602>



DIN rail perforated, Pack of 25 (50 m), similar to EN 60715, material: Steel, Galvanized, white passivated, Standard profile, color: white

# UVKB 4-FS(2,8)TP(2,4)234D/L - Feed-through terminal block



1954469

<https://www.phoenixcontact.com/us/products/1954469>

## NS 35/15 WH UNPERF 2000MM-VPE 10 - DIN rail, unperforated

1204135

<https://www.phoenixcontact.com/us/products/1204135>



DIN rail, unperforated, Pack of 10 (20 m), similar to EN 60715, material: Steel, Galvanized, white passivated, Standard profile, color: silver

---

## NS 35/15 AL UNPERF 2000MM - DIN rail, unperforated

1201756

<https://www.phoenixcontact.com/us/products/1201756>



DIN rail, unperforated, similar to EN 60715, material: Aluminum, uncoated, Standard profile, color: silver

# UVKB 4-FS(2,8)TP(2,4)234D/L - Feed-through terminal block



1954469

<https://www.phoenixcontact.com/us/products/1954469>

## NS 35/15 ZN PERF 2000MM - DIN rail perforated

1206599

<https://www.phoenixcontact.com/us/products/1206599>



DIN rail perforated, Pack of 25 (50 m), similar to EN 60715, material: Steel, galvanized, Standard profile, color: silver

---

## NS 35/15 ZN UNPERF 2000MM - DIN rail, unperforated

1206586

<https://www.phoenixcontact.com/us/products/1206586>



DIN rail, unperforated, Pack of 25 (50 m), similar to EN 60715, material: Steel, galvanized, Standard profile, color: silver

# UVKB 4-FS(2,8)TP(2,4)234D/L - Feed-through terminal block



1954469

<https://www.phoenixcontact.com/us/products/1954469>

## NS 35/15 CU UNPERF 2000MM-VPE 10 - DIN rail, unperforated

1201895

<https://www.phoenixcontact.com/us/products/1201895>



DIN rail, unperforated, Pack of 10 (20 m), similar to EN 60715, material: Copper, uncoated, Standard profile, color: copper-colored

---

## NS 35/15 CAP - End cap

1206573

<https://www.phoenixcontact.com/us/products/1206573>

DIN rail end piece, for DIN rail NS 35/15



# UVKB 4-FS(2,8)TP(2,4)234D/L - Feed-through terminal block



1954469

<https://www.phoenixcontact.com/us/products/1954469>

## NS 35/15-2,3 UNPERF 2000MM-VPE 10 - DIN rail, unperforated

1201798

<https://www.phoenixcontact.com/us/products/1201798>



DIN rail, unperforated, Pack of 10 (20 m), acc. to EN 60715, material: Steel, galvanized, passivated with a thick layer, Standard profile 2.3 mm, color: silver

---

## ZB 6:UNBEDRUCKT - Zack marker strip

1051003

<https://www.phoenixcontact.com/us/products/1051003>



Zack marker strip, Strip, white, unlabeled, can be labeled with: PLOTMARK, CMS-P1-PLOTTER, mounting type: snapped, for terminal block width: 6.2 mm, lettering field size: 6.15 x 10.5 mm, Number of individual labels: 10

# UVKB 4-FS(2,8)TP(2,4)234D/L - Feed-through terminal block



1954469

<https://www.phoenixcontact.com/us/products/1954469>

## ZB 6 CUS - Zack marker strip

0824992

<https://www.phoenixcontact.com/us/products/0824992>



Zack marker strip, can be ordered: Strip, white, labeled according to customer specifications, mounting type: snap into tall marker groove, for terminal block width: 6.2 mm, lettering field size: 6.15 x 10.5 mm, Number of individual labels: 10

---

## ZB 6,LGS:FORTL.ZAHLEN - Zack marker strip

1051016

<https://www.phoenixcontact.com/us/products/1051016>



Zack marker strip, Strip, white, labeled, can be labeled with: CMS-P1-PLOTTER, printed horizontally: consecutive numbers 1 ... 10, 11 ... 20, etc. up to 491 ... 500, mounting type: snapped, for terminal block width: 6.2 mm, lettering field size: 6.15 x 10.5 mm, Number of individual labels: 10

# UVKB 4-FS(2,8)TP(2,4)234D/L - Feed-through terminal block



1954469

<https://www.phoenixcontact.com/us/products/1954469>

## ZB 6,QR:FORTL.ZAHLEN - Zack marker strip

1051029

<https://www.phoenixcontact.com/us/products/1051029>



Zack marker strip, Strip, white, labeled, can be labeled with: CMS-P1-PLOTTER, Printed vertically: consecutive numbers 1 ... 10, 11 ... 20, etc. up to 491 ... 500, mounting type: snapped, for terminal block width: 6.2 mm, lettering field size: 6.15 x 10.5 mm, Number of individual labels: 10

---

## ZB 6,LGS:GLEICHE ZAHLEN - Zack marker strip

1051032

<https://www.phoenixcontact.com/us/products/1051032>



Zack marker strip, Strip, white, labeled, can be labeled with: CMS-P1-PLOTTER, printed horizontally: Identical numbers 1 or 2, etc. up to 100, mounting type: snapped, for terminal block width: 6.2 mm, lettering field size: 6.15 x 10.5 mm, Number of individual labels: 10



# UVKB 4-FS(2,8)TP(2,4)234D/L - Feed-through terminal block



1954469

<https://www.phoenixcontact.com/us/products/1954469>

## ZB 6,LGS:L1-N,PE - Marker for terminal blocks

1051414

<https://www.phoenixcontact.com/us/products/1051414>



Marker for terminal blocks, Strip, white, labeled, can be labeled with: CMS-P1-PLOTTER, horizontal: L1, L2, L3, N, PE, L1, L2, L3, N, PE, mounting type: snapped, for terminal block width: 6.2 mm, lettering field size: 6.15 x 10.5 mm, Number of individual labels: 10

---

## ZB 6,LGS:U-N - Marker for terminal blocks

1051430

<https://www.phoenixcontact.com/us/products/1051430>



Marker for terminal blocks, Strip, white, labeled, can be labeled with: CMS-P1-PLOTTER, printed horizontally: U, V, W, N, GND, U, V, W, N, GND, mounting type: snapped, for terminal block width: 6.2 mm, lettering field size: 6.15 x 10.5 mm, Number of individual labels: 10

# UVKB 4-FS(2,8)TP(2,4)234D/L - Feed-through terminal block



1954469

<https://www.phoenixcontact.com/us/products/1954469>

## UC-TM 6 - Marker for terminal blocks

0818085

<https://www.phoenixcontact.com/us/products/0818085>



Marker for terminal blocks, Sheet, white, unlabeled, can be labeled with: BLUEMARK ID COLOR, BLUEMARK ID, BLUEMARK CLED, PLOTMARK, CMS-P1-PLOTTER, mounting type: snapped, for terminal block width: 6.2 mm, lettering field size: 5.6 x 10.5 mm, Number of individual labels: 80

---

## UC-TM 6 CUS - Marker for terminal blocks

0824589

<https://www.phoenixcontact.com/us/products/0824589>



Marker for terminal blocks, can be ordered: by sheet, white, labeled according to customer specifications, mounting type: snap into tall marker groove, for terminal block width: 6.2 mm, lettering field size: 5.6 x 10.5 mm, Number of individual labels: 80

# UVKB 4-FS(2,8)TP(2,4)234D/L - Feed-through terminal block



1954469

<https://www.phoenixcontact.com/us/products/1954469>

## UCT-TM 6 - Marker for terminal blocks

0828736

<https://www.phoenixcontact.com/us/products/0828736>



Marker for terminal blocks, Sheet, white, unlabeled, can be labeled with: TOPMARK NEO, TOPMARK LASER, BLUEMARK ID COLOR, BLUEMARK ID, BLUEMARK CLED, THERMOMARK PRIME, THERMOMARK CARD 2.0, THERMOMARK CARD, mounting type: snapped, for terminal block width: 6.2 mm, lettering field size: 5.6 x 10.5 mm, Number of individual labels: 60

---

## UCT-TM 6 CUS - Marker for terminal blocks

0829602

<https://www.phoenixcontact.com/us/products/0829602>



Marker for terminal blocks, can be ordered: by sheet, white, labeled according to customer specifications, mounting type: snap into tall marker groove, for terminal block width: 6.2 mm, lettering field size: 5.6 x 10.5 mm, Number of individual labels: 60

# UVKB 4-FS(2,8)TP(2,4)234D/L - Feed-through terminal block



1954469

<https://www.phoenixcontact.com/us/products/1954469>

## CLIPFIX 35 - End bracket

3022218

<https://www.phoenixcontact.com/us/products/3022218>



Quick mounting end clamp for NS 35/7,5 DIN rail or NS 35/15 DIN rail, with marking option, width: 9.5 mm, color: gray

---

## CLIPFIX 35-5 - End bracket

3022276

<https://www.phoenixcontact.com/us/products/3022276>



Quick mounting end clamp for NS 35/7,5 DIN rail or NS 35/15 DIN rail, with marking option, with parking option for FBS...5, FBS...6, KSS 5, KSS 6, width: 5.15 mm, color: gray

# UVKB 4-FS(2,8)TP(2,4)234D/L - Feed-through terminal block



1954469

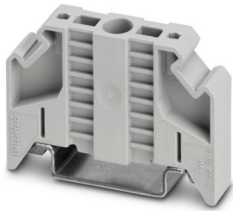
<https://www.phoenixcontact.com/us/products/1954469>

## E/NS 35 N - End bracket

0800886

<https://www.phoenixcontact.com/us/products/0800886>

End clamp, width: 9.5 mm, color: gray



---

## E/UK - End bracket

1201442

<https://www.phoenixcontact.com/us/products/1201442>

End bracket, Mounting on a DIN rail NS 32 or NS 35, material: PA, color: gray



# UVKB 4-FS(2,8)TP(2,4)234D/L - Feed-through terminal block



1954469

<https://www.phoenixcontact.com/us/products/1954469>

## E/UK 1 - End bracket

1201413

<https://www.phoenixcontact.com/us/products/1201413>



End clamps, for supporting the ends of double-level and three-level terminal blocks, width: 10 mm, color: gray

---

## PSBJ 3/13/4 - Test plug strip

0201304

<https://www.phoenixcontact.com/us/products/0201304>



Test plug strip, number of positions: 1, color: silver

# UVKB 4-FS(2,8)TP(2,4)234D/L - Feed-through terminal block



1954469

<https://www.phoenixcontact.com/us/products/1954469>

## PSB 3/10/4 - Test plug strip

0601292

<https://www.phoenixcontact.com/us/products/0601292>

Test plug strip, number of positions: 1, color: silver



---

## C-SCF 1/2,8X0,5 - Connector

3240152

<https://www.phoenixcontact.com/us/products/3240152>

Slip-on sleeve, non-insulated, 0.5 ... 1 mm<sup>2</sup>, 2.8 x 0.5



# UVKB 4-FS(2,8)TP(2,4)234D/L - Feed-through terminal block



1954469

<https://www.phoenixcontact.com/us/products/1954469>

## C-SCFI 1,5/2,8X0,5 - Connector

3240048

<https://www.phoenixcontact.com/us/products/3240048>



Slip-on sleeve, red, 0.5 ... 1.5 mm<sup>2</sup>, 2.8 x 0.5

---

## C-SCF 1/2,8X0,8 - Connector

3240153

<https://www.phoenixcontact.com/us/products/3240153>



Slip-on sleeve, non-insulated, 0.5 ... 1 mm<sup>2</sup>, 2.8 x 0.8



# UVKB 4-FS(2,8)TP(2,4)234D/L - Feed-through terminal block



1954469

<https://www.phoenixcontact.com/us/products/1954469>

## C-SCFI 1,5/2,8X0,8 - Connector

3240049

<https://www.phoenixcontact.com/us/products/3240049>



Slip-on sleeve, red, 0.5 ... 1.5 mm<sup>2</sup>, 2.8 x 0.8

---

## C-SCF 1,5/6,3X0,8 - Connector

3240156

<https://www.phoenixcontact.com/us/products/3240156>



Slip-on sleeve, non-insulated, 0.5 ... 1.5 mm<sup>2</sup>, 6.3 x 0.8

# UVKB 4-FS(2,8)TP(2,4)234D/L - Feed-through terminal block



1954469

<https://www.phoenixcontact.com/us/products/1954469>

## C-SCFI 1,5/6,3X0,8 - Connector

3240052

<https://www.phoenixcontact.com/us/products/3240052>



Slip-on sleeve, red, 0.5 ... 1.5 mm<sup>2</sup>, 6.3 x 0.8

---

## C-SCF 2,5/6,3X0,8 - Connector

3240159

<https://www.phoenixcontact.com/us/products/3240159>



Slip-on sleeve, non-insulated, 1.5 ... 2.5 mm<sup>2</sup>, 6.3 x 0.8

# UVKB 4-FS(2,8)TP(2,4)234D/L - Feed-through terminal block



1954469

<https://www.phoenixcontact.com/us/products/1954469>

## C-SCFI 2,5/6,3X0,8 - Connector

3240055

<https://www.phoenixcontact.com/us/products/3240055>



Slip-on sleeve, blue, 1.5 ... 2.5 mm<sup>2</sup>, 6.3 x 0.8

---

## C-SCF 6/6,3X0,8 - Connector

3240160

<https://www.phoenixcontact.com/us/products/3240160>



Slip-on sleeve, non-insulated, 4 ... 6 mm<sup>2</sup>, 6.3 x 0.8

# UVKB 4-FS(2,8)TP(2,4)234D/L - Feed-through terminal block



1954469

<https://www.phoenixcontact.com/us/products/1954469>

## C-SCFI 6/6,3X0,8 - Connector

3240056

<https://www.phoenixcontact.com/us/products/3240056>



Slip-on sleeve, yellow, 4 ... 6 mm<sup>2</sup>, 6.3 x 0.8

---

## PT/FS 2,8 - Insulating sleeve

1406700

<https://www.phoenixcontact.com/us/products/1406700>



Insulating sleeve, as touch protection, slide onto the conductor before for 2.8 slip-on sleeves

# UVKB 4-FS(2,8)TP(2,4)234D/L - Feed-through terminal block



1954469

<https://www.phoenixcontact.com/us/products/1954469>

## PT/FS 6,3 - Insulating sleeve

0604707

<https://www.phoenixcontact.com/us/products/0604707>



Insulating sleeve, as touch protection, slide onto the conductor before for 6.3 slip-on sleeves

---

Phoenix Contact 2024 © - all rights reserved

<https://www.phoenixcontact.com>

Phoenix Contact USA  
586 Fulling Mill Road  
Middletown, PA 17057, United States  
(+717) 944-1300  
[info@phoenixcon.com](mailto:info@phoenixcon.com)