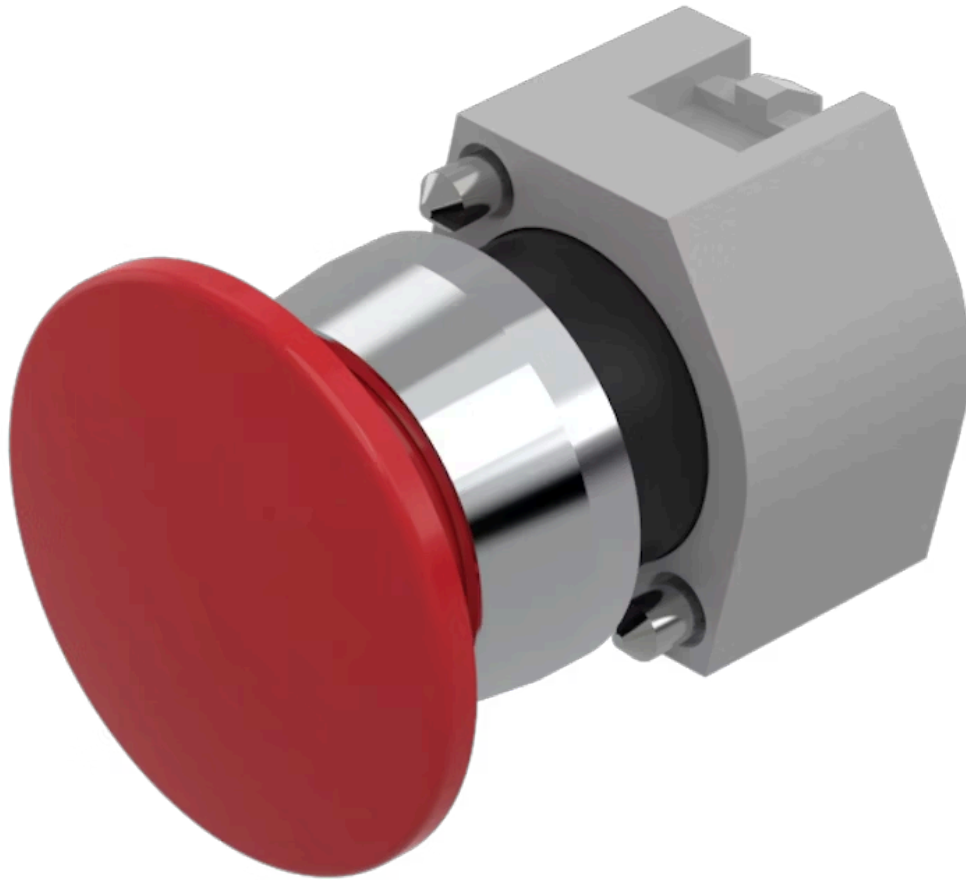


Actuator

704.075.3



<https://eao.com/p/704.075.3>

Your product:



704.075.3 Actuator

FRONT

Front form:	round
Front bezel material:	Aluminium
Front bezel colour:	Nature
Front dimension:	Ø 40 mm

MOUNTING

Mounting type:	Panel mounting
Design:	raised

OPERATING-/INDICATION PART

Lens material:	Plastic
Lens colour:	Red
Lens shape:	mushroom-head
Lens optics:	opaque
Lens illumination:	non illuminative

ELECTRICAL CHARACTERISTICS

Standards:	The switches comply with the "Standards for low-voltage switching devices" DIN EN 60947-1
------------	---

MECHANICAL CHARACTERISTIC

Weight:	0.047 kg
Operating Travel:	ca. 5.8 mm ± 0.2 mm

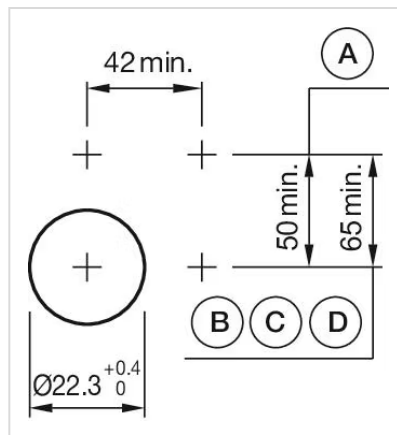
Switching action:	Maintained
Operating force:	8 N
Mechanical lifetime:	≤50 000 cycles of operation

AMBIENT CONDITION

IP Protection:	IP65 front side
Storage temperature:	– 40 °C ... + 85 °C
Operating temperature:	– 40 °C ... + 55 °C

OTHER

Marking:	Stop
max. number of switching elements:	3
Housing colour:	Grey
Short Description:	Actuator, Ø 40 mm, mushroom-head, non illuminative, Red, Plastic, opaque, round, Nature, Aluminium, anodised, Maintained
Housing material:	Plastic
Mounting cut-outs:	

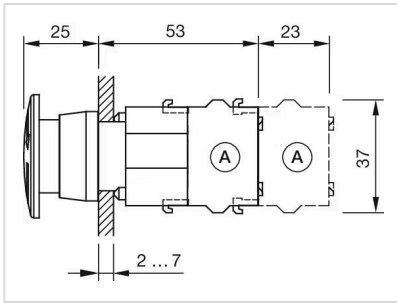


A = Screw terminal
 B = Push-in terminal (PIT)
 C = Plug-in terminal 6.3 mm x 0.8 mm
 D = Double plug-in terminal 6.3 mm x 0.8 mm

Wiring diagrams:



Dimension drawings:



A = Screw terminal