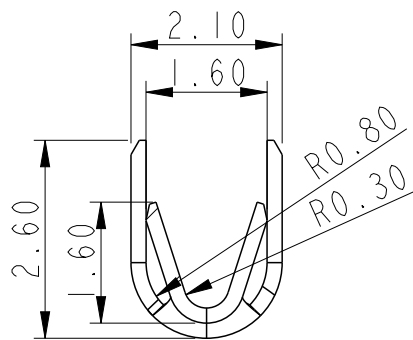


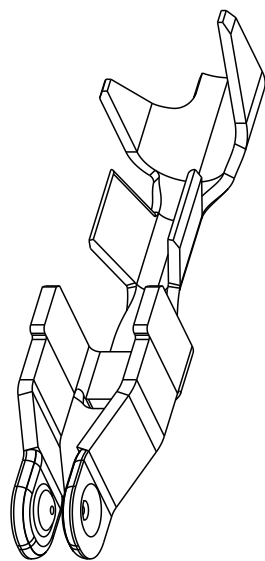
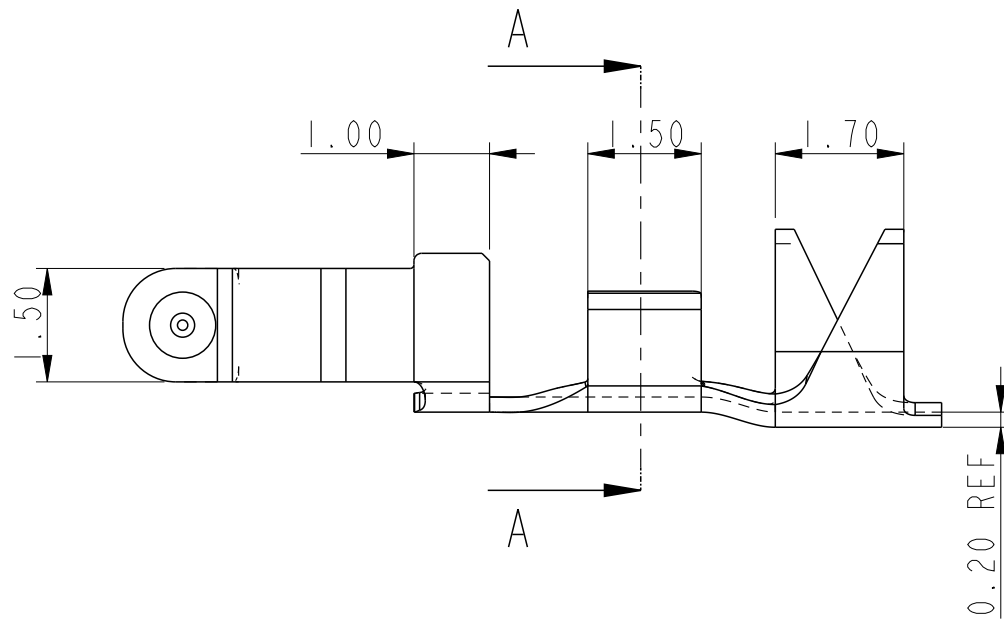
| | |
|-------------|----------------|
| LOOSE PIECE | 10120045-R01LF |
| ON STRIP | 10120045-R02LF |

- NOTE: -
- 1.TERMINAL MATERIAL: COPPER ALLOY
 - 2.PLATING FINISH:
AU/GXT OVER NICKEL IN CONTACT AREA
TIN OVER NICKEL IN TERMINAL AREA
 - 3.LEAD FREE OR RoHS DIRECTIVE LABELING
TO BE PROVIDED AS PER GS-14-920
 - 4."LF" SUFFIX TO THE PRODUCT NUMBER FOR RoHS
COMPATIBLE/LEAD FREE VERSION
 - 5.THIS PRODUCT MEETS EUROPEAN UNION
DIRECTIVES AND OTHER COUNTRY
REGULATIONS AS DESCRIBED IN GS-47-0004
 - 6.WIRE RANGE: 22~30 AWG, STRANDED
 - 7.MAX INSULATION DIA: 1.5
 - 8.THIS PRODUCT HAS NOT COMPLETED VALIDATION TESTING

SCALE 10:1







SECTION A-A



SCALE 8:1

PRELIMINARY

| | | | | | | | | | | | | | |
|---|---------------------------------------|---------|-------|---|-------------------------------|------------|--|--|--|------------------------|----|------------------------------|------|
| spec ref | | | | dr Mathew Jacob | | 2015/03/30 | | <div>projection</div> <div></div> | <div>MM</div> <div></div> | size | A3 | scale | 10:1 |
| tolerance std | TOLERANCES UNLESS OTHERWISE SPECIFIED | | | eng Mathew Jacob | | 2015/07/06 | | | | ecn no - | | | |
| | | | | chr - | | - | | | | | | | |
| ISO 406 | | | | appr - | | - | | product family | | ROTACONNECT | | rel level Preliminary | |
| ISO 1101 | | | | | | | | | | | | | |
| surface  | linear | 0.X | ±0.20 |  | title CTW RECEPTACLE TERMINAL | | | | dwg no 10120045-R0X | | | | rev |
| | | 0.XX | ±0.13 | | | | | | | | | | |
| | | 0.XXX | ±0.05 | | | | | | | | | | |
| | ISO 1302 | angular | 0° | ±2° | www.fci.com | cat. no. | | SEE TABLE | | Product - Customer Drw | | | |