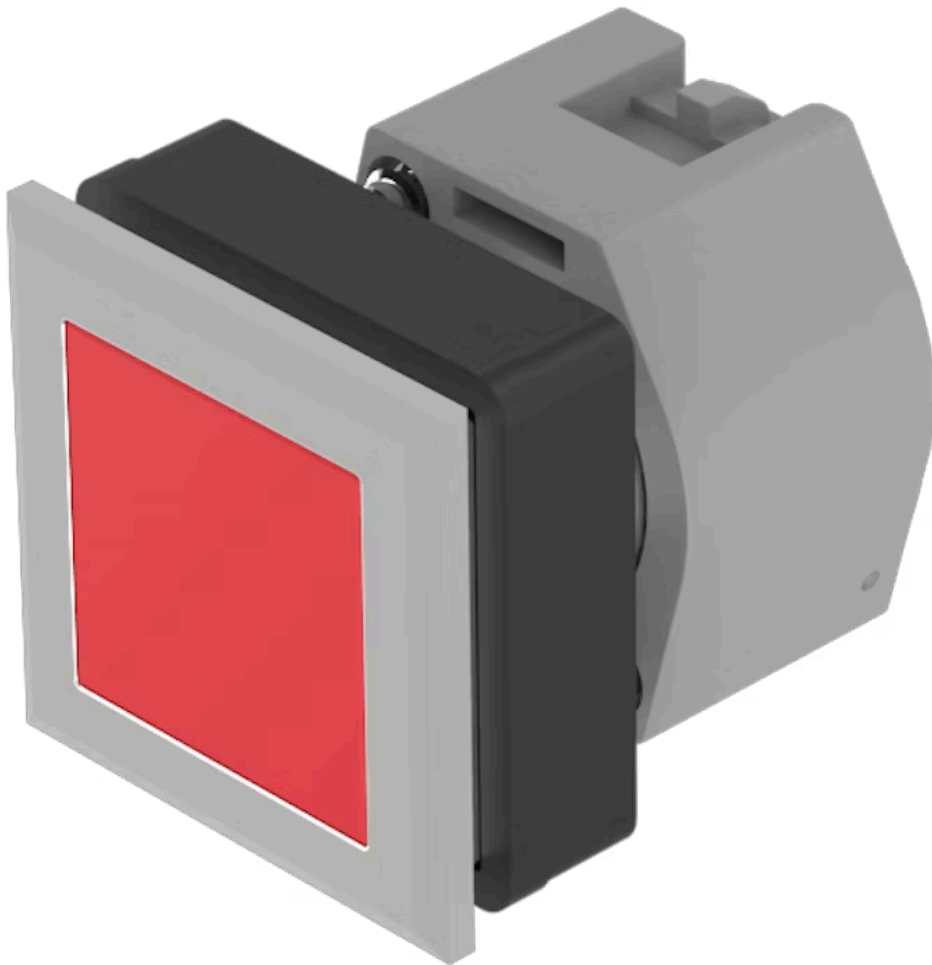


Actuator

704.210.208

Distribution by
DigiKey

DigiKey



<https://digikey.eao.com/p/704.210.208>

Your product:



704.210.208 Actuator

FRONT

Front bezel colour:	Silver
Front form:	square
Front dimension:	35 mm x 35 mm
Front bezel material:	Plastic

MOUNTING

Mounting cut-out:	30 mm x 30 mm
Design:	flush

OPERATING-/INDICATION PART

Lens illumination:	non illuminative
Lens shape:	flush
Lens colour:	Red
Lens material:	Plastic
Lens optics:	transparent

ELECTRICAL CHARACTERISTICS

Standards:	The switches comply with the "Standards for low-voltage switching devices" DIN EN 60947-1
------------	---

MECHANICAL CHARACTERISTIC

Operating force:	6.2 N
Mechanical lifetime:	≤3 Mio. cycles of operation

Operating Travel: ca. 5.8 mm ± 0.2 mm

Switching action: Momentary

Weight: 0.051 kg

AMBIENT CONDITION

Operating temperature: – 40 °C ... + 55 °C

Storage temperature: – 40 °C ... + 85 °C

IP Protection: IP65 front side

OTHER

Housing material: Plastic

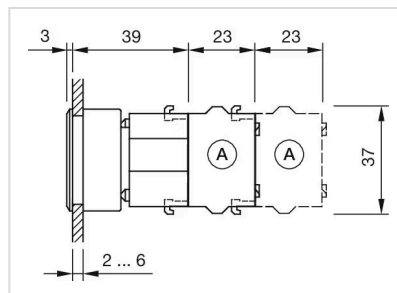
Short Description: Actuator, 30 mm x 30 mm, 35 mm x 35 mm, flush, non illuminative, Red, Plastic, transparent, square, Silver, Plastic, Momentary

Housing colour: Black

max. number of switching elements: 3

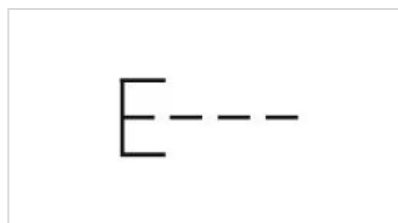
Hints: Max. 3 switching elements can be clipped on

Dimension drawings:

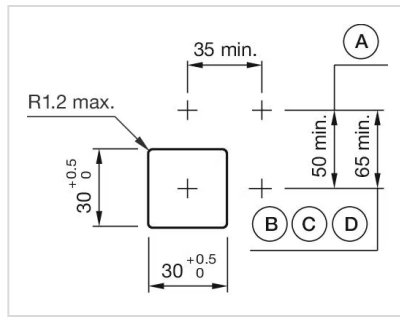


A = Screw terminal

Wiring diagrams:



Mounting cut-outs:



A = Screw terminal
 B = Push-in terminal (PIT)
 C = Plug-in terminal 6.3 mm x 0.8 mm
 D = Double plug-in terminal 6.3 mm x 0.8 mm