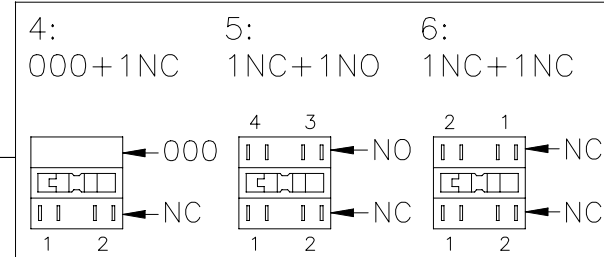


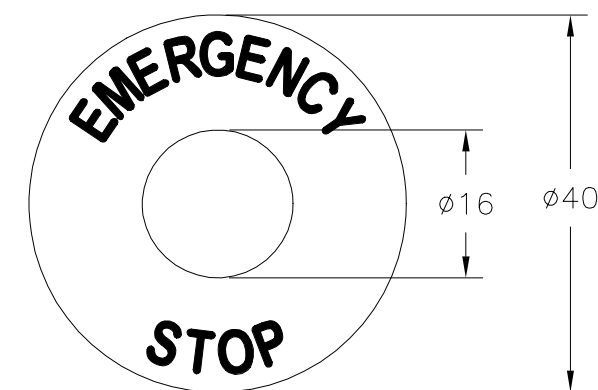
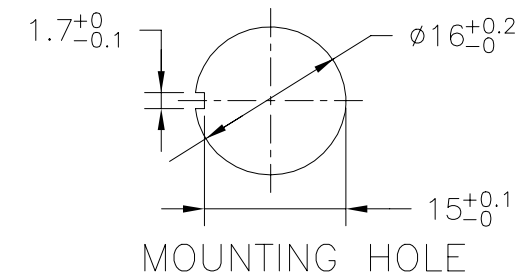
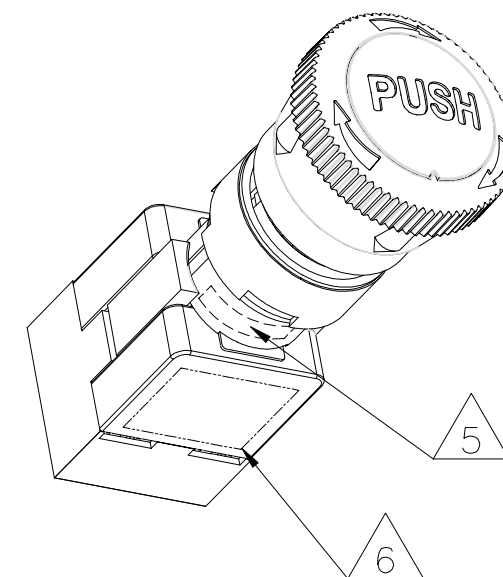
TE SMART PART NUMBER:

PBES16N 0 R

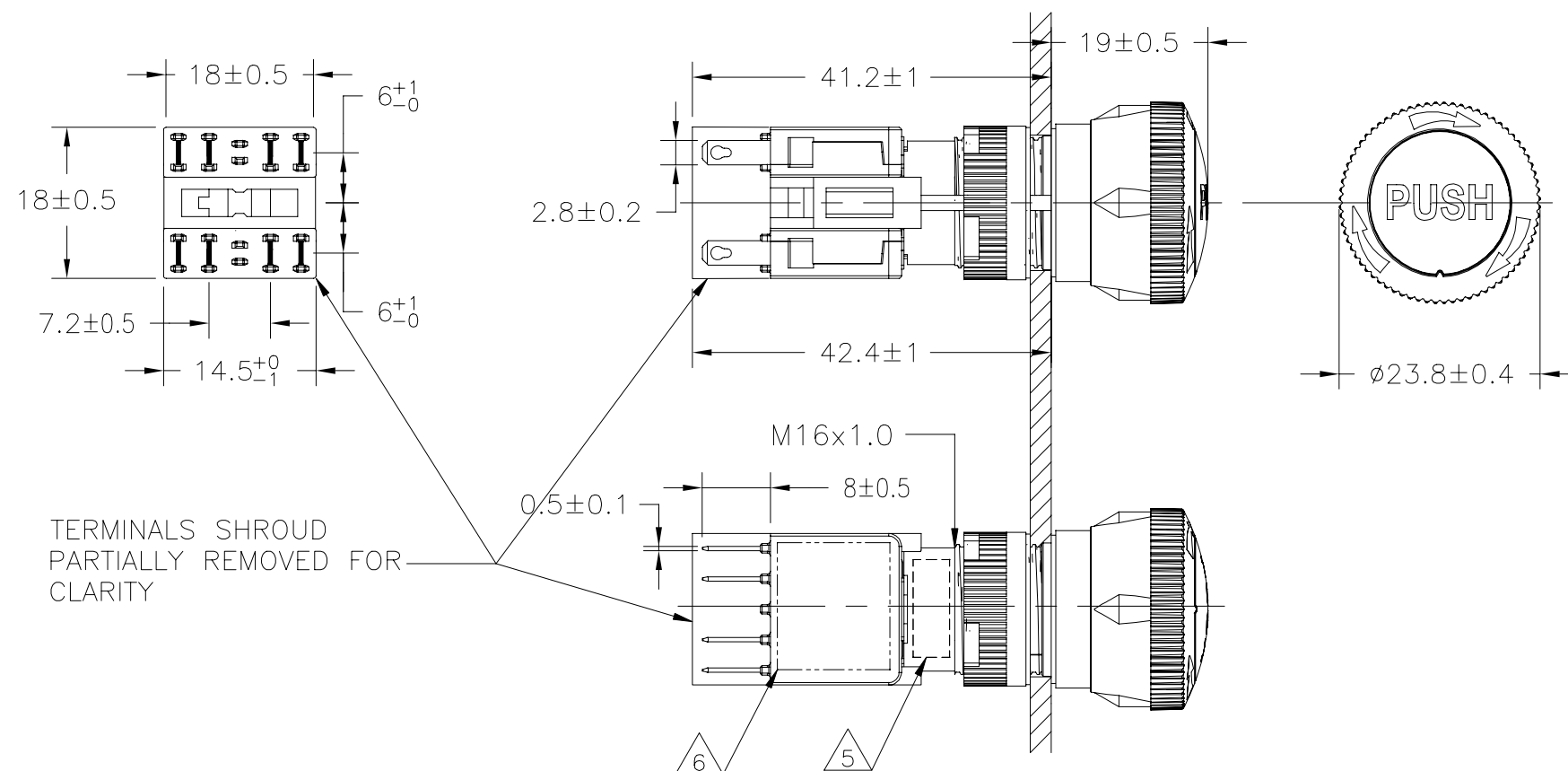
FUNCTION



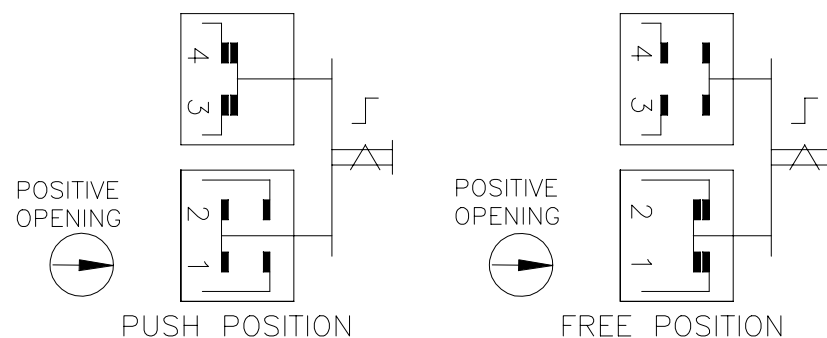
REVISIONS					
P	LTR	DESCRIPTION	DATE	DWN	APVD
1		NEW DRAWING	24DEC2020	GSK	AS



IDENTIFICATION PLATE



TERMINALS SHROUD
PARTIALLY REMOVED FOR
CLARITY



FUNCTION DIAGRAM
FOR 5:1NC+1NO

PRELIMINARY

THIS DRAWING IS A CONTROLLED DOCUMENT.		DWN 24DEC2020 SATHISH KUMAR G	TE Connectivity		
		CHK 24DEC2020 ALEXANDER, SHARPE			
		APVD 24DEC2020 ALEXANDER, SHARPE	NAME SWITCH, EMERGENCY STOP, PBES16N SERIES, 23.8MM DIAMETER NO LAMP, PUSH TO LOCK, RIGHT TURN TO RELEASE, 16MM PANEL DIAMETER		
DIMENSIONS: mm		PRODUCT SPEC	SIZE	CAGE CODE	DRAWING NO
		APPLICATION SPEC	A3	00779	C-2381881
		WEIGHT	RESTRICTED TO		
MATERIAL		FINISH	CUSTOMER DRAWING		
			SCALE	SHEET	REV
			NTS	1 of 4	1

PRODUCT SPECIFICATIONS :

MECHANICAL LIFE : > 100,000 OPERATIONS
ELECTRICAL LIFE : > 50,000 OPERATIONS
MOTION TOLERANCE : < 20 OPERATIONS / MINUTE
(MECHANICAL AND ELECTRICAL LIFE)
DEGREE OF PROTECTION : IP 65
PANEL THICKNESS : 0.5 mm TO 5 mm
MOUNTING TORQUE : 1.1 N-m
MAX. INSULATION VOLTAGE : 1500VAC, 60Hz, 10mA, 1MINUTE
INSULATION RESISTANCE : 100 MΩ @ 500VDC, 100mA, 1MINUTE
STORAGE TEMPERATURE : -40°C TO +85°C
OPERATING TEMPERATURE : -25°C TO +70°C
CONTACT RESISTANCE : <= 50 mΩ (INITIAL)
OPERATING FORCES : PUSH-LOCK 20±⁰₁₀ N, TURN-RESET 0.06 N-m
OPERATING TRAVEL : PUSH-LOCK 3.3±0.3mm, TURN-RESET CW 30°

POLLUTION DEGREE : 3
CONDITIONAL SHORT-CIRCUIT CURRENT: 1000A
ELECTRICAL RATINGS:

RATED INSULATION VOLTAGE (<i>Ui</i>)	300V	
CONVENTIONAL ENCLOSED THERMAL CURRENT (<i>I</i> _{the})	5A	
RATED OPERATIONAL VOLTAGE (<i>Ue</i>)	125V	250V
UTILIZATION CATEGORY	RATED OPERATIONAL CURRENT (<i>Ie</i>)	
AC-15	3	1.5
DC-13	0.22	0.11

U_{imp} : 2.5kV

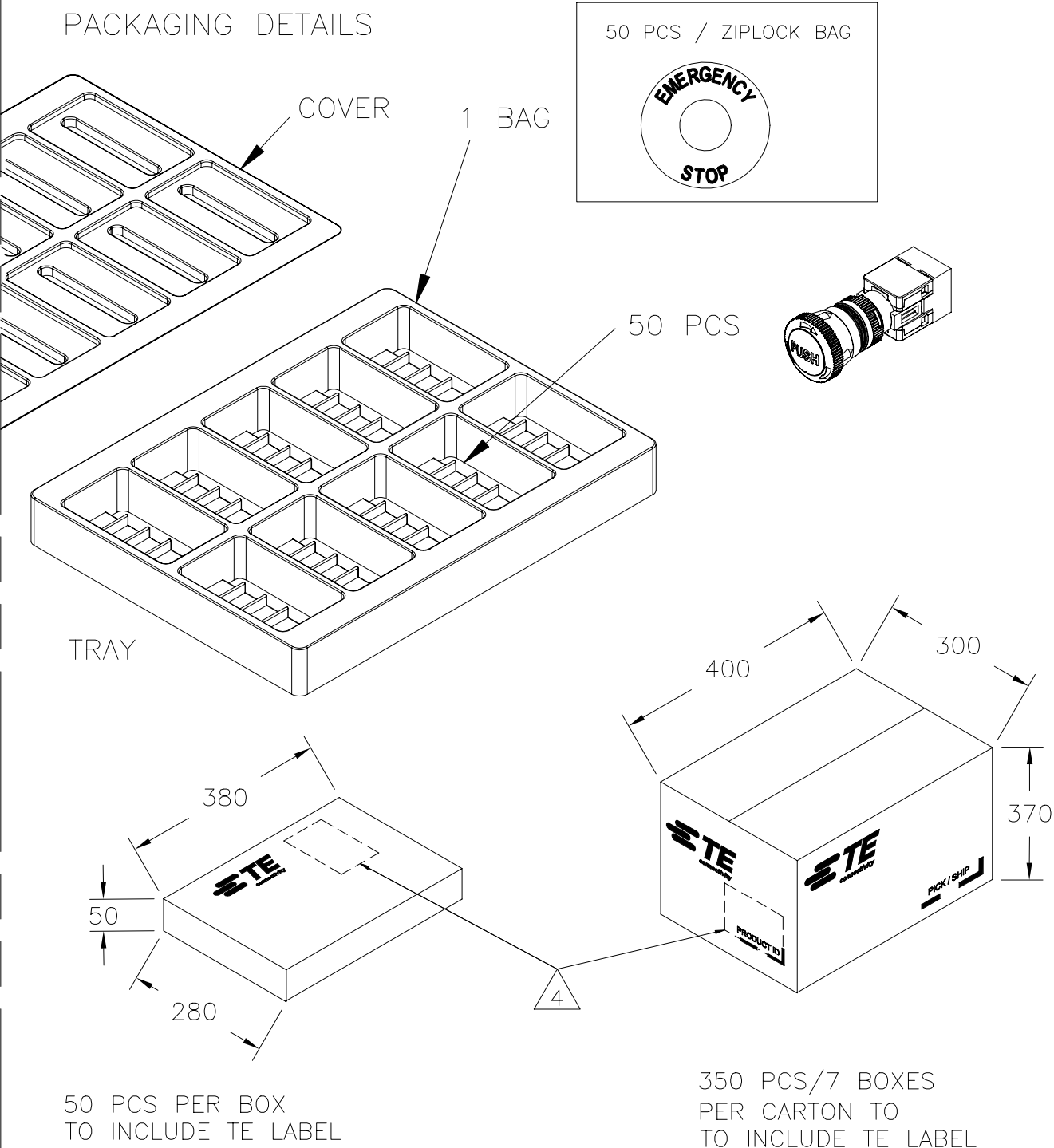
APPLICABLE STANDARDS : EN/IEC 60947-5-1, EN/IEC 60947-5-5

MATERIALS:

- ① ACTUATOR HOUSING : POLYPHTHALAMIDE (UL94-V0), BLACK
② CONTACT BLOCK HOUSING : POLYPHTHALAMIDE (UL94-V0)/
POLYBUTYLENE TEREPHTHALATE (UL94-V0),BLACK/WHITE
③ ACTUATOR : POLYAMIDE (UL94-V0), RED
④ GASKET : RUBBER, BLACK
TERMINAL / CONTACT : COPPER ALLOY WITH SILVER ALLOY, Au PLATED
⑤ MOUNTING RING : POLYCARBONATE (UL94-V0), BLACK

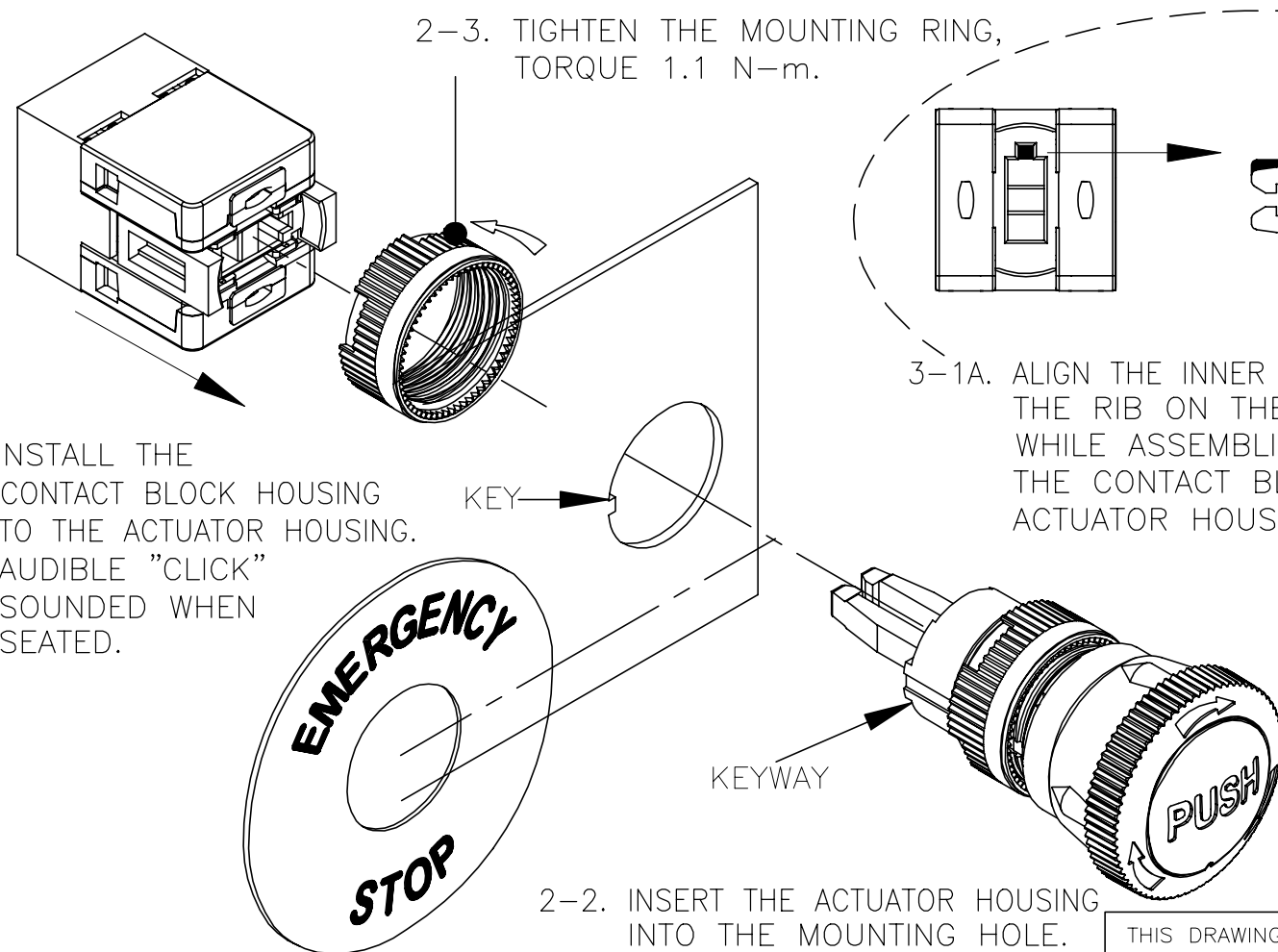
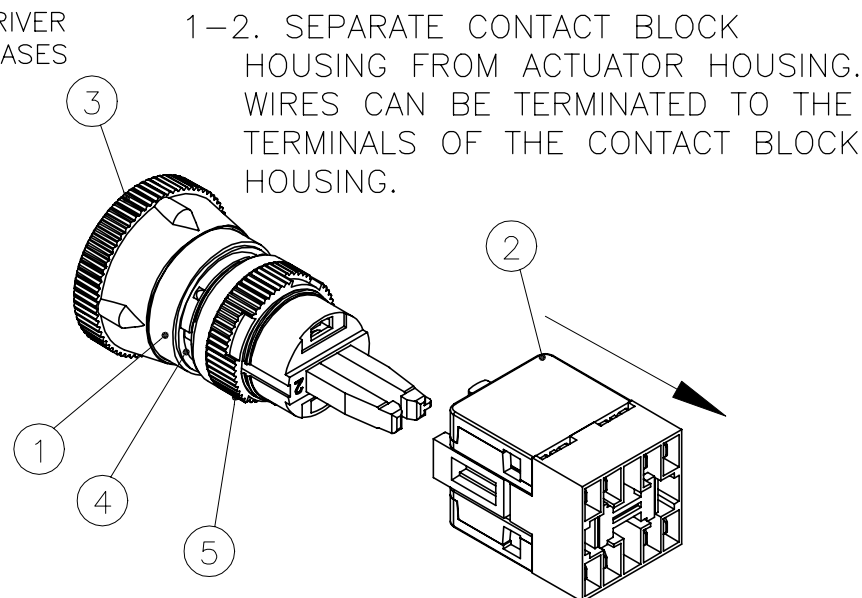
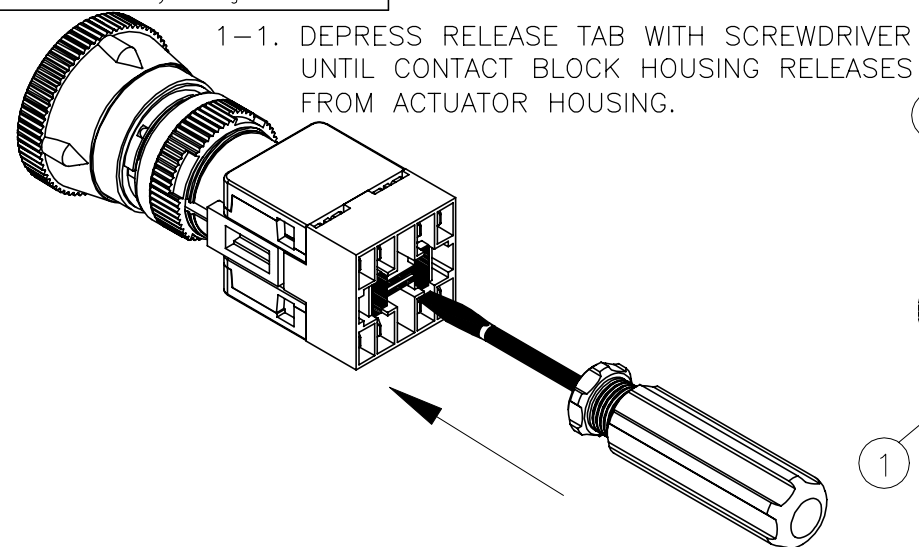
REVISIONS					
P	LTR	DESCRIPTION	DATE	DWN	APVD
	-	SEE SHEET 1	-	-	-

PACKAGING DETAILS



THIS DRAWING IS A CONTROLLED DOCUMENT.		DWN 24DEC2020 SATHISH KUMAR G	TE Connectivity		
		CHK 24DEC2020 ALEXANDER, SHARPE			
		APVD 24DEC2020 ALEXANDER, SHARPE	NAME SWITCH, EMERGENCY STOP, PBES16N SERIES, 23.8MM DIAMETER NO LAMP, PUSH TO LOCK, RIGHT TURN TO RELEASE, 16MM PANEL DIAMETER		
DIMENSIONS: mm		PRODUCT SPEC	SIZE		CAGE CODE
		APPLICATION SPEC	DRAWING NO		RESTRICTED TO
		WEIGHT	A3 00779		C=2381881
MATERIAL		FINISH	CUSTOMER DRAWING		SCALE NTS
			SHEET 2 of 4		REV 1

PRELIMINARY



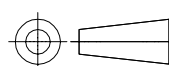
3-1. INSTALL THE CONTACT BLOCK HOUSING TO THE ACTUATOR HOUSING. AUDIBLE "CLICK" SOUNDED WHEN SEATED.

3-1A. ALIGN THE INNER SLOT TO THE RIB ON THE PLASTIC HOOK WHILE ASSEMBLING THE CONTACT BLOCK HOUSING WITH THE ACTUATOR HOUSING.

PRELIMINARY

THIS DRAWING IS A CONTROLLED DOCUMENT.

DIMENSIONS:
mm



MATERIAL

TOLERANCES UNLESS OTHERWISE SPECIFIED:

0 PLC ± -
1 PLC ± -
2 PLC ± -
3 PLC ± -
4 PLC ± -
ANGLES ± -
FINISH

DWN 24DEC2020

CHK SATHISH KUMAR G

24DEC2020

ALEXANDER, SHARPE

APVD 24DEC2020

ALEXANDER, SHARPE

PRODUCT SPEC

APPLICATION SPEC

WEIGHT

CUSTOMER DRAWING

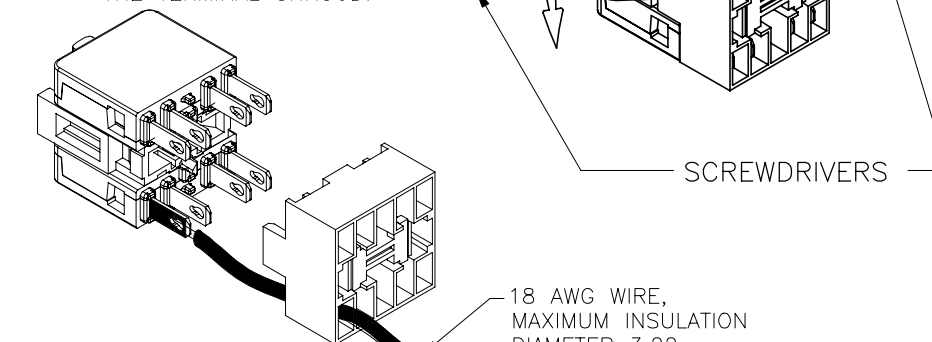
REVISIONS

P	LTR	DESCRIPTION	DATE	DWN	APVD
	-	SEE SHEET 1	-	-	-

SOLDER TERMINATIONS:

4-1. REMOVE TERMINAL SHROUD-AFFIX TWO SCREWDRIVERS ABOUT THE TABS OF THE SHROUD AND GENTLY APPLY FORCE SO AS TO RELEASE SHROUD FROM THE CONTACT BLOCK HOUSING.

4-2. ROUTE WIRE THROUGH THE TERMINAL SHROUD.

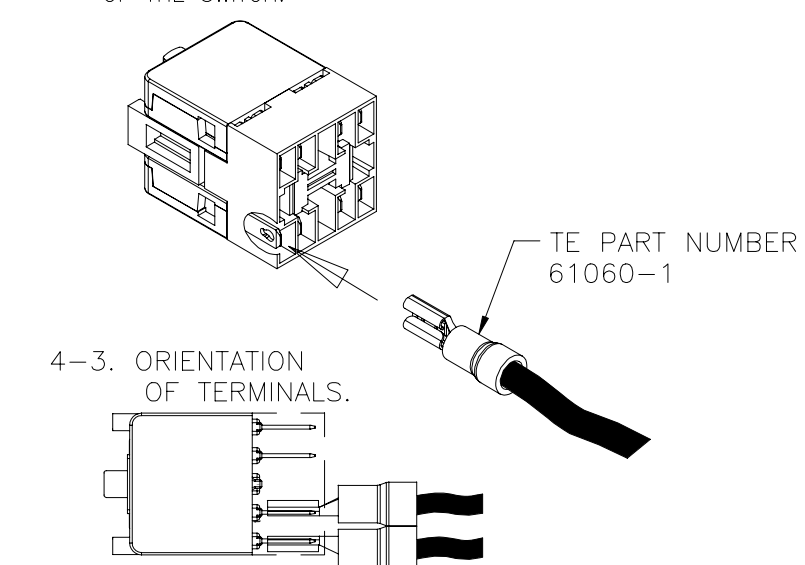


4-3. SOLDER WIRES TO TERMINALS. SOLDERING TEMPERATURE IS 360°C FOR 3 SECONDS.

FASTON TERMINAL TERMINATION

4-1. CRIMP TE FASTON RECEPTACLE 110 SERIES TERMINAL PART NUMBER 61060-1 TO 18 AWG WIRE, MAXIMUM INSULATION DIAMETER 2.54MM

4-2. MATE THE TERMINAL TERMINATED TO WIRE TO THE TERMINAL OF THE SWITCH.



TE Connectivity

NAME
SWITCH, EMERGENCY STOP, PBES16N SERIES, 23.8MM DIAMETER
NO LAMP, PUSH TO LOCK, RIGHT TURN TO RELEASE,
16MM PANEL DIAMETER



SIZE CAGE CODE DRAWING NO RESTRICTED TO
A3 00779 C-2381881

SCALE NTS SHEET 3 of 4 REV 1

P	LTR	DESCRIPTION	DATE	DWN	APVD
	—	SEE SHEET 1	—	—	—

FUNCTION	LAMP RATING	LAMP TYPE	DESCRIPTION	TE SMART PART NUMBER	TE PART NUMBER 
000 + 1NC	NO LAMP	NO LAMP	PBES16 23.8 RB NO LAMP 000 1NC	PBES16N40R	2381881-1
1NC + 1NO	NO LAMP	NO LAMP	PBES16 23.8 RB NO LAMP 1NC 1NO	PBES16N50R	2381881-2
1NC + 1NC	NO LAMP	NO LAMP	PBES16 23.8 RB NO LAMP 1NC 1NC	PBES16N60R	2381881-3

NOTES:

1. COMPLIANCE: THE CURRENT STATEMENT OF COMPLIANCE IS AVAILABLE AT TE.COM.
2. NAME PLATE IS PACKAGED SEPARATELY FROM THE SWITCH.
3. AGENCY CONFORMANCE – UL AND TUV,
-  REFERENCE TE PACKAGING LABELS FOR AGENCY INFORMATION.
-  PART MARKING:

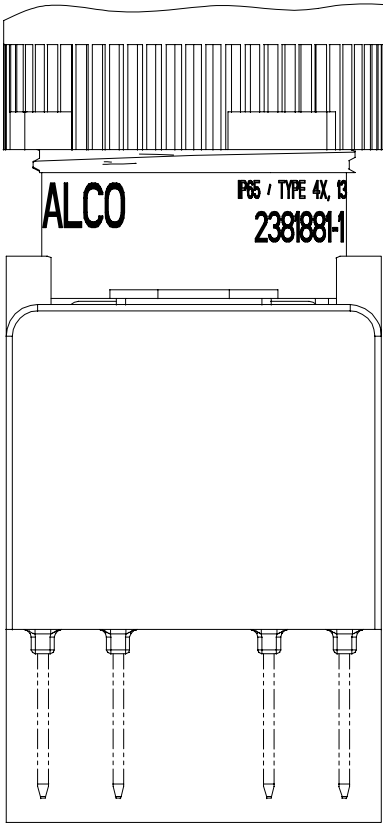
 PART MARKING:

ACTUATOR LABEL MARKING:

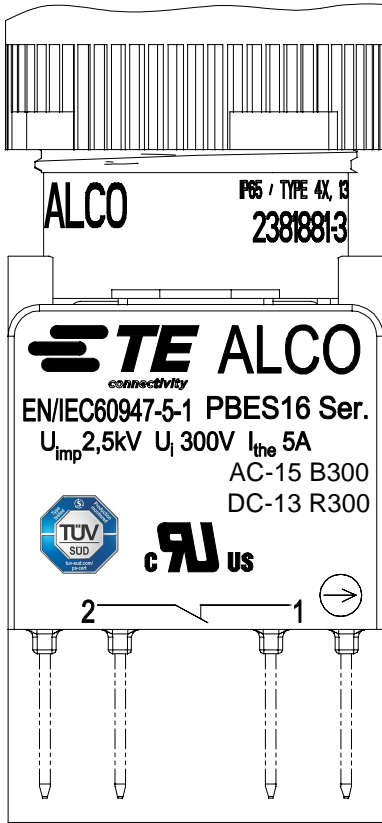
ALCO IP65 / TYPE 4X, 13 
2381881-□

↑
TE PART NUMBER,
SEE TABLE, SHEET 4 OF 4

FUNCTION TERMINAL BLOCK 000




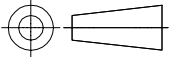
FUNCTION TERMINAL BLOCK NC



FUNCTION TERMINAL BLOCK NO



PRELIMINARY

THIS DRAWING IS A CONTROLLED DOCUMENT.		DWN 24DEC2020 SATHISH KUMAR G	 TE Connectivity		
		CHK 24DEC2020 ALEXANDER, SHARPE			
		APVD 24DEC2020 ALEXANDER, SHARPE	NAME SWITCH, EMERGENCY STOP, PBES16N SERIES, 23.8MM DIAMETER NO LAMP, PUSH TO LOCK, RIGHT TURN TO RELEASE, 16MM PANEL DIAMETER		
DIMENSIONS: mm		TOLERANCES UNLESS OTHERWISE SPECIFIED:	PRODUCT SPEC		
		0 PLC ± – 1 PLC ± – 2 PLC ± – 3 PLC ± – 4 PLC ± – ANGLES ± –	APPLICATION SPEC		
MATERIAL —		FINISH —	WEIGHT		
			CUSTOMER DRAWING		
			SIZE A3	CAGE CODE 00779	RESTRICTED TO —
			DRAWING NO C-2381881		
			SCALE NTS	SHEET 4 OF 4	REV 1