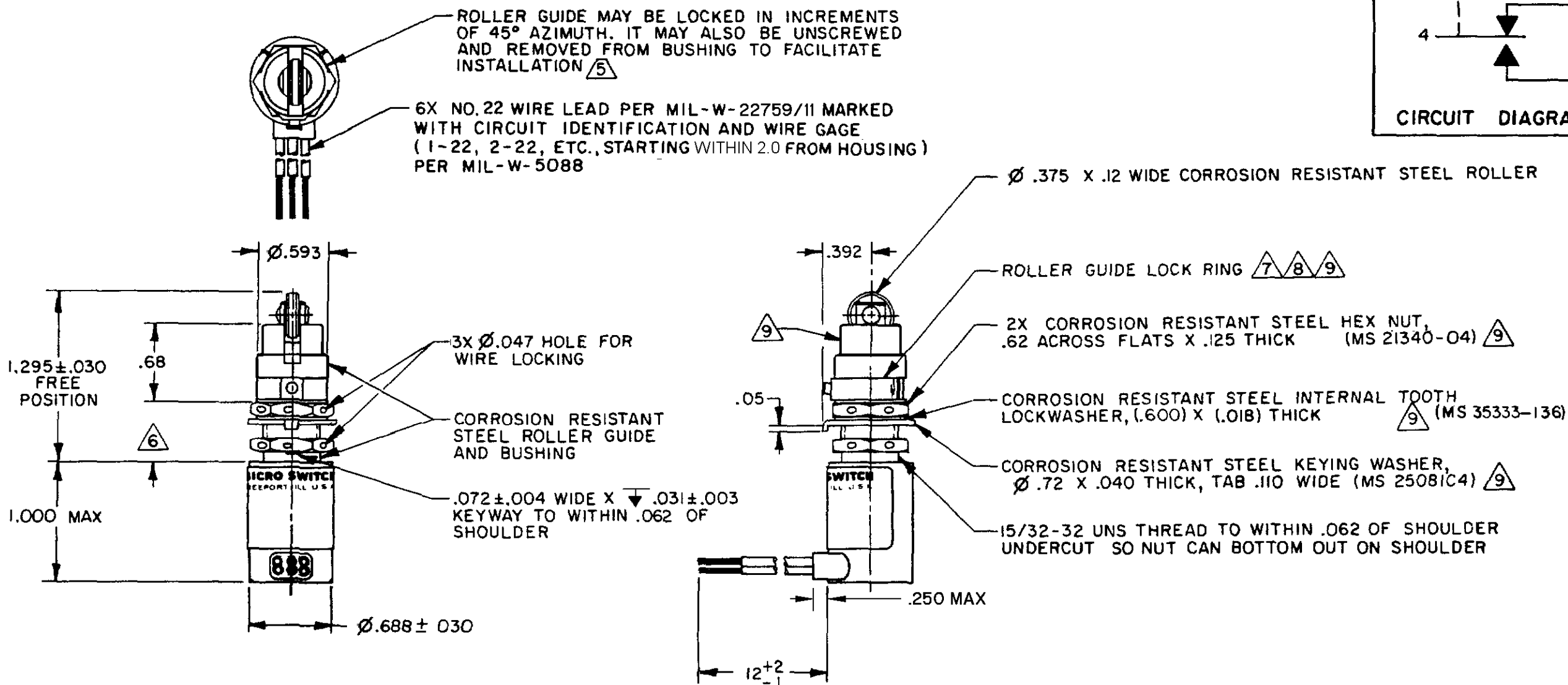
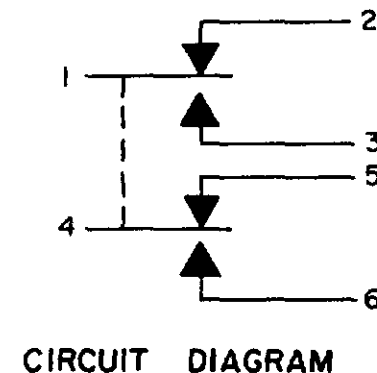


**MICRO SWITCH**  
FREEPORT ILLINOIS U.S.A.  
A DIVISION OF HONEYWELL  
FED MFG CODE 91929

## SWITCH - ENCLOSED

CATALOG LISTING  
**622EN531-I**  
CUSTOMER PART NO.  
19207-12292794-4



Furnished under United States Government Contract No. \_\_\_\_\_  
Shall not be either released outside the Government, or used, duplicated or disclosed in whole or in part for manufacture or procurement, without the written permission of MICRO SWITCH, A Division of Honeywell, except for: (i) emergency repair or overhaul work by or for the Government, where the item or process concerned is not otherwise reasonably available to enable timely performance of the work; or (ii) release to a foreign government, as the interests of the United States may require, provided that in either case the release, use, duplication or disclosure hereof shall be marked on any reproduction hereof in whole or in part.

### NOTES

- 1 - CORROSION RESISTANT STEEL ENCLOSURE
- 2 - SWITCH SEALED PER MIL-PRF-8805 SYMBOL 4
- 3 - CIRCUIT DIAGRAM, CATALOG LISTING, CUSTOMER PART NO. AND REVISION LETTER ARE SHOWN ON NAMEPLATE
- 4 - COINCIDENCE OF OPERATING AND RELEASING POINTS: .010 INCH OF PLUNGER TRAVEL
- (5) TO ADJUST ROLLER DIRECTION REMOVE ROLLER GUIDE LOCK RING SCREW ROLLER GUIDE TO DESIRED DIRECTION. SECURE BY REPLACING ROLLER GUIDE LOCK RING
- (6) ROLLER GUIDE LOCATION CAN VARY BETWEEN .292 AND .450 WHILE MAINTAINING .125 MIN OVERTRAVEL
- (7) REPLACEMENT ROLLER GUIDE AND LOCK RING - PACKET 15PA105
- (8) REPLACEMENT LOCK RING - PACKET 15PA107
- (9) HARDWARE MAY BE PACKAGED UNASSEMBLED PER MIL-PRF-8805

THIRD ANGLE PROJECTION

SCALE FULL

DO NOT SCALE PRINT

TOLERANCES  
APPLY TO DESIGN UNITS CONVERSIONS ARE ONLY FOR REFERENCE UNLESS NOTED TOLERANCES ARE 2

REFERENCE		UNLESS NOTED OTHERWISE		TOLERANCES	
	DIM	TOL		DIM	TOL
	mm	mm/in		in	mm/in
NO PLACES	K	1/64			
ONE PLACE	K K	0.4/0.16		K K	0.4/0.16
TWO PLACES	K K K	0.15/0.06		K K K	0.38/0.15
THREE PLACES					