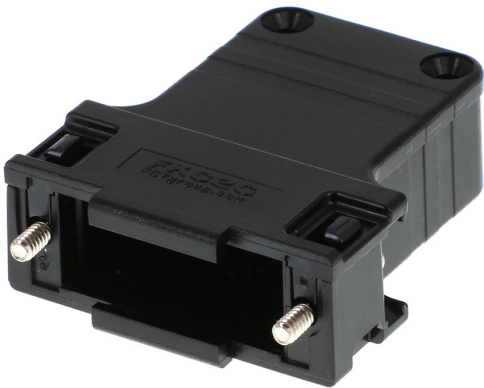





Part Number : 1731110025
Product Description : FCT Plastic Backshell for D-Sub Connector, Black, Shell Size 2, Straight Cable Outlet, Large Inner Chamber, with #4-40 Locking Screws, Individually Packed
Series Number : 173111
Status : Active
Product Category : D-Sub Backshells
Engineering Number : FKC2GE



Product Environment Compliance

Compliance

GADSL/IMDS	Not Relevant
China RoHS	
EU ELV	Not Relevant
Low-Halogen Status	Not Low-Halogen per IEC 61249-2-21
REACH SVHC	Contains Lead per D(2024)4144-DC (27 June 2024)
EU RoHS	Not Compliant per EU 2015/863

Multiple Part Product Compliance Statements

- Eu RoHS
- REACH SVHC
- Low-Halogen

Multiple Part Industry Compliance Documents

- IPC 1752A Class C
- IPC 1752A Class D
- Molex Product Compliance Declaration
- IEC-62474
- chemSHERPA (xml)

EU RoHS Certificate of Compliance

Part Details

General

Status	Active
Category	D-Sub Backshells
Series	173111
Description	FCT Plastic Backshell for D-Sub Connector, Black, Shell Size 2, Straight Cable Outlet, Large Inner Chamber, with #4-40 Locking Screws, Individually Packed
Magnetic	Yes
Product Family	FCT D-Sub Connectors
Product Name	FCT Products
Type	Plastic
UPC	889056325240

Electrical

Shield Type	None
Shielded	No

Physical

Cable Diameter	4.00-11.00mm
Color - Resin	Black
Material - Backshell	ABS / PC+ABS
Material - Screw	Steel
Mounting Style	Locking Screw
Orientation	Straight
Packaging Type	Bag
Plating - Backshell	None
Temperature Range - Operating	-35° to +120°C
Thread Size	4-40 UNC
Thread Type	Standard
Tightening Test Torque	40 Ncm
Waterproof / Dustproof	No

Use with Part(s)

Description	Part Number
Use With	FCT D-Sub, Size 2

This document was generated on Sep 19, 2024